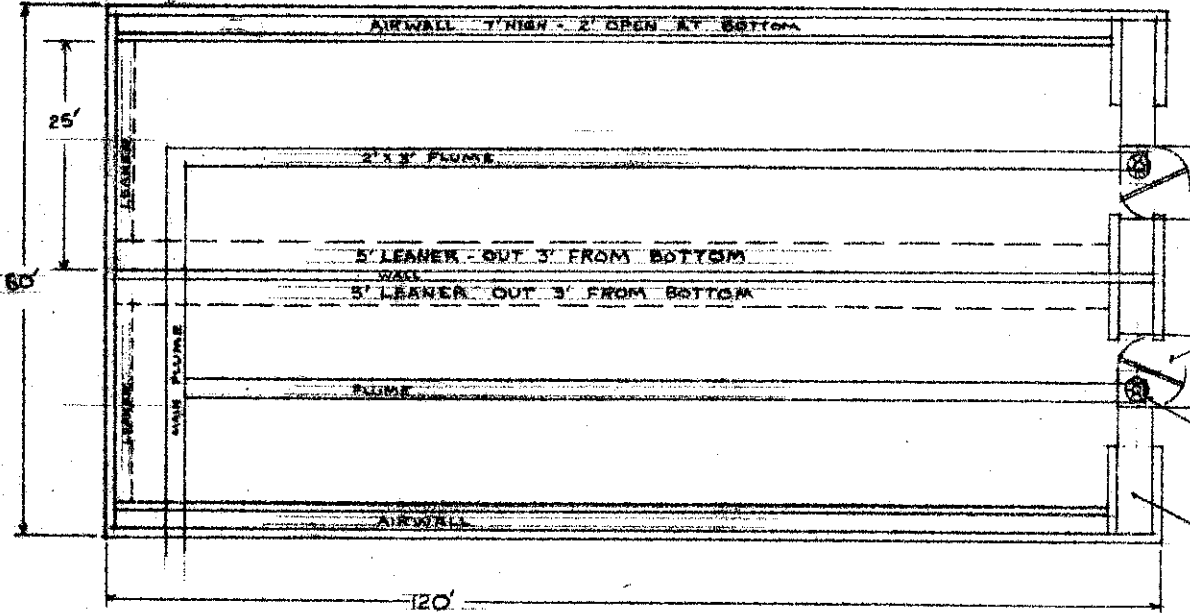


NOTE:

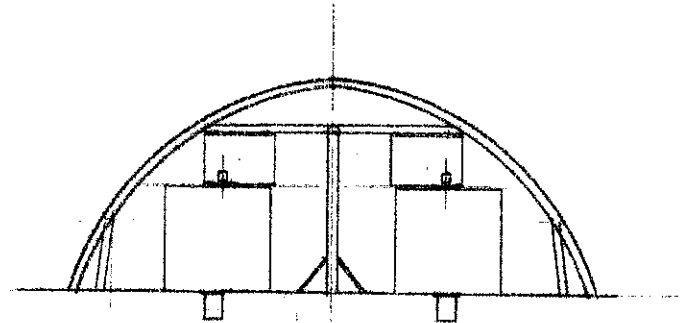
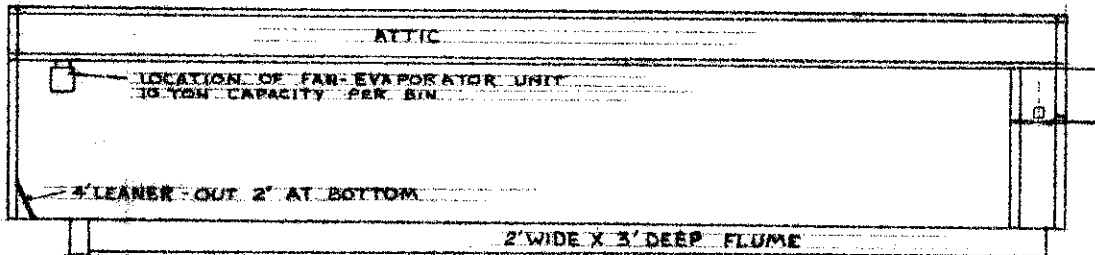
ON BACK WALL ABOVE LEANER AND ON SIDE WALLS ABOVE AIRWALL STRIP WALL WITH 1"x2" MATERIAL AND COVER WITH PLYWOOD SHEETING. ALLOW AIR TO PASS BEHIND THIS SHEETING AND EXHAUST AT CEILING LEVEL. THIS MOVING AIR IS REQUIRED TO PREVENT FREEZING.



INLET EXHAUST CONTROL WITH SINGLE DAMPER FOR CONTROL

FAN - 18000 CFM @ 2 1/2" STATIC PRESSURE
2 1/2" DIA. - 5 H.P.

4" WIDE PLENUM CHAMBER



60 FT WIDE POTATO STORAGE	
BOONE, GRANTON	7' 10" <small>NET CLEARANCE</small>
30,000 CWT COOL STORAGE	
DATE 1974	ORDER NO. ND-734-6-5