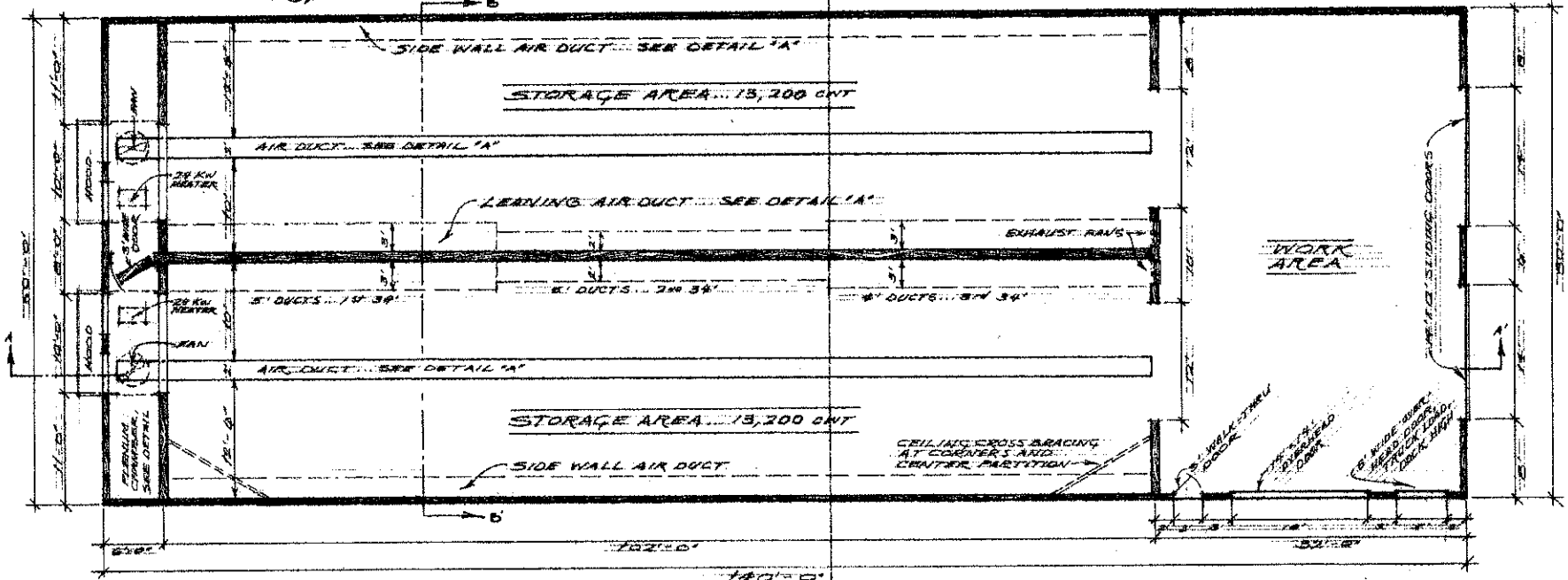
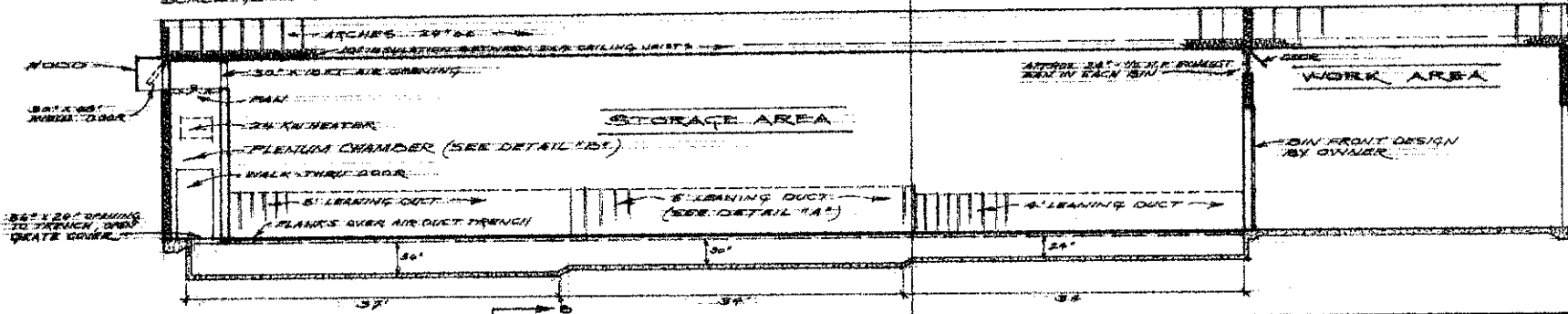


**SECTION A-A'**

SCALE: 1/8" = 1'-0"



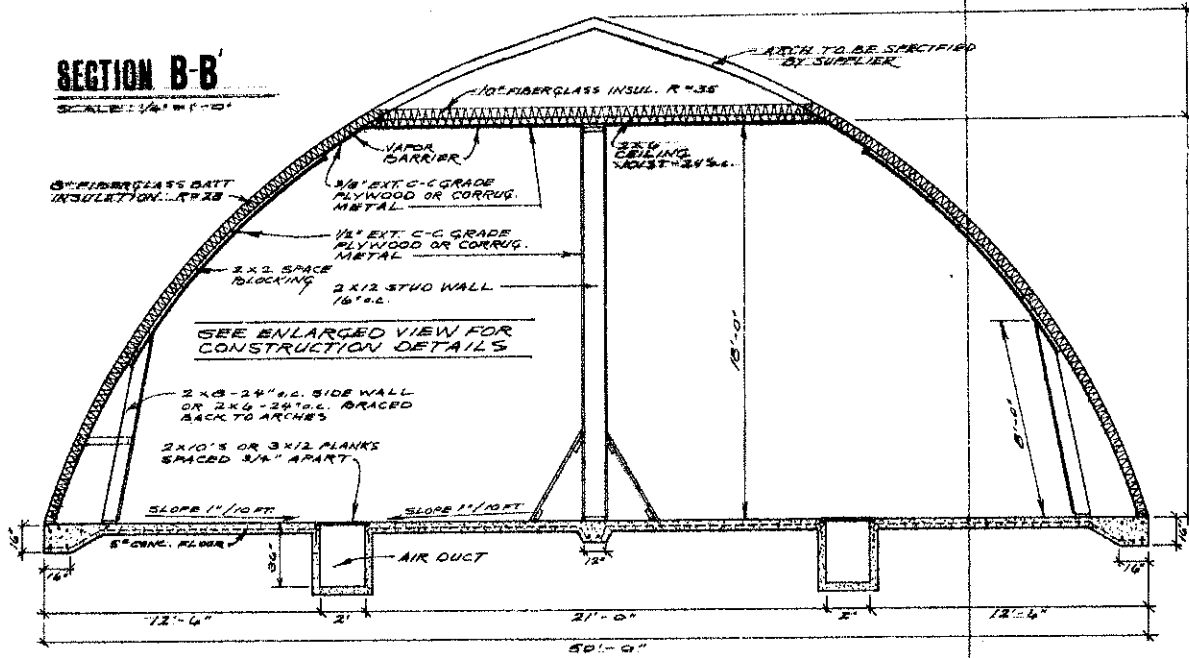
**FLOOR PLAN**

SCALE: 1/8" = 1'-0"

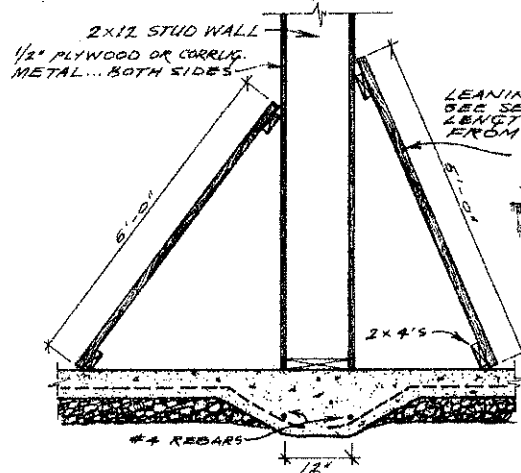
ARCHED ROOF FILLS STRENGTH	
N.D. 734-6-13	DATE: 6-1952
DESIGNED BY: D. L. LUNDQUIST	
DATE: 12-75	SCALE: 1/8" = 1'-0"

# SECTION B-B'

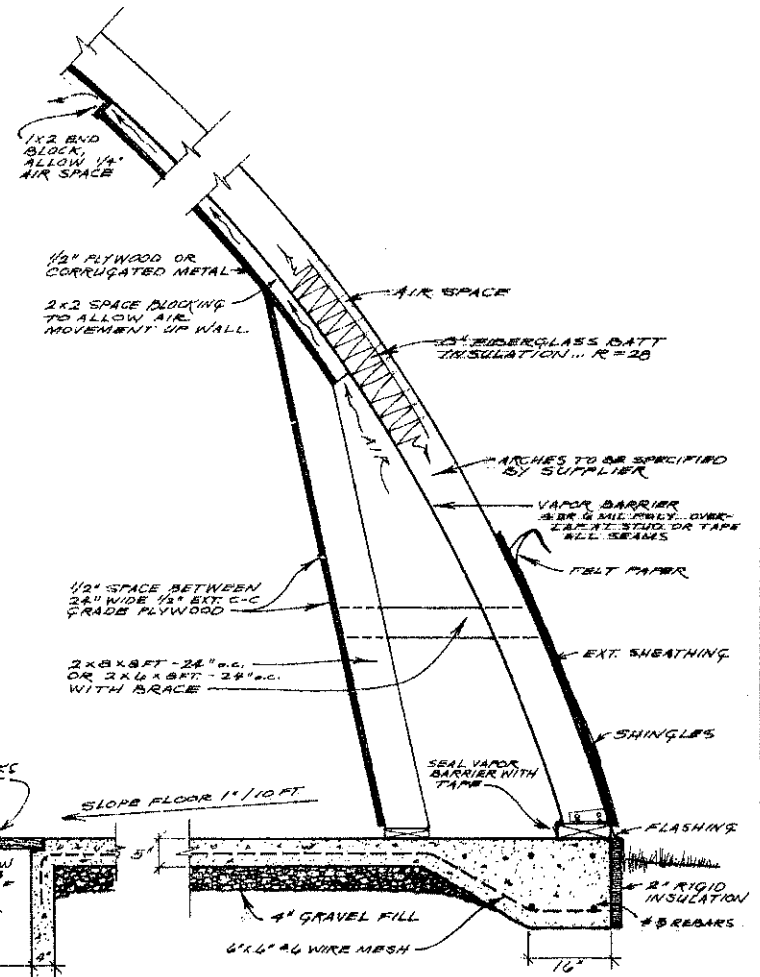
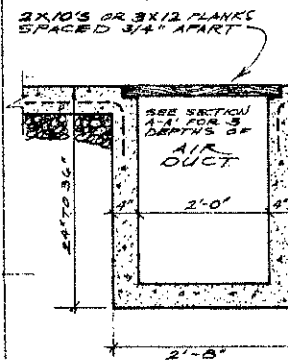
SCALE: 1/4" = 1'-0"



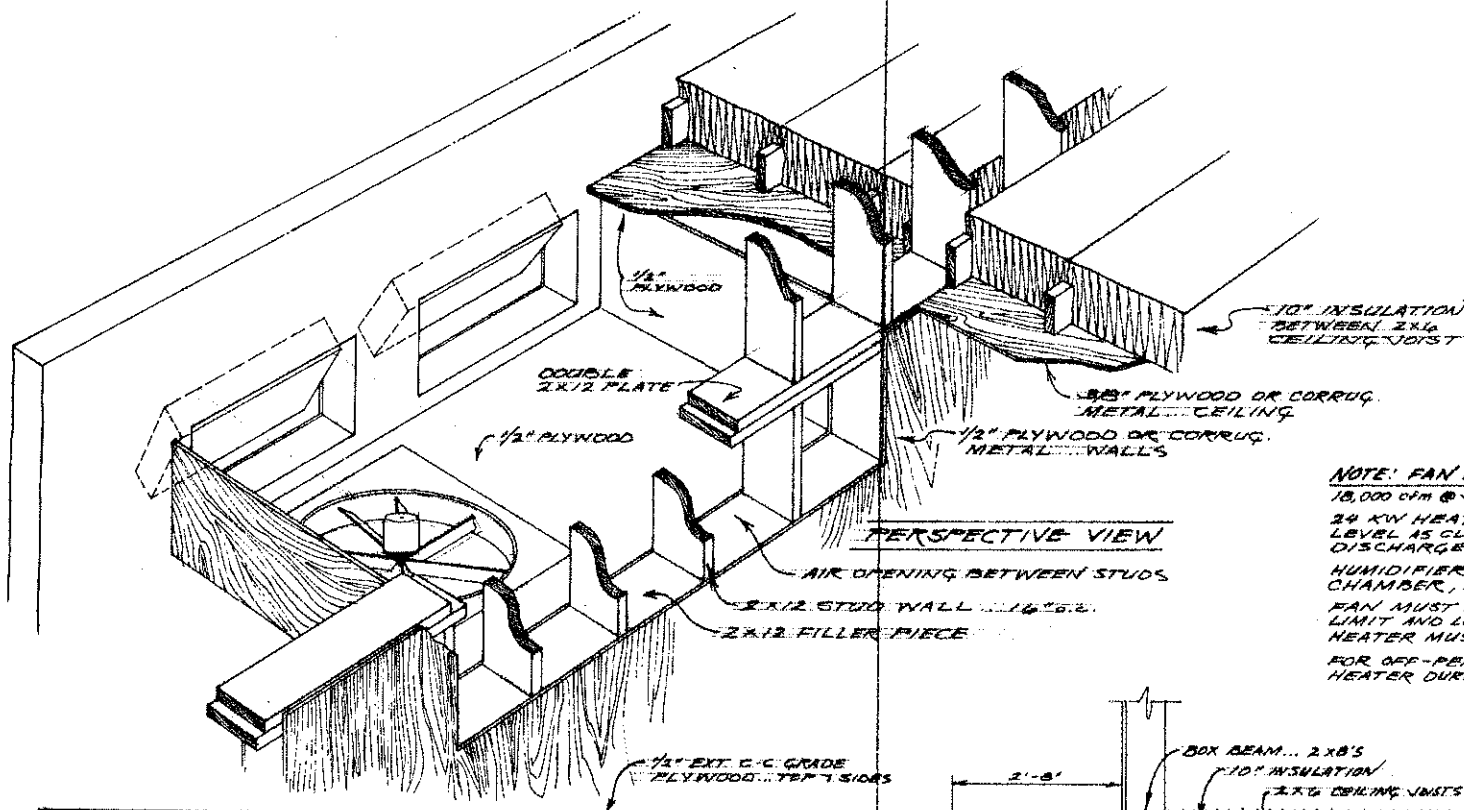
SEE ENLARGED VIEW FOR CONSTRUCTION DETAILS



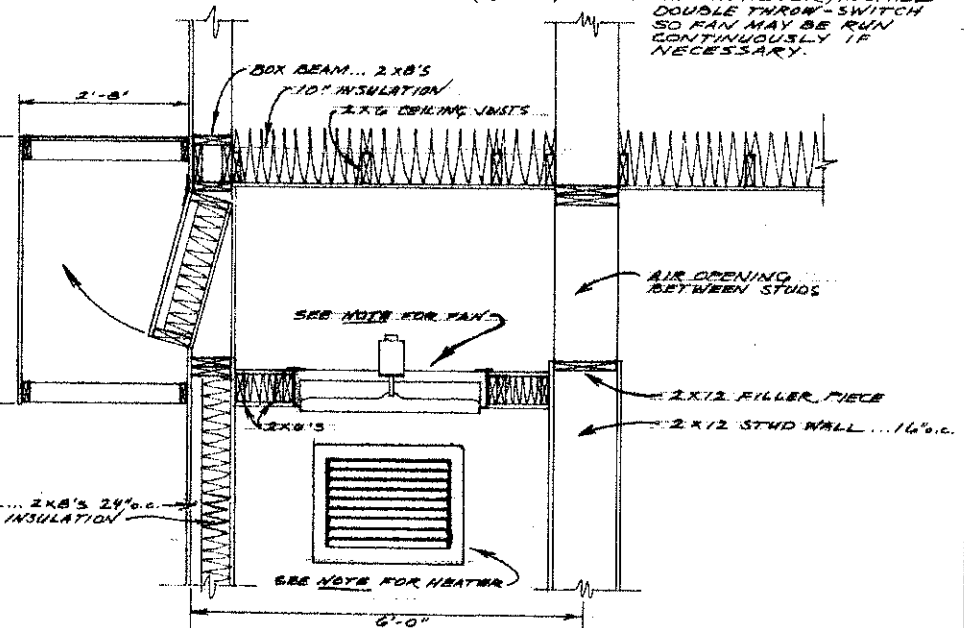
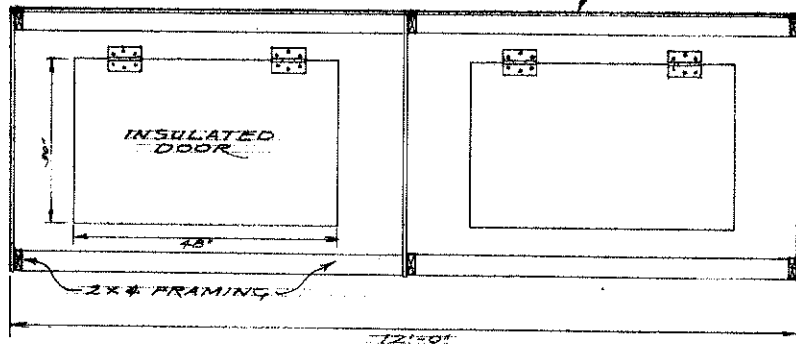
DETAIL A CONSTRUCTION DETAILS  
SCALE: 3/4" = 1'-0"



50' x 140' 26,000 cu ft. (WARM STORAGE) ARCHED ROOF POTATO STORAGE			
N.D. 734-6-13	SCALE	DRAWN BY: R. L. GIBSON	
		REVISED	
PREPARED BY: NDSU Extension Agr. Engr. Dept.			
DATE: FEB '75	APPROVED BY: D. Lundstrom	DRAWING NUMBER: SHT. 2 OF 3	



**NOTE: FAN AND HEATER SPEC'S...**  
 10,000 cfm @ 3/4" S.P. FAN, APPROX. 36" DIA., 5 H.P.  
 24 KW HEATER REQUIRED, MOUNT AT CEILING LEVEL AS CLOSE TO FAN AS POSSIBLE WITH HEAT DISCHARGE DIRECTLY INTO FAN BLAST.  
 HUMIDIFIER MAY BE INSTALLED IN PLENUM CHAMBER, 12 GAL/HR RECOMMENDED OUTPUT.  
 FAN MUST HAVE ON-OFF CONTROLLER, HIGH-LIMIT AND LOW-LIMIT THERMOSTATS. ELECTRIC HEATER MUST HAVE THERMOSTAT CONTROL.  
 FOR OFF-PEAK POWER... FAN SHUTS OFF WITH HEATER DURING OFF-TIME - HOWEVER, INSTALL DOUBLE THROW SWITCH SO FAN MAY BE RUN CONTINUOUSLY IF NECESSARY.



**DETAIL B** PLENUM CHAMBER, FAN, HEATER. CONSTRUCTION DETAILS  
 SCALE: 3/8" = 1'-0"

30' X 180' X 6'000' (WARM STORAGE) ARCHED ROOF POTATO STORAGE		
N.D. 73A-6-13	SCALE	DRAWN BY R. COSSETTE
PREPARED BY	DATE	REVIEW
NDSU Extension Agr. Engr. Dept.		
DATE Feb. 75	APPROVED BY D. Lundstrom	DRAWING NUMBER 1517