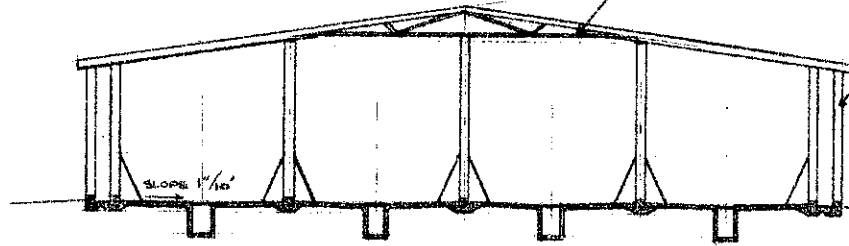


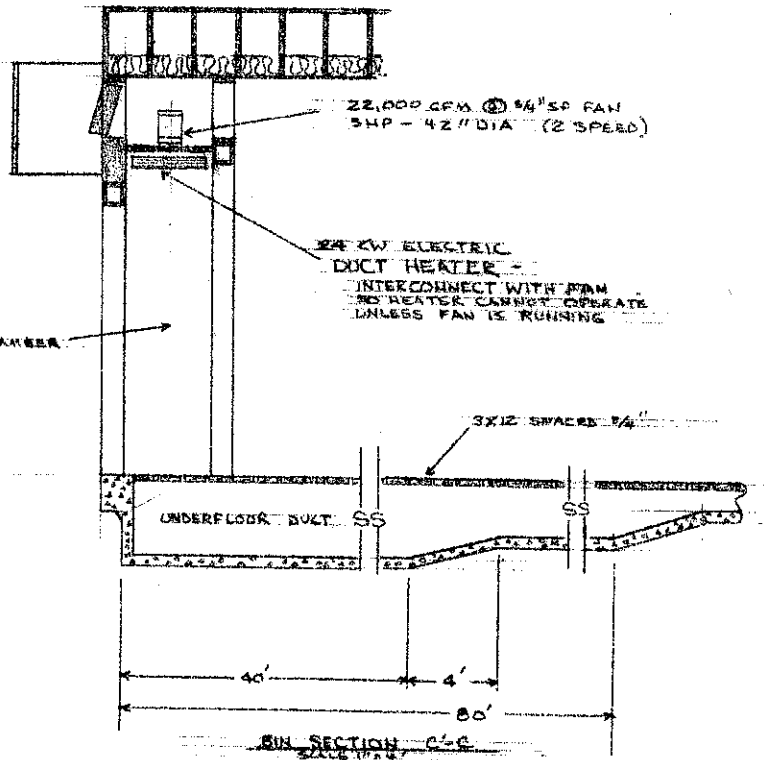
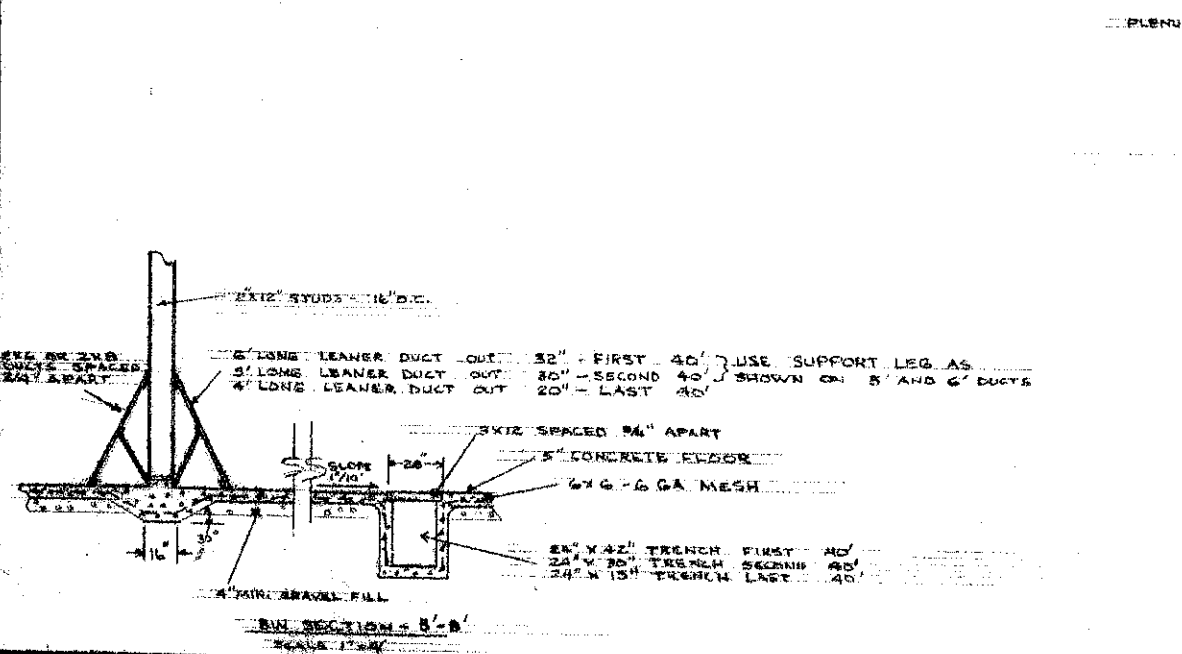
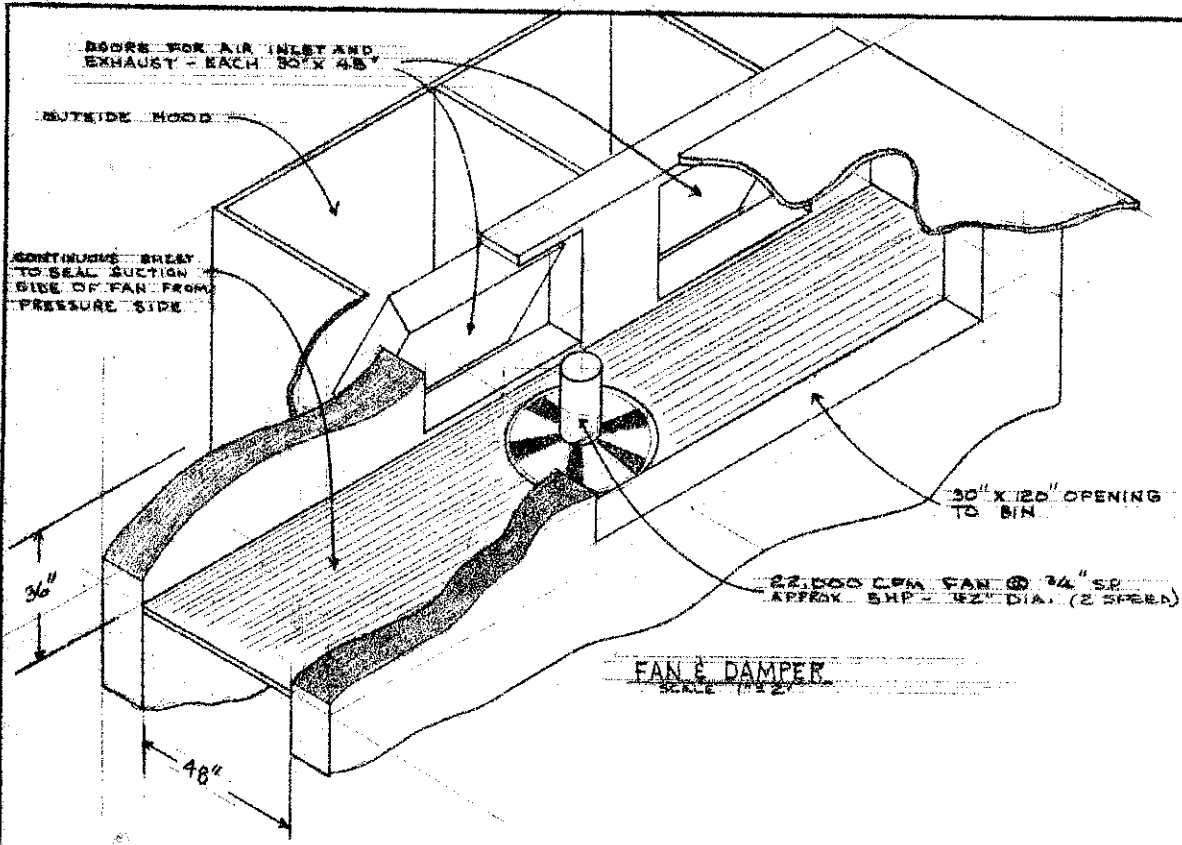
INSULATE CEILING WITH 10" FIBERGLASS BATT OR LOOSE FILL, R=35 OR EQUIVALENT PROVIDE 6 MIL POLYETHYLENE VAPOR BARRIER INSIDE OF INSULATION; ALL SEAMS TAPED OR ROLLED LEAVE 2" AIR SPACE OVER INSULATION (MINIMUM) FOR VENTILATION



INSULATE WALLS WITH 8" FIBERGLASS BATT OR EQUIVALENT, R=24 -- PROVIDE 6 MIL POLYETHYLENE VAPOR BARRIER INSIDE OF INSULATION; ALL SEAMS TAPED OR ROLLED

SECTION A-A

62,000 CWT POTATO STORAGE ADDITION			
DICK MOEN REYNOLDS, N.D.	SCALE 1"=10'	DATE 4-4-77	DRAWN BY D.L. LUNDSTROM REVISED
NDSU EXTENSION AGRIC. ENGINEERING			
DATE 4-4-77	APPROVED BY N.D. 734-6-10	DATE 4-4-77	DRAWING NUMBER SH. 1 of 2



62,000 CWT POTATO STORAGE			
DICK MOEN REYNOLDS, N.D.		SCALE AS SHOWN	DESIGNED BY DR. LUNDSTROM REVISED
NDSU EXTENSION AGRIC. ENGINEERING			
DATE 4-5-74	APPROVED BY N.D. T34-6-10	SHADING NUMBER	SH. 2 of 2