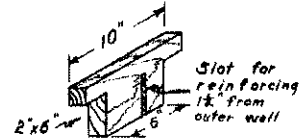
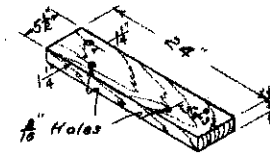


OUTSIDE GALVANIZED IRON FORM

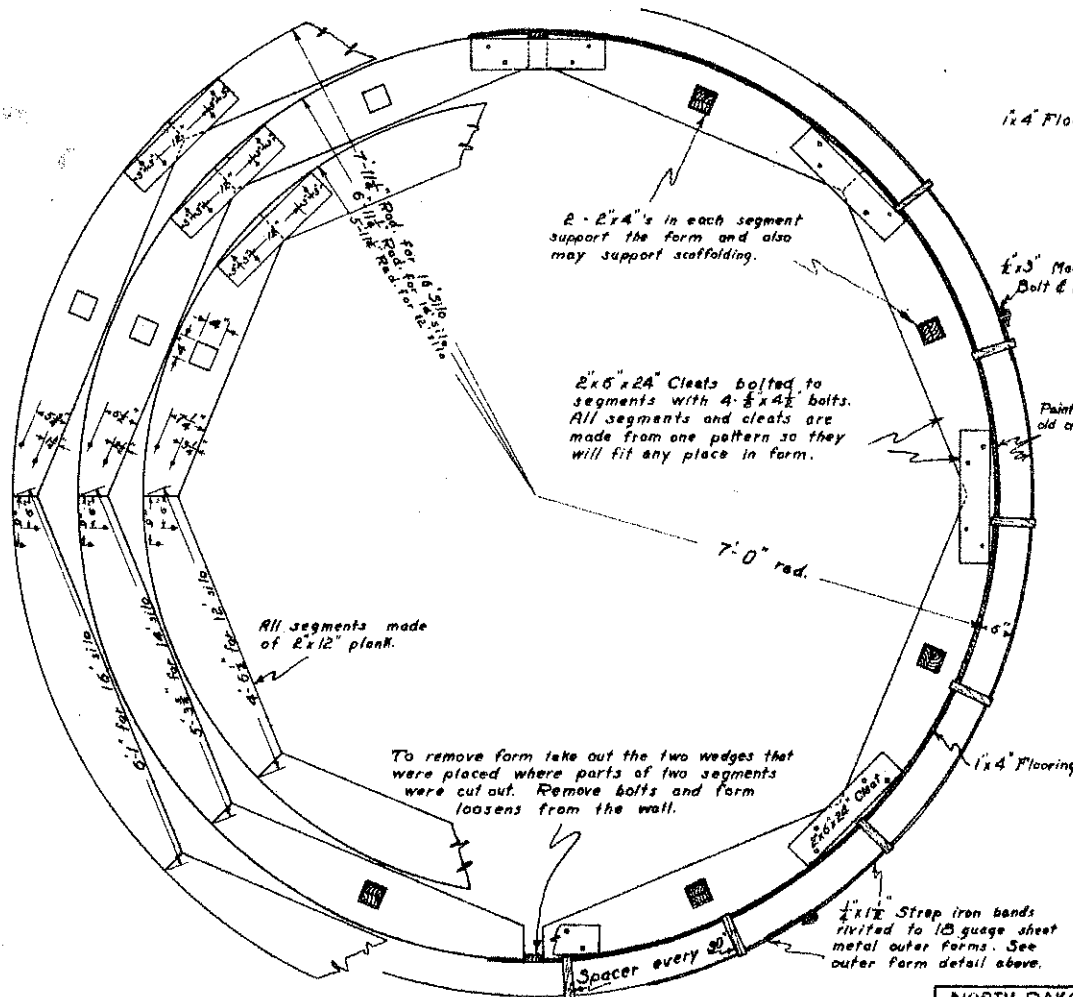
SECTION THRU FORM



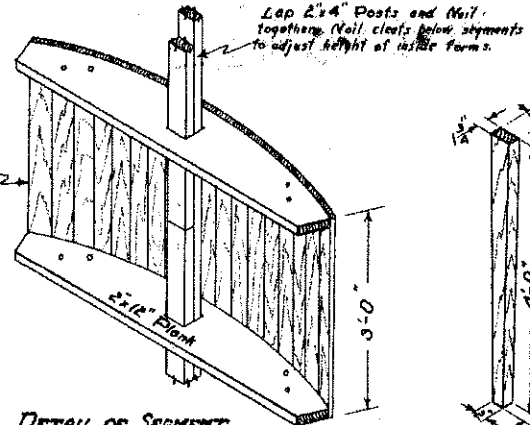
FORM SPACER  
17 Required for 14' silo.



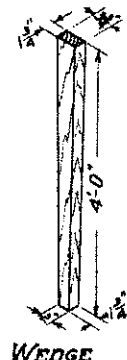
DETAIL OF CLEAT



PLAN VIEW OF FORM Scale: 3/4" = 1'-0"



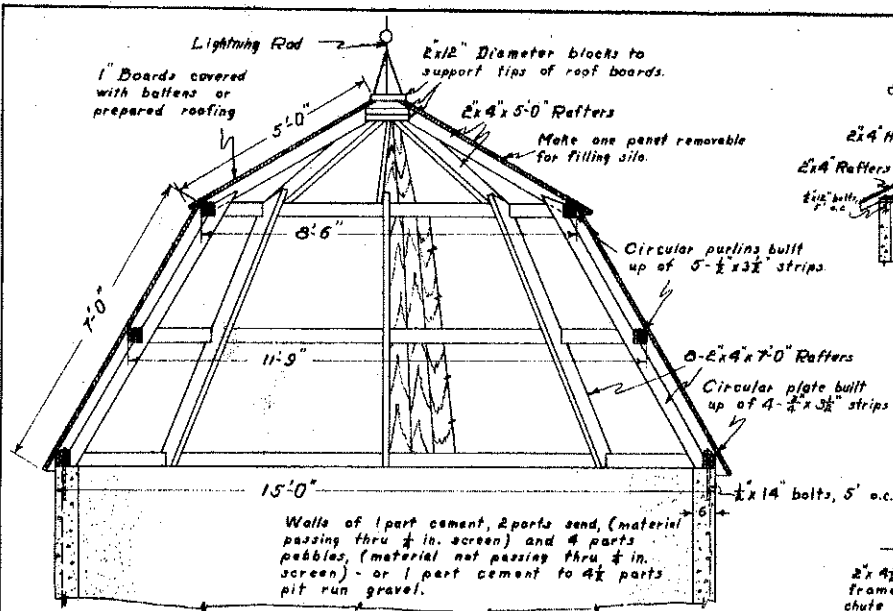
DETAIL OF SEGMENT WITH POST



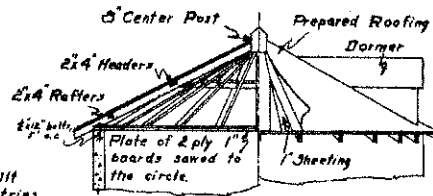
WEDGE

MATERIALS		
INSIDE FORMS FOR 14'-0" DIAMETER SILO		
NO.	SIZE	DESCRIPTION
8	2x12x16	For 16 - 2x12x5-3/4" Segments
2	2x6x16	For 16 - 2x6x24" Cleats
44	1x4x12	Flooring for form lining
32	2x4x16	Form supports for 36" silo - Uprights
1	2x4x8	For two wedges
8	2x4x10	} Braces & Scaffolding
20	2x4x8	
1	2x6x16	For 16 - 2x6x10" Spacers
64	1/2x4x2	Bolts with Nuts and two washers
10	10" O d	Nails
1	gal.	Paint
		Crankcase oil to coat face of forms.
OUTSIDE FORMS		
5	3x10"	Sections 18 gauge gal. sheet metal with total length, after lapping, of 47'-1/2"
20	1/2x1x10"	Strap iron for form ties.
20	1/2x3"	Machine bolts
200	1/2x3/4"	} Rivets
40	1/2x1/2"	
15	1/2x1"	

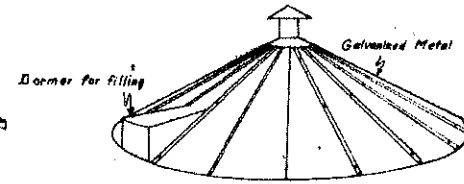
INSIDE FORMS MAY BE USED FOR CONSTRUCTING A PIT SILO



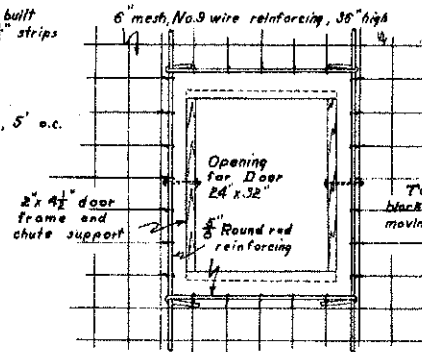
GAMBREL ROOF FRAMING



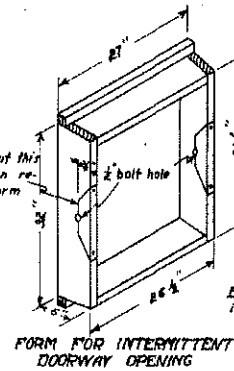
CONICAL FRAME ROOF



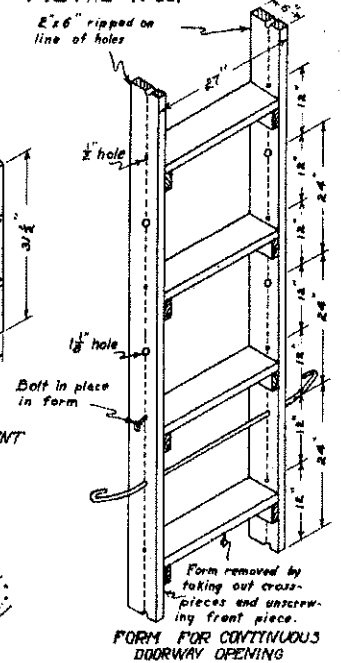
COMMERCIAL METAL ROOF



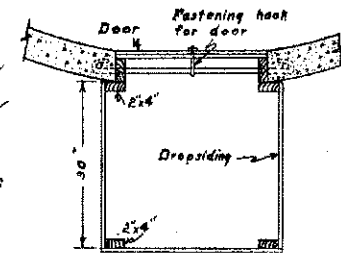
ARRANGEMENT OF REINFORCEMENT AROUND INTERMITTENT DOORWAY OPENING



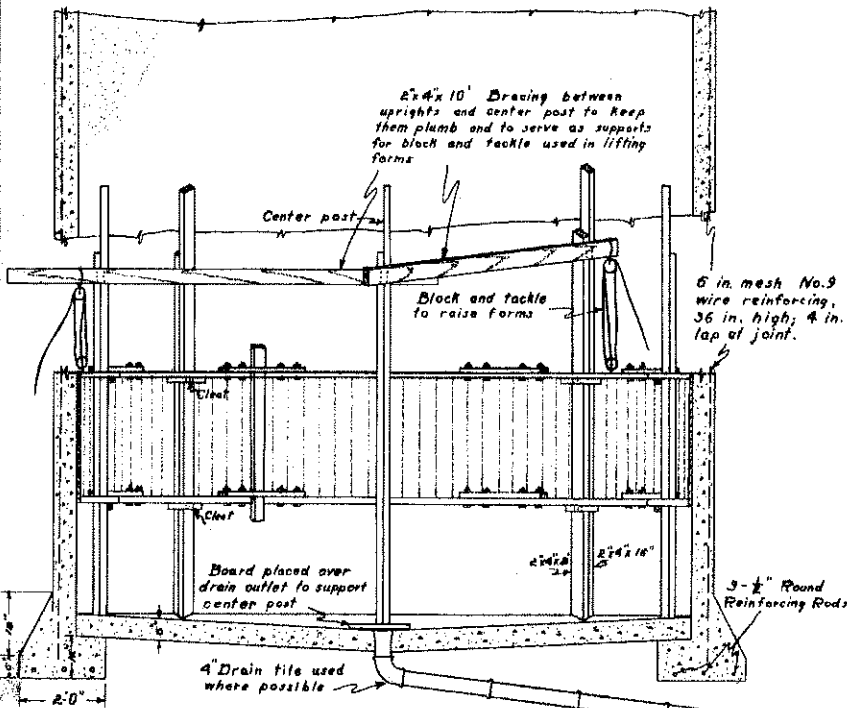
FORM FOR INTERMITTENT DOORWAY OPENING



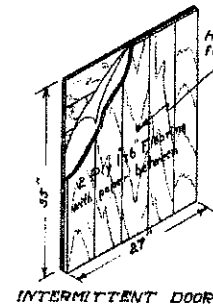
FORM FOR CONTINUOUS DOORWAY OPENING



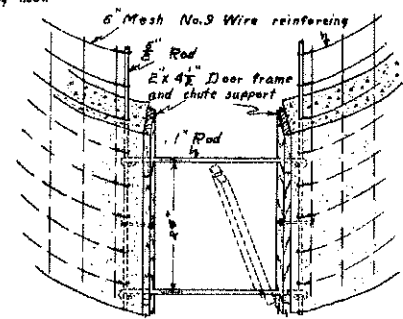
PLAN OF CHUTE



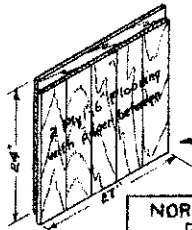
SECTION OF 14' DIAMETER SILO



INTERMITTENT DOOR



ARRANGEMENT OF REINFORCEMENT AROUND CONTINUOUS DOORWAY OPENING



CONTINUOUS DOOR

NORTH DAKOTA AGRICULTURAL COLLEGE  
DIVISION OF AGRICULTURAL EXTENSION  
STATE COLLEGE STATION, FARGO, NORTH DAKOTA  
H.L. WALSTER - DIRECTOR  
U. S. DEPARTMENT OF AGRICULTURE COOPERATING  
ACTS OF CONGRESS MAY 8 JUNE 20 1914

MONOLITHIC CONCRETE SILO FORMS  
SCALE: Varies PLAN NO. ND733-1-52 DATE July, 1920  
DEPARTMENT OF AGRICULTURAL ENGINEERING  
DESIGNED BY Dept. of Agr'l. Engr. AGRI. EXPERIMENT STATION  
APPROVED BY H.P. McCally  
DRAWN BY C.P. Kelly  
TRACES BY C.P.K.