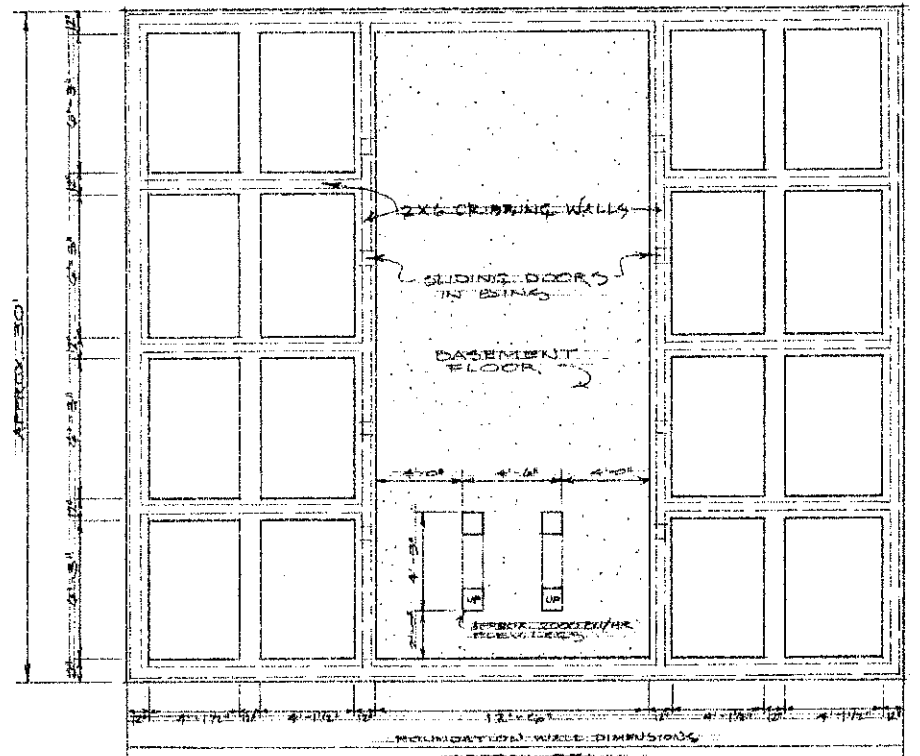
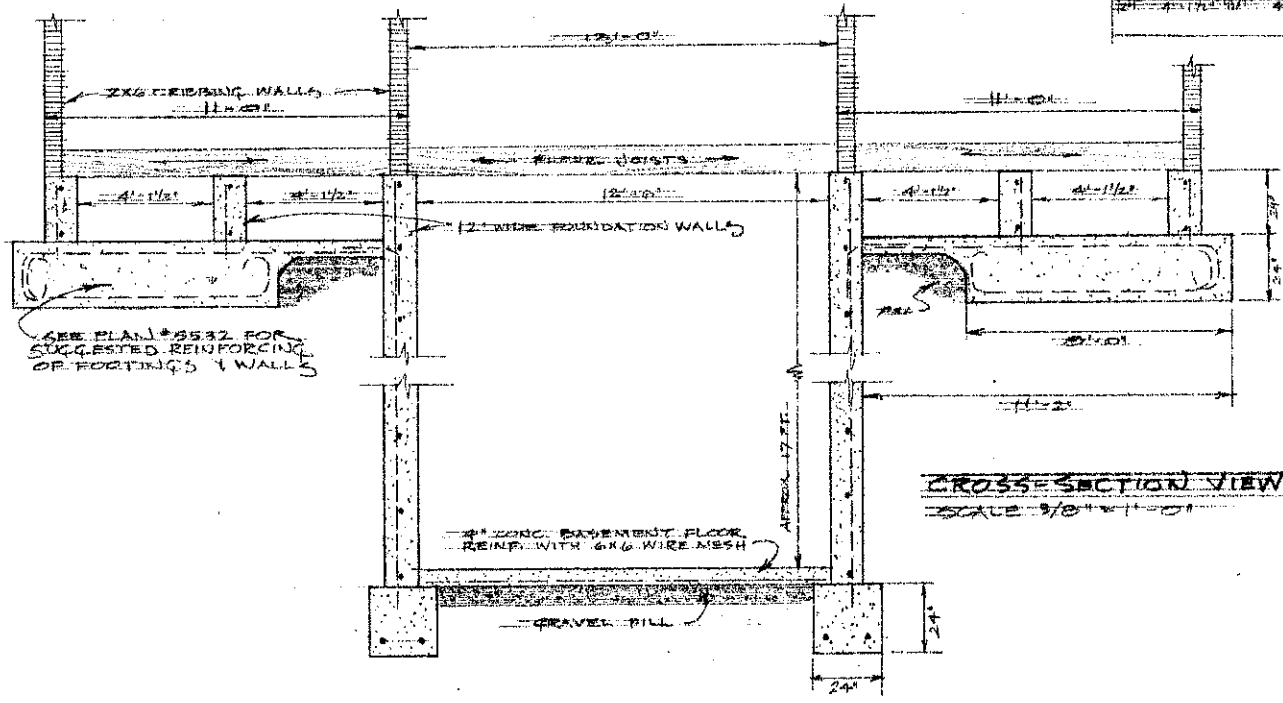


GRAIN HANDLING & ELEVATOR PLAN			
PREPARED FOR: TED VAN RY, PHD, NDSU	SCALE: 1/8" = 1'	DRAWN BY: R. B. S. / 10/15/14	
PREPARED BY: NDSU EXTENSION AGR. ENGR. DEPARTMENT	DATE: 10/15/14	APPROVED BY: N.D. 752-A-1	REVISION: REVISED
DRAWING NUMBER: SHT. 1 of 2		DATE: 10/15/14	



FOUNDATION WALL PLAN

SCALE 1/4" = 1'-0"



CROSS-SECTION VIEW

SCALE 3/8" = 1'-0"

ELEVATOR PLAN & DETAILS			
PREPARED FOR	SCALE	DRAWN BY <i>E. CONNOR</i>	
TED VAN RAY, PAIGREE, N.D.		REVISED	DW
PREPARED BY	N.D.S.U. EXTENSION APP. ENG. DEPT.		
DATE	APPROVED BY	DRAWING NUMBER	
10/15/76	N.D. 732-4-1	521	