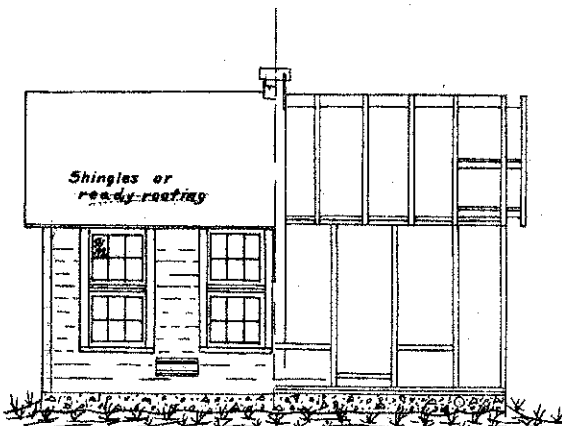
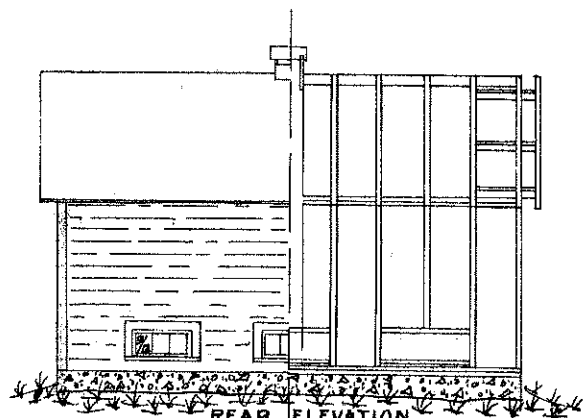


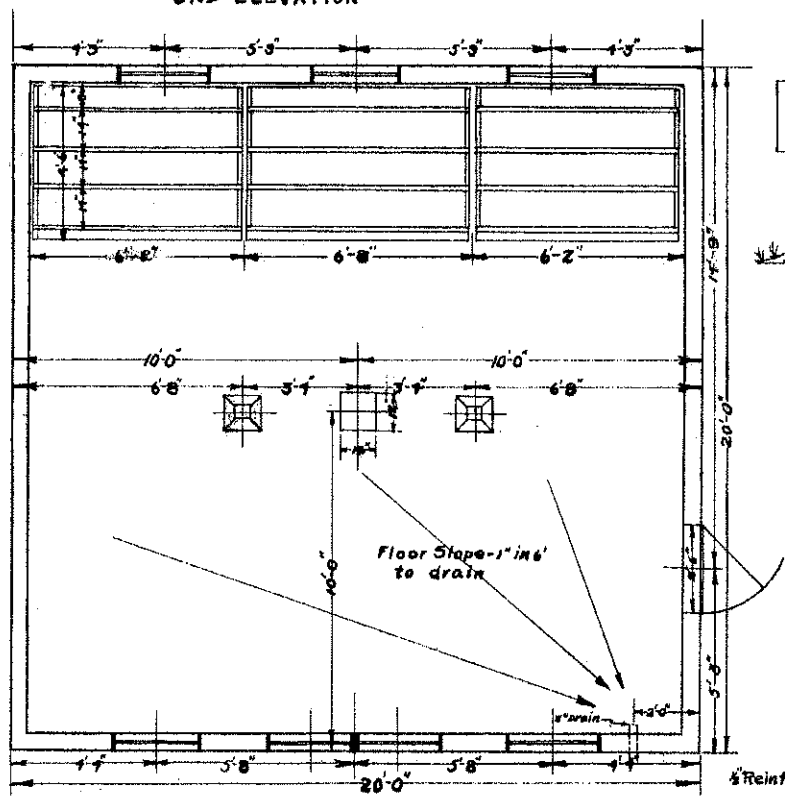
END ELEVATION



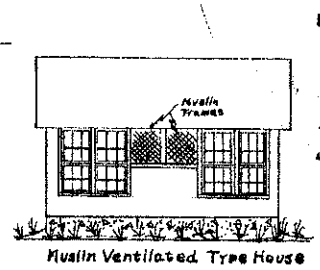
FRONT ELEVATION



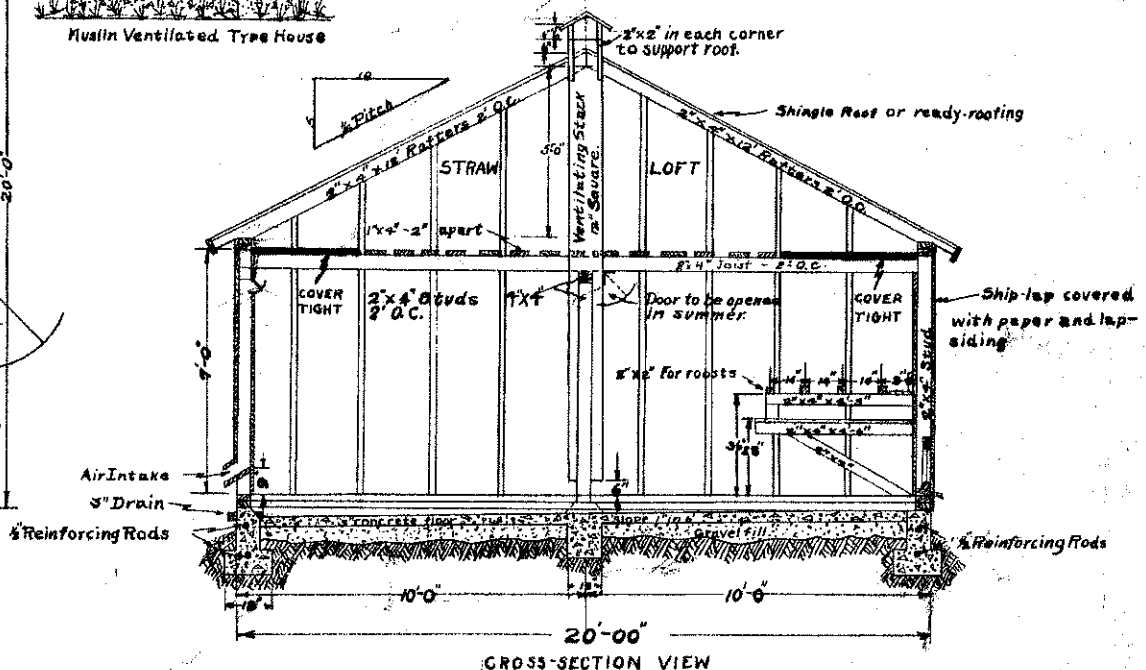
REAR ELEVATION



PLAN VIEW



Note: Ventilation system can be built using stack as shown in large drawing or muslin frames can be used as shown in small drawing at left. The muslin frames are the size of full window. This makes it possible to place a window sash in place of muslin frames in cold weather. No stack is used in this system of ventilation.



CROSS-SECTION VIEW

North Dakota Agricultural College, Fargo, N. Dakota.  
 Extension Service - Director  
 Cooperative Agricultural Extension Service  
 Acts of Congress, March - June 1914

**POULTRY HOUSE**  
 100 HEN CAPACITY  
 Plan No. 1017

Designed By: Dept. of Poultry Husbandry - O. A. Barton  
 Dept. of Agri. Engineering - R. M. Berlin  
 Drawn By: R. M. Berlin, Oct. 13, 1922 - Scale 1/4" = 1'-0"