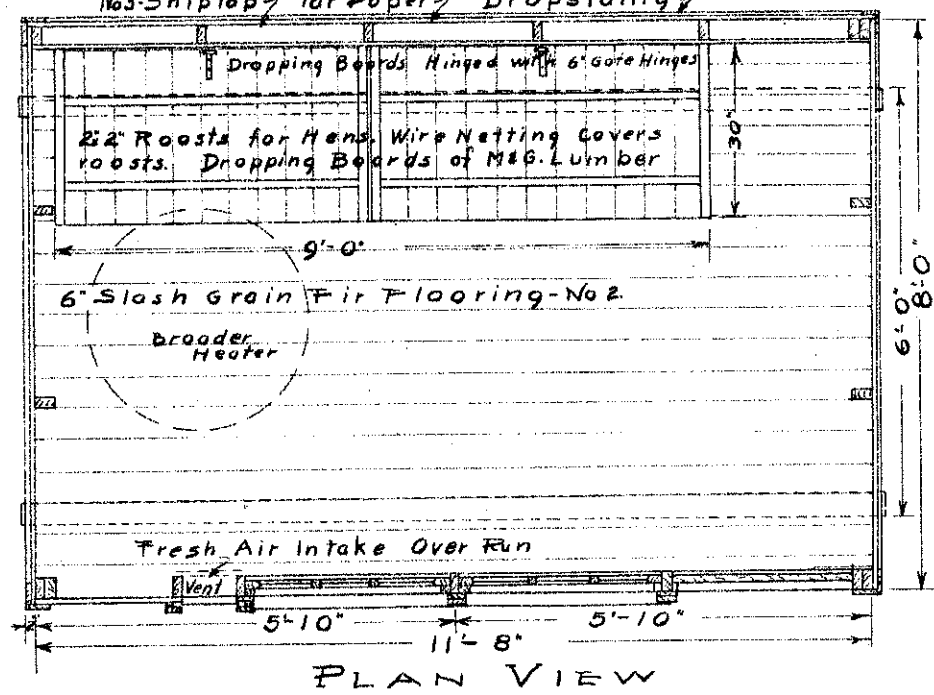
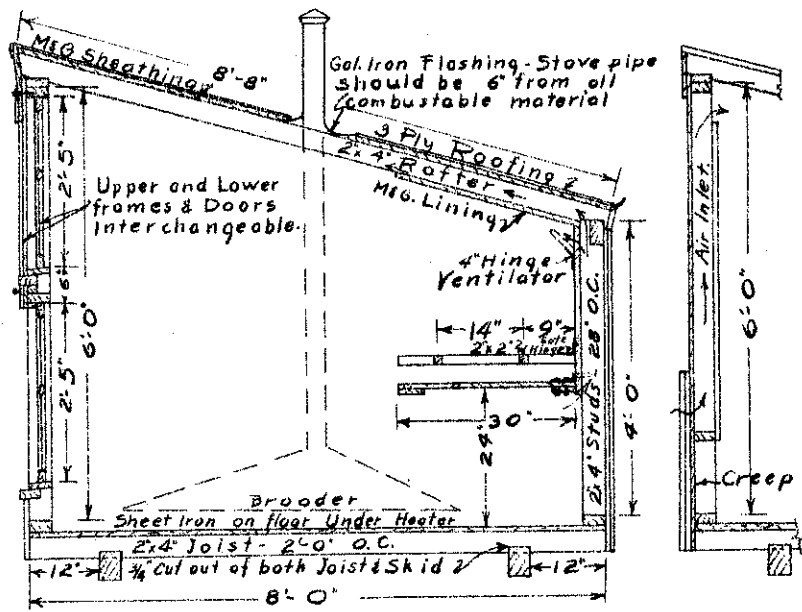


MATERIALS	
2	4x6x12 Skids
7	2x4x8 Joist
3	2x4x16 Puffs
16	2x4x12 Trim
8	2x2x12 F Rafters
27	1x6x12 Floor
35	1x6x12 Dropsiding
31	1/2 6x12 McG
8	1x8x12 Shiplap
17	1x8x16 "
2	1x10x12 Trim
6	1x4x12 Trim
10	1x6x12 "18
3	1x2x12 "
100	5x3x3ply Roof
100	4x4 Tar Paper
3"	6d Nails Com
50	10d "
20"	2 6d Nails Box
5"	6d Nails
3pr.	6' Gate Hinges
12	extra Hinge Bolts
1pr.	8" T Hinge
3pr.	4 Strap Hinge
1gal.	Paint
8	Window handles
25	cut-6Lr-1 1/2"



PORTABLE POULTRY HOUSE - 250 CHICKS OR 25 HENS

NORTH DAKOTA AGRICULTURAL COLLEGE U.S. DEPARTMENT OF AGRICULTURE COOPERATING EXTENSION DIVISION H. L. WALSTER - DIRECTOR ACTS OF CONGRESS MAY 8 - JUNE 30, 1914	PLAN NUMBER ND 787-24	NORTH DAKOTA AGRICULTURAL COLLEGE DEPARTMENT OF AGRICULTURAL ENGINEERING APPROVED BY DEPT. OF POULTRY HUSBANDRY - DESIGNED BY R.C.M. TRACED BY C.F.K. SCALE 1/4" = 1'-0" DATE - MAY 1925
	NORTH DAKOTA AGRICULTURAL COLLEGE DEPARTMENT OF AGRICULTURAL ENGINEERING APPROVED BY DEPT. OF POULTRY HUSBANDRY - DESIGNED BY R.C.M. TRACED BY C.F.K. SCALE 1/4" = 1'-0" DATE - MAY 1925	