

NOTE: RIGID FRAME SHOULD HAVE GUSSETS ON INTERIOR SIDE ONLY AT FRONT & BACK ENDS.

NOTE: NAILING PATTERN AT CORNERS.

SHEATHING PATTERN FRONT

12'-0"

4'-0"

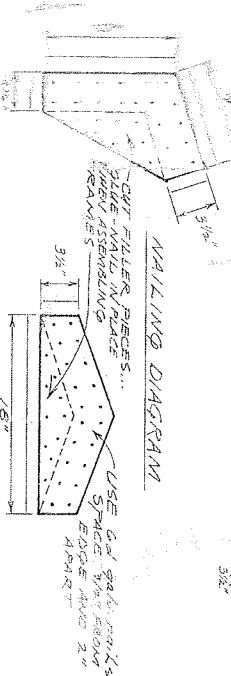
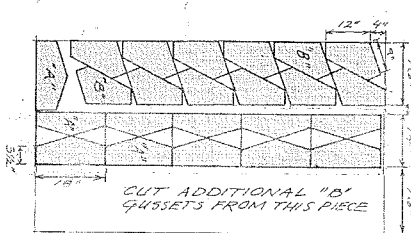
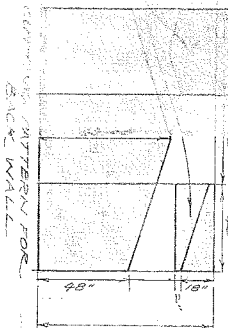
JOINT

JOINT

REINFORCING BARS AT 2'-0" O.C.

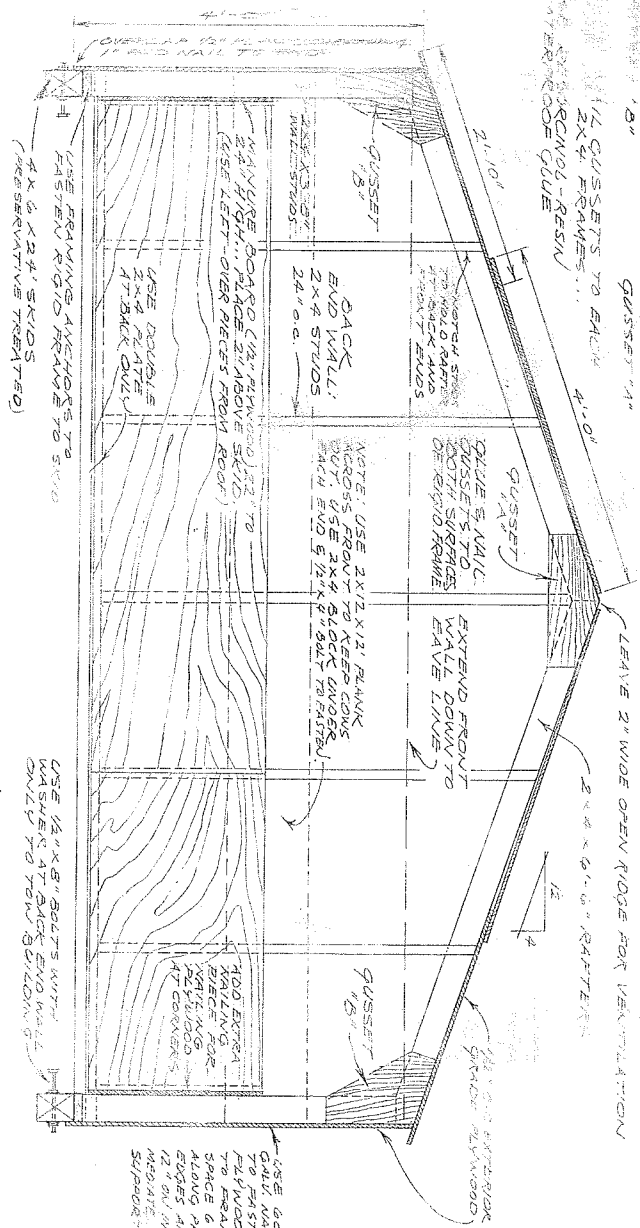
FRONT

FLOOR PLAN VIEW
SCALE: 1/8" = 1'-0"



CUT ADDITIONAL 'B' GUSSETS FROM THIS PIECE

LIST OF MATERIALS	
AMT	TYPE AND LOCATION
2	4 X 6 X 24 FT SKIDS (TREATED)
26	2 X 4 X 3'-8" SIDE WALL STUDS
5	2 X 4 X 12' FRONT & REAR WALL FRAMING
2	4 X 8 X 12' C-C EXT. PLWOOD... ROOF & WALLS
26	FRAMING ANCHORS
2	1/2" X 8" BOLTS & 1/2" X 4" BOLTS NAILS AND GLUE
1	2 X 12 X 12' BARRIER BOARD ACROSS FRONT



CROSS SECTION VIEW

PORTABLE RANGE-CALF SHELTER

NO. PLAN 724-1-6

PREPARED BY

DESIGNED BY

APPROVED BY

DATE

DRAWING NUMBER

SCALE

1 1 / 1