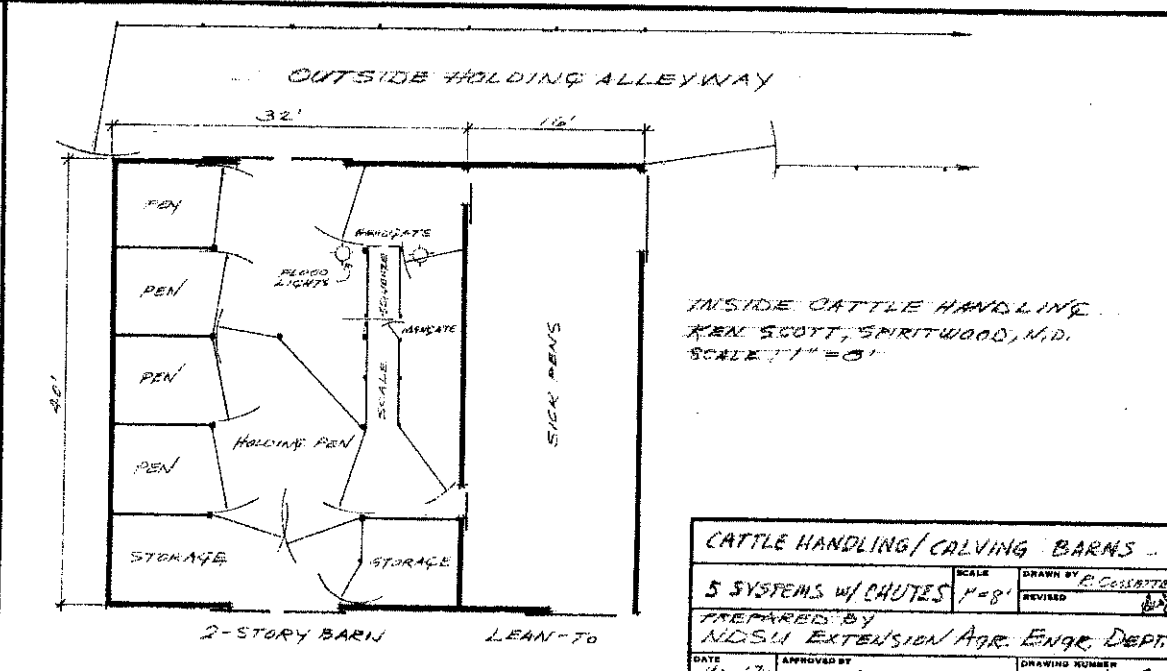
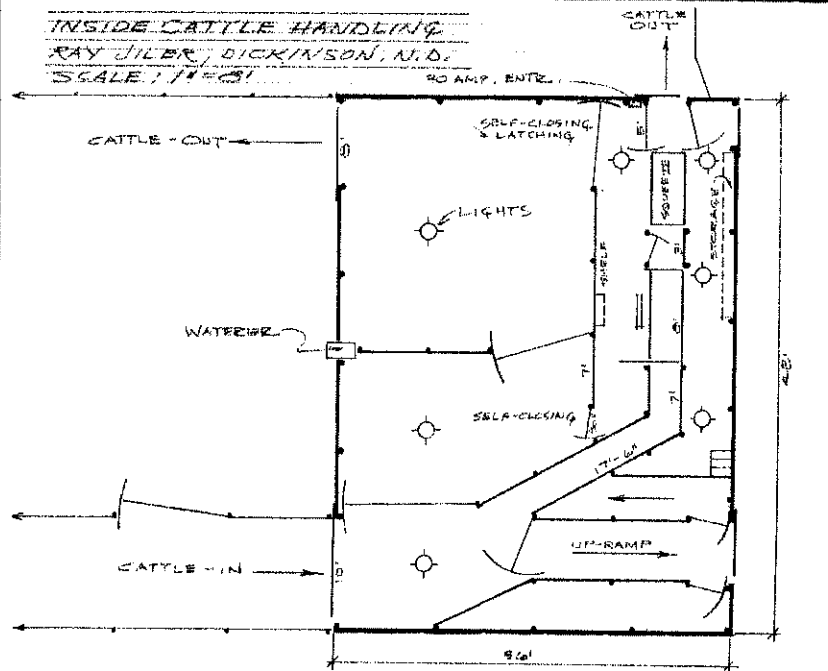
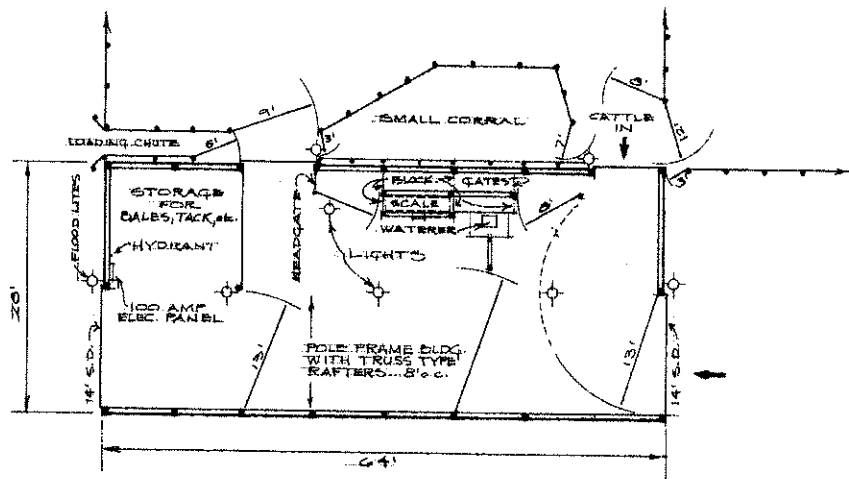


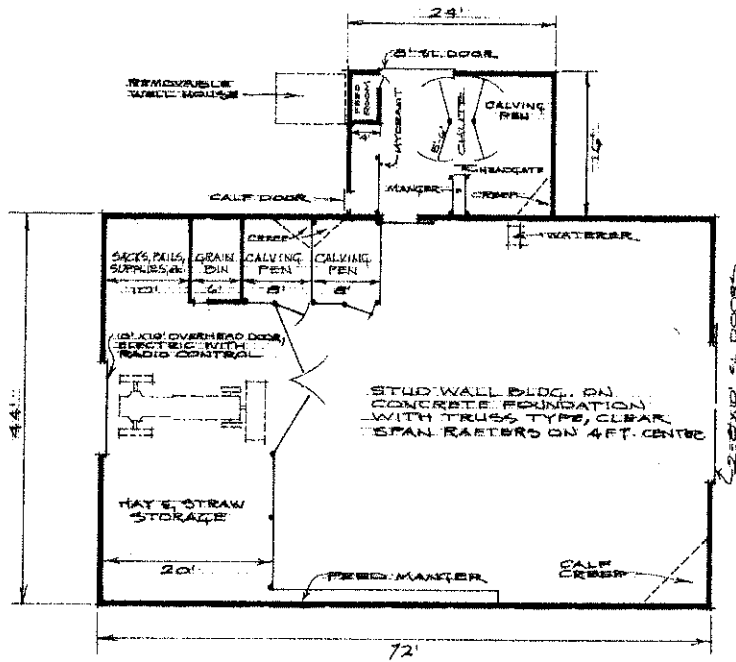
CATTLE WORKING-TREATING BUILDING  
 FLOYD DRYAN  
 HI-VIEW ANGUS FARM, BOWBILLS  
 8.25.74 - JUL. 2, 1979



CATTLE HANDLING/CALVING BARN			
5 SYSTEMS w/ CHUTES	SCALE 1" = 8'	DRAWN BY P. COLLETTE	REVISED
PREPARED BY NDSU EXTENSION/AGR. ENGR. DEPT.			
DATE 8/14/74	APPROVED BY N.D. 724-1-14	DRAWING NUMBER	SHT. 1 of 2



**CATTLE WORKING BARN**  
 PAUL HAROLDSON, COLEAU, N.D.  
 SCALE: 1/4" = 10 FT.



**CALVING BARN**  
 ROBERT WEIZ, HURDSFIELD, N.D.  
 SCALE: 1/8" = 10 FT.

CATTLE HANDLING/CALVING BARN'S			
5 SYSTEMS W/ CHUTES	SCALE 1/8" = 10'	DRAWN BY R. Cassatt	REVISED
PREPARED BY INDIA EXTENSION AGR. ENGR. DEPT.			
DATE Dec. '74	APPROVED BY N.D. 724-1-1A	DRAWING NUMBER SHT. 2 of 2	