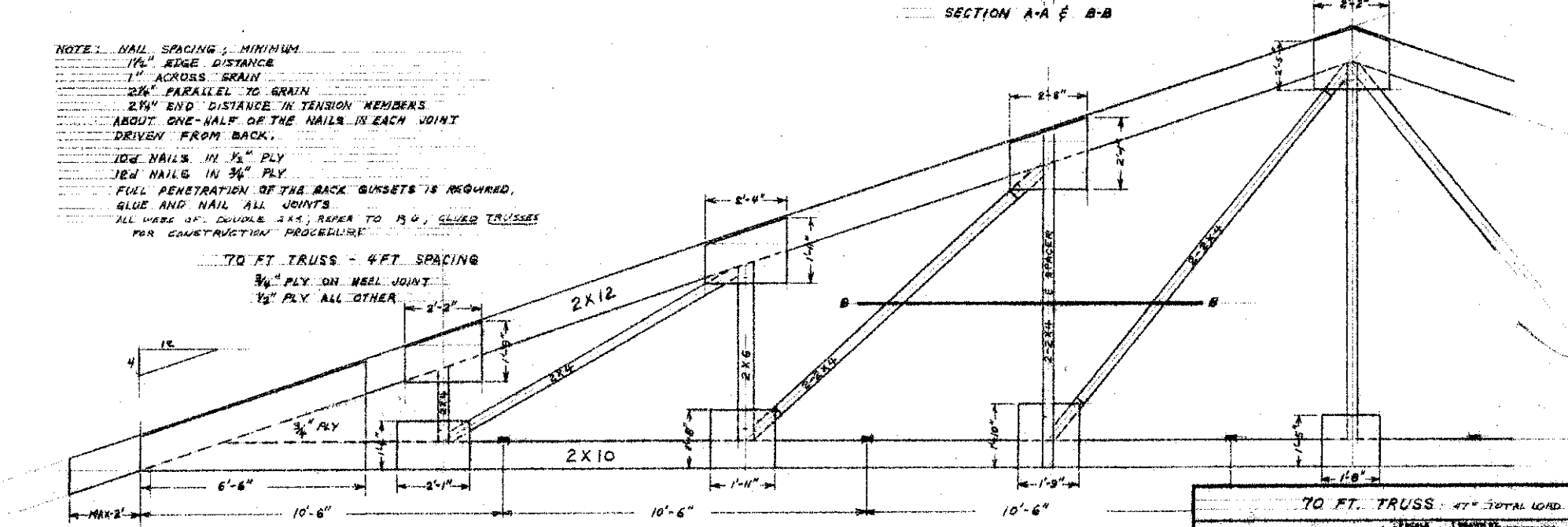


70 FT TRUSS - 2 FT SPACING  
ALL 1/2" PLY

SECTION A-A & B-B

NOTE: NAIL SPACING - MINIMUM  
 1 1/2" EDGE DISTANCE  
 1" ACROSS GRAIN  
 2 1/4" PARALLEL TO GRAIN  
 2 1/4" END DISTANCE IN TENSION MEMBERS  
 ABOUT ONE-HALF OF THE NAILS IN EACH JOINT  
 DRIVEN FROM BACK.  
 10D NAILS IN 1/2" PLY  
 10D NAILS IN 3/4" PLY  
 FULL PENETRATION OF THE BACK GUSSETS IS REQUIRED,  
 GLUE AND NAIL ALL JOINTS  
 ALL WARE OF DOUBLE 2xS, REFER TO 154, GLUED TRUSSES  
 FOR CONSTRUCTION PROCEDURE



70 FT TRUSS - 4 FT SPACING  
 3/4" PLY ON HEEL JOINT  
 1/2" PLY ALL OTHER

|                                |                 |             |
|--------------------------------|-----------------|-------------|
| 70 FT. TRUSS - 4 FT TOTAL LOAD |                 |             |
| AG. ENG. DEPT. NCSU            | SCALE 1/8" = 1' | DESIGNED BY |
|                                |                 | 10/1        |
| DATE                           | APPROVED BY     | DESIGNED BY |
| NOV 2, 63                      | N.D. 708-1-4    | 10/1        |