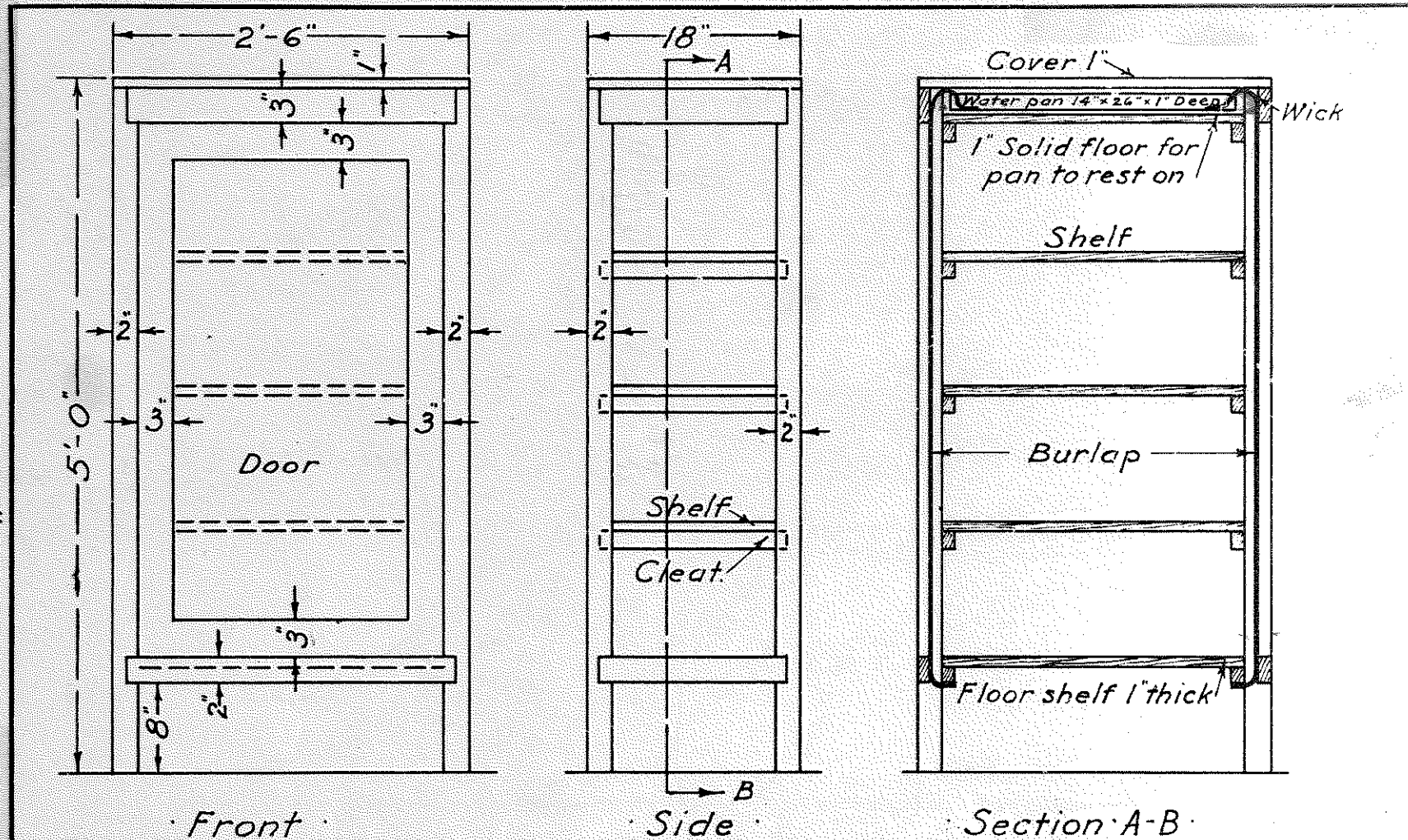


41.



Note:-

This refrigerator is designed for use in locations where climatic conditions render high evaporation possible during portions of the year.

It is not recommended as a substitute for an ice refrigerator where ice is available, but for locations where it is impossible or difficult to procure ice.

U.S. Department of Agriculture	
Office of	
PUBLIC ROADS - RURAL ENGINEERING	
L. W. Page - Director	
Division of	
RURAL ENGINEERING	
ICELESS	
REFRIGERATOR	
Scale: 1" = 1'-0"	CHECKED
DESIGNED BY	SHEET ① OF ① SHEETS
DRAWN BY DANIELS	BY Z. B.
CHECKED BY A. H. FORD	NO. 20
APPROVED	SUBJECT NO. SERIAL NO.
E. B. M.	
642	

