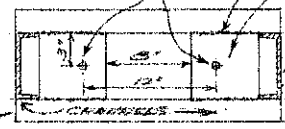


TOP VIEW OF 1/4" PLATE  
 USE 1/2" X 2" X 1/4" PLATES WELDED INSIDE OF CHANNELS  
 DRILL 1 3/16" HOLES



2" X 6" X 24" (0.2" / FT) CHANNEL (NEED 2)  
 NOTE: IF UNIT IS MADE WIDER, THEN INCREASE THE STRENGTH OF TOP CHANNELS TO 1/8" / FT AND THE BASE PLATES TO 3/4" X 1/4" PLATE.

SPACER AROUND 3/4" BOLTS

FRONT VIEW

SIDE VIEW

SCALE: 1/4" = 1'-0"

30 TON PRESS (CONSTR. DETAILS)			
SCALE	DRAWN BY R. GOSSETT		
	REVISED V. NORMAN		
PREPARED BY NDSU EXTENSIONAL AG. ENGR. DEPT.			
DATE	APPROVED BY	DRAWING NUMBER	
3/5/79	NO. 343-1-1	SHT. 1 OF 1	