

PLAN VIEW... UNIT #1

THIS UNIT IS DESIGNED TO PULL A MAXIMUM OF 28 FEET OF DRILL OR TILLAGE EQUIPMENT. THE HITCH IS OF A WELDED-RIGID TYPE CONSTRUCTION.

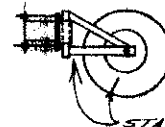
LIST of MATERIALS

UNIT #1

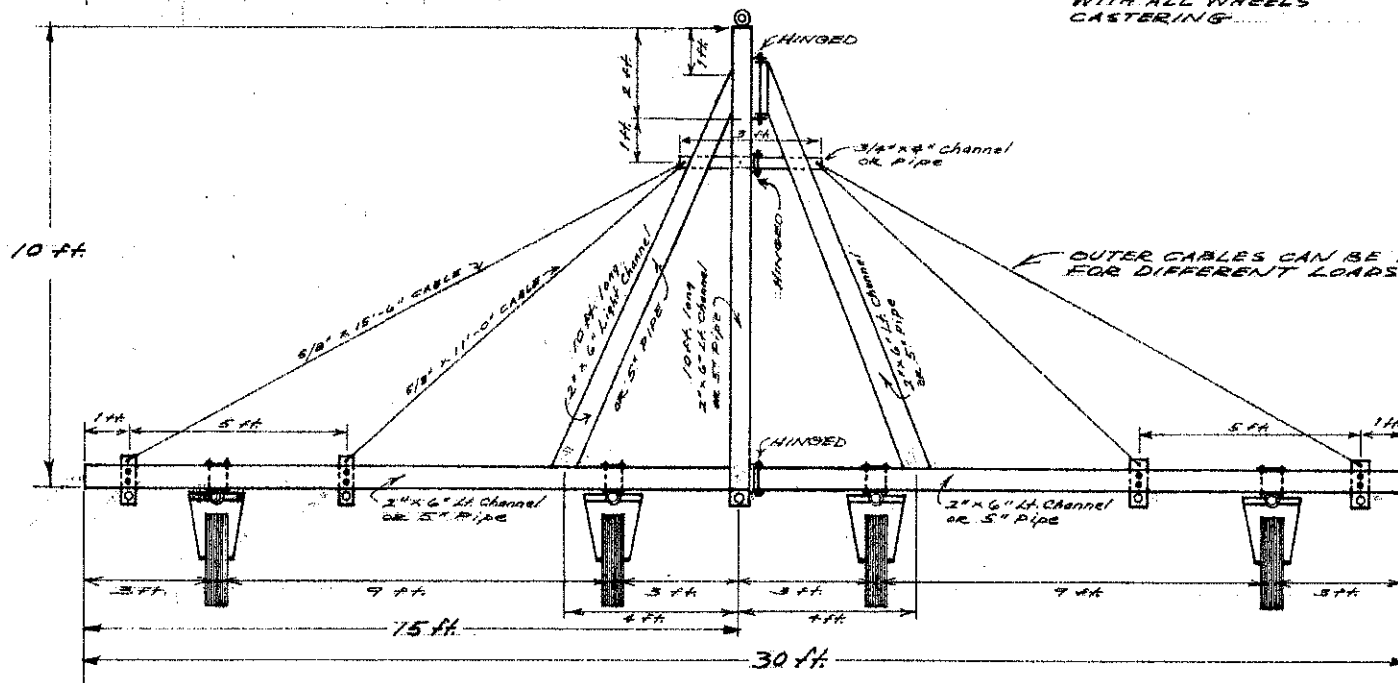
- 32 FEET of 3" x 3" x 1/4" CHANNEL OR
- 32 FEET of 3" PIPE

UNIT #2

- 60 FEET of 2" x 6" LIGHT CHANNEL OR
- 60 FEET of 5" PIPE
- 4 FEET of 3/4" x 4" CHANNEL
- 53 FEET of 5/8" CABLE



STANDARD SIZE TIRES WITH ALL WHEELS CASTERS



PLAN VIEW... UNIT #2

THIS UNIT IS DESIGNED TO PULL A MAXIMUM OF 40 FEET OF DRILL OR TILLAGE EQUIPMENT. THE ASSEMBLY IS HINGED FOR FLEXIBILITY OVER TERRAIN AND FOR POSSIBLE RAISING OF ONE SIDE FOR TRANSPORT. HEIGHT OF HITCH IS 16" FROM GROUND TO DRAW BAR.

OUTER CABLES CAN BE POSITIONED FOR DIFFERENT LOADS.

MULTIPLE - HITCHES

N.D. PLAN 311-1-2		SCALE 1/4" = 1'	DRAWN BY D. Horvath
PREPARED BY NDSU EXTENSION AGR. ENGR. DEPT.		DATE June 1967	REVISION
DATE	APPROVED BY	DRAWING NUMBER Sheet 1 of 1	