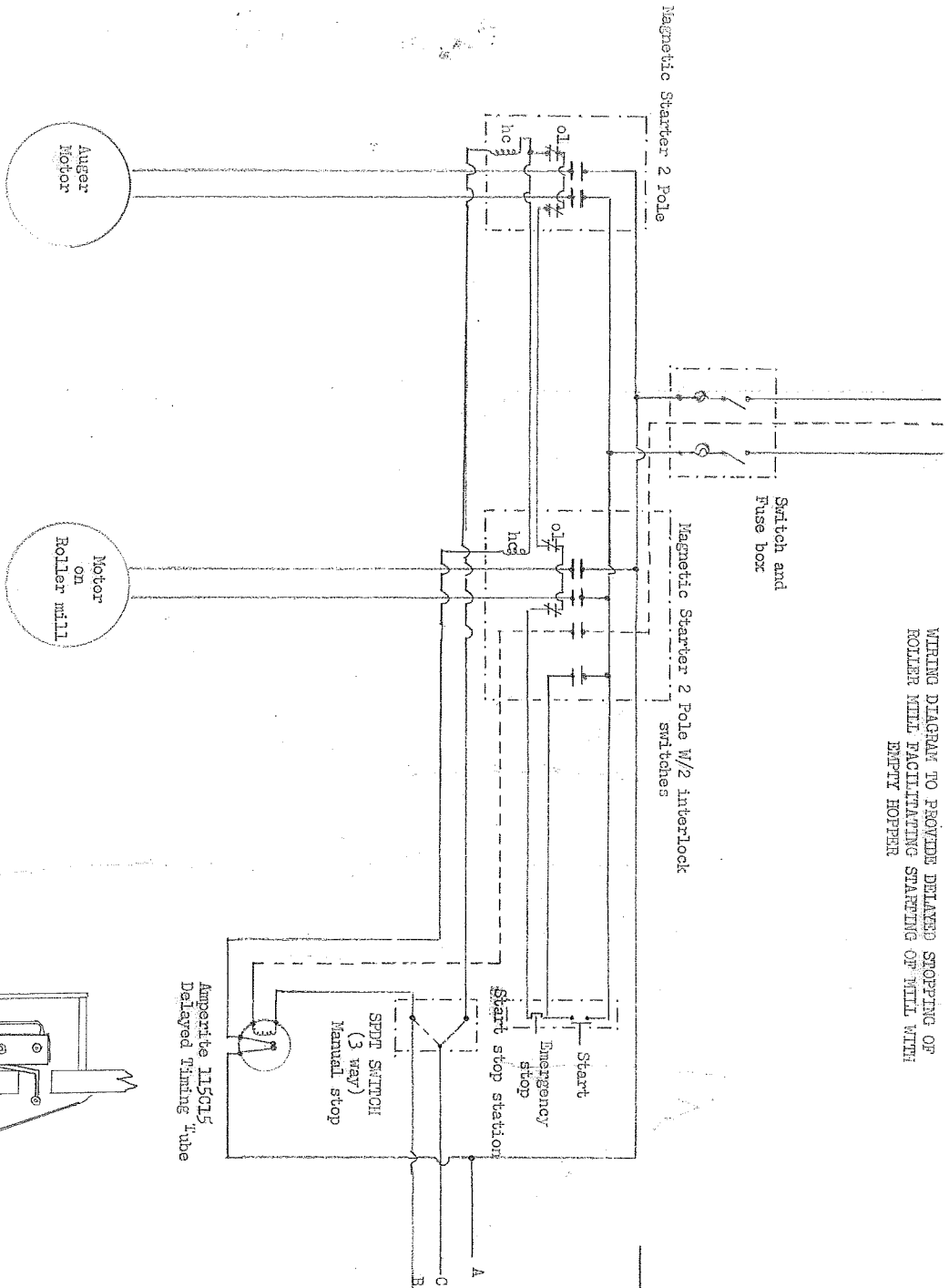
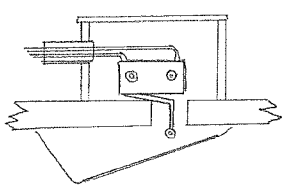


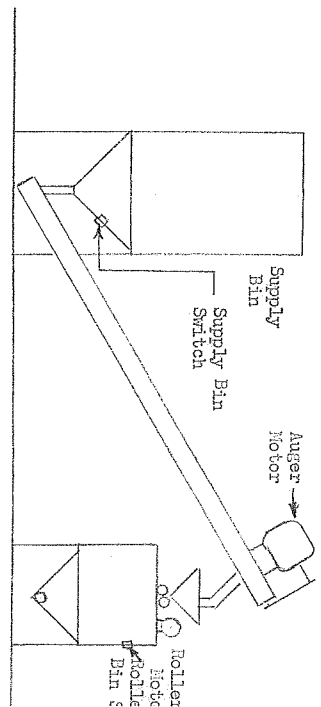
WIRING DIAGRAM TO PROVIDE DELAYED STOPPING OF  
ROLLER MILL FACILITATING STARTING OF MILL WITH  
EMPTY HOPPER



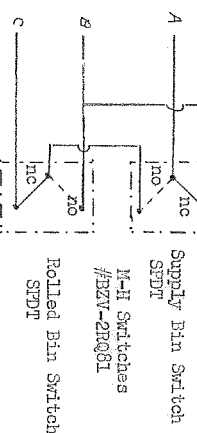
NOTE: hc- Holding coil, ol- overload element,  
For manual operation only join A and C at a common point.  
Follow electric codes on use of Dust-tube motors and controls.  
TO START: Push start on Startstop station, then switch SPDT switch.  
TO STOP MANUAL: Switch SPDT switch.  
EMERGENCY STOP: Push stop on start-stop station or pull main switch.



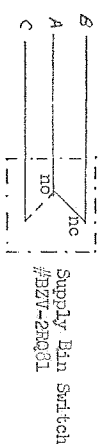
Switch operated  
by grain pressure



Switches in both bins,  
MILL will stop automatically if supply  
bin runs empty or rolled feed bin is full



Supply Bin Switch  
MILL will stop if bin empty



Supply Bin Switch  
MILL will stop if bin is empty



Rolled Bin Switch  
#BZY-2RQ81

ND 231-a-2

AUTOMATIC STOP CONTROL  
ROLLER MILL & GRAIN AUGER  
NDSV EXT. MGRIC. ENG NG