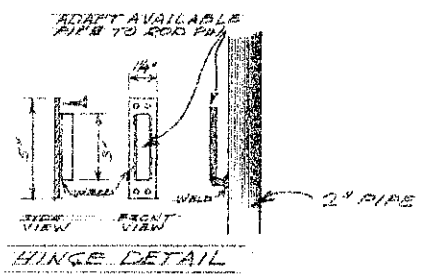
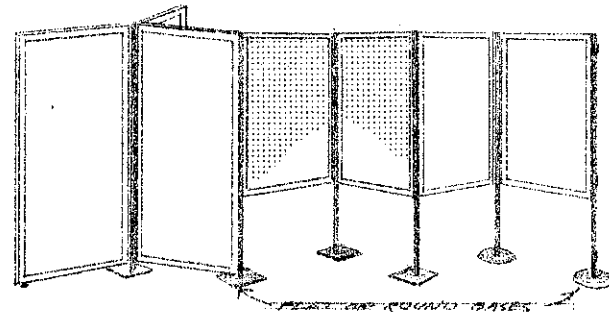
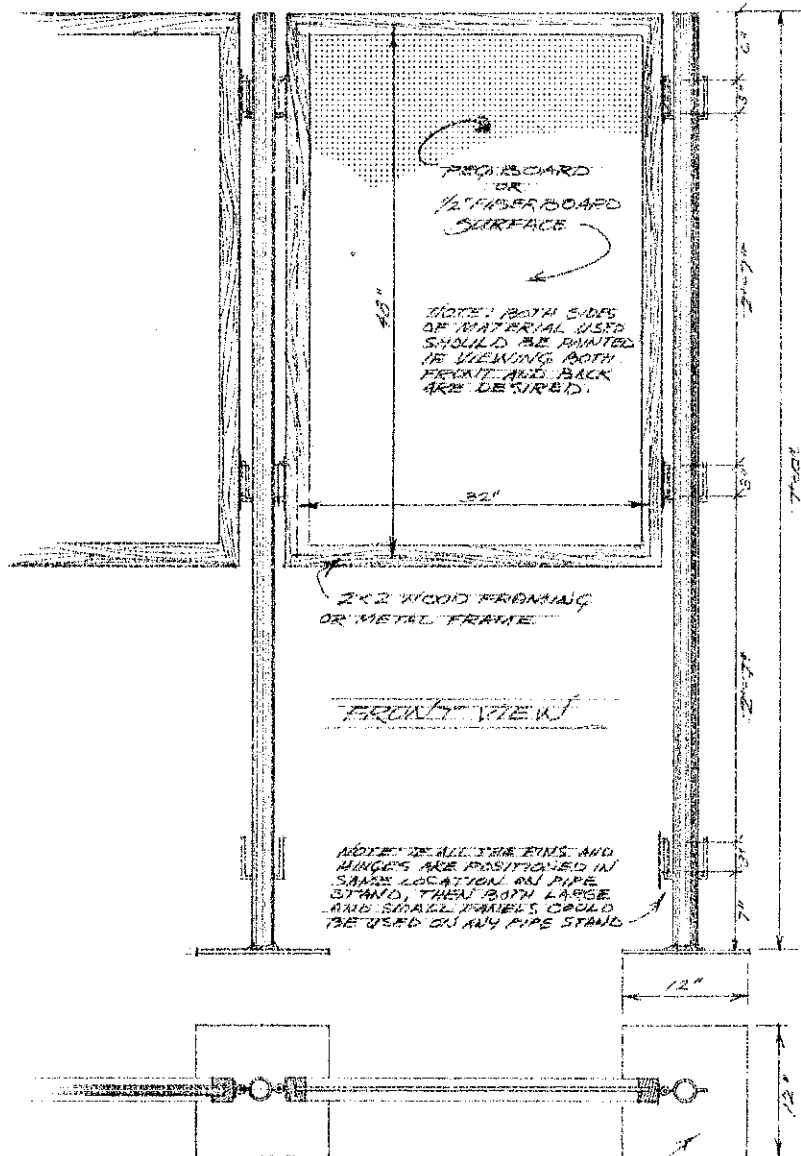


NOTE: A LIGHT WEIGHT STEEL OR ALUMINUM U-CHANNEL MAY BE USED INSTEAD OF WOOD FRAMING.

1/4" X 1/2" X 1/2" FLAT IRON BASE OR ANY OTHER SUITABLE BASE MAY BE USED.

PORTABLE DISPLAY PANELS			
PREPARED FOR STATE FAIR & EXHIBITS MINNETONKA, MINN. DAKOTA	SCALE	DRAWN BY R. CASSETTE	
PREPARED BY NDSU EXTENSION AG. ENG. DEPT.	DATE 2/2/79	APPROVED BY ND 161-L-7	REVISED
			DRAWING NUMBER SHT. 1 of 2



USE 1/2" X 1/2" FLAT IRON BASE OR ANY OTHER SUITABLE BASE MAY BE USED.

SCALE 1/4" = 1'-0"

PORTABLE DISPLAY PANELS			
PREPARED BY STATE FAIR & EXHIBIT MINOT, NORTH DAKOTA	SCALE	DRAWN BY ROSSAT'E REVISED	
PREPARED BY NDSU EXTENSION AG. ENGR. DEPT.			
DATE 2/12/79	APPROVED BY ND 161-1-7	DRAWING NUMBER SHT. 2 OF 2	