

3/4" X 1 3/4" WOOD FRAME MAY BE FINISHED WITH STAIN AND 2 COATS OF SATIN VARNISH OR PAINTED 1 COAT PRIMER AND 1 COAT (DESIRED COLOR) OF SATIN ENAMEL TO COMPLEMENT THE BACKGROUND PANELS.

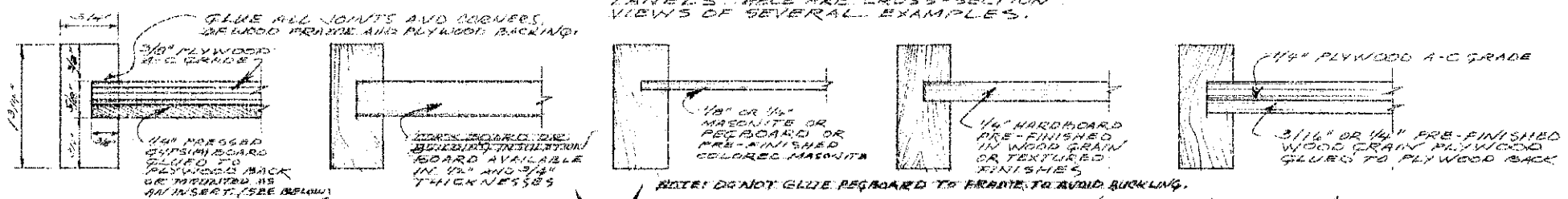
FRONT VIEW  
SCALE: 1/4" = 1 INCH

THIS IS A VIEW OF 3 PANEL UNIT, 2 OR 4 PANEL UNITS MAY BE MADE BY HINGING 2 SIDE PANELS TOGETHER WITH PIANO HINGES, THEN FASTEN EACH 2 PANEL UNITS TOGETHER WITH REGULAR FLAT HINGES.

SIDE PANELS FOLD OVER CENTER PANEL

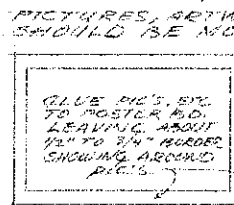
SIDE VIEW

NOTE: SEVERAL DIFFERENT MATERIALS CAN BE USED FOR BACKGROUND PANELS. HERE ARE CROSS-SECTION VIEWS OF SEVERAL EXAMPLES.



THESE SURFACES CAN BE PAINTED WITH LATEX OR OIL-BASED PAINTS. TACKS OR STAPLES CAN BE USED FOR MOUNTING PICTURES AND INFORMATION. OTHER METHODS SUCH AS FASTENERS, SCREWS, ADHESIVES, OR TAPE WOULD BE NEEDED ON THE PEGBOARD OR HARDBOARD SURFACES.

NOTE: GYPSUM BOARD OR INSULATION BOARD MAY BE PAINTED OR COVERED WITH CLOTH MATERIAL.



MOUNT BLACK & WHITE PIC'S ON COLORED POSTER BOARD IF COMPLEMENTARY COLOR SCHEME IS DESIRED. INFO PANELS, ARTWORK, OR SPECIMENS SHOULD BE MOUNTED IN SAME MANNER.

COLORED PIC'S OR ARTWORK CAN BE MOUNTED FLUSH TO EDGES OF BOARD IF COLOR IS UNCOMPLEMENTARY TO PIC'S.

PORTABLE EXHIBIT PANELS			
SCALE	DRAWN BY	REVISED	
	R. C. ...		
PREPARED BY NDSU EXTENSION AGE ENGR. DEPT.			
DATE Aug '74	APPROVED BY RD. 161-1-R	DRAWING NUMBER SHT. 1 OF 1	