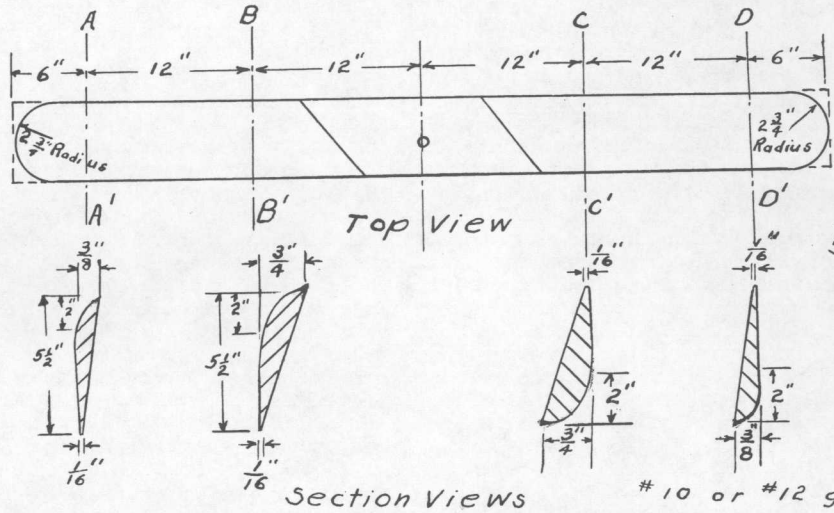
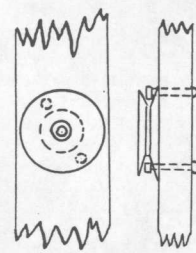


General View

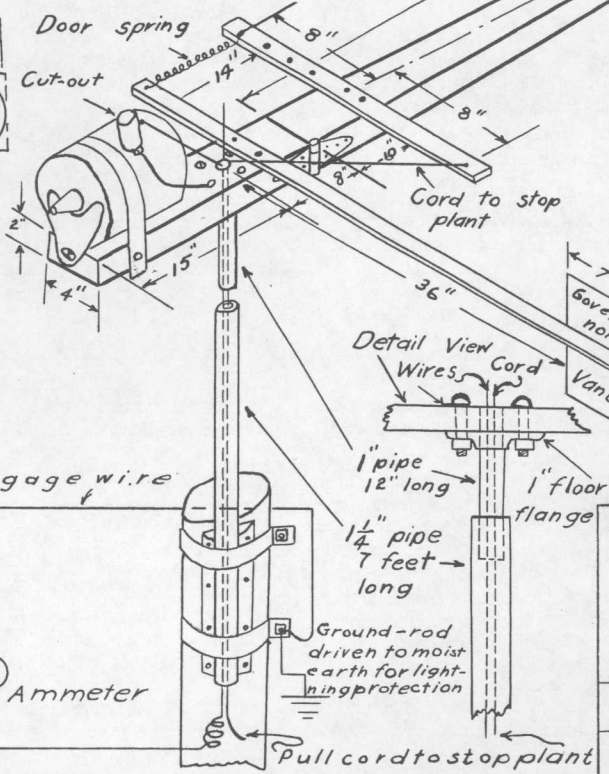
This design best for larger size heavy-weight 6 volt generators



Top View

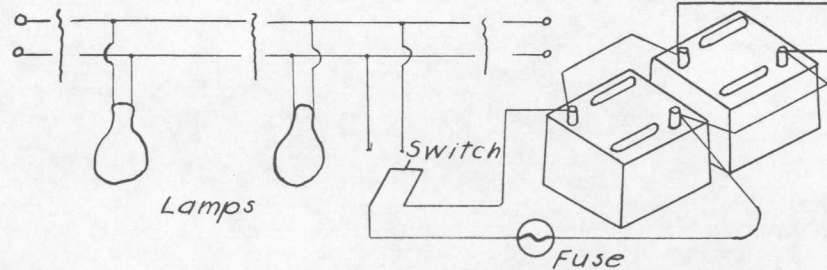
Section Views

# 10 or # 12 gage wire



List of Materials

- Generator with cut out and pulley
- 2-6 volt batteries
- 5 foot impeller
- Sheet metal: 23"x11" and 7"x7"
- 1 can enamel top paint plant
- Hard wood strip 64"x1 1/2"x 3/4"
- 1 screen door spring
- 10" heavy gate hinge with screws
- 1 knife switch (optional)
- 12" of 1" pipe; 7 feet of 1/4" pipe
- One 1" floor flange
- 1-20 ampere fuse and socket
- 4- 1/4"x1 1/4" bolts; 4- 1/4"x2 1/2" bolts
- 6 volt Mazda lamps & receptacles
- 50 feet or more of #10 gage
- 7" electric wire
- 20 feet sash cord
- 7 feet strap iron (for holding pipe and generator)



Lamps

Switch

Fuse

Ammeter

COOPERATIVE EXTENSION WORK IN  
 AGRICULTURE AND HOME ECONOMICS  
 STATE OF NORTH DAKOTA  
 NORTH DAKOTA AGRICULTURAL COLLEGE  
 AND  
 U. S. DEPT. OF AGRICULTURE COOPERATING  
 EXT. AGR'L. ENGINEER- FARGO, N. DAK.  
 SIX VOLT BATTERY CHARGER  
 AND LIGHTING SYSTEM  
 PLAN NO.-N.D.43-1-DRAWN BY-KG. SEPT. 28, '35.