

LIST OF DRAWINGS

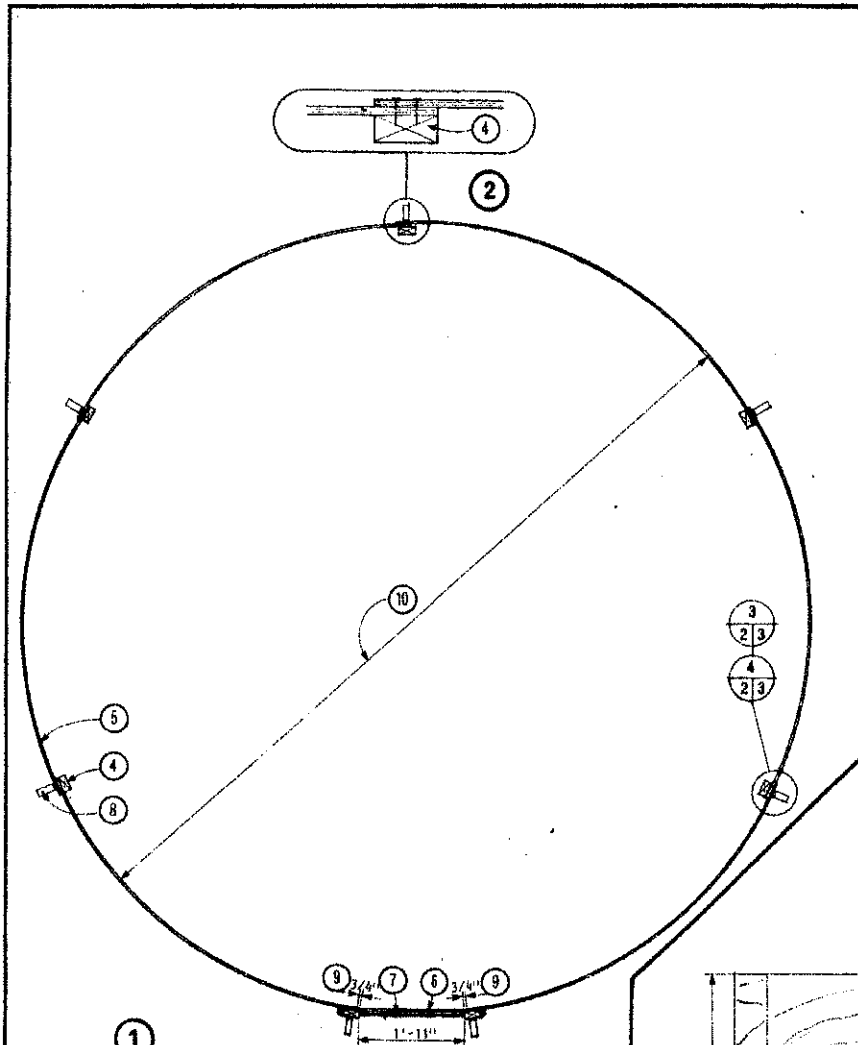
sheet no.	title
1	CIRCULAR PORTABLE FERTILIZER BIN - 4 FEET HIGH
2	PLAN & ELEVATION
3	NAILING SCHEDULES & DETAILS

SYM	REVISIONS	CHECKED	DATE	APPROVED



CIRCULAR PORTABLE FERTILIZER BIN - 4 FEET HIGH

DESIGNED <i>J.E.T.</i>	DATE JULY/77	PLAN
DRAWN <i>R. PELLA</i>	REVISED	8422
CHECKED <i>H.A.J.</i>	H.A.J.	SHEET 1 OF 3

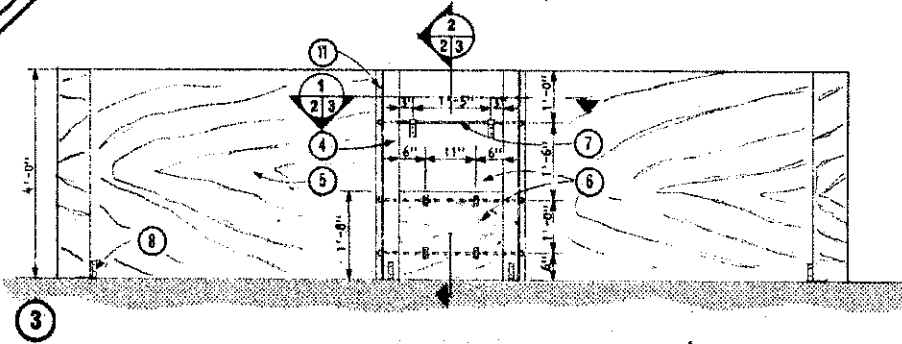


**BIN SIZE SPECIFICATIONS:**

	Nominal Bin Diameter		
	10'	15'	20'
Number of 5/16" plywood sheets required ('sheathing' grade fir)	4 pcs.	6 pcs.	8 pcs.
Bin diameter at joint line ⑩	10'-7"	15'-6"	20'-4"
Capacity of bin (level full) ⑬ (heaped full, 30° heaping angle) ⑭	11.4 tons 14.2 tons	24.4 tons 33.4 tons	42.3 tons 63.0 tons

**GENERAL SPECIFICATIONS:**

- Plywood:**  
Use 'sheathing' grade exterior fir plywood. Sanded grades offer no structural advantage in this application.
- Assembly of Bins:**  
Begin assembly by lightly nailing wood strips to one end of each plywood sheet. Overlap edge of second sheet 3/8" and drive 1 1/2" large head galvanized roofing nails thru joint and into nailing strip as indicated on nailing schedule.  
Seal all exposed nail heads with polyurethane paint or varnish.

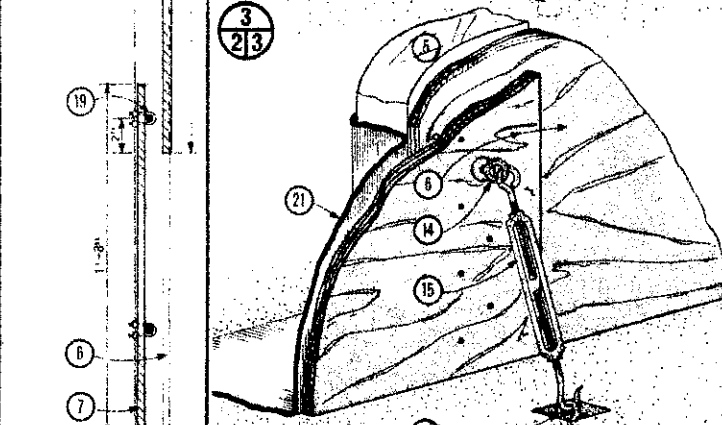
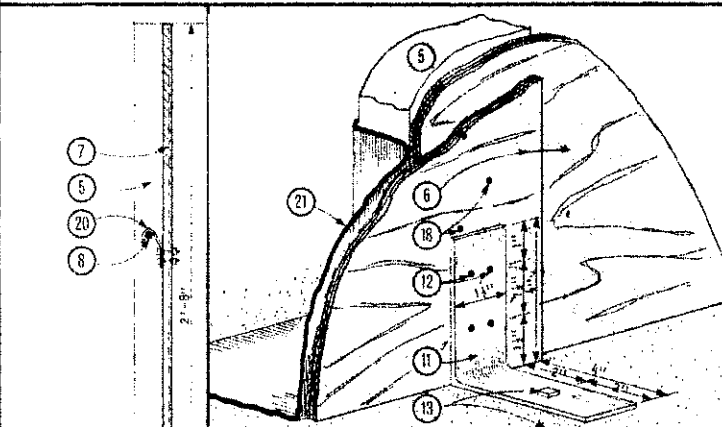
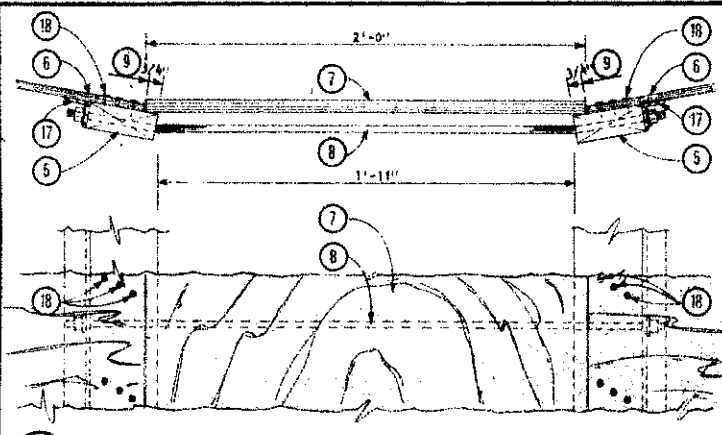
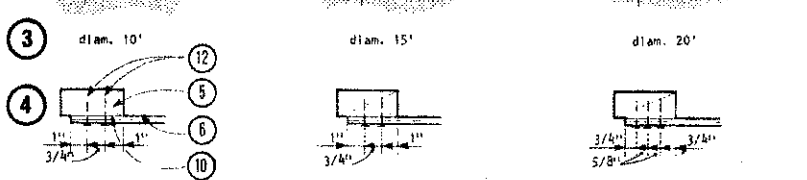
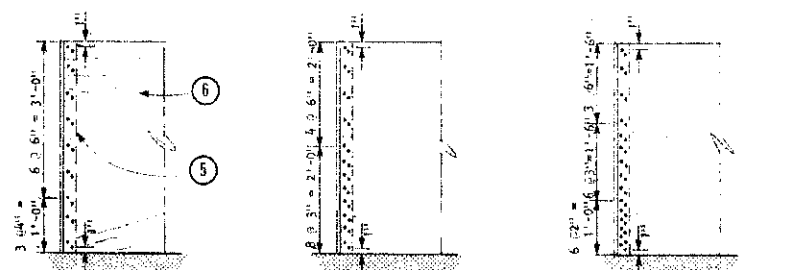
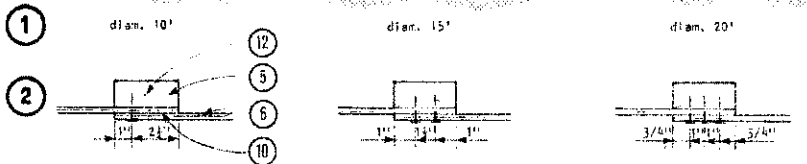
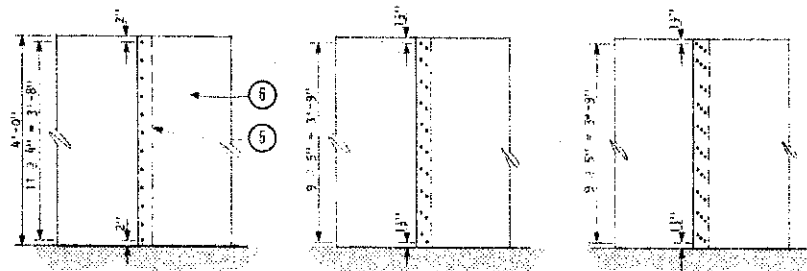


- plan of typical bin
- typical lap joint, see sheet 3 for nailing details
- bin elevation at access door
- 2" x 4" nailing strips, 1 at each joint
- 5/16" 'sheathing' grade exterior fir plywood bin walls
- 3/4" 'sheathing' grade exterior fir plywood access door panels
- 3/8" dia. x 3'-0" threaded steel rod, bright plated and oiled
- floor anchor, see ③ or ④
- set back plywood for access door
- bin diameter at joint line
- 1 1/2" x 1 1/2" x 3/16" x 4' steel angle
- capacities calculated assuming a fertilizer density of 65 lb/cu ft.

SYM	REVISIONS	CHECKED	DATE	APPROVED
-----	-----------	---------	------	----------

**CANADA PLAN SERVICE** PLAN & ELEVATION

DESIGNED / J.E.T.	DATE JULY/77	PLAN
DRAWN R. P.B.A.	REVISED	8422
TRACED	DATE NUMBER	SHEET 2 OF 3
CHECKED H.A.J.	APPROVED	



- 1 nailing schedules for typical lap joint, alternate bin diameters, seen from outside
- 2 typical nail spacing for schedules ①
- 3 nailing schedules for joint at access door, alternate diameters, seen from inside
- 4 typical nail spacing for schedules ③
- 5 2" x 4" nailing strips, 1 at each joint
- 6 5/16" sheathing grade exterior fir plywood bin walls
- 7 3/4" sheathing grade exterior fir plywood access door panels
- 8 3" diam. x 3'-0" threaded rod, bright plated and oiled
- 9 set back plywood for access door
- 10 joint line
- 11 anchor cut from 4" x 4" x 4" steel angle
- 12 1 1/2" large head galv. roofing nails
- 13 5/16" x 2" anchor bolt and expansion shield to match
- 14 3/8" galv. eyebolt and washers
- 15 3/8" galv. turnbuckle hook, all as req'd
- 16 anchor recessed in floor; from #3 rebar, rustproof painted
- 17 1 1/2" x 1 1/2" x 3/16" x 4" steel angle
- 18 1 1/2" large head galv. roofing nails, see nailing schedules ① or ②
- 19 4 - U-bolts and strap, secure plywood to threaded rod, remove nuts to open
- 20 strap hook, from 3/16" x 1" stock, 2 bolts to plywood
- 21 polyethylene liner for fertilizers tending to absorb moisture

SYM	REVISIONS	CHECKED	DATE	APPROVED
<b>NAILING SCHEDULES &amp; DETAILS</b>				<b>PLAN</b> <b>8422</b>
DESIGNED	✓ J.E.T.	DATE	JULY/77	PLAN
DRAWN	R. PALLA	REVISED		
TRACED		DETAIL NUMBER	A	
CHECKED	H.A.J.	DATE		