

GRAIN HANDLING CENTRE

LIST OF MATERIALS

CONCRETE Floors, Pits & Ramps 33 Cu. Yds.

RELATED MATERIALS

Sand 7 Cu. Yds.
 Reinforcing Steel: 3/8" # 4 x 1750 Lin. Ft.
 Steel Angle 5/8" # 4 x 48 Lin. Ft.
 Steel Anchor Bars 2 - 3"x24"x2"x12'-0"
 Steel Ladder Rungs - cut of 10 - 1"x3/16"x11'-0"
 2" # 4 x 31'-0"

LUMBER - WALLS

Posts (Pressure Treated) 8 - 6"x6"x18'-0"
 (Pressure Treated) 4 - 6"x6"x24'-0"
 Knee Braces 4 - 2"x6"x12'-0"
 Cleats 2 - 2"x6"x12'-0"
 Splash Planks (Pressure treated) 28 - 2"x6"x12'-0"
 16 - 2"x6"x12'-0"
 7 - 2"x6"x12'-0"
 Furlins 4 - 2"x10"x20'-0"
 4 - 2"x12"x20'-0"
 Filler 2 - 1"x10"x20'-0"
 2 - 3"x6"x14'-0"
 Door Frame 6 - 2"x10"x12'-0"
 Filler Frame 3 - 2"x2"x12'-0"
 Nailing Strips See Siding Manufacturer For Size & Spacing

ROOF SECTION

Rafters 12 - 2"x8"x18'-0"
 Rafter Ties 2 - 2"x6"x16'-0"
 Culler Ties 6 - 2"x6"x15'-0"
 Ridge Board 2 - 2"x8"x12'-0"
 Nailing Strips or Deck Decking See roofing manufacturer For Size & Spacing
 Gable Blocking 4 - 2"x6"x10'-0"
 Rafters 4 - 1"x6"x20'-0"
 Fascia 4 - 2"x10"x12'-0"

LINENERS - 2 RECTO

(Material for 1 only)
 Framing 2 - 2"x6"x10'-0"
 Slats 3 - 1"x6"x12'-0"

SLIDING DOOR 6'-0"x12'-0" (4 Reg'd)

(Material for 1 only)
 Stilts & Rails 4 - 2"x6"x12'-0"
 Sheathing 72 Sq. Ft.
 Double Steel Track (For 2 doors) 20 Lin. Ft.
 Track Brackets 9 only
 Roller Bearing Hangers 2 only
 Adjustable Stay Rollers 2 only

STEEL GRATING

End Girds 4 - 2"x10"x16"x12'-0"
 Bearing Bars 119 - 2"x3/16"x11'-0"
 Spacer Bars 11 - 1"x3/16"x12'-0"

EXTERIOR COVERING

Roofing (To Cover) 835 Sq. Ft.
 Siding (To Cover) 1265 Sq. Ft.
 Ridge Cap (To Cover) 22 Lin. Ft.

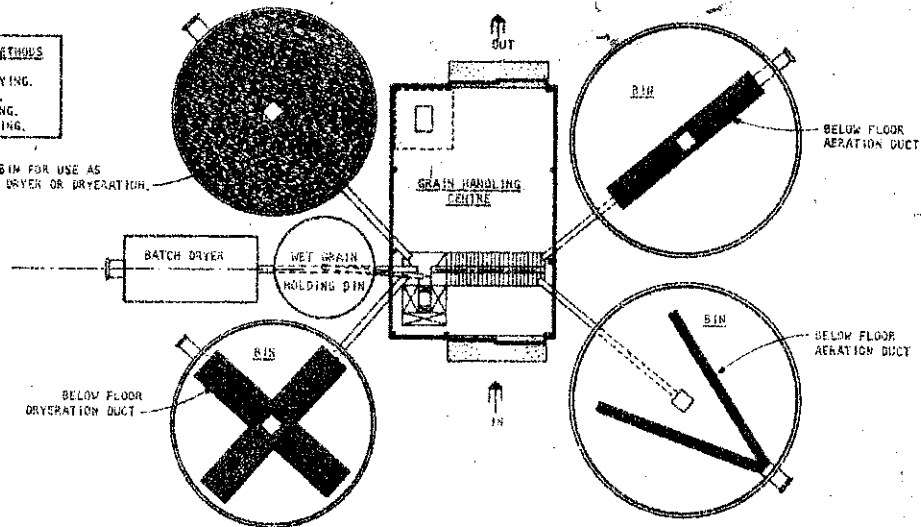
MISCELLANEOUS

Walls As req'd
 Electrical 30 wires
 Floor Drains 1 - 4" dia.
 Clay Tiles 15 - 4" dia.

GRAIN DRYING METHODS

1. IN-STORAGE LAYER DRYING.
2. BATCH-IN-BIN DRYING.
3. PORTABLE BATCH DRYING.
4. CONTINUOUS FLOW DRYING.

NOTE: FALSE FLOOR BIN FOR USE AS BATCH-IN-BIN DRYER OR DRYERATION.

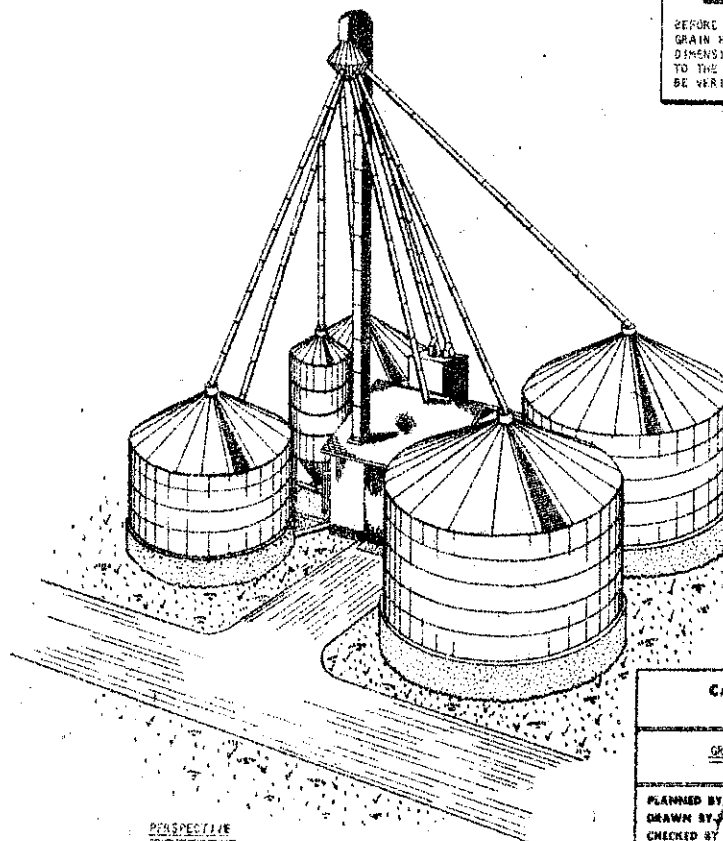


ALTERNATE GRAIN DRYING AND AERATION SYSTEMS

SCALE: 3/32" = 1'-0"

CONSTRUCTION NOTE

BEFORE CONSTRUCTING ANY PHASE OF THE GRAIN HANDLING AND STORAGE SYSTEM, ALL DIMENSIONS AND SPECIFICATIONS RELATING TO THE MATERIAL HANDLING EQUIPMENT MUST BE VERIFIED WITH THE EQUIPMENT MANUFACTURER.

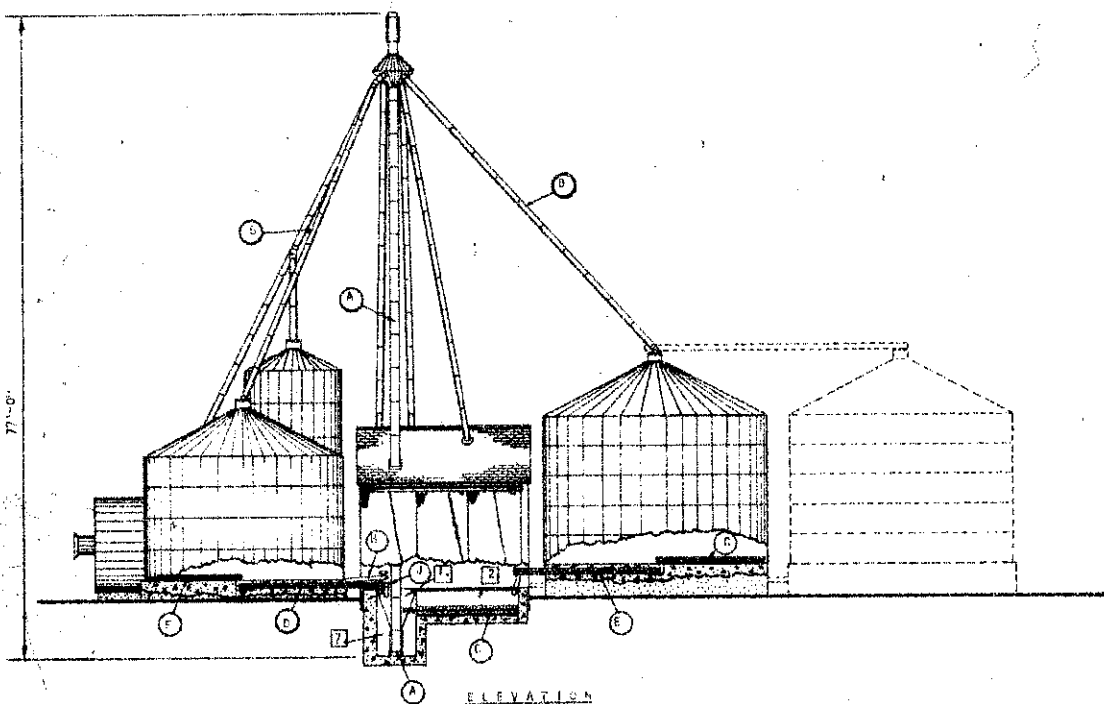


PERSPECTIVE

CANADIAN FARM BUILDING
 PLAN SERVICE

GRAIN HANDLING & STORAGE SYSTEMS

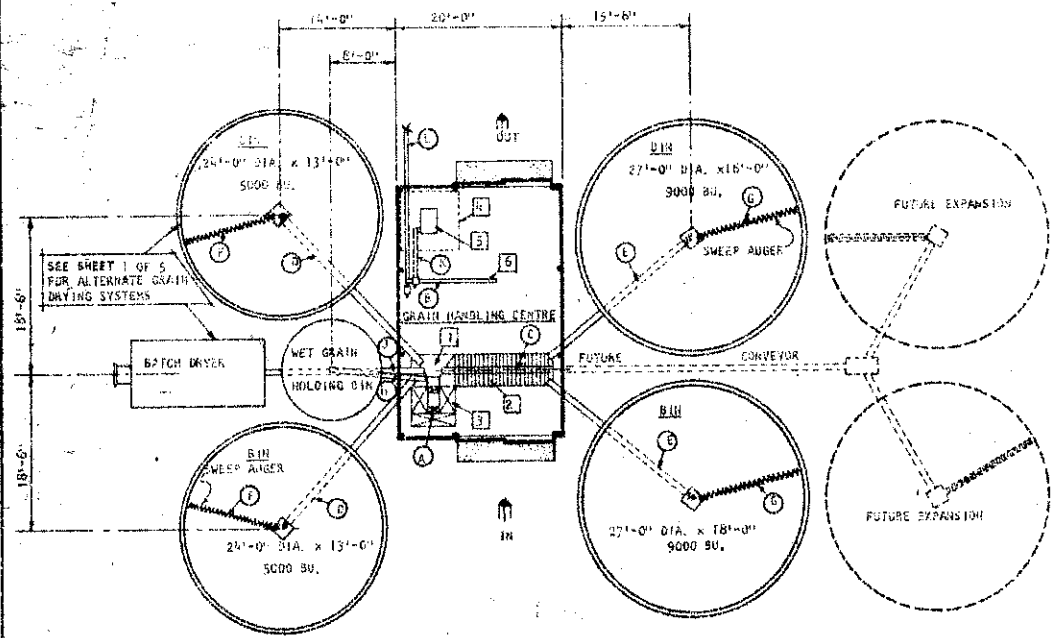
PLANNED BY: J.L.
 DRAWN BY: J.M.
 CHECKED BY: J.M.
 SCALE AS SHOWN
 SHEET 1 OF 5
 PLAN No. 7213



ELEVATION

LEGEND
GRAIN HANDLING EQUIPMENT
20000 BUSHEL CAPACITY (APPROXIMATE)
1500 - 2000 BU/HR FLOW RATE

EQUIPMENT	CODE	LENGTH OR HEIGHT FEET	SIZE	ESTIMATE	
				CAPACITY BU/HR	H-P
BUCKET ELEVATOR	(A)	77'-0"	9"x5" 8"x6"	1500 - 2000	5 - 7.5
GRAVITY SPOUTS	(B)		6"		
DUMP PIT CROSS AUGER	(C)	13	10"	1500 - 2000	3
UNDER FLOOR AUGER	(D)	25	6"	1500	3
UNDER FLOOR AUGER	(E)	23	6"	1500	3
SWEEP AUGER	(F)	11.5	6"	1000 - 1200	1
SWEEP AUGER	(G)	13	6"	1000 - 1200	1.5
WET BIN UNLOADING AUGER	(H)	12	8"	1500	3
DRYER UNLOADING AUGER	(I)	19	8"	1500	3
FEED MILL UNLOADING AUGER	(J)	16	4"	250	1.5
CONVEYING AUGER TO STORAGE OR ALTERNATE TRUCK LOAD OUT.	(L)	VARIABLE	4"		



P.L.A.N

KEY

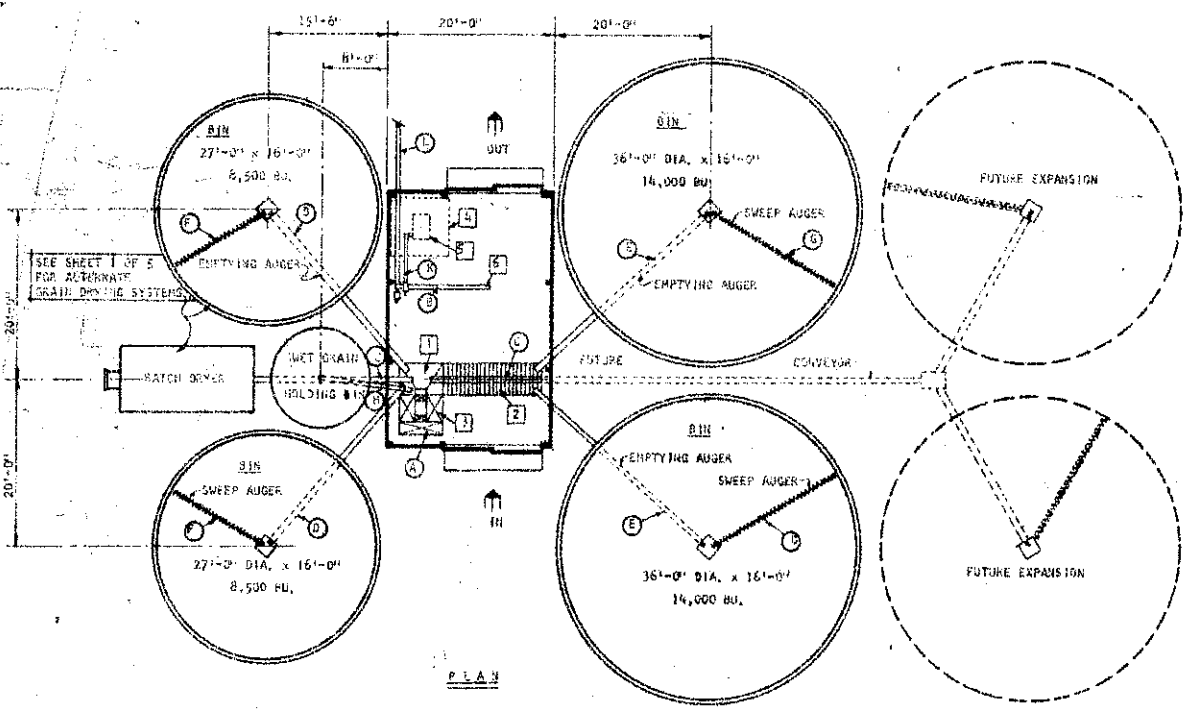
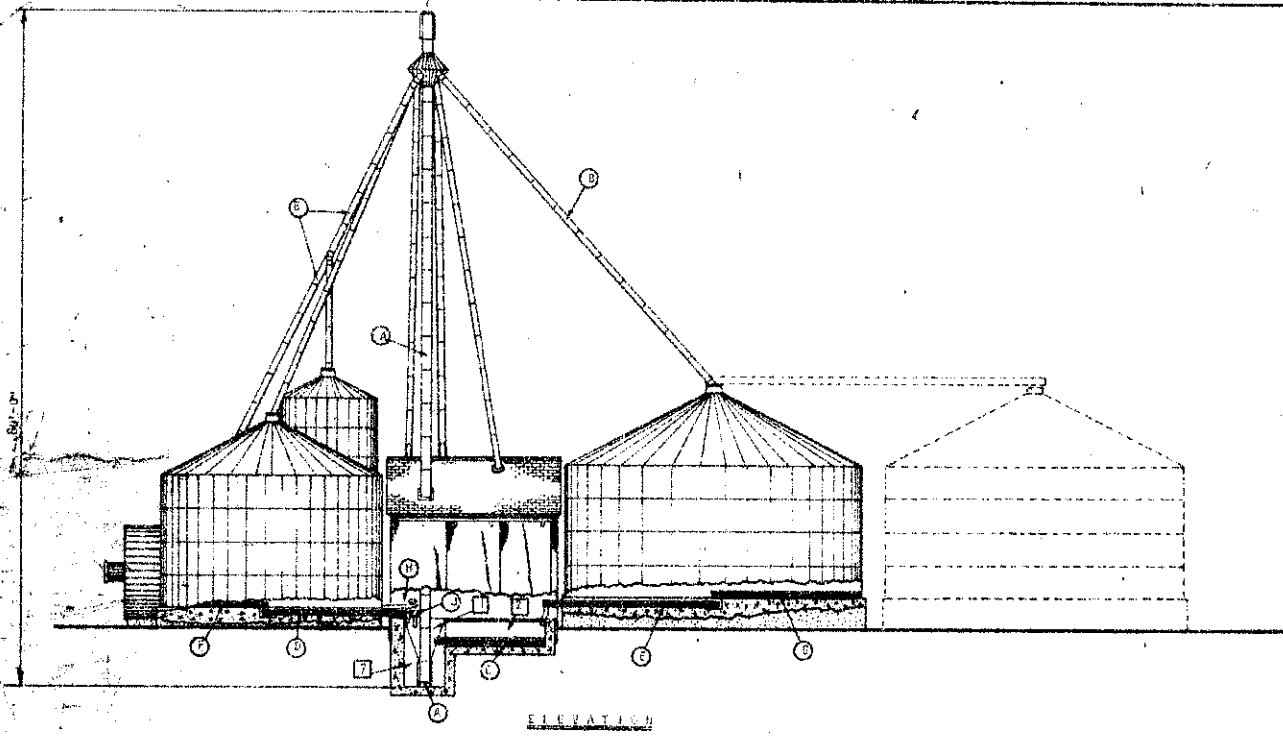
- 1. BOOT HOPPER
- 2. DUMP PIT
- 3. BOOT ACCESS HATCHES
- 4. OVERHEAD WORKING BINS
- 5. FEED MILL
- 6. TRUCK LOADOUT
- 7. ELEVATOR BOOT PIT

5000 BU. - 28000 BU. CAPACITY

**CANADIAN FARM BUILDING
PLAN SERVICE**

GRAIN HANDLING & STORAGE SYSTEMS

PLANNED BY <i>J. H. J.</i>	SCALE 3/32" = 1'-0"	PLAN No.
DRAWN BY <i>J. H. J.</i>	SHEET 2 OF 5	7219
CHECKED BY <i>J. H. J.</i>		



LEGEND
GRAIN HANDLING EQUIPMENT
45,000 BUSHEL CAPACITY (APPROXIMATE)
2,400 - 3,000 BU/HR FLOW RATE

EQUIPMENT	CODE	LENGTH OR HEIGHT FEET	SIZE	ESTIMATED	
				CAPACITY BU/HR	H.P.
BUCKET ELEVATOR	(A)	80	9' x 6' 11' x 6'	2500 - 3000	7.5 - 10
GRAVITY SPOUTS	(B)				
DUMP PIT CROSS AUGER	(C)	13	12"	2500 - 3000	5
UNDER FLOOR AUGER	(D)	27	8"	2500	7.5
UNDER FLOOR AUGER	(E)	29	8"	2500	7.5
SWEEP AUGER	(F)	13	6"	1000 - 1200	1.5
SWEEP AUGER	(G)	17.5	6"	1000 - 1200	2
WET BIN UNLOADING AUGER	(H)	12	8"	2500	9
DRYER UNLOADING AUGER	(I)	19	8"	2500	5
FEED HILL UNLOADING AUGER	(J)	16	4"	250	1.5
CONVEYING AUGER TO STORAGE OR ALTERNATE TRUCK LOAD OUT	(L)	VARIABLE	4"		

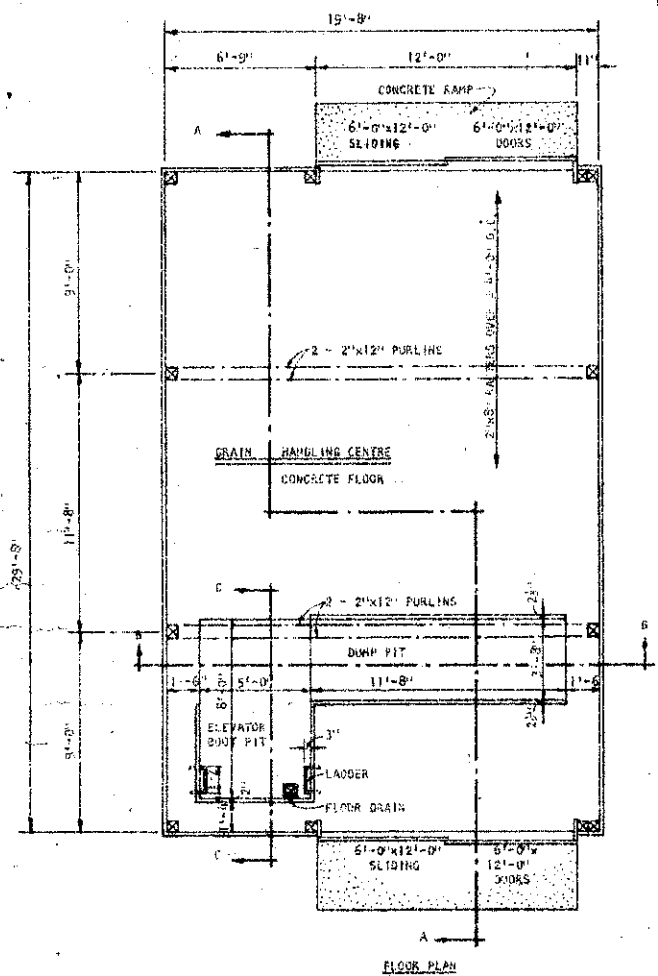
- KEY**
- 1 BOOT HOPPER
 - 2 DUMP PIT
 - 3 BOOT ACCESS HATCHES
 - 4 OVERHEAD WORKING BINS
 - 5 FEED HILL
 - 6 TRUCK LOADOUT
 - 7 ELEVATOR BOOT PIT

CANADIAN FARM BUILDING PLAN SERVICE

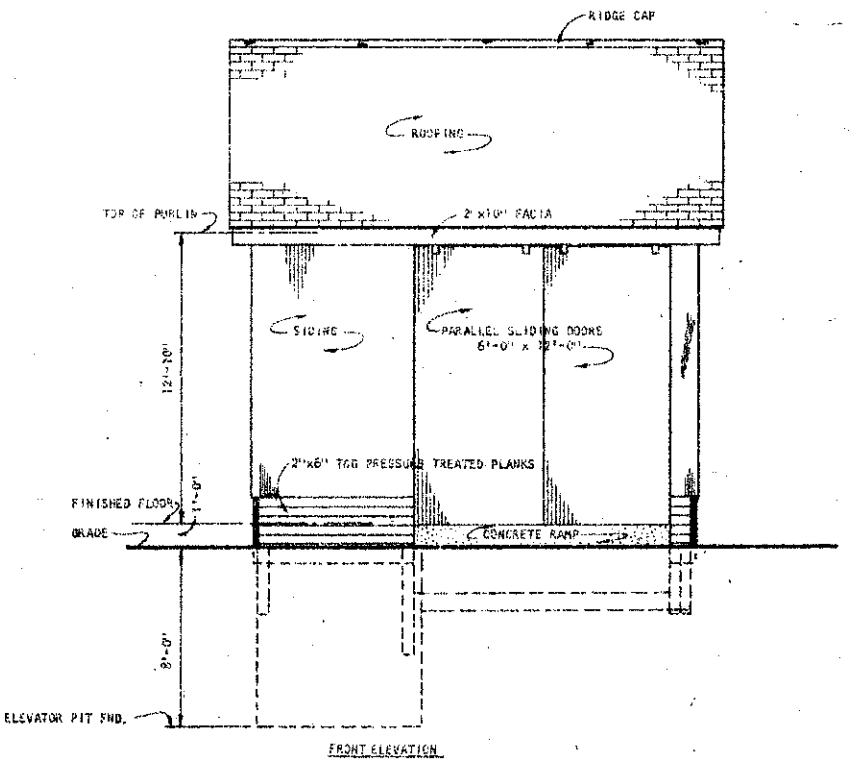
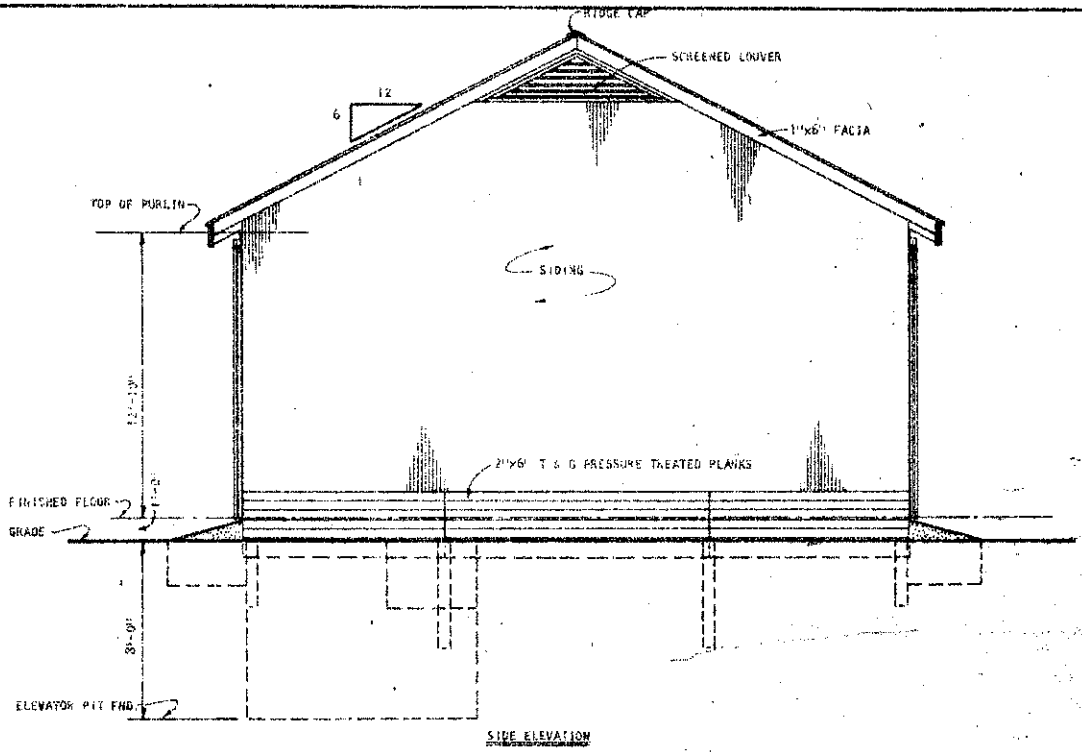
GRAIN HANDLING & STORAGE SYSTEMS

PLANNED BY <i>J.H.</i>	SCALE 3/32" = 1'-0"	PLAN No.
DRAWN BY <i>J.C.M.</i>	SHEET 3 OF 5	7210
CHECKED BY <i>J.H.</i>		

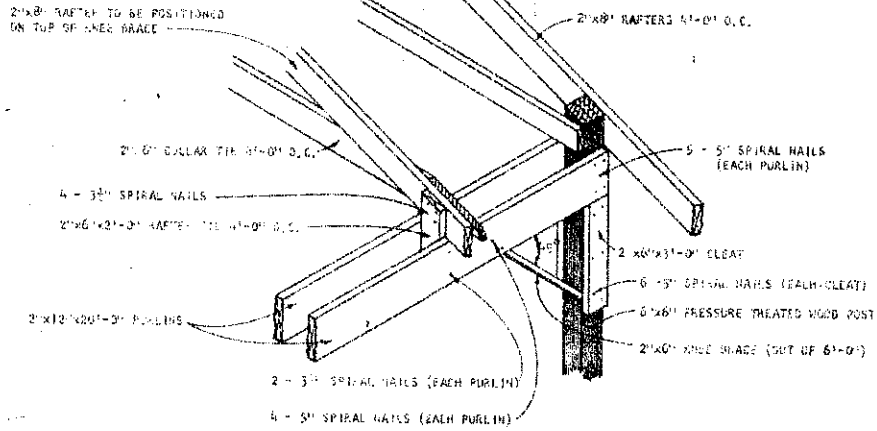
8,500 BU. = 45,000 BU. CAPACITY



CONSTRUCTION NOTE
 BEFORE CONSTRUCTING ANY PHASE OF THE GRAIN HANDLING AND STORAGE SYSTEM, ALL DIMENSIONS AND SPECIFICATIONS RELATING TO THE MATERIAL HANDLING EQUIPMENT MUST BE VERIFIED WITH THE EQUIPMENT MANUFACTURER.

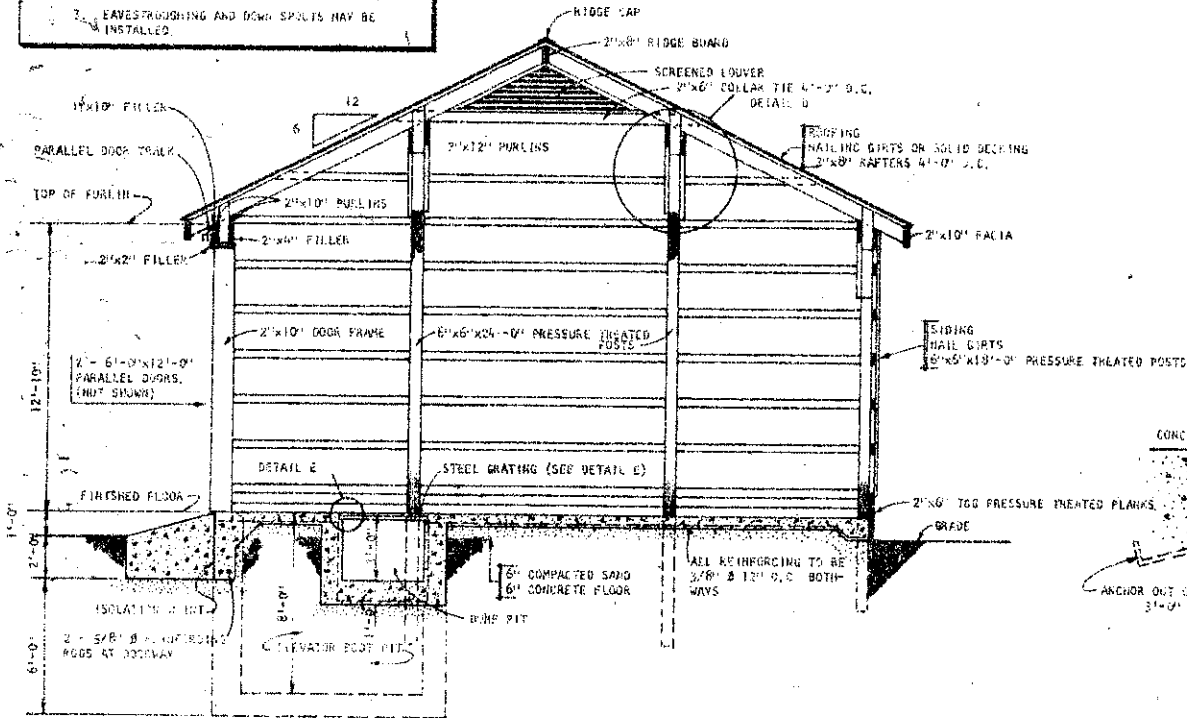


CANADIAN FARM BUILDING PLAN SERVICE		
GRAIN HANDLING & STORAGE SYSTEMS		
PLANNED BY <i>AKL</i>	SCALE 1/4" = 1'-0"	PLAN No.
DRAWN BY <i>JWH</i>	SHEET 6 OF 5	7210
CHECKED BY <i>JWH</i>		

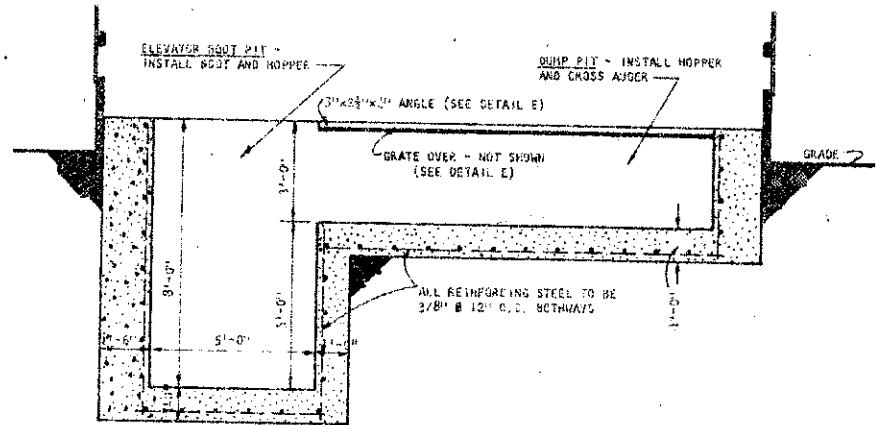


PURLIN POST DETAIL D
SCALE: 3/8" = 1'-0"

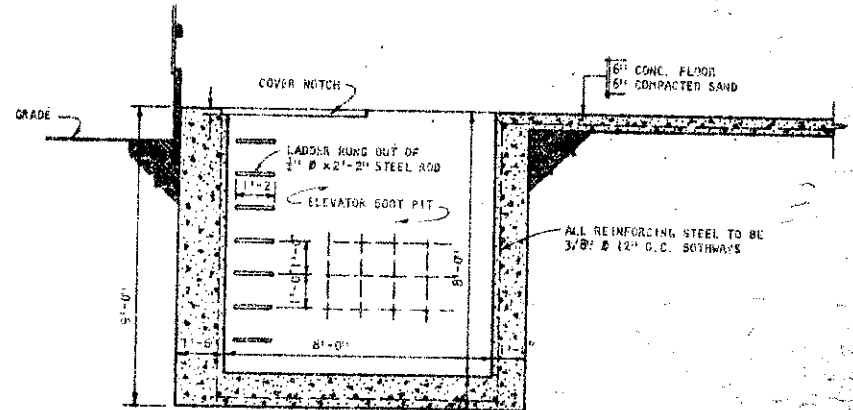
- NOTE:
1. SEE SPECIFICATIONS OF ROOFING MANUFACTURER FOR ROOFING MATERIAL AND HAILING GIRTS.
 2. SEE SPECIFICATIONS OF SIDING MANUFACTURER FOR SIDING MATERIAL AND HAILING GIRTS.
 3. EAVESFLASHING AND DOWN SPOUTS MAY BE INSTALLED.



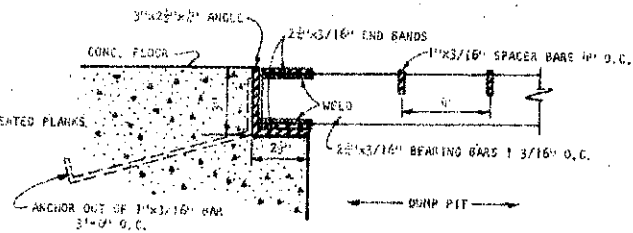
CROSS SECTION A-A
SCALE: 3/8" = 1'-0"



SECTION B-B
SCALE: 3/8" = 1'-0"



SECTION C-C
SCALE: 3/8" = 1'-0"



DETAIL E
SCALE: 3/8" = 1'-0"

**CANADIAN FARM BUILDING
PLAN SERVICE**

GRAIN HANDLING & STORAGE SYSTEMS

PLANNED BY <i>D.V.L.</i>	SCALE AS SHOWN	PLAN No.
DRAWN BY <i>J.A.M.</i>	SHEET 5 OF 5	7210
CHECKED BY <i>F.H.S.</i>		