

1. ELEVATION OF TRUSS
2. GUSSET CUTTING DETAIL
3. JOINT "B" NAILING DETAIL
4. JOINT "C" NAILING DETAIL
5. JOINT "Y" NAILING DETAIL
6. JOINT "A" NAILING DETAIL
7. NOTATION AND LOADING DIAGRAM
8. 1/2" PLYWOOD GUSSETS (BOTH SIDES) AT ALL JOINTS
9. 2" x 12" TOP CHORD
10. BOTTOM CHORD SHOULD BE CAMBERED 1 1/2" AT CENTER
11. 2" x 4" WEB MEMBERS 5'-0" LONG
12. 2" x 4" WEB MEMBERS 11'-4" LONG
13. 2" x 6" BOTTOM CHORD
14. 2" x 4" WOOD BLOCKING - GRAIN TO BE VERTICAL
15. ALL JOINTS MUST BE TIGHT. FIT MEMBERS FULL SCALE BEFORE CUTTING.
16. [Symbol] DENOTES NUMBER OF NAILS FROM EACH SIDE
17. 2" x 4" STIFFENERS, CONTINUOUS
18. JOINT "X" NAILING DETAIL

NOTES:

FOR 2" x 4" MEMBERS USE CONSTRUCTION GRADE DOUGLAS FIR IN THE "LIGHT FRAMING" CATEGORY OR NO. 2 OR BETTER DOUGLAS FIR IN THE "STRUCTURAL FRAMING" CATEGORY.

FOR 2" x 6" OR WIDER MEMBERS USE NO. 2 OR BETTER DOUGLAS FIR.

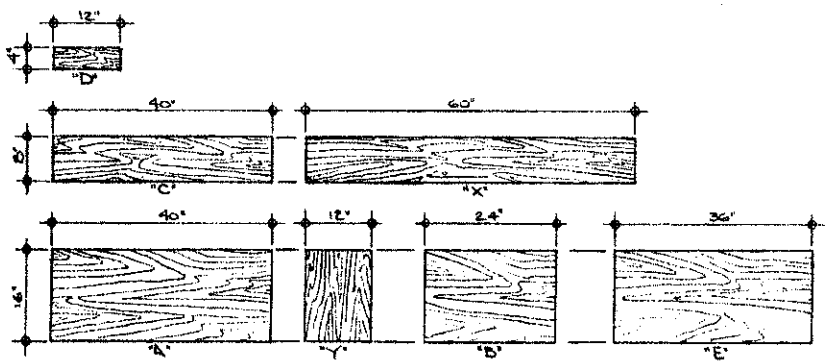
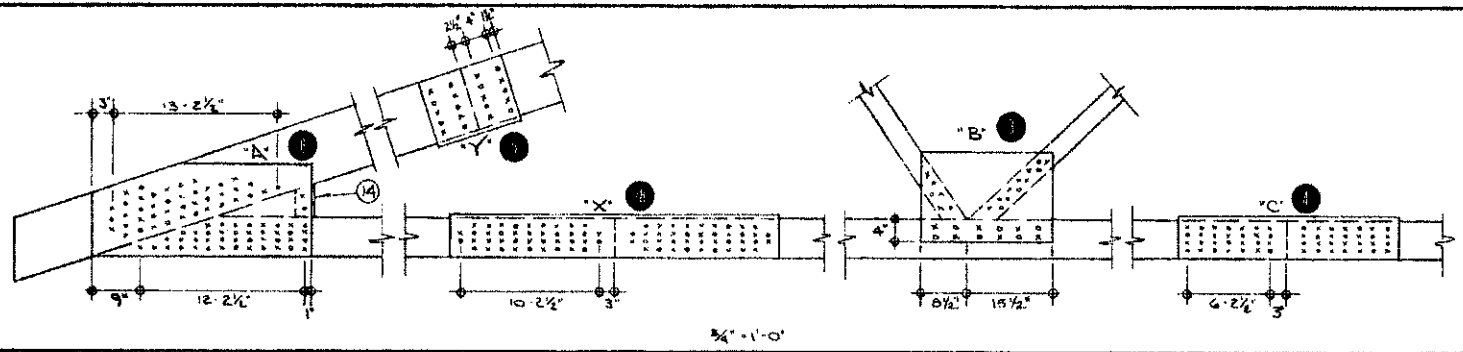
PLYWOOD TO BE 1/2" SHEATHING GRADE DOUGLAS FIR.

NAILS TO BE 2 1/2" NO. 8 GAUGE TRUSS GUSSET TYPE (BY THE STEEL COMPANY OF CANADA OR EQUIVALENT)

TOTAL ROOF LOAD IS LIVE LOAD PLUS DEAD LOAD. SEE TABLE F-1, CANADIAN CODE FOR FARM BUILDINGS 1970, FOR FARM TRUSS ROOF CONSTRUCTION DEAD LOADS.

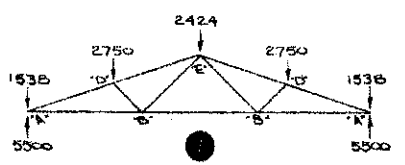
THE ALLOWABLE UNIT STRESSES FOR SAWN LUMBER AND PLYWOOD USED IN THIS TRUSS DESIGN ARE THOSE LISTED IN "THE CANADIAN STRUCTURAL DESIGN MANUAL 1970" WITH THE FOLLOWING MODIFICATION FACTORS APPLIED:

LOW HUMAN OCCUPANCY FARM BUILDINGS (1.25),
 SNOW LOAD DURATION (1.15), LOAD-SHARING SYSTEMS (1.10). FOR TRUSSES GREATER THAN 40" O.C. THE LOAD-SHARING FACTOR IS NOT APPLIED.



TOTAL ALLOWABLE ROOF LOADS FOR DIFFERENT TRUSS SPACINGS

TRUSS SPACING	24"	32"	48"	36"
TOTAL ROOF LOAD (PSF)	110	82	55	25



TRUSS MEMBER FORCES AND MOMENTS

MEMBER	FORCE (LB)	MOMENT (LB IN)	M/SF + D/P/C
AD	-12529	35822	1.00
DE	-11126	35822	.95
AB	11887		.81
BB	8250		.56
DB	-2663		.60
BE	3260		.60

SYN REVISIONS CHECKED DATE APPROVED

CANADA FARM BUILDING PLAN SERVICE

50'-0" TRUSS - 4'-0" PITCH
 TOTAL ROOF LOAD 55 PSF

DESIGNED BY H. JACKSON DATE JUNE 1/76 PLAN
 DRAWN BY R. HARBOUR REVISED C-134
 TRACED SCALE AS SHOWN SHEET 1 OF 1
 CHECKED H.A.J.