

1. ELEVATION OF TRUSS
2. GUSSET CUTTING DETAIL
3. JOINT 'B' NAILING DETAIL (LEFT)
4. JOINT 'C' NAILING DETAIL
- 5.
6. JOINT 'A' NAILING DETAIL
7. NOTATION AND LOADING DIAGRAM
8. 1/2" PLYWOOD GUSSETS (BOTH SIDES) AT ALL JOINTS
9. 2" X 10" TOP CHORD
10. BOTTOM CHORD SHOULD BE CAMBERED 1" AT CENTER
11. 2" X 4" WEB MEMBER 3' - 5" LENGTH
12. 2" X 4" WEB MEMBER 8' - 0" LENGTH
13. 2" X 6" BOTTOM CHORD
14. 2" X 4" WOOD BLOCKING - CHAIN TO BE VERTICAL
15. ALL JOINTS MUST BUTT TIGHT. FIT MEMBERS FULL SCALE BEFORE CUTTING
16. [6] DENOTES NUMBER OF NAILS FROM EACH SIDE

**NOTES:**

FOR 2" X 4" MEMBERS USE CONSTRUCTION GRADE DOUGLAS FIR IN THE "LIGHT FRAMING" CATEGORY OR NO. 2 OR BETTER DOUGLAS FIR IN THE "STRUCTURAL FRAMING" CATEGORY.

FOR 2" X 6" OR WIDER MEMBERS USE NO. 2 OR BETTER DOUGLAS FIR.

PLYWOOD TO BE 1/2" SHEATHING GRADE DOUGLAS FIR.

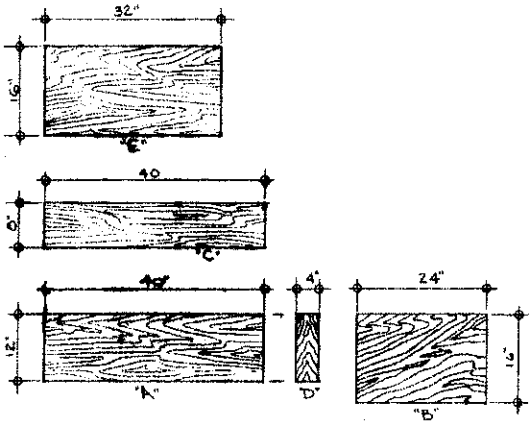
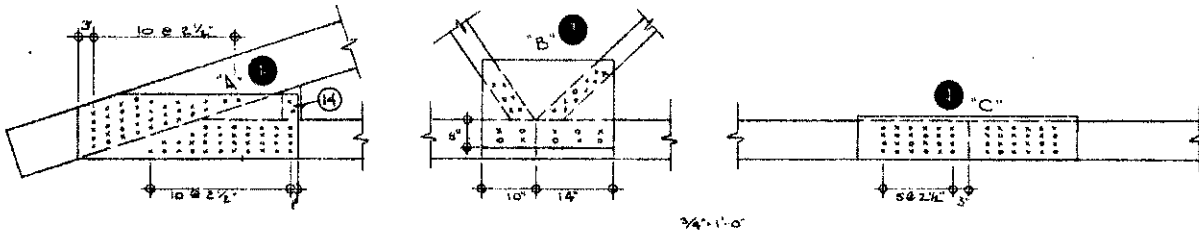
NAILS TO BE 2 1/2" NO. 5 GAUGE TRUSS GUSSET TYPE (BY THE STEEL COMPANY OF CANADA OR EQUIVALENT).

TOTAL ROOF LOAD IS LIVE LOAD PLUS DEAD LOAD. SEE TABLE 7-1, CANADIAN CODE FOR FARM BUILDINGS 1970, FOR FARM TRUSS ROOF CONSTRUCTION DEAD LOADS.

THE ALLOWABLE UNIT STRESSES FOR SAWN LUMBER AND PLYWOOD USED IN THIS TRUSS DESIGN ARE THOSE LISTED IN "THE CANADIAN STRUCTURAL DESIGN MANUAL 1970" WITH THE FOLLOWING MODIFICATION FACTORS APPLIED:

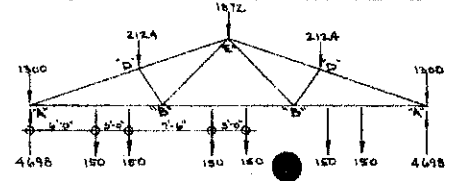
LOW HUMAN OCCUPANCY FARM BUILDINGS (1.25), SNOW LOAD DURATION (1.15), LOAD-SHARING SYSTEMS (1.10). FOR TRUSSES GREATER THAN 48" O.C. THE LOAD-SHARING FACTOR IS NOT APPLIED.

THE 150 LB. LOADS ON THE BOTTOM CHORD ARE FOR 3 ROWS OF FULL STAIR STEP DOUBLE DECK SUSPENDED CAGES (75 LB./FT. OF CAGE ROW)



**TOTAL ALLOWABLE ROOF LOADS FOR DIFFERENT TRUSS SPACINGS**

TRUSS SPACING	24"	32"	40"	48"
TOTAL ROOF LOAD (PSF)	118	88	59	26



**TRUSS MEMBER FORCES AND MOMENTS**

MEMBER	FORCE (LB)	MOMENT (LB.IN)	M/SF + P/AC
AD	-10745	19920	.92
DE	-9661	19920	.87
LB	10193	8100	1.00
BB	7047	8100	.78
DB	-2057		.24
BE	2995		.66

SYM	REVISIONS	CHECKED	DATE	APPROVED
<b>CANADA FARM BUILDING PLAN SERVICE</b>				
36'-0" SUSPENDED GAGE TRUSS - 4'-0" O.C. TOTAL ROOF LOAD 89 PSF				
DESIGNED BY: H.A.J.	DATE: JUL 27/78	REVISION	<b>PLAN c-102</b>	
DRAWN BY: D.P. HARRIS	SCALE: AS SHOWN	CHECKED: H.A.J.	SHEET 1 OF 1	