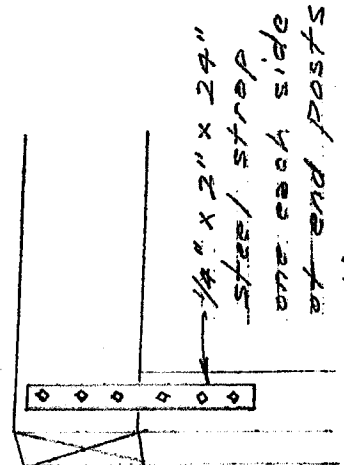
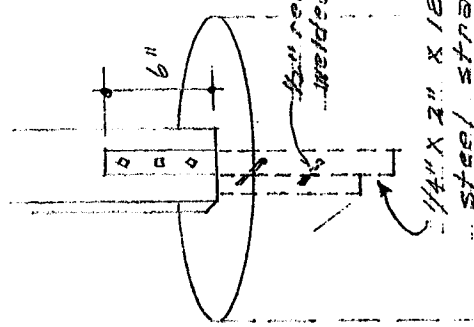


post & beam connector

post & pier connector

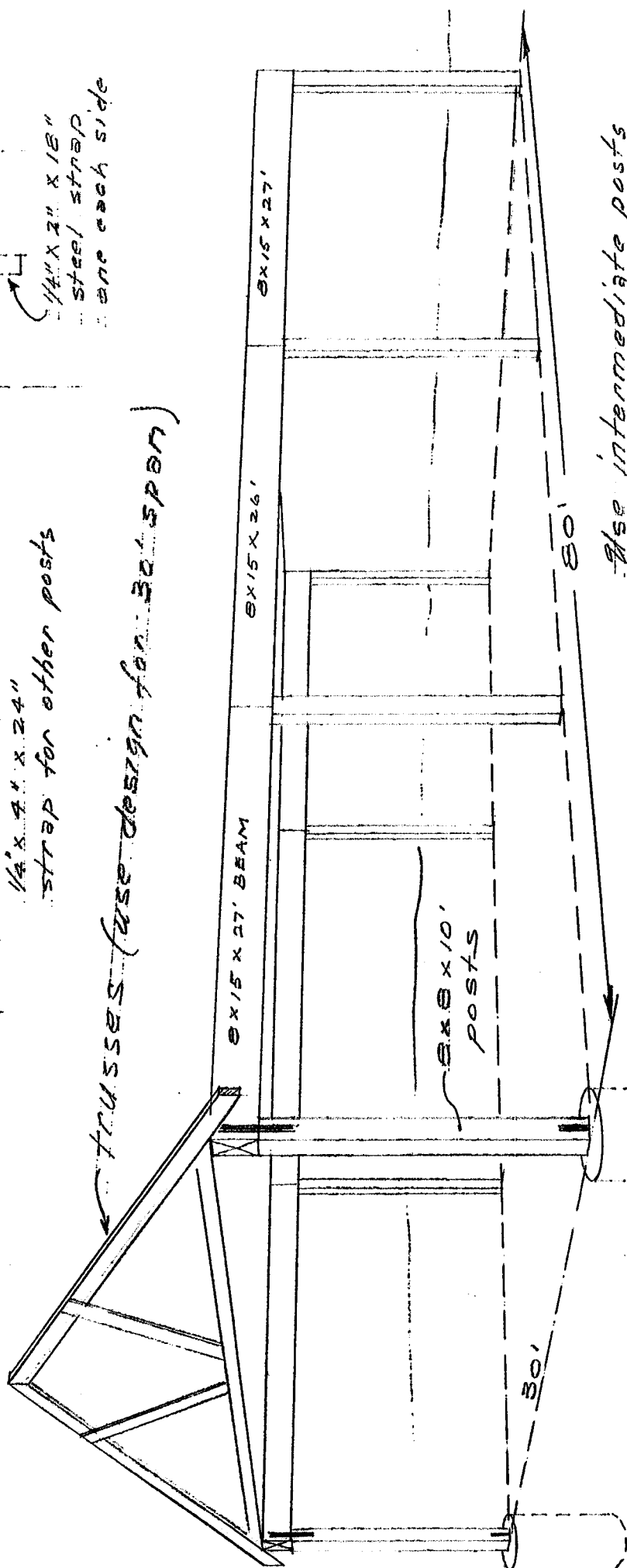


1/4" x 2" x 24"
 steel strap
 one each side
 at end posts
 1/4" x 4" x 24"
 strap for other posts



6"
 1/4" x 2" x 18"
 steel strap
 one each side
 1/2" reinf. rods
 welded to strap

trusses (use design for 30' span)



Use intermediate posts
 as needed to fill in walls

18" x 24" conc. piers
 under each post

POST-BEAM ROOF SUPPORT
 SYSTEM, 30' x 80'
 NDSU EXT. AGRIC. ENGINEERING
 1970 RC
 N.D. 708-3-1