

BIN CAPACITY - 280 CU. FT. PER 4' SECTION
ABOUT 10 TONS OF 70 PCF FERTILIZER
 The bin is designed to hold 70 pcf material and

resist a 20 psf wind when built as shown. If a unit less than 16' long is built, additional wind braces will be needed. Increasing the clearance under the bin will require more braces for the legs.

The interior partitions 4' o.c. are an important structural part of the bin and must be built as shown. The partition acts as a beam spanning from post to post.

MATERIAL LIST: OVERHEAD FERTILIZER BIN
 End Nails (Quantities will build both)

Item and Use	Pieces	Size	Length	FBM
LUMBER: Construction Grade Douglas Fir or No. 1 Southern Pine				
Legs - Preservative treated	4	2x8	18'	96
8 PCF Retention, Penta or Creosote	2	1x8	8'	11
Cross Framing	2	2x6	17'	24
	2	2x6	14'	28
Studs	2	2x4	8'	11
Diagonal Braces	4	2x6	12'	48
Partition	2	2x4	24'	11
Base	2	2x4	18'	24

PLYWOOD: Exterior-type (EXT-DFPA) C-C, B-C, or A-C Grade, Southern pine, Western Larch or Douglas fir

Gussets	2	1/2"	4x8	64
Siding	4	3/4"	4x8	128

HANDMADE: Corrosion Resistant (stainless steel)

Nails	20	20d		
	3	16d		
	3	8d		

4' BAY

Item and Use	Pieces	Size	Length	FBM
LUMBER: Construction Grade Douglas Fir or No. 1 Southern Pine				
Legs - Preservative treated, 8 PCF Retention Penta or Creosote	4	2x8	13'	96
Cross Framing	2	1x8	8'	11
	2	2x6	12'	24
	2	2x6	14'	28
Studs	4	2x4	12'	48
Diagonal Braces	4	2x6	12'	48
Partition Joist cover	2	2x4	18'	11
Plates	2	2x4	8'	16
Joints	2	2x6	8'	11
Beef postline	8	2x4	8'	64
Beef postline	1	2x8	8'	11
Beef postline	3	2x4	18'	24
Beef postline	1	1x2	16'	3
Cross braces	2	2x4	8'	11
Leg braces diagonal	2	2x4	10'	14
Leg braces longitudinal	1	2x4	8'	6
Draw off	1	2x4	10'	7

PLYWOOD: Exterior-type (EXT-DFPA) C-C, B-C, or A-C Grade, Southern pine, Western Larch or Douglas fir

Gusset Floor	4	1/2"	4x8	128
Partition Draw off slides	4	3/4"	4x8	128
Roof and hatch cover	2x	3/8"	4x8	48

HANDMADE: Corrosion Resistant (stainless steel)

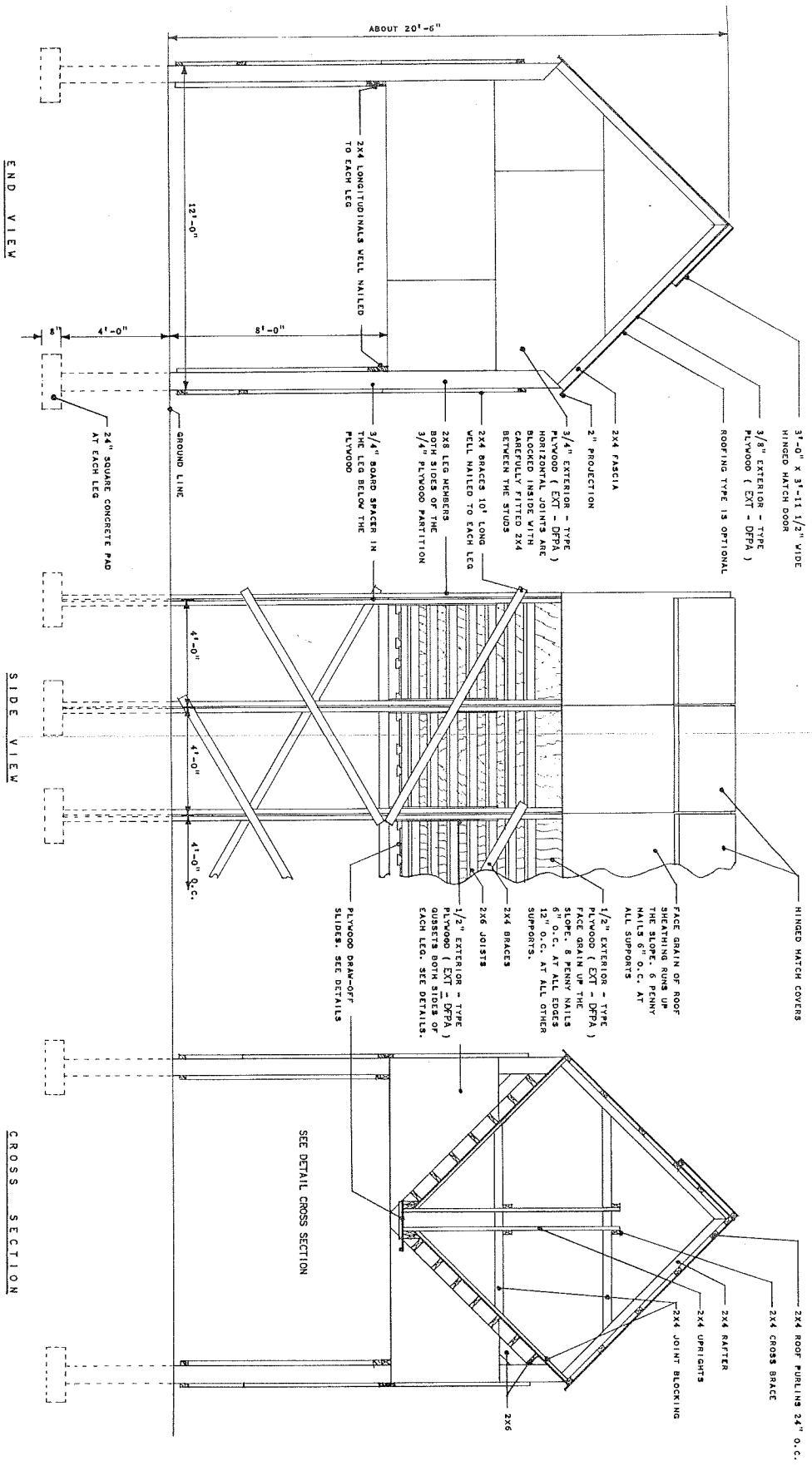
Nails	20	20d		
	5	16d		
	3	8d		
Leg screws	10	1 1/2"	5"	
Hinges	2	but	4"	
Roofing		3/4 sq.		

This design is based on the use of Exterior-type Douglas Fir, Western Larch or Southern Pine plywood bearing the EXT-DFPA grade-trademark of the American Plywood Association on each panel. Grade C-C is generally recommended for service and economy, but B-C or A-C are alternates, except as noted. Structural deficiencies may result with substitution of materials.

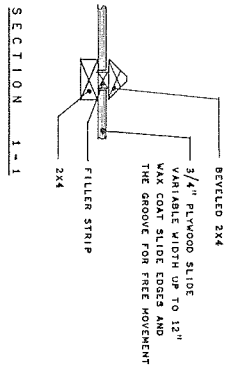
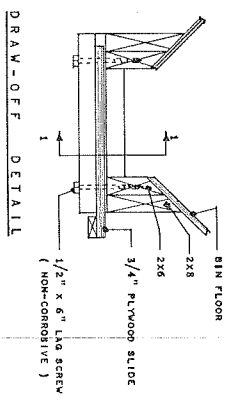
Because erection of the structure cannot be supervised by the designers, no liability can be assumed by either the designers or the American Plywood Association.

OVERHEAD FERTILIZER BIN

Developed by the American Plywood Association

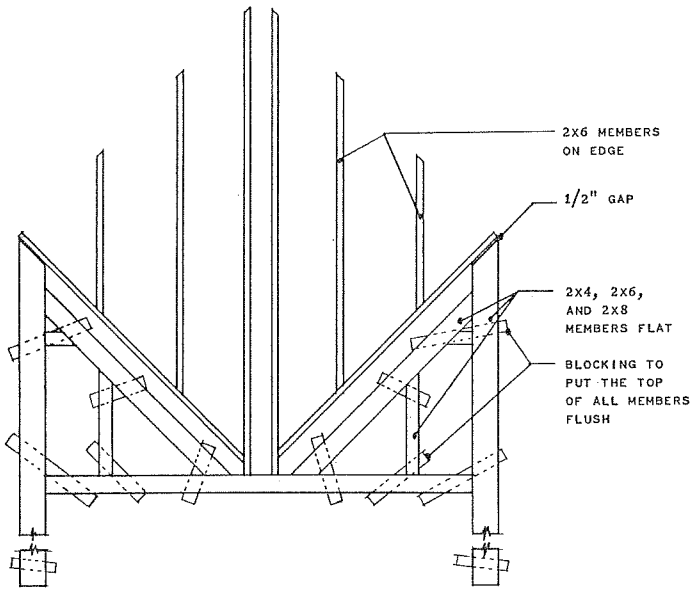


- NOTES:**
1. All plywood is Exterior-type (EXT-DFPA). Use A-C Grade for the sloping floor and C-C, B-C, or A-C Grades for other uses.
 2. All lumber is Construction Grade Douglas Fir, No. 1 Southern Pine, Western Larch or equivalent.
 3. Leg members are preservative treated with creosote or pent. Minimum retention 8 lb. per cu. ft.
 4. All nails are galvanized common unless otherwise noted.

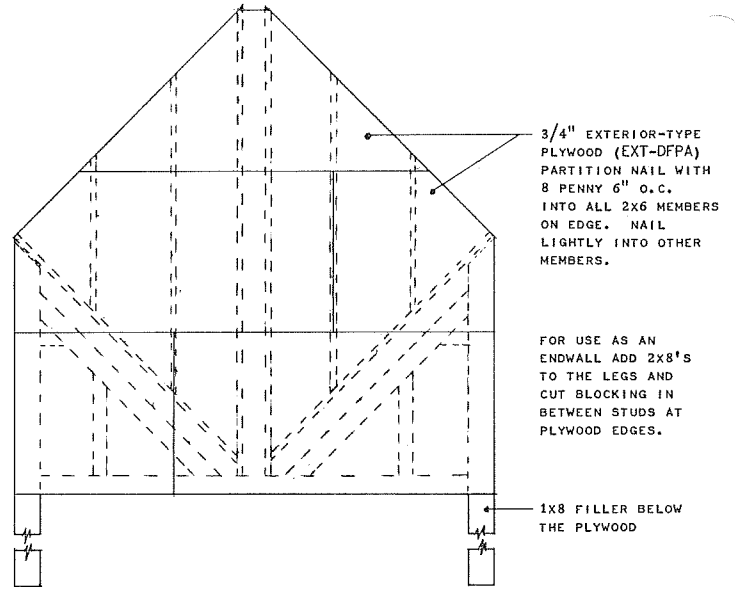


SEE DETAIL CROSS SECTION

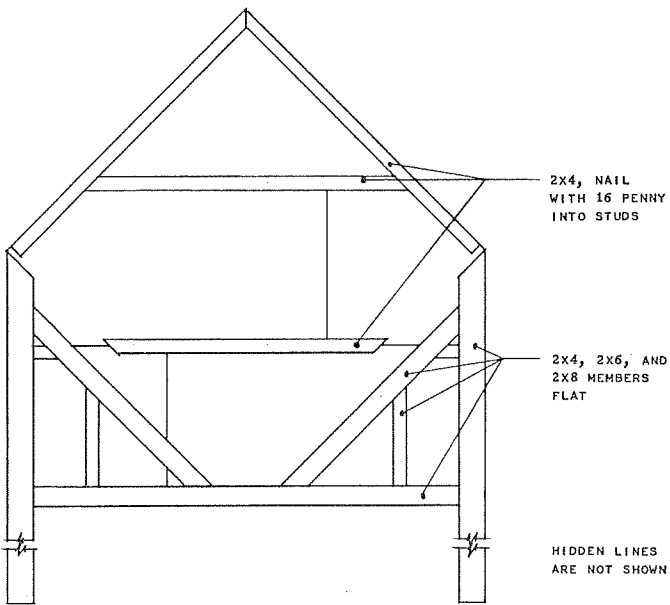
FABRICATION OF INTERIOR PARTITION OR END UNITS



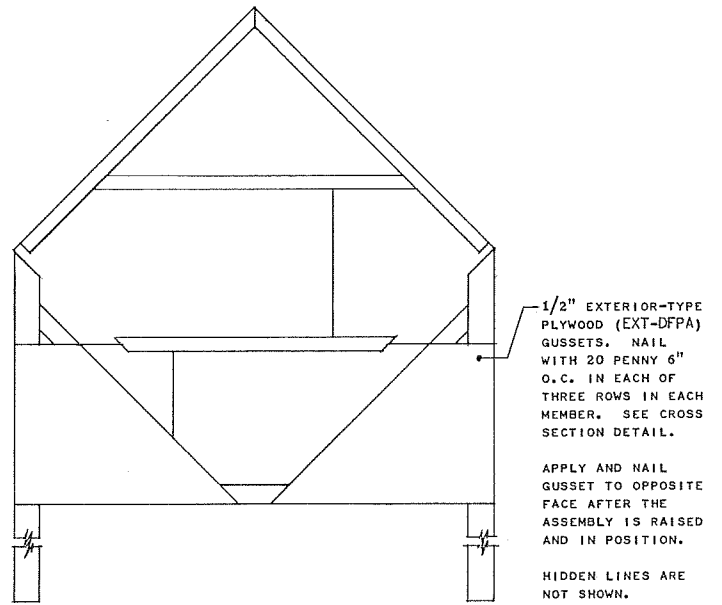
STEP 1



STEP 2



STEP 3



STEP 4