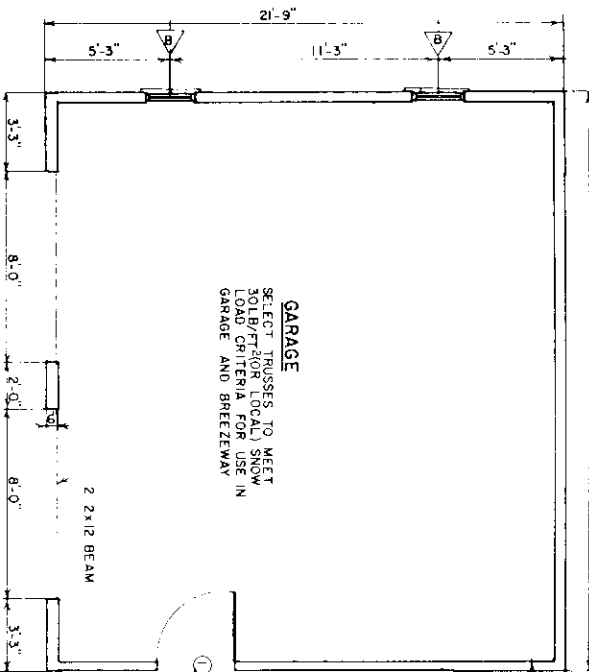
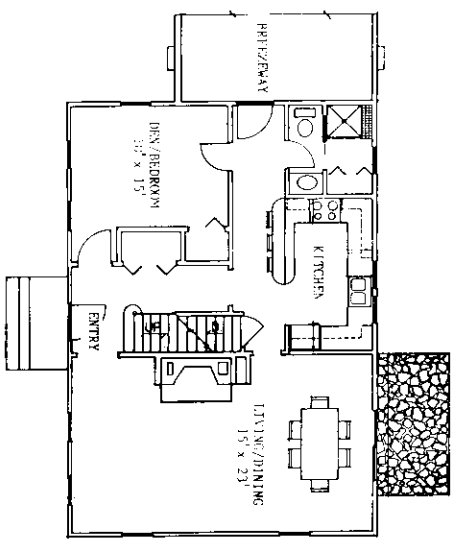
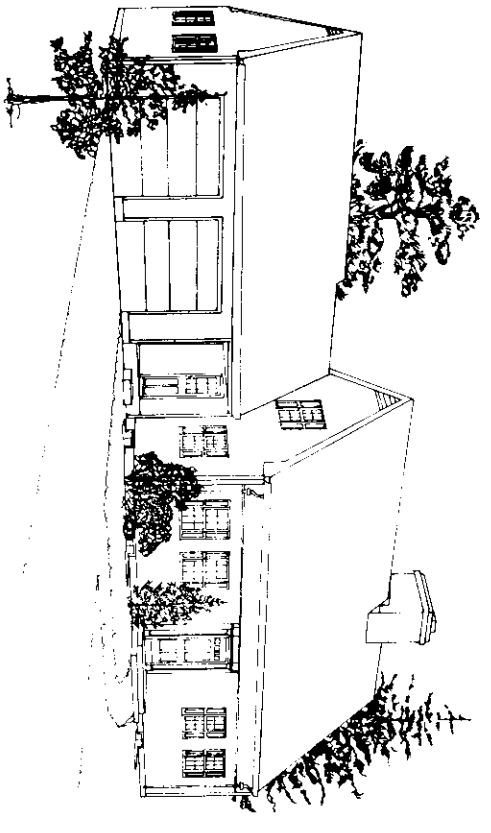
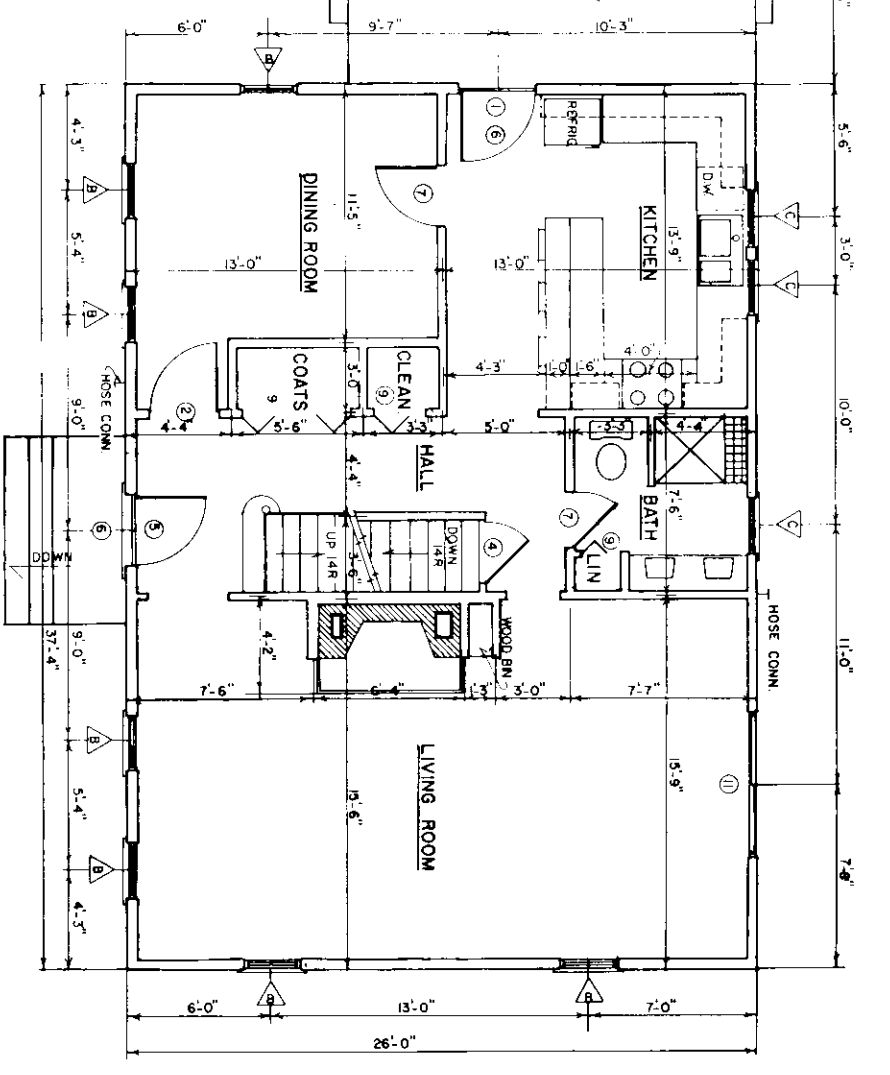


24'-6"



FIRST FLOOR PLAN

1/2" = 1'-0"
1924 SQ FT HEATED AREA



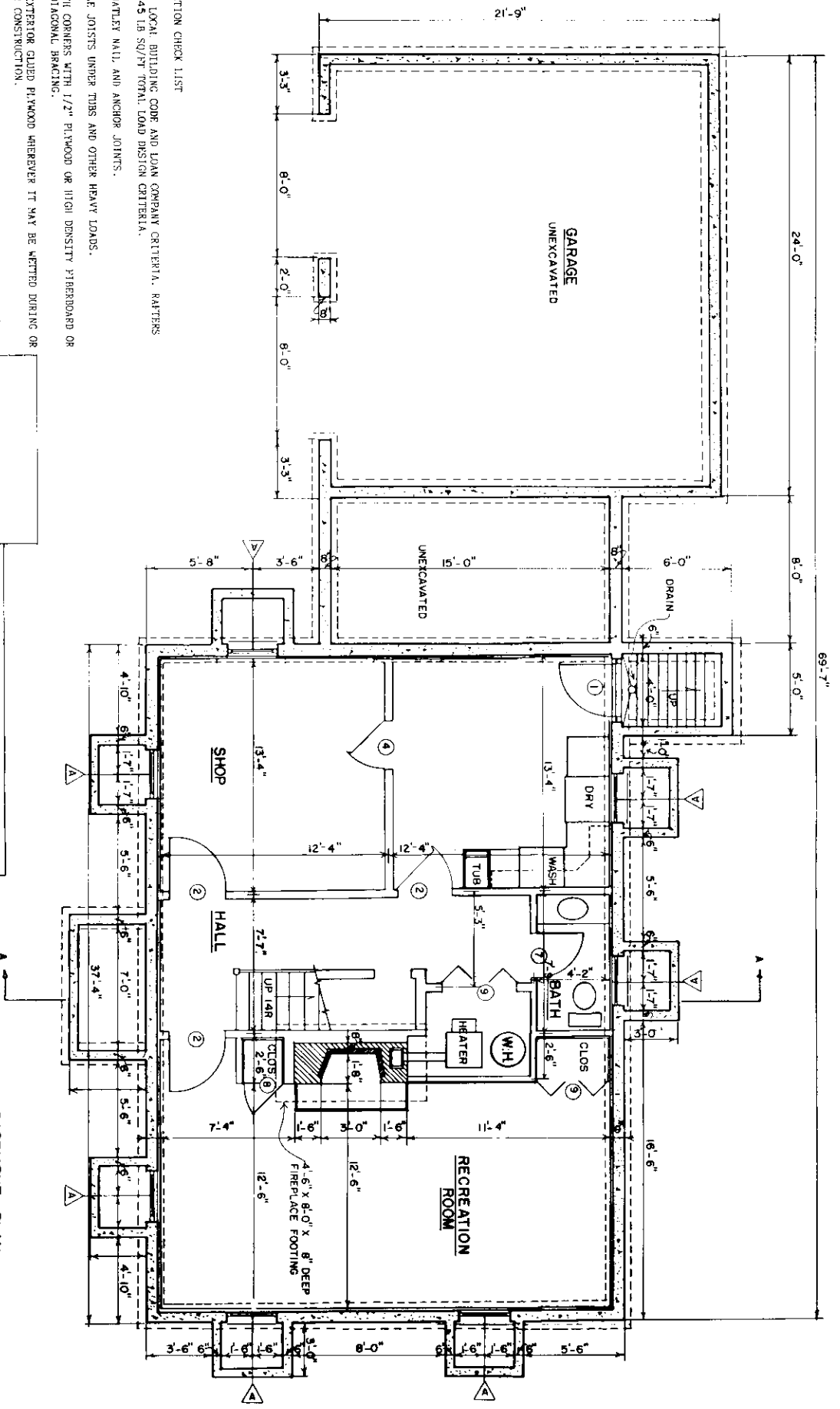
COOPERATIVE EXTENSION SERVICE
AGRICULTURE AND HOME ECONOMICS

UNITED STATES DEPARTMENT OF AGRICULTURE COOPERATING

3 - BEDROOM 1 1/2 STORY FARMHOUSE

USDA 65 7179 SHEET 1 OF 4

REV 86



CONSTRUCTION CHECK LIST

1. CHECK LOCAL BUILDING CODE AND LOAN COMPANY CRITERIA. RAFTERS MEET 45 LB. SQ/FT TOTAL LOAD DESIGN CRITERIA.
2. ADEQUATELY NAIL AND ANCHOR JOISTS.
3. DOUBLE JOISTS UNDER TUBS AND OTHER HEAVY LOADS.
4. SHEATH CORNERS WITH 1/2" PLYWOOD OR HIGH DENSITY FIBERBOARD OR USE DIAGONAL BRACING.
5. USE EXTERIOR GRADED PLYWOOD WHEREVER IT MAY BE WETTED DURING OR AFTER CONSTRUCTION.
6. PRESSURE TREAT ALL WOOD WITH GROUND CONTACT AND PROVIDE OTHER NEEDED TERMITICIDE CONTROL.
7. R. VALUES DEPEND ON LOCAL CLIMATE AND FUEL COSTS.
8. PROVIDE 1 SQ FT OF ATTIC VENT OPENINGS FOR EACH 150 SQ FT OF CEILING.
9. WEATHERIZE ALL OPENINGS AND JOINTS.

BASEMENT PLAN



ROOF PLAN (NOT TO SCALE)

COOPERATIVE EXTENSION SERVICE AGRICULTURE AND HOME ECONOMICS			
UNITED STATES DEPARTMENT OF AGRICULTURE COOPERATING			
3 - BEDROOM 1 1/2 STORY FARMHOUSE			
USDA 65	7179	SHEET 4 OF 4	
REV 96			