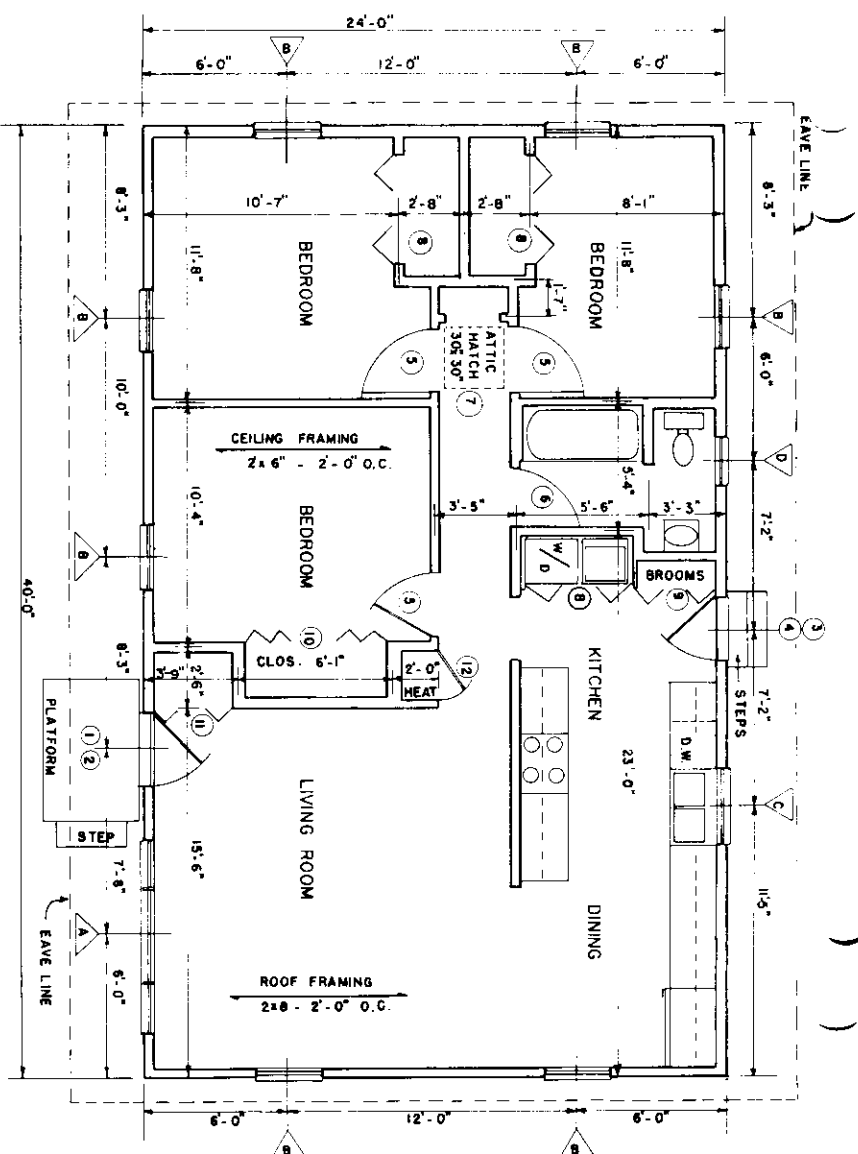


D O O R S C H E D U L E			
MARK	SIZE	DESCRIPTION	# REF.
1	3'-0" x 7'-0"	FLUSH PANEL - EXTERIOR-GLAZED	1
2	3'-0" x 7'-1"	SCREEN AND/OR STORM	1
3	2'-8" x 7'-0"	FLUSH PANEL - EXTERIOR-GLAZED	1
4	2'-8" x 7'-1"	SCREEN AND/OR STORM	1
5	2'-8" x 6'-8"	FLUSH PANEL - INTERIOR	3
6	2'-6" x 6'-8"	FLUSH PANEL - INTERIOR	1
7	30" x 30"	BUILT ON SITE	1
8	2'-3" x 6'-8"	WOOD BI-FOLD	6
9	1'-8" x 6'-8"	WOOD BI-FOLD	2
10	2'-10" x 6'-8"	WOOD BI-FOLD (4 PANELS)	2
11	1'-7" x 6'-8"	WOOD BI-FOLD	2
12	2'-0" x 6'-8"	FLUSH PANEL - INTERIOR	1

W I N D O W S C H E D U L E			
MARK	SIZE	DESCRIPTION	# REF.
A	2'-0" x 4'-6"	DOUBLE HUNG SASH W/ 4'-0" x 4'-6" PICTURE	2
B	2'-8" x 4'-6"	DOUBLE HUNG SASH	7
C	2'-8" x 3'-2"	DOUBLE HUNG SASH	1
D	2'-0" x 3'-2"	DOUBLE HUNG SASH	1

USE INSULATED GLASS



7169: (Rev 85) 3 Bedroom Farmhouse is a revision of a plan developed in 1964 for FmHA. The old versions should be removed from the Plan service. Closet space in two of the bedrooms was improved at a slight sacrifice of the bedroom sizes. The kitchen, dining and living room areas were opened to one another to encourage togetherness among family members. The kitchen cabinets and refrigerator were extended into the dining area--an arrangement that might be criticized for those interested in formal dining areas but afterall, this is an economy house of only 960 square feet floor area. **WARNING:** While writing this I note that corrections weren't made on the ceiling joists to allow for the broader expanse. The simplest solution is to recommend a truss. Otherwise a beam is needed between the dining living areas. The 2 x 6 ceiling joists should be no more than 16 inches on center (using top quality lumber), in which case the rafter should also be by 16" O.C. 2 x 8's 2 feet o.c. are borderline. We will correct the mistake and send new vellums. In the meantime, send advisory memos with this plan recommending a commercial truss and/or a design alternate. You could modify your vellum but changes would be needed on both sheets. Our revised version will specify a truss. Incidentally if there are any other changes that are needed, let us know.

1N

RIA ( RAFTERS MEET

960 SQ FT HEATED AREA

IBERBOARD OR USE DIAGONAL

TTED DURING OR AFTER

PROVIDE OTHER NEEDED

150 SQ FT OF CEILING.

COOPERATIVE EXTENSION SERVICE  
 AGRICULTURE AND HOME ECONOMICS  
 UNITED STATES DEPARTMENT OF AGRICULTURE COOPERATING  
 3-BEDROOM FARMHOUSE  
 USDA 64 7169 SHEET 1 OF 2  
 REV. 85

