

**BASMENT FLOOR PLAN**  
 DIMENSIONS 4' 8" FT TO FACE OF STUDS

**ELEVATION DETAILS OF RETAINING WALL**

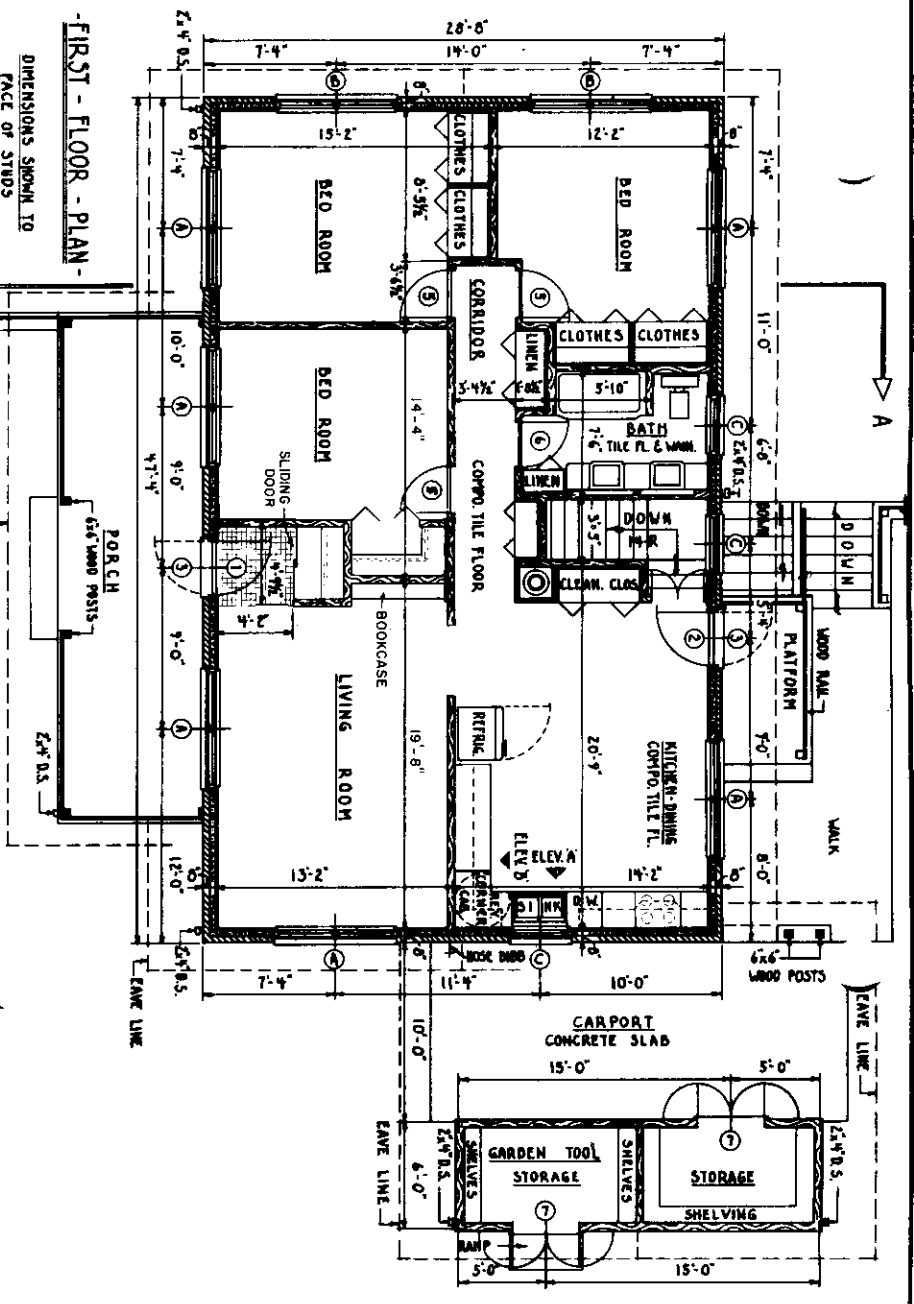
**TYPICAL WALL SECTION**

NOTE: - BASEMENT FLOOR - 4" CONC. SLAB ON 4" TAMPED SAND FILL - VAPOR BARRIER BETWEEN SLAB AND SAND FILL - 6" x 6" #10 GA. WELDED WIRE MESH REINFORCING.

COOPERATIVE EXTENSION WORK IN AGRICULTURE AND HOME ECONOMICS  
 DEPARTMENT OF AGRICULTURAL ENGINEERING  
 UNIVERSITY OF MARYLAND  
 AND  
 UNITED STATES DEPARTMENT OF AGRICULTURE COOPERATION

**4 BEDROOM FARMHOUSE**

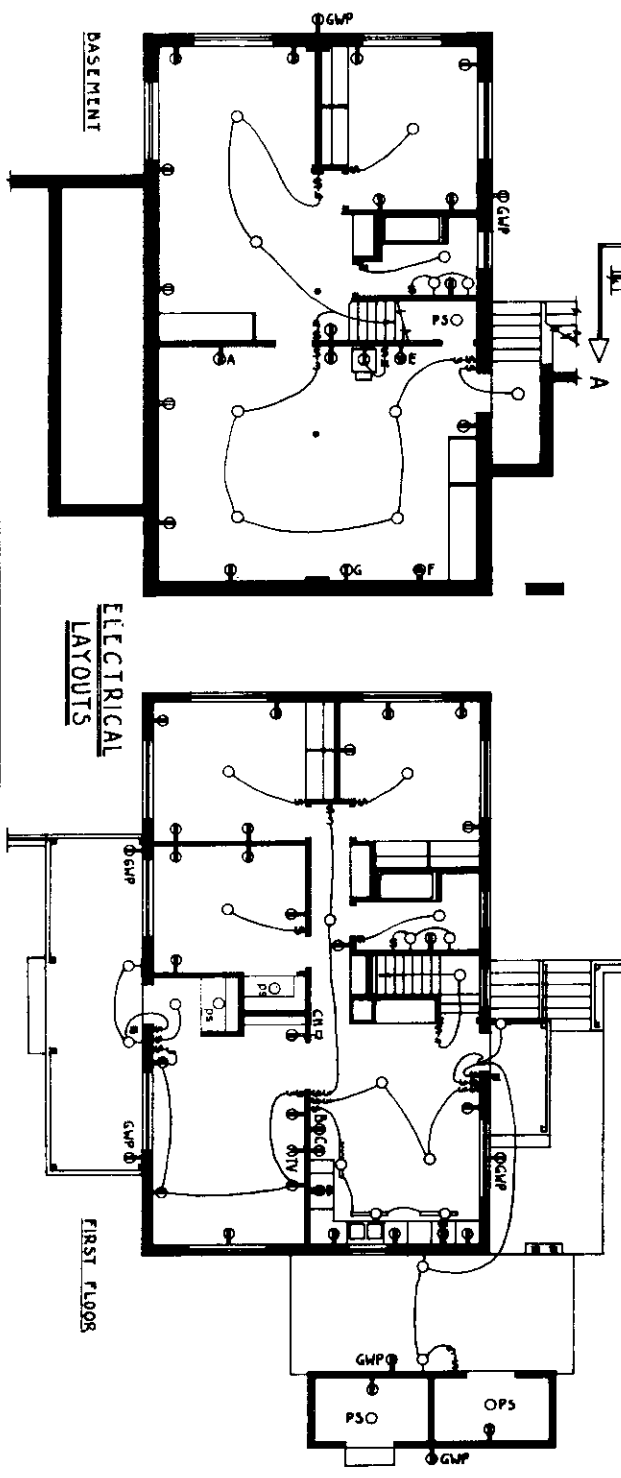
USDA - 1962 EX. 7151 SHEET 1 OF 3



DOOR - SCHEDULE		REMARKS
MARK	SIZE	
	W.D.	H.T.
1	3'-0" x 7'-0"	1 1/2" PLUSH PANEL - EXTERIOR - GLAZED
2	3'-0" x 7'-0"	1 1/2" SCREEN AND OR STORM
3	3'-0" x 7'-0"	1 1/2" SCREEN AND OR STORM
4	3'-0" x 6'-0"	1 1/2" PLUSH PANEL - INTERIOR
5	2'-0" x 6'-0"	1 1/2" PLUSH PANEL - INTERIOR
6	2'-0" x 6'-0"	1 1/2" PLUSH PANEL - INTERIOR
7	2'-0" x 6'-0"	1 1/2" PLUSH PANEL - INTERIOR
CLOSET DOORS ARE SHOWN AS FOLDING LOUVERED OF VARIOUS WIDTHS. - ALSO DOORS AT HEAD OF STAIRS.		
WINDOW - SCHEDULE		
MARK	ALUMINUM	SIZE
	D.N.	SASH
A	2	3'-4" x 4'-0"
B	2	3'-4" x 3'-0"
C	1	3'-4" x 3'-0"
D	1	3'-4" x 2'-0"
E	2	3'-4" x 2'-0"
WINDOWS TO INCLUDE SCREENS AND STORM SASH.		

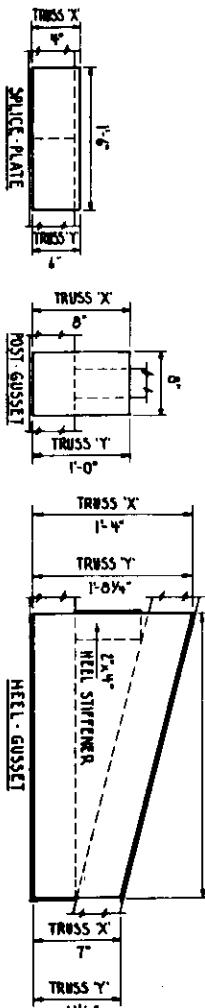
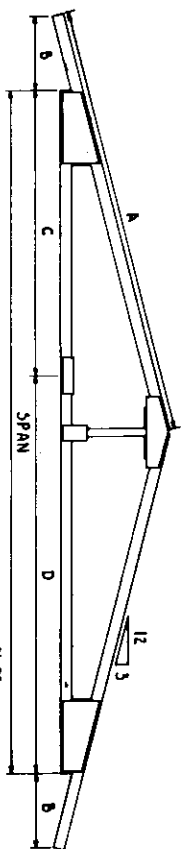
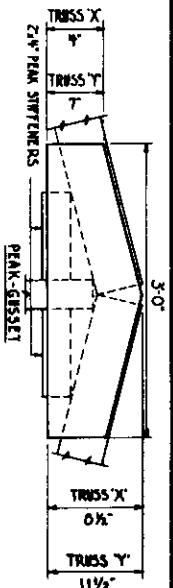
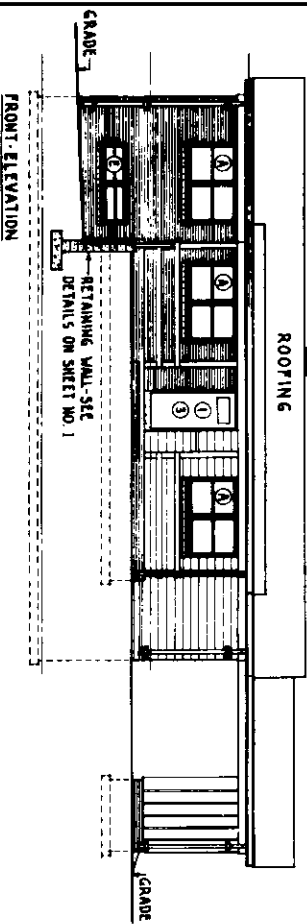
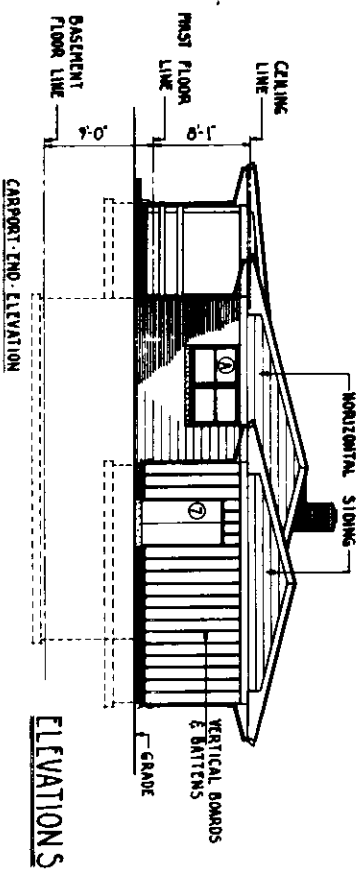
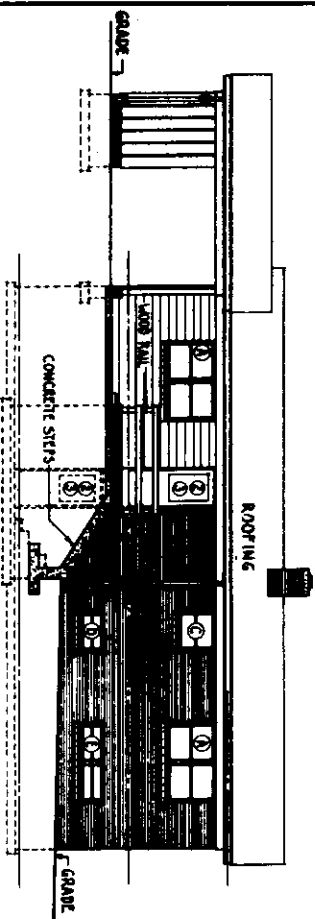
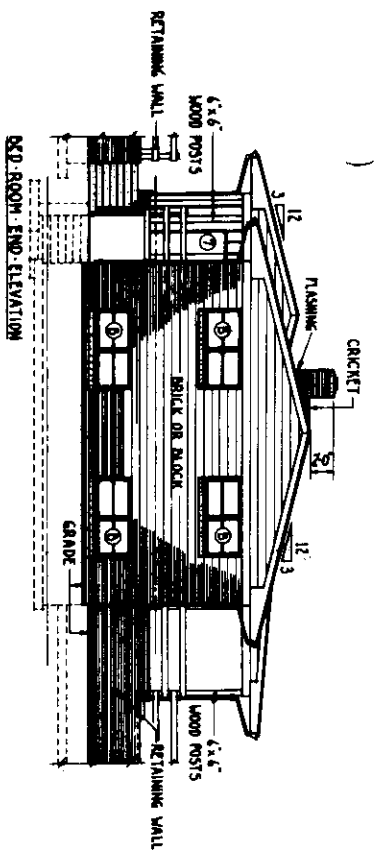
**-FIRST FLOOR - PLAN-**

DIMENSIONS SHOWN TO FACE OF STUDS



ELECTRICAL - KEY	
○	CEILING OUTLET
○	WALL OUTLET
○	WIREX CONVENIENCE OUTLET
○	SPRING-RETURNED OUTLET-3 WIRE
○	A FREEZER OUTLET
○	B REFRIGERATOR OUTLET
○	C CLOCK OUTLET
○	D WALL OVEN & COOKING SURFACE OUTLETS
○	E WATER HEATER OUTLET
○	F DRYER OUTLET
○	G WASHER OUTLET
○	H SWITCH AND OUTLET FOR HEATER
○	I GROUND LEAKAGE PROOF OUTLET
○	OPS WALL SWITCH
○	TV TELEVISION OUTLET
○	FLUORESCENT OUTLET
○	PUSH BUTTON
○	CH CH DIMMS

UNITED STATES DEPARTMENT OF AGRICULTURE COOPERATIVE  
 COOPERATIVE EXTENSION WORK IN  
 AGRICULTURE AND HOME ECONOMICS  
**4-BEDROOM FARMHOUSE**  
 USDA-1962 EX. 7151 SHEET 2 OF 3  
 REVISED 7/83



SPAN	CARPORY TRUSS X'	HOUSE TRUSS Y'
20'-0"	13'-5"	17'-10"
TOP CHORD	LENGTH - A 2'-4"	SIZE 1'-3"
OVERHANG - B 3'-0"	LENGTH 1'-3"	SIZE 1'-3"
MEMBER - C 2'-4"	LENGTH 6'-0"	SIZE 2'-4"
CUT-MEMBER - D 2'-4"	LENGTH 12'-0"	SIZE 2'-4"
POST	2'-4"	2'-4"

USE 3/4" UNSAWN PLYWOOD GUSSET AND SPLICE PLATES BOTH SIZES. BE SURE SURFACE GRAIN OF PLYWOOD RUNS PARALLEL TO BOTTOM CHORD OF TRUSS. MIX POWDERED GRADE # CASERIN GLUE OR PRELUM RES-ORINOL IN STRICT ACCORDANCE WITH MANUFACTURERS INSTRUCTIONS. USE #4 NAILS OR 1 1/2" STAPLES FOR NAILING GUSSETS AND SPLICE PLATES. SPACE 1/4" APART AND 3/4" FROM EDGES OF PLYWOOD. IF AVAILABLE, USE COMMERCIAL TRUSSES OF SIMILAR SHAPE AS APPROVED BY LOCAL BUILDING CODES. THIS TRUSS DESIGN DATA IS BASED ON INFORMATION PROVIDED BY THE UNIVERSITY OF ILLINOIS SMALL HOMES COUNCIL.

ENERGY CONSERVATION NOTES:  
 THIS PLAN COULD BE MADE MORE ENERGY CONSERVATIVE BY INCREASING THE INSULATION IN THE CEILING TO R-28 (EQUIVALENT TO 8" OF FIBERGLASS). USING 1/2" OF POLYSTYRENE, R VALUE OF WALL SHOWN WOULD BE 8. ANOTHER 1/2" OF POLYSTYRENE WOULD PROVIDE TOTAL R OF ABOUT 14 (APPROXIMATELY EQUAL TO A WELL INSULATED WOOD FRAME WALL). EXTRUDED POLYSTYRENE CAN ALSO SERVE AS A VAPOR BARRIER, BUT SHOULD BE COVERED WITH A FIRE RESISTANT MATERIAL SUCH AS PLASTERBOARD. TO IMPROVE INSULATION IN EXTERIOR WALLS, USE A SUFFICIENTLY THICK RIGID, BOARD-TYPE INSULATION BETWEEN INTERIOR AND EXTERIOR WALLS OF FIRST FLOOR. THICKNESS BASED ON LOCAL CLIMATE CONDITIONS.

COOPERATIVE EXTENSION WORK IN  
 AGRICULTURE AND HOME ECONOMICS

UNITED STATES DEPARTMENT OF AGRICULTURE, COOPERATING

4 BEDROOM FARMHOUSE

USDA-1968 EA. 7151 SHEET 3 OF 3  
 REVISED 7/83