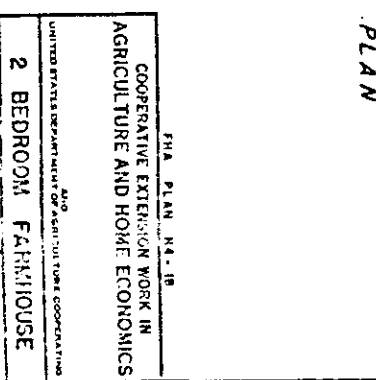
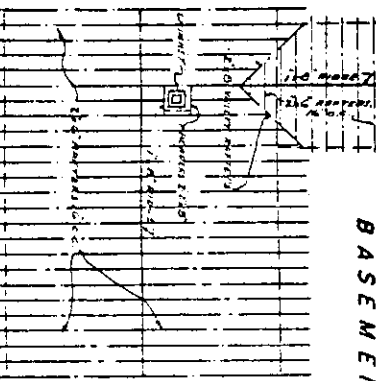
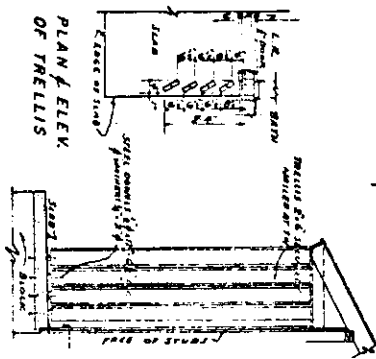
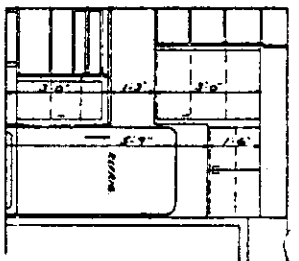
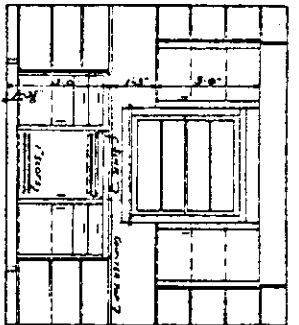
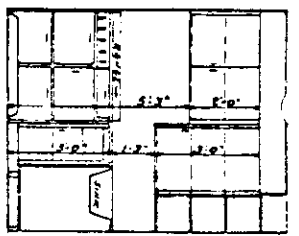


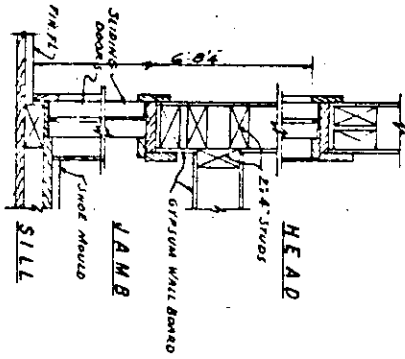
DOOR SCHEDULE		WINDOW SCHEDULE	
NO.	SIZE	NO.	SIZE
1	3'-0" x 6'-1/2"	1	5'-6" x 6'-0"
2	2'-0" x 6'-1/2"	2	2'-0" x 6'-1/2"
3	2'-6" x 6'-1/2"	3	2'-0" x 6'-1/2"
4	2'-6" x 6'-1/2"	4	2'-0" x 6'-1/2"
5	2'-6" x 6'-1/2"	5	2'-0" x 6'-1/2"
6	2'-6" x 6'-1/2"	6	2'-0" x 6'-1/2"
7	2'-6" x 6'-1/2"	7	2'-0" x 6'-1/2"
8	2'-6" x 6'-1/2"	8	2'-0" x 6'-1/2"
9	2'-6" x 6'-1/2"	9	2'-0" x 6'-1/2"
10	2'-6" x 6'-1/2"	10	2'-0" x 6'-1/2"
11	2'-6" x 6'-1/2"	11	2'-0" x 6'-1/2"
12	2'-6" x 6'-1/2"	12	2'-0" x 6'-1/2"
13	2'-6" x 6'-1/2"	13	2'-0" x 6'-1/2"
14	2'-6" x 6'-1/2"	14	2'-0" x 6'-1/2"
15	2'-6" x 6'-1/2"	15	2'-0" x 6'-1/2"
16	2'-6" x 6'-1/2"	16	2'-0" x 6'-1/2"
17	2'-6" x 6'-1/2"	17	2'-0" x 6'-1/2"
18	2'-6" x 6'-1/2"	18	2'-0" x 6'-1/2"
19	2'-6" x 6'-1/2"	19	2'-0" x 6'-1/2"
20	2'-6" x 6'-1/2"	20	2'-0" x 6'-1/2"
21	2'-6" x 6'-1/2"	21	2'-0" x 6'-1/2"
22	2'-6" x 6'-1/2"	22	2'-0" x 6'-1/2"
23	2'-6" x 6'-1/2"	23	2'-0" x 6'-1/2"
24	2'-6" x 6'-1/2"	24	2'-0" x 6'-1/2"
25	2'-6" x 6'-1/2"	25	2'-0" x 6'-1/2"
26	2'-6" x 6'-1/2"	26	2'-0" x 6'-1/2"
27	2'-6" x 6'-1/2"	27	2'-0" x 6'-1/2"
28	2'-6" x 6'-1/2"	28	2'-0" x 6'-1/2"
29	2'-6" x 6'-1/2"	29	2'-0" x 6'-1/2"
30	2'-6" x 6'-1/2"	30	2'-0" x 6'-1/2"
31	2'-6" x 6'-1/2"	31	2'-0" x 6'-1/2"
32	2'-6" x 6'-1/2"	32	2'-0" x 6'-1/2"
33	2'-6" x 6'-1/2"	33	2'-0" x 6'-1/2"
34	2'-6" x 6'-1/2"	34	2'-0" x 6'-1/2"
35	2'-6" x 6'-1/2"	35	2'-0" x 6'-1/2"
36	2'-6" x 6'-1/2"	36	2'-0" x 6'-1/2"
37	2'-6" x 6'-1/2"	37	2'-0" x 6'-1/2"
38	2'-6" x 6'-1/2"	38	2'-0" x 6'-1/2"
39	2'-6" x 6'-1/2"	39	2'-0" x 6'-1/2"
40	2'-6" x 6'-1/2"	40	2'-0" x 6'-1/2"
41	2'-6" x 6'-1/2"	41	2'-0" x 6'-1/2"
42	2'-6" x 6'-1/2"	42	2'-0" x 6'-1/2"
43	2'-6" x 6'-1/2"	43	2'-0" x 6'-1/2"
44	2'-6" x 6'-1/2"	44	2'-0" x 6'-1/2"
45	2'-6" x 6'-1/2"	45	2'-0" x 6'-1/2"
46	2'-6" x 6'-1/2"	46	2'-0" x 6'-1/2"
47	2'-6" x 6'-1/2"	47	2'-0" x 6'-1/2"
48	2'-6" x 6'-1/2"	48	2'-0" x 6'-1/2"
49	2'-6" x 6'-1/2"	49	2'-0" x 6'-1/2"
50	2'-6" x 6'-1/2"	50	2'-0" x 6'-1/2"
51	2'-6" x 6'-1/2"	51	2'-0" x 6'-1/2"
52	2'-6" x 6'-1/2"	52	2'-0" x 6'-1/2"
53	2'-6" x 6'-1/2"	53	2'-0" x 6'-1/2"
54	2'-6" x 6'-1/2"	54	2'-0" x 6'-1/2"
55	2'-6" x 6'-1/2"	55	2'-0" x 6'-1/2"
56	2'-6" x 6'-1/2"	56	2'-0" x 6'-1/2"
57	2'-6" x 6'-1/2"	57	2'-0" x 6'-1/2"
58	2'-6" x 6'-1/2"	58	2'-0" x 6'-1/2"
59	2'-6" x 6'-1/2"	59	2'-0" x 6'-1/2"
60	2'-6" x 6'-1/2"	60	2'-0" x 6'-1/2"
61	2'-6" x 6'-1/2"	61	2'-0" x 6'-1/2"
62	2'-6" x 6'-1/2"	62	2'-0" x 6'-1/2"
63	2'-6" x 6'-1/2"	63	2'-0" x 6'-1/2"
64	2'-6" x 6'-1/2"	64	2'-0" x 6'-1/2"
65	2'-6" x 6'-1/2"	65	2'-0" x 6'-1/2"
66	2'-6" x 6'-1/2"	66	2'-0" x 6'-1/2"
67	2'-6" x 6'-1/2"	67	2'-0" x 6'-1/2"
68	2'-6" x 6'-1/2"	68	2'-0" x 6'-1/2"
69	2'-6" x 6'-1/2"	69	2'-0" x 6'-1/2"
70	2'-6" x 6'-1/2"	70	2'-0" x 6'-1/2"
71	2'-6" x 6'-1/2"	71	2'-0" x 6'-1/2"
72	2'-6" x 6'-1/2"	72	2'-0" x 6'-1/2"
73	2'-6" x 6'-1/2"	73	2'-0" x 6'-1/2"
74	2'-6" x 6'-1/2"	74	2'-0" x 6'-1/2"
75	2'-6" x 6'-1/2"	75	2'-0" x 6'-1/2"
76	2'-6" x 6'-1/2"	76	2'-0" x 6'-1/2"
77	2'-6" x 6'-1/2"	77	2'-0" x 6'-1/2"
78	2'-6" x 6'-1/2"	78	2'-0" x 6'-1/2"
79	2'-6" x 6'-1/2"	79	2'-0" x 6'-1/2"
80	2'-6" x 6'-1/2"	80	2'-0" x 6'-1/2"
81	2'-6" x 6'-1/2"	81	2'-0" x 6'-1/2"
82	2'-6" x 6'-1/2"	82	2'-0" x 6'-1/2"
83	2'-6" x 6'-1/2"	83	2'-0" x 6'-1/2"
84	2'-6" x 6'-1/2"	84	2'-0" x 6'-1/2"
85	2'-6" x 6'-1/2"	85	2'-0" x 6'-1/2"
86	2'-6" x 6'-1/2"	86	2'-0" x 6'-1/2"
87	2'-6" x 6'-1/2"	87	2'-0" x 6'-1/2"
88	2'-6" x 6'-1/2"	88	2'-0" x 6'-1/2"
89	2'-6" x 6'-1/2"	89	2'-0" x 6'-1/2"
90	2'-6" x 6'-1/2"	90	2'-0" x 6'-1/2"
91	2'-6" x 6'-1/2"	91	2'-0" x 6'-1/2"
92	2'-6" x 6'-1/2"	92	2'-0" x 6'-1/2"
93	2'-6" x 6'-1/2"	93	2'-0" x 6'-1/2"
94	2'-6" x 6'-1/2"	94	2'-0" x 6'-1/2"
95	2'-6" x 6'-1/2"	95	2'-0" x 6'-1/2"
96	2'-6" x 6'-1/2"	96	2'-0" x 6'-1/2"
97	2'-6" x 6'-1/2"	97	2'-0" x 6'-1/2"
98	2'-6" x 6'-1/2"	98	2'-0" x 6'-1/2"
99	2'-6" x 6'-1/2"	99	2'-0" x 6'-1/2"
100	2'-6" x 6'-1/2"	100	2'-0" x 6'-1/2"



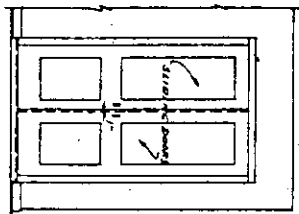
SHA PLAN NO. 18
 COOPERATIVE EXTENSION WORK IN
 AGRICULTURE AND HOME ECONOMICS
 UNITED STATES DEPARTMENT OF AGRICULTURE
 2 BEDROOM FARMHOUSE
 USDA - 52 EX. 7120 SHEET 1 OF 3



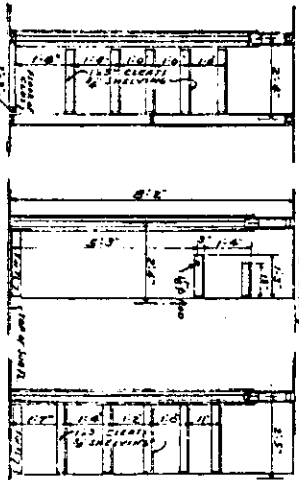
KITCHEN DETAILS



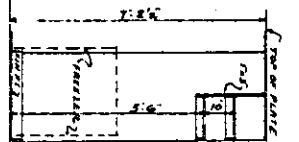
DETAIL OF SLIDING DOORS



ELEV. & SECT. OF FOOD STORAGE CLOSET

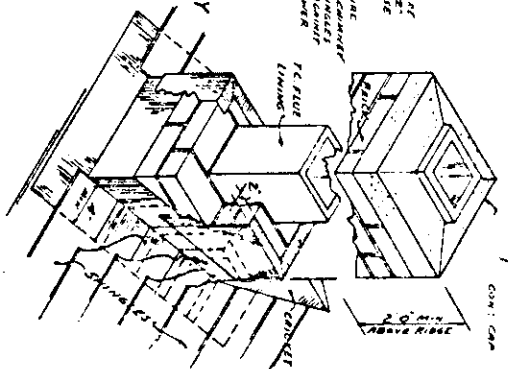


TYPICAL CLOSET

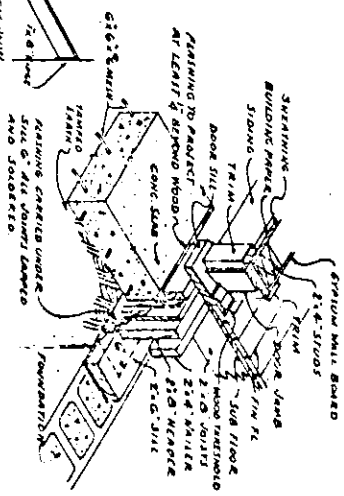


SHELVES OVER FREEZER

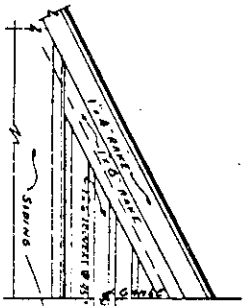
VIEW OF CHIMNEY SHOWING METHOD OF FLASHING



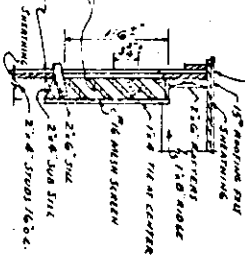
METAL COP FLASHING AROUND ENTIRE CHIMNEY. FLASHING TO BE IN OVERLAP AT JUNCTION AND EXTEND 2" OVER BASE FLASHING.
METAL DIRT FLASHING AROUND ENTIRE CHIMNEY. FLASHING ALONG RAISE OF CHIMNEY AT POINTS OF ENTRY AND EXITS. FLASHING TO BE IN OVERLAP AT JUNCTION AND EXTEND 2" OVER SIDE OF CHIMNEY TO EXTEND OVER FLASHING AND JOINTS.



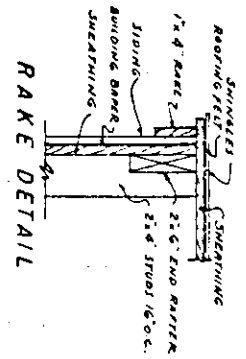
DETAIL OF METAL FLASHING BETWEEN WALL OF HOUSE & IRONPIPE STAB



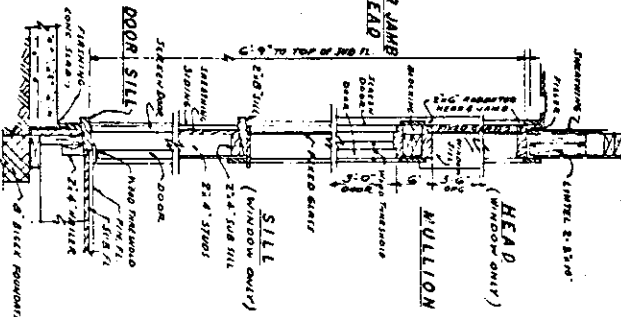
HALF ELEVATION LOUVER DETAILS



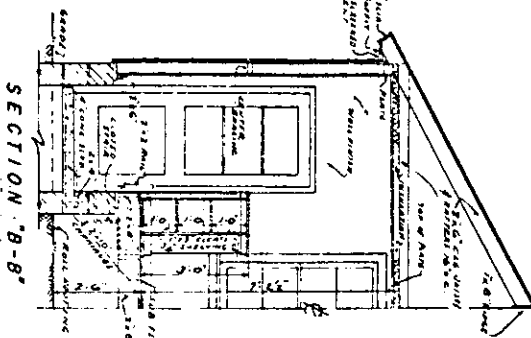
SECTION



RAKE DETAIL



DETAIL OF DOOR & WINDOW



SECTION 'B-B'