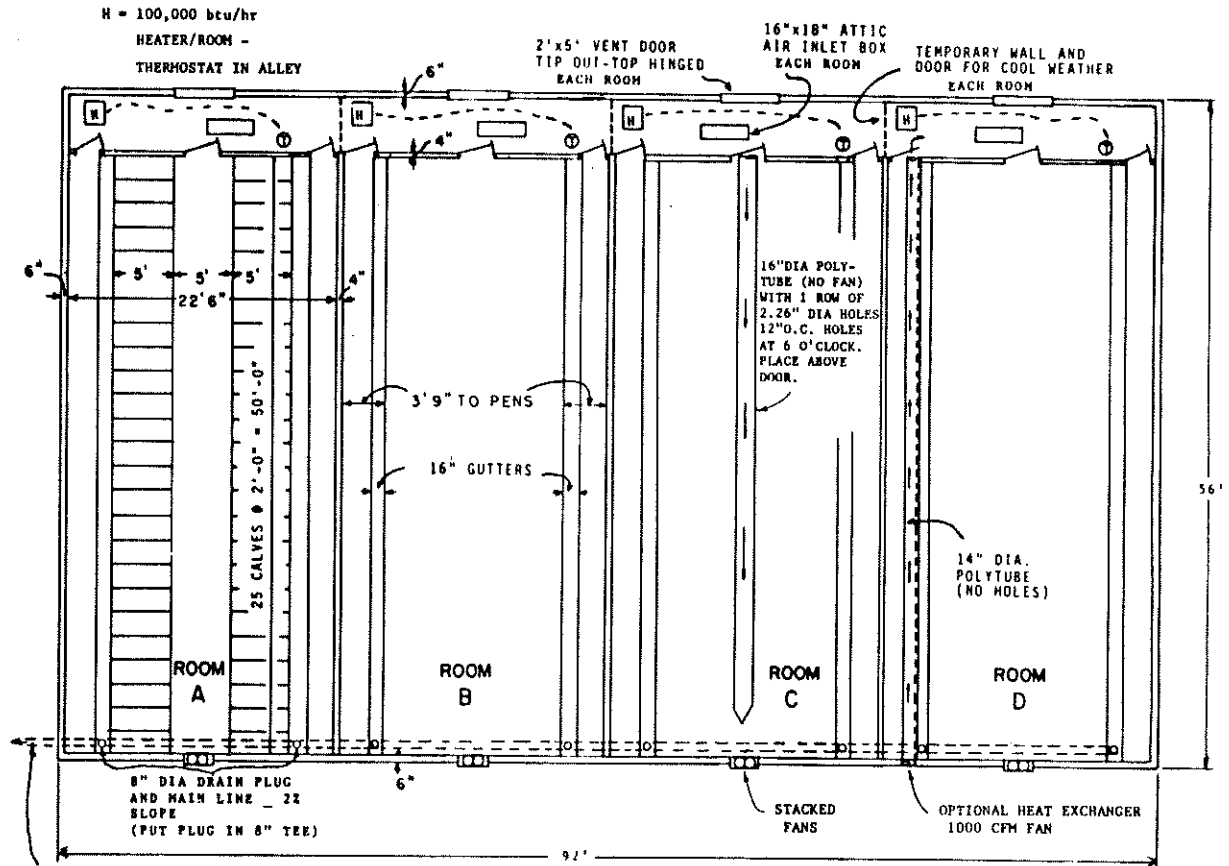
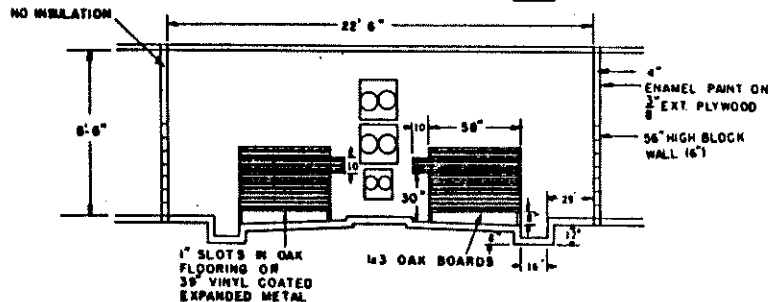
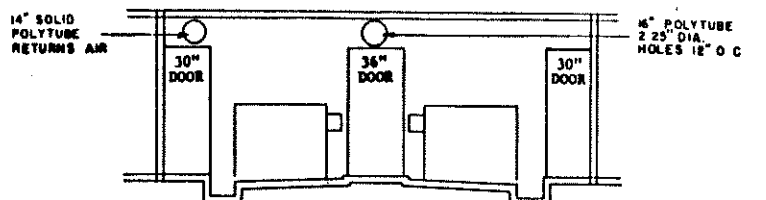


- 1 INSULATED SUMMER VENT DOOR 1- 2'x5' DOOR/EACH ROOM
- 2 HINGE
- 3 ATTIC AIR INLET  
1/4" SQUARE MESH.
- 4 3/8" EXTERIOR PLYWOOD OVER 4 MIL. PLASTIC
- 5 SERVICE ALLEY AIR INLET BOX (PLYWOOD FRAME)
- 6 EXTRUDED POLYSTYRENE BAFFLE 1"x16" BLUE STYROFOAM SELF ADJUSTING AIR INLET 48" LONG BETWEEN TRUSSES
- 7 8" FIBERGLASS INSULATION
- 8 2"x4" INNER STUD WALL.
- 9 4" INSULATED OUTER WALL
- 10 STEEL SIDING (HORIZONTAL)

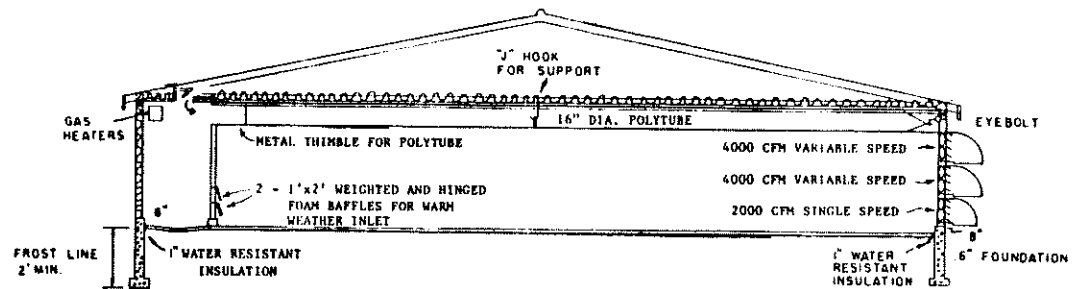


TO MANURE STORAGE  
(ALLOW 4-5 GAL/CALF/DAY)  
2% SLOPE

ROOM END AIR INLET DETAIL



ROOM END OUTER WALL DETAIL



NOTE: ALL ROOMS HAVE THE SAME FEATURES.  
FEATURES ARE EMPHASIZED AS FOLLOWS:

- ROOM A - PENS
- ROOM B - GUTTERS
- ROOM C - VENTILATION
- ROOM D - HEAT EXCHANGER

COOPERATIVE EXTENSION SERVICE  
AGRICULTURE AND HOME ECONOMICS

AND  
UNITED STATES DEPARTMENT OF AGRICULTURE COOPERATING

VEAL CALF BARN

PA '88 6412 SHEET | OF |