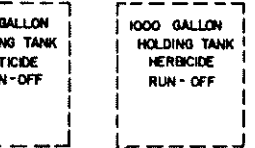
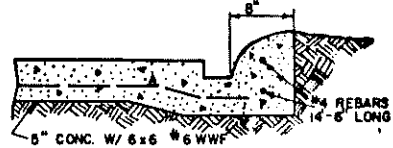


SECTION B-B
12' 9" 6" 3" 0" SCALE

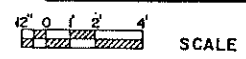


NOTE:
EXTRA TANKS (PERHAPS SMALLER) MIGHT BE CONSIDERED TO PERMIT SEGREGATION OF DRAIN WATER ACCORDING TO THE PESTICIDE EACH CONTAINS -- AN IMPORTANT ISSUE IF RECYCLING THE WASTE PESTICIDE IN ACCORDANCE WITH LABEL INSTRUCTIONS.

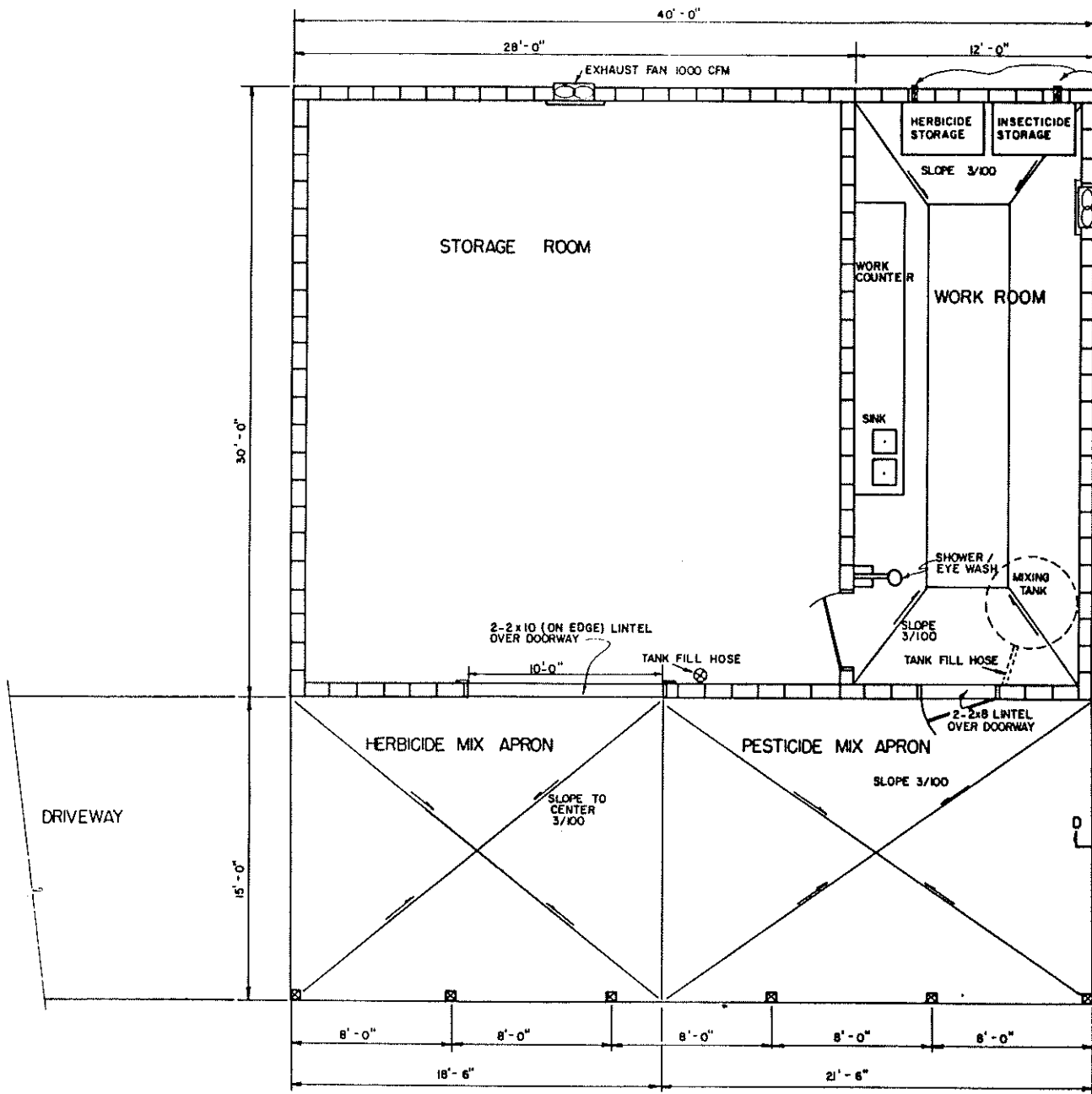


SECTION C-C
12' 9" 6" 3" 0" SCALE

PLAN W/ DRAIN TANK



COOPERATIVE EXTENSION SERVICE AGRICULTURE AND HOME ECONOMICS		
AND UNITED STATES DEPARTMENT OF AGRICULTURE COOPERATING		
PESTICIDE STORAGE AND MIXING FACILITIES		
W.V. '88	6401	SHEET 1 OF 3



PESTICIDE STORAGE CABINETS
VENTED TO OUTSIDE

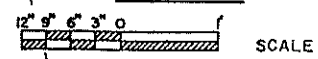
EXHAUST FAN
1000 CFM

NOTE:

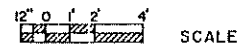
1. SIZE OF MIXING AND HOLDING TANKS WILL DEPEND ON SIZE OF BATCHES THAT ARE NEEDED. HOLDING TANKS COULD BE REDUCED TO 250 GALLONS EACH OR POSSIBLY LESS IF MATERIALS ARE WITHDRAWN FROM THEM DAILY. PLUGS SHOULD BE CONSIDERED FOR APRON DRAINS FOR USE DURING IDLE PERIODS TO PREVENT ANY "SLOW-IN" RAIN WATER FROM FILLING STORAGE TANKS.
2. CHECK WITH LOCAL ENVIRONMENTAL AUTHORITIES REGARDING ACCEPTABILITY OF TANKS. DEPENDING ON MANAGEMENT, TANKS MAY BE SUBJECT TO PERMIT PROCEDURES REQUIRED BY STATE AND FEDERAL HAZARDOUS WASTE GENERATOR REGULATIONS.
3. CARE MUST BE EXERCISED ON MANAGING HOLDING TANK MATERIALS TO AVOID APPLICATION OF ANY PESTICIDE RESIDUE IN AN UNLABELED MANNER.
4. WALL HEIGHTS SHOULD BE ADJUSTED TO SUIT NEEDS. 8' CLEARANCE IS ENOUGH FOR MANUALLY MOVING CONTAINERS. WHEN USING FORK LIFTS, 10' CEILING HEIGHTS SHOULD BE USED.



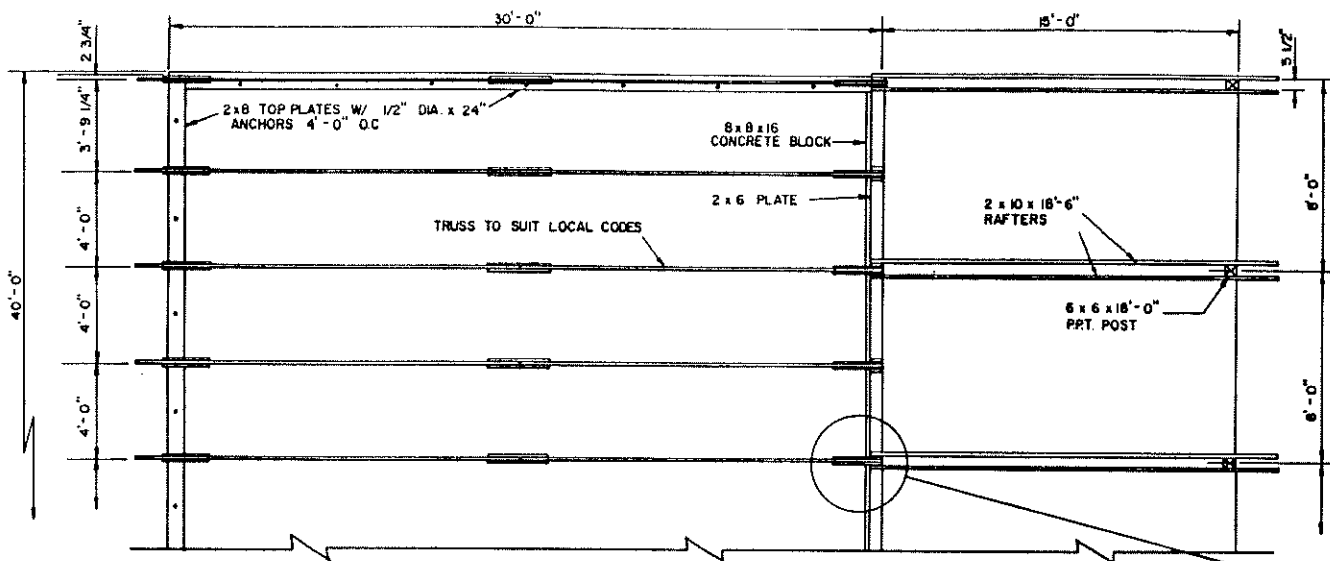
SECTION D-D



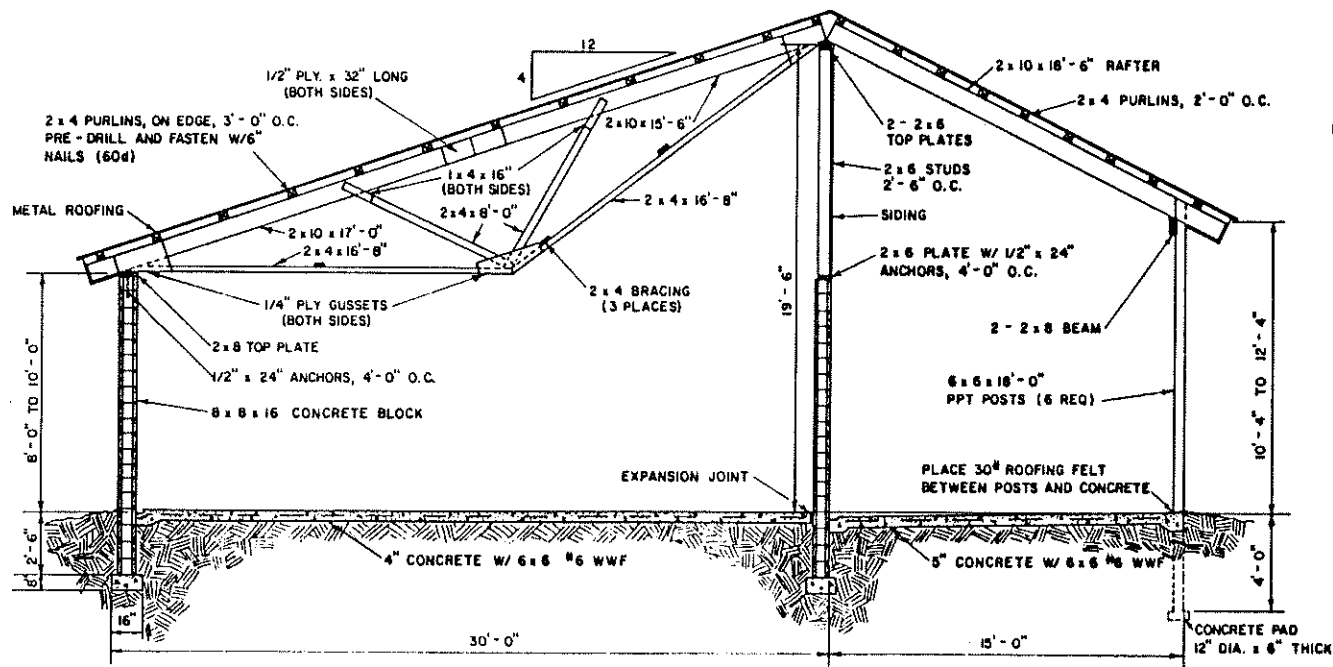
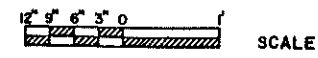
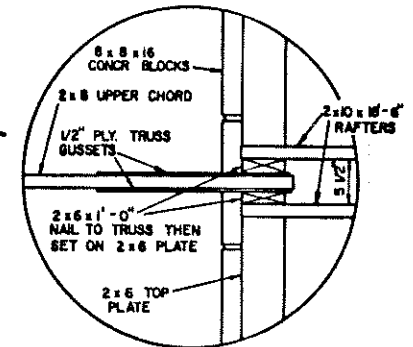
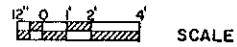
PLAN W/OUT DRAIN TANK



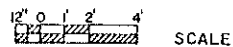
COOPERATIVE EXTENSION SERVICE AGRICULTURE AND HOME ECONOMICS		
AND UNITED STATES DEPARTMENT OF AGRICULTURE COOPERATING		
PESTICIDE STORAGE AND MIXING FACILITY		
W.V. '88	6401	SHEET 2 OF 3



TOP VIEW- TRUSSES - RAFTERS



SECTION A-A



NOTE:

ELEVATION DETAILS SECTION A-A SHOWN FOR EITHER PLAN EXCEPT FOR FLOOR. FOR PLAN W/DRAIN TANK, ADD THE WASH-DOWN CUTTERS SHOWN ON THE ALTERNATIVE PLAN.

COOPERATIVE EXTENSION SERVICE
AGRICULTURE AND HOME ECONOMICS

AND
UNITED STATES DEPARTMENT OF AGRICULTURE COOPERATING

PESTICIDE STORAGE AND
MIXING FACILITY

W.V. '88

6401

SHEET 3 OF 3