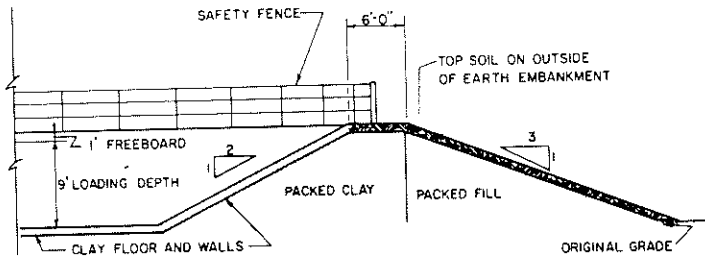
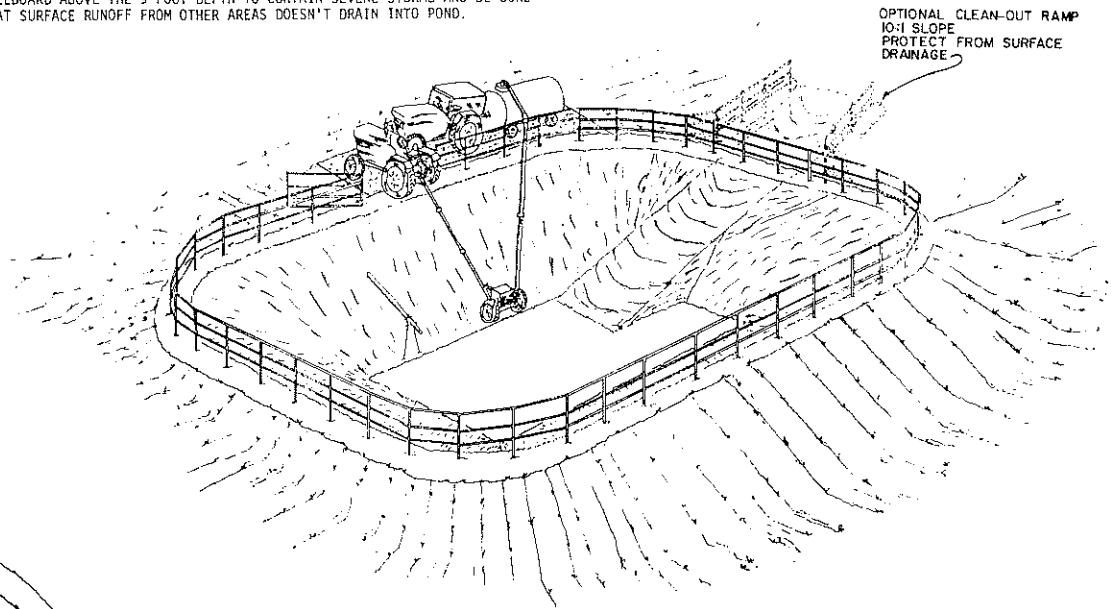


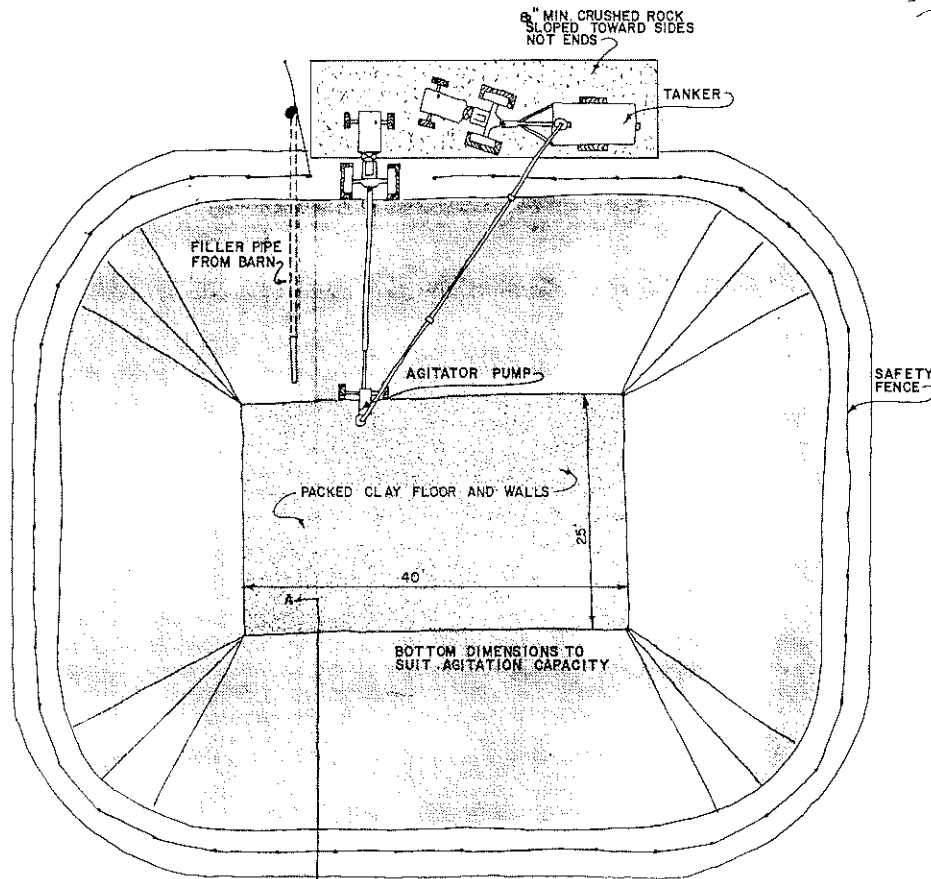
APPROXIMATE CAPACITY ... 9 FT DEPTH IS 22,000 CU FT. NOTE: 1 FT OF SLUDGE ON BOTTOM WILL REDUCE CAPACITY BY 1100 CU FT AND PRECIPITATION WILL FURTHER REDUCE MANURE CARRYING CAPACITY BY ABOUT 400 CU FT FOR EVERY INCH OF RAIN THAT DOESN'T EVAPORATE. MAINTAIN AT LEAST 1 FOOT OF FREEBOARD ABOVE THE 9 FOOT DEPTH TO CONTAIN SEVERE STORMS AND BE SURE THAT SURFACE RUNOFF FROM OTHER AREAS DOESN'T DRAIN INTO POND.



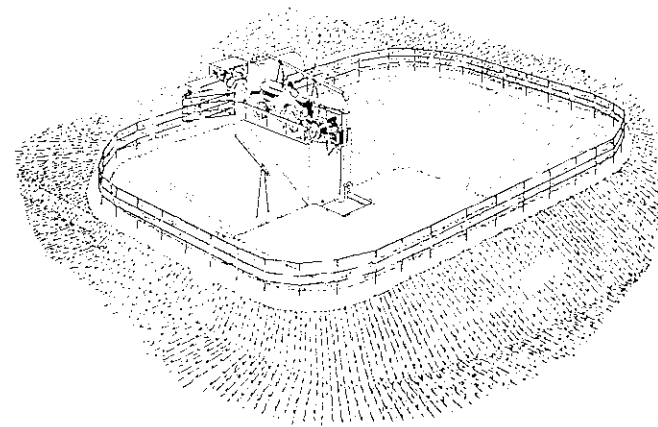
SECTION A-A (NOT TO SCALE)



PERSPECTIVE (not to scale)



PLAN VIEW (NOT TO SCALE)

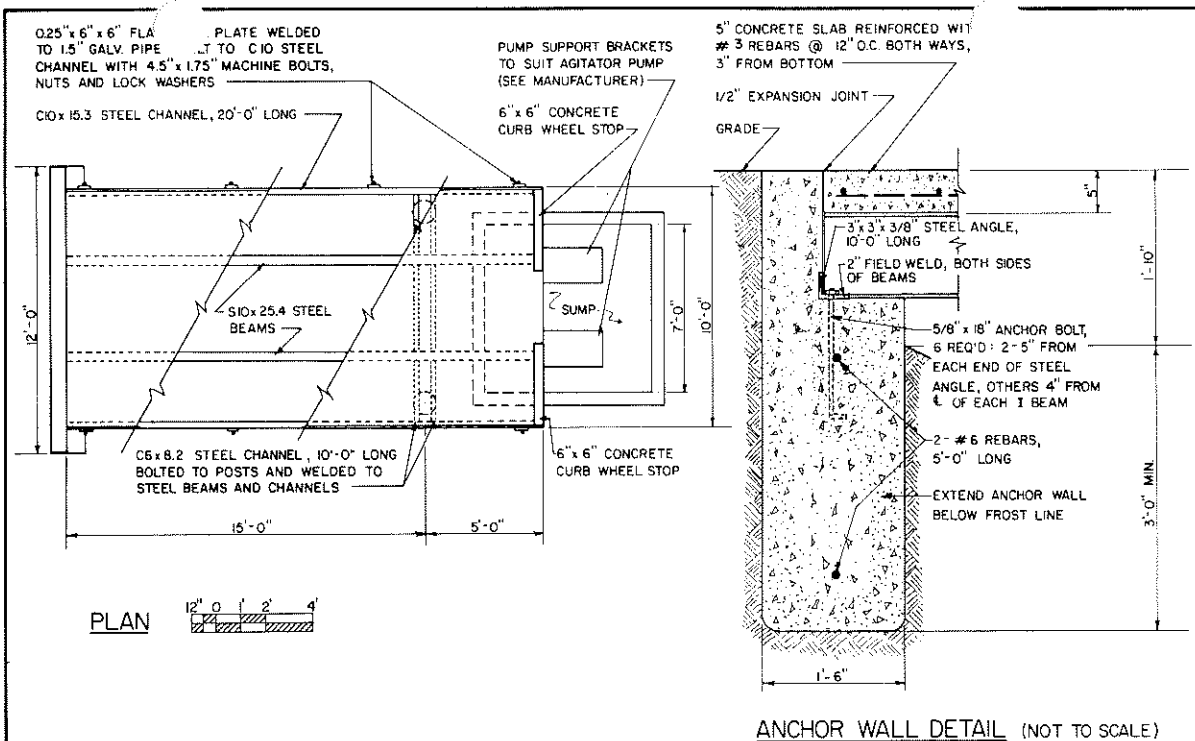


PERSPECTIVE (NOT TO SCALE)

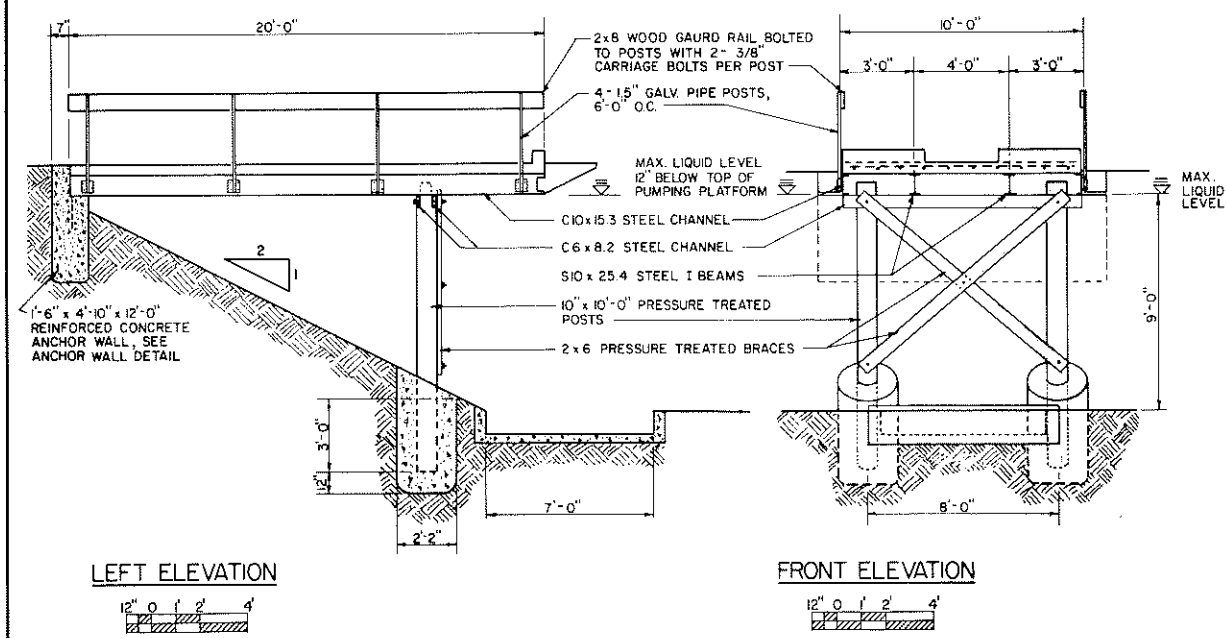
OPTIONAL PLAN (SEE PAGE 2)

CHECK WITH LOCAL OFFICIALS FOR CONFORMANCE WITH LOCAL REGULATIONS AND ADAPTABILITY OF YOUR SITE FOR A CLAY POND. IF ACCESS RAMP IS USED A CONCRETE PAD SHOULD BE PROVIDED AT BOTTOM FOR SCRAPING OUT SLUDGE WITHOUT DISTURBING CLAY LINER.

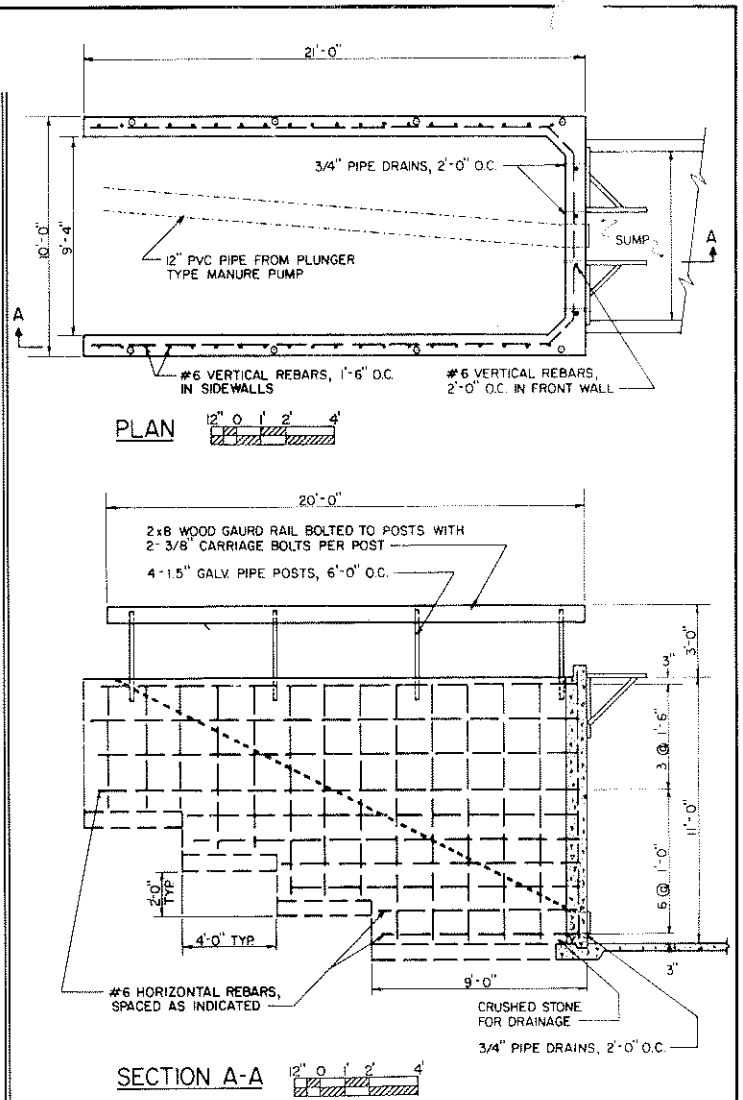
COOPERATIVE EXTENSION SERVICE AGRICULTURE AND HOME ECONOMICS		
AND UNITED STATES DEPARTMENT OF AGRICULTURE COOPERATING		
CLAY-LINED MANURE STORAGE POND		
CAN. 86	6381	SHEET 1 OF 2



ANCHOR WALL DETAIL (NOT TO SCALE)



WOOD POST SUPPORTED PUMPING DOCK



CONCRETE WALL SUPPORTED PUMPING DOCK

NOTE:
ALL CONCRETE TO BE 3000 PSI MIN STRENGTH AT 28 DAYS.

ALL REBARS TO BE 60,000 PSI MIN. YIELD STRENGTH.
#3=3/8" #6= 3/4" DIA.

COOPERATIVE EXTENSION SERVICE AGRICULTURE AND HOME ECONOMICS		
AND UNITED STATES DEPARTMENT OF AGRICULTURE COOPERATING		
CLAY-LINED MANURE STORAGE POND		
CAN 86	6381	SHEET 2 OF 2