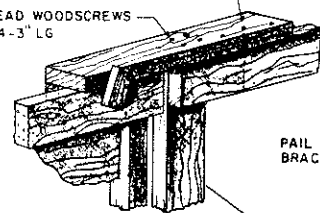


PLAN

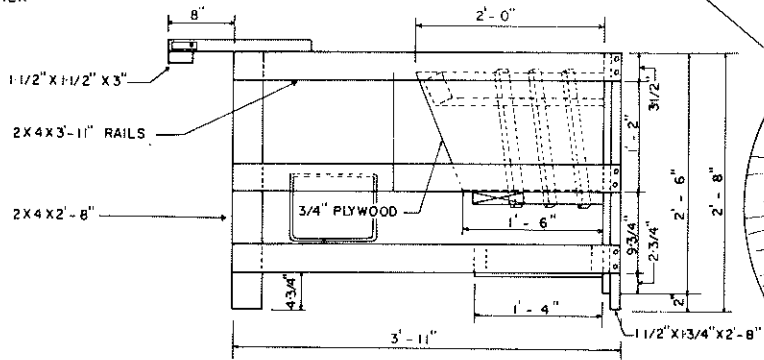
10d NAILS DRILL TOP MEMBER
(STAGGER NAILS)
ROUND HEAD WOODSCREWS -
14-3" LG



PAIL BRACKET

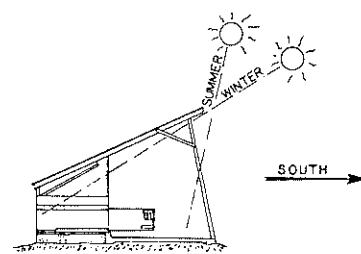
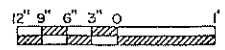
LATCH - 3/4" x 1" x 3"
FASTEN W/ # 14-3" LG
ROUND HEAD WOODSCREW
W/ WASHER

TOP VIEW



FRONT VIEW

SLIDING PARTITION DETAILS

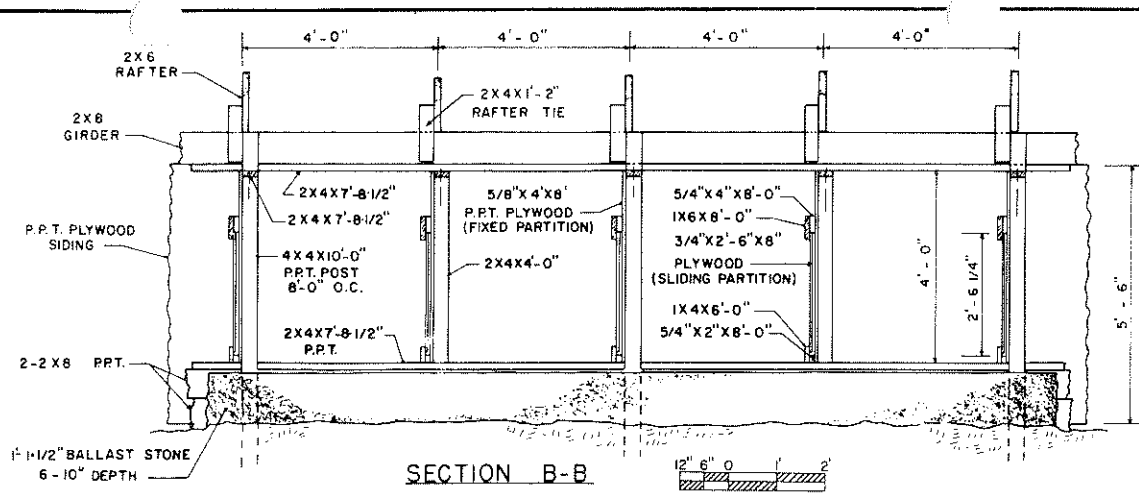


APPROXIMATE SUN ANGLES

NOTES:

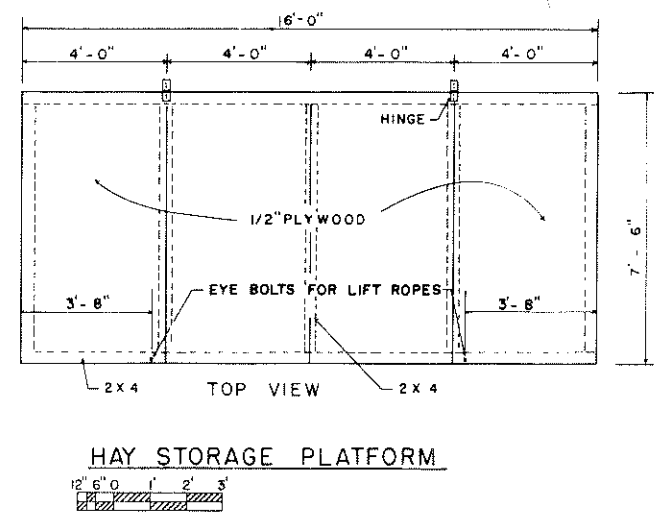
1. CALF PEN PARTITIONS ARE TELESCOPED INWARD FOR TRACTOR CLEANING. MANURE FROM RAISED PORTION OF PENS IS SCRAPPED ONTO LOWER LEVEL AS NEEDED. TELESCOPING ARRANGEMENT IS ALSO USED FOR PUTTING CALVES IN PENS.
2. POLE IS ANGLED OUTWARD AT BASE TO IMPROVE CLEARANCE WHEN USING TRACTOR FOR CLEANING.
3. FRONT EDGE OF ROOF LOCATED SUFFICIENTLY FORWARD OF REAR OF PENS AND AT A HEIGHT TO PERMIT NOON SOLAR PENETRATION TO BACK EDGE OF PENS FOR 2 WINTER MONTHS AT 36° N. LATITUDE AND FOR 4 WINTER MONTHS AT 44° N. LATITUDE. PENETRATION WILL BE GREATER AT OTHER TIMES THAT SUN IS SHINING. CALVES, WHEN IN EXTENDED PORTION OF PEN, WILL BE FULLY SHADED AT NOON FOR 2 SUMMER MONTHS AT 44° N. LATITUDE AND 4 SUMMER MONTHS AT 36° N. LATITUDE. SINCE THE CALVES DO NOT NEED TO STAND FULLY AT THE FRONT OF THE PENS, PARTITIONS OFFER SOME SHADE NEAR DAWN OR DUSK, AND THEIR RODDIES ARE USUALLY ABOVE FLOOR HEIGHTS, THEY WILL HAVE ADEQUATE SHADE FOR THE ENTIRE SUMMER EVEN AT 48° N. LATITUDE. RAISING THE HEIGHT OF THE FRONT EDGE OF THE ROOF WILL INCREASE THE AREA THAT RECEIVES SOLAR ENERGY.
4. STRUCTURE DESIGNED FOR A 30 LB/SQ FT ROOF LOAD

| | | |
|---|------|--------------|
| COOPERATIVE EXTENSION SERVICE AGRICULTURE AND HOME ECONOMICS | | |
| AND UNITED STATES DEPARTMENT OF AGRICULTURE COOPERATING | | |
| SOLAR CALF SHELTER WITH SLIDE-IN PARTITION | | |
| W VA 86 | 6377 | SHEET 1 OF 2 |



SECTION B-B

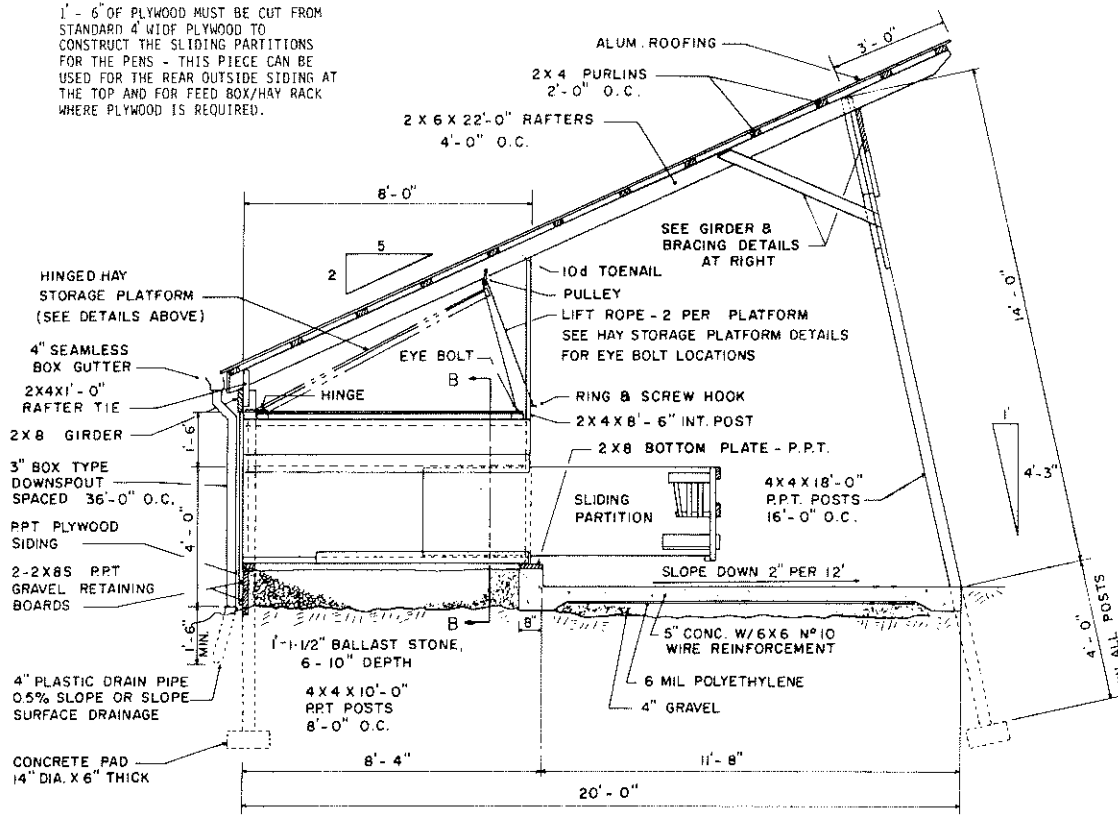
NOTE : HAY STORAGE PLATFORM NOT SHOWN FOR CLARITY



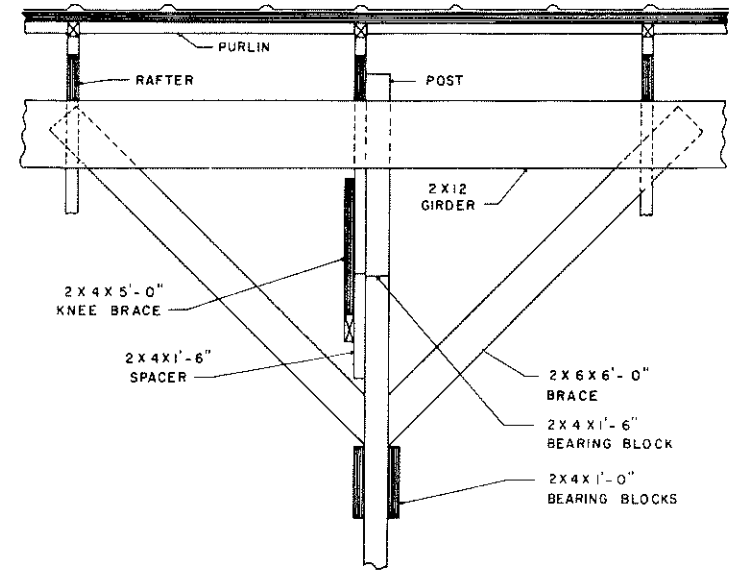
HAY STORAGE PLATFORM

NOTE :

1' - 6" OF PLYWOOD MUST BE CUT FROM STANDARD 4 WID PLYWOOD TO CONSTRUCT THE SLIDING PARTITIONS FOR THE PENS - THIS PIECE CAN BE USED FOR THE REAR OUTSIDE SIDING AT THE TOP AND FOR FEED BOX/HAY RACK WHERE PLYWOOD IS REQUIRED.



SECTION A-A



GIRDER & BRACING DETAILS

COOPERATIVE EXTENSION SERVICE
 AGRICULTURE AND HOME ECONOMICS

AND
 UNITED STATES DEPARTMENT OF AGRICULTURE COOPERATING

SOLAR CALF SHELTER WITH
 SLIDE-IN PARTITION

| | | |
|--------|------|--------------|
| WVA 86 | 6377 | SHEET 2 OF 2 |
|--------|------|--------------|