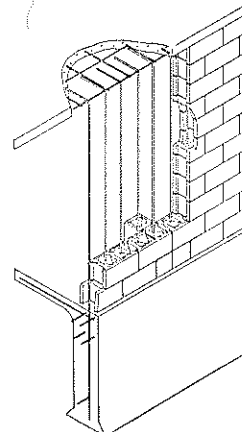
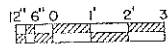
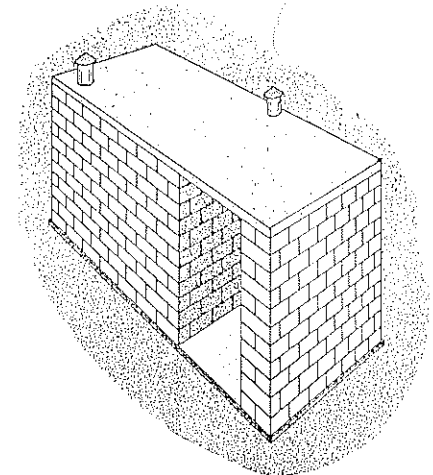


FLOOR PLAN



CUT-AWAY ISOMETRIC OF
SIDEWALL AND ROOF
(NOT TO SCALE)



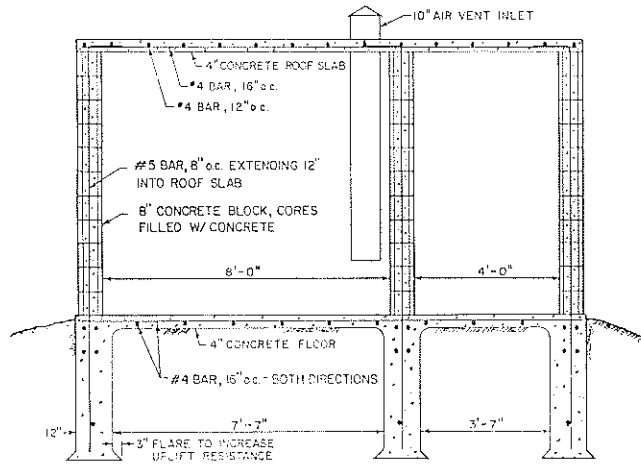
PERSPECTIVE (NOT TO SCALE)

NOTES:

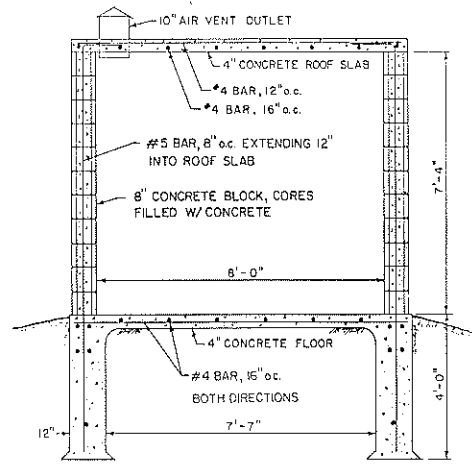
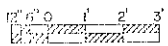
THIS SHELTER IS DESIGNED TO WITHSTAND THE PRESSURES INDUCED BY A 200 MPH WIND AS RECOMMENDED BY "INTERIM GUIDELINES FOR BUILDING OCCUPANT PROTECTION FROM TORNADES AND EXTREME WINDS", TR-83A, DEFENSE CIVIL PREPAREDNESS AGENCY, SEPTEMBER, 1975.

SHELTER OPENING SHOULD FACE AWAY FROM PROBABLE STORM DIRECTION. EASTERN EXPOSURES FIT THE NEED FOR MOST OF U.S..

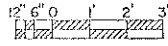
CONSULT LOCAL BUILDING AUTHORITIES BEFORE STARTING CONSTRUCTION.



SECTION A-A



SECTION B-B



BILL OF MATERIALS

DESCRIPTION	QUANTITY
CONCRETE	
FOUNDATION AND FLOOR	10.5 CU. YD.
ROOF	2 CU. YD.
GROUT (ALL CORES FILLED)	6 CU. YD.
MORTAR	9 CU. YD.
CONCRETE BLOCK	
STRETCHER	296
CORNER	56
DOUBLE CORNER	11
HALF CORNER	22
REINFORCED CONCRETE	
LIRTEL, 4'-8" LENGTH	2
REINFORCING STEEL	
NO. 5 (5/8-INCH DIA.)	920 FT.
NO. 4 (1/2-INCH DIA.)	700 FT.
JOINT REINFORCEMENT	500 FT.
AIR VENT (10-INCH DIA.)	8 FT.
STEEL DOOR AND FRAME, 3'-0" X 6'-8"	1

GENERAL SPECIFICATIONS

CONCRETE: 3,500 PSI MINIMUM COMPRESSIVE STRENGTH

STEEL: 40,000 PSI MINIMUM YIELD STRENGTH REINFORCEMENT BARS. OVERLAP SPLICES A MINIMUM OF 12 INCHES AND USE WIRE TIES TO SECURE. DO NOT WELD.

CONCRETE MASONRY: 8-INCH SAND AND GRAVEL BLOCKS

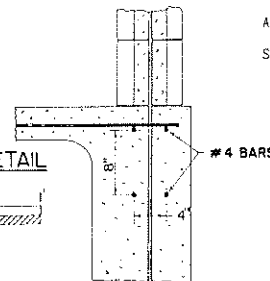
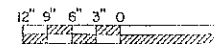
MORTAR: TYPE M OR S

JOINT REINFORCEMENT: PLACE HORIZONTAL, TRUSS-DESIGN, REINFORCEMENT AT EVERY HORIZONTAL MORTAR JOINT. OVERLAP SPLICES A MINIMUM OF 6 INCHES AND USE WIRE TIES TO SECURE.

GROUT: USE NOT LESS THAN 6 BAGS PORTLAND CEMENT PER CUBIC YARD OF GROUT AND AGGREGATE NO LARGER THAN 1/2-INCH DIAMETER.

OTHER USE: ALTHOUGH STRUCTURE MAY BE SUITABLE FOR VEGETABLE OR OTHER STORAGE IT SHOULD NOT BE USED FOR THAT PURPOSE AS IT WILL REDUCE CAPACITY AND MAY BLOCK ENTRY.

FOUNDATION
REINFORCING DETAIL



COOPERATIVE EXTENSION SERVICE
AGRICULTURE AND HOME ECONOMICS

AND
UNITED STATES DEPARTMENT OF AGRICULTURE COOPERATING

ABOVE-GROUND STORM SHELTER

OK 1985 6376 SHEET | OF |