

INSTALLATION

- THE PIPE (LENGTH TO BE DETERMINED BY EACH SPECIFIC INSTALLATION) CORNER JOINTS SHOULD BE PREFABRICATED IN A SHOP.
- A TYPICAL INSTALLATION WILL REQUIRE A PIPE SUPPORT AT SOME POINT (5' TO 10' FROM END) BETWEEN THE TWO VALVES. IF THE ENTRANCE END OF THE PIPE (INSIDE STRUCTURE OR DIKE) IS RESTING ON UNDISTURBED EARTH THE MAIN LENGTH OF PIPE WILL BE RESTING ON VARYING DEPTHS OF NEW FILL. IF THE FILL IS NOT UNIFORMLY AND WELL COMPACTED BELOW THE PIPE, A SETTLING OF THE PIPE WILL OCCUR AND COULD CAUSE THE SAFETY VALVE TO BIND. IN ADDITION TO GOOD COMPACTION OF EARTH BELOW PIPE, A PROVISION ON THE SUPPORT SHOULD BE PROVIDED ALLOWING THE DISCHARGE END OF THE VALVE TO BE LOWERED IF NECESSARY, TO REVERSE THE STRESS ON THE VALVE SECTION.
- IT IS SUGGESTED THAT, WHEN FABRICATING EITHER THE VERTICAL SAFETY OR BUTTERFLY VALVES, A SHORT SECTION OF PIPE BE USED, LENGTH NOT TO BE LESS THAN THE DIAMETER OF THE PIPE. THIS SIMPLIFIES FIELD INSTALLATION TOO: A) TWO BUTT WELDS, B) CLAMPING WITH BANDS (AS SHOWN) OR C) BOLTING TOGETHER OF A CONTINUOUS FLANGE (NOT SHOWN).

OPERATION

- SLIDING VALVES CAN BE OPERATED EITHER HYDRAULICALLY OR MANUALLY (LEVER).
- THE TWO VALVES SHOULD NOT BE OPERATED WITH THE SAME HYDRAULIC POWER SOURCE. ONE MANUALLY AND ONE HYDRAULICALLY OPERATED VALVE WILL PROVIDE GREATER ASSURANCE OF "SHUT-OFF" IN CASE OF POWER SOURCE FAILURE.

HORIZONTAL VALVE

- THE HORIZONTAL END LOADING VALVE WILL BE OPERATED WITH EACH LOAD, THIS COULD CONVENIENTLY BE POWERED BY A HYDRAULIC PUMP DRIVEN BY A TRACTOR, SMALL GAS ENGINE OR ELECTRIC MOTOR.
- TWO INCH DIAMETER HYDRAULIC CYLINDERS ARE SUFFICIENT BUT LARGER CAN BE USED.
- PUMP CAPACITY OF 3+ GPM AT 1000 PSI IS ADEQUATE, HOWEVER, IF USED WITH A LARGER CYLINDER, OPERATION WILL BE SLOW.

VERTICAL SAFETY VALVE

- THE SAFETY VALVE, PREFERABLY LOCATED 2' OR MORE BELOW GRADE IN AN ENCLOSED CHAMBER, SHOULD BE MANUALLY OPERATED AS SHOWN WITH A LEVER.
- THE INITIAL OPENING OF THE VERTICAL SAFETY VALVE (WITH NO PRESSURE DOWNSTREAM OF VALVE) WILL BE MOST DIFFICULT. ONCE PRESSURE HAS EQUALIZED ACROSS VALVE, VALVE SHOULD SLIDE FREELY.
- COARSE BEDDING IN THE MANURE MIGHT CAUSE SOME PROBLEM IN CLOSING THE BUTTERFLY VALVE COMPLETELY. IF THIS OCCURS, REOPENING SLIGHTLY TO LET BEDDING PASS THROUGH WILL ALLEVIATE PROBLEM. THE SAME IS TRUE FOR THE VERTICAL VALVE.

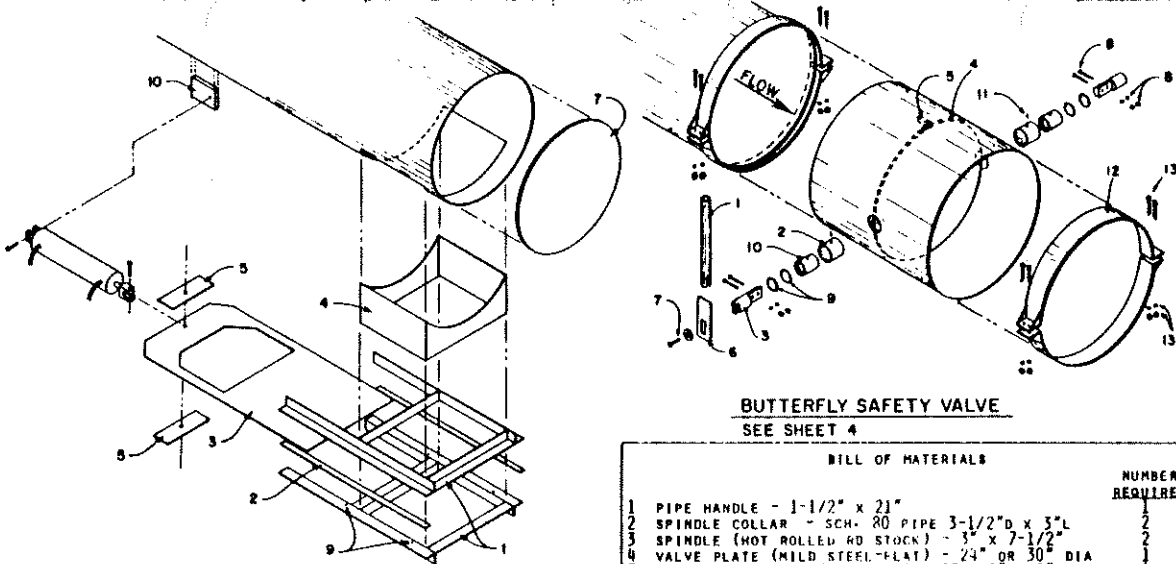
CONSTRUCTION NOTES

- ALL ANGLE STEEL IS 2" x 2" x 1/4" MILD STEEL.
- ALL WELDS ARE CONTINUOUS.
- CHECK ALL PIPE FOR ROUNDNESS BEFORE CUTTING ANY MATERIAL. SOME PARTS MAY HAVE TO BE "FITTED".
- PIPE WALL THICKNESS IS NOT CRITICAL; PREFERABLY NOT LESS THAN 1/4" WHERE CMP (CORRUGATED METAL PIPE) IS USED, SPECIAL CONNECTIONS, ADAPTATION AND WELDING PROCEDURES WILL BE NECESSARY.
- GREASE FITTINGS ARE SHOWN AND SUGGESTED AS A PREVENTIVE MAINTENANCE OPTION. RECOMMENDED GREASING AFTER EACH PERIOD OF USE.
- DO NOT USE A CYLINDER WITH LONGER THAN 16" STROKE ON HORIZONTAL VALVE.
- MAKE SURE HYDRAULIC CYLINDER "BOTTOMS" INTERNALLY, AND WILL NOT FORCE AGAINST VALVE FRAME WHEN EXTENDED.
- CORNER FILL GUSSETS (ITEM NO. 6) IN VERTICAL SAFETY VALVE MUST BE WELDED ALL AROUND AND GROUND IF NECESSARY TO PROVIDE A SMOOTH, FLUSH SURFACE NEXT TO SLIDE VALVE.

BILL OF MATERIALS

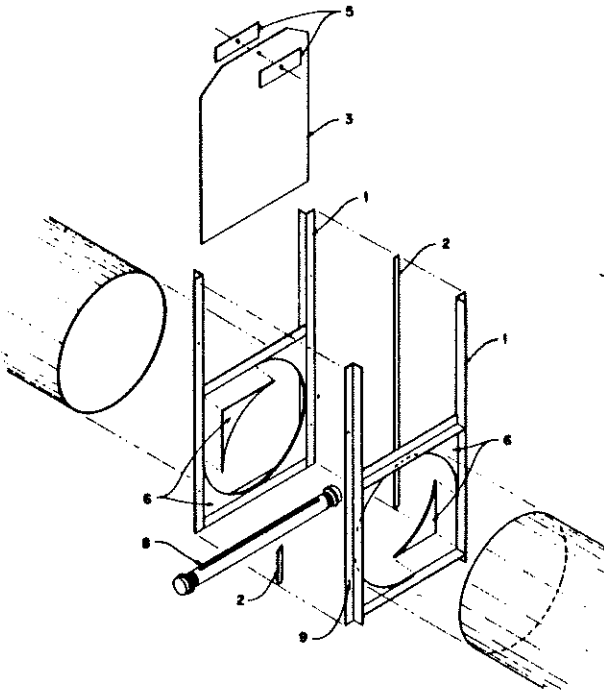
ITEM	HORIZONTAL VALVE	VERTICAL SAFETY VALVE	
		24"	30"
1. ANGLE - 1/4" x 2" x 2"	18'	24'(1)	30'(1)
2. FLAT STOCK - 3/8" x 1"	6'	8'(1)	10'(1)
3. SLIDE VALVE - 1/4" SHEET	20" x 42"	26" x 33"	32" x 39"
4. CHUTE - 1/4" SHEET	4-8" x 18"	2-3" x 10"	2-3" x 10"
5. VALVE HOLE REINFORCEMENT - 1/4" SHEET	2-3" x 10"		
6. CORNER GUSSETS - 1/4" SHEET		4-12" x 12"(2)	4-15" x 15"(2)
7. END CLOSURE - 1/4" SHEET		24" x 24"(3)	30" x 30"(3)
8. PIPE, 2" + 2 CAPS		31"	37"
9. GREASE FITTINGS	4	8	8
10. CYLINDER ANCHOR PLATE	3/4" x 6" x 8"		
WELDING ROD EST.	2-3#	3-4#	4-5#

- (1) MORE MAY BE NEEDED IF FRAME IS EXTENDED TO SUPPORT HYDRAULIC CYLINDER
- (2) EACH SQUARE MAKES TWO GUSSETS
- (3) THESE MAY HAVE TO BE SLIGHTLY BIGGER IF PIPE IS NOT ROUND



HORIZONTAL VALVE

SEE SHEETS 2 AND 3



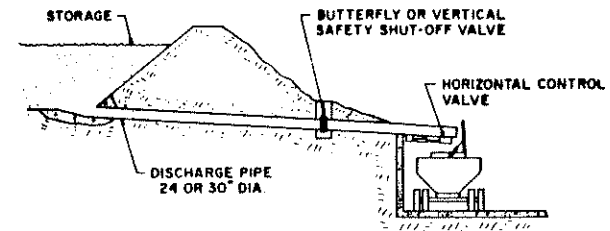
VERTICAL SAFETY VALVE

SEE SHEET 2

BUTTERFLY SAFETY VALVE

SEE SHEET 4

BILL OF MATERIALS		NUMBER REQUIRED
1	PIPE HANDLE - 1-1/2" x 21"	2
2	SPINDLE COLLAR - SCH. 40 PIPE 3-1/2" OD x 3" L	2
3	SPINDLE (HOT ROLLED STOCK) - 3" x 7-1/2"	2
4	VALVE PLATE (MILD STEEL PLAT) - 24" x 30" DIA	1
5	VALVE PLATE STOP (SO STOCK) - 1" x 1 1/2" x 2"	1
6	HANDLE END (FLAT STOCK) - 1/2" x 3" x 10"	1
7	CAP SCREW - 5/8" NC x 2" AND FLAT WASHER	4 EA
8	BOLTS - 5/8" NC x 2-1/2" W/NUTS AND LOCK WASHERS	4 EA
9	O-RING - 3/16" x 2-7/8" ID x 3-1/4" OD	4
10	BUSHING (BRASS) - 5.015" ID x 5.55" OD x 3" LN	2
11	GREASE FITTING	2
12	BAND (FLAT STOCK) - 1/4" x 3" x 4" (24" PIPE)	4 EA
	1/4" x 3" x 5" (30" PIPE)	4 EA
13	BOLTS - 1/2" NC x 4" W/NUTS AND LOCK WASHERS	8 EA



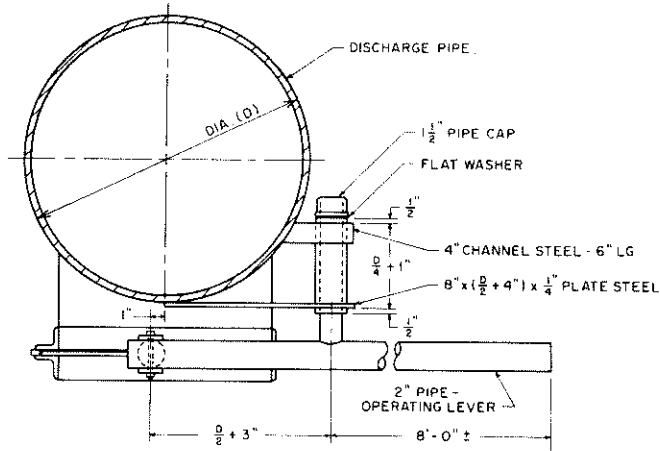
CROSS SECTION OF GRAVITY LOAD-OUT FROM STORAGE

COOPERATIVE EXTENSION SERVICE
AGRICULTURE AND HOME ECONOMICS

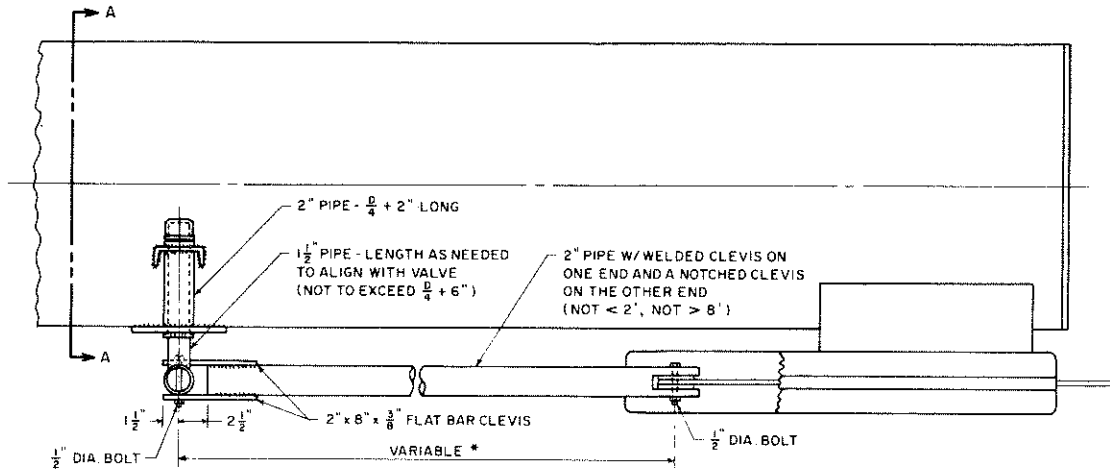
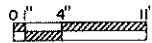
AND
UNITED STATES DEPARTMENT OF AGRICULTURE COOPERATING

VALVES FOR GRAVITY MANURE HANDLING

WV-NY '84	6361	SHEET 1 OF 4
-----------	------	--------------



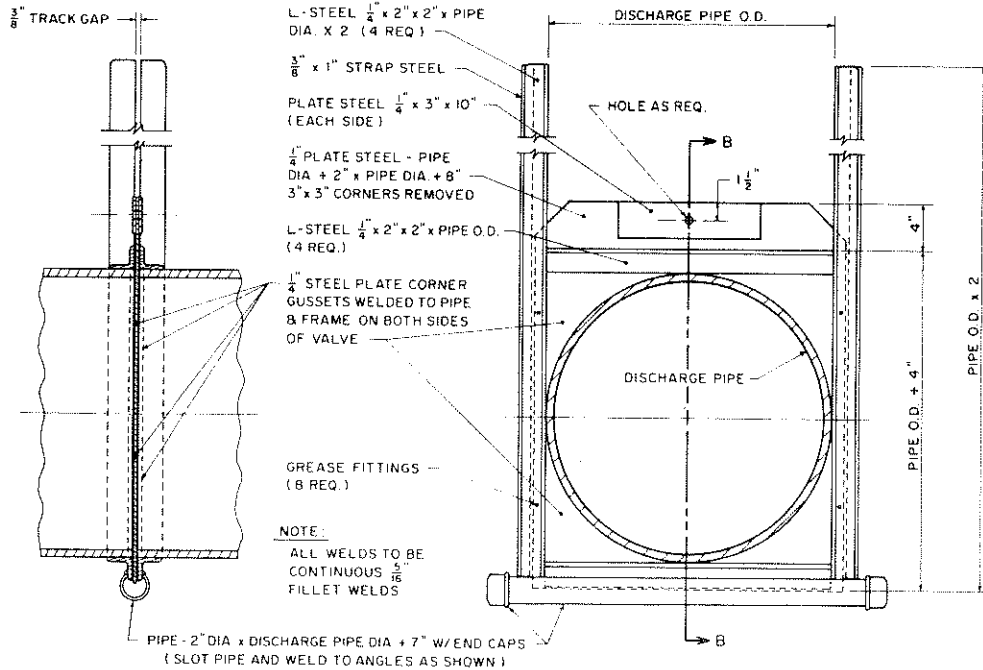
SECTION A-A



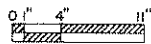
LEVER OPERATED HORIZONTAL VALVE



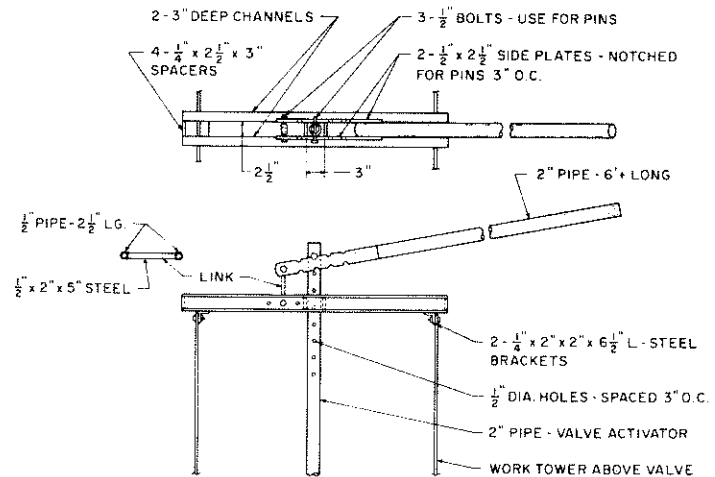
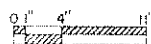
* 2" DIA. PIPE LENGTH TO BE DETERMINED WHEN VALVE IS IN MID OPEN POSITION AND THE OPERATING LEVER IS \perp TO THE DISCHARGE PIPE



SECTION B-B



VERTICAL SAFETY VALVE



LEVER OPERATOR FOR VERTICAL SAFETY VALVE

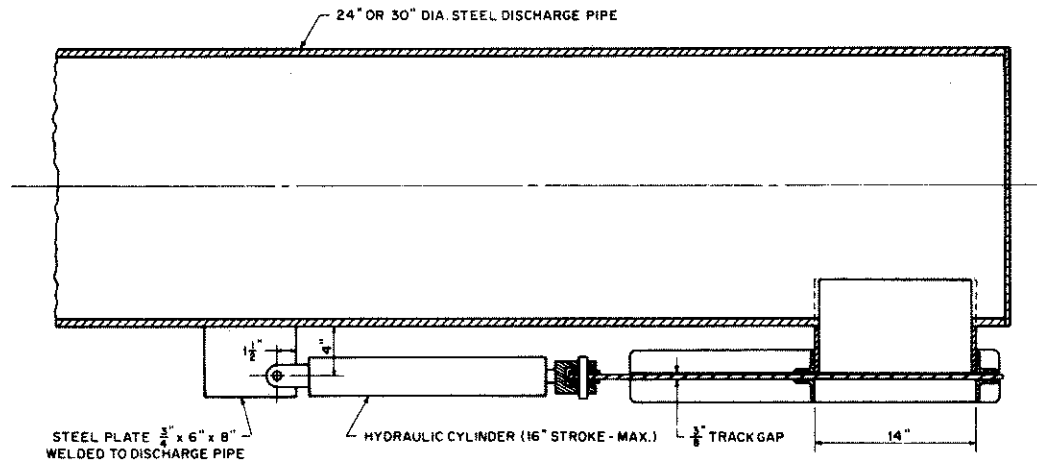
NOT TO SCALE

COOPERATIVE EXTENSION SERVICE
AGRICULTURE AND HOME ECONOMICS

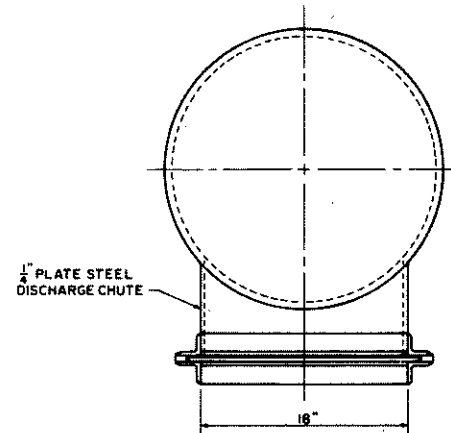
AND
UNITED STATES DEPARTMENT OF AGRICULTURE COOPERATING

VALVES FOR GRAVITY MANURE HANDLING

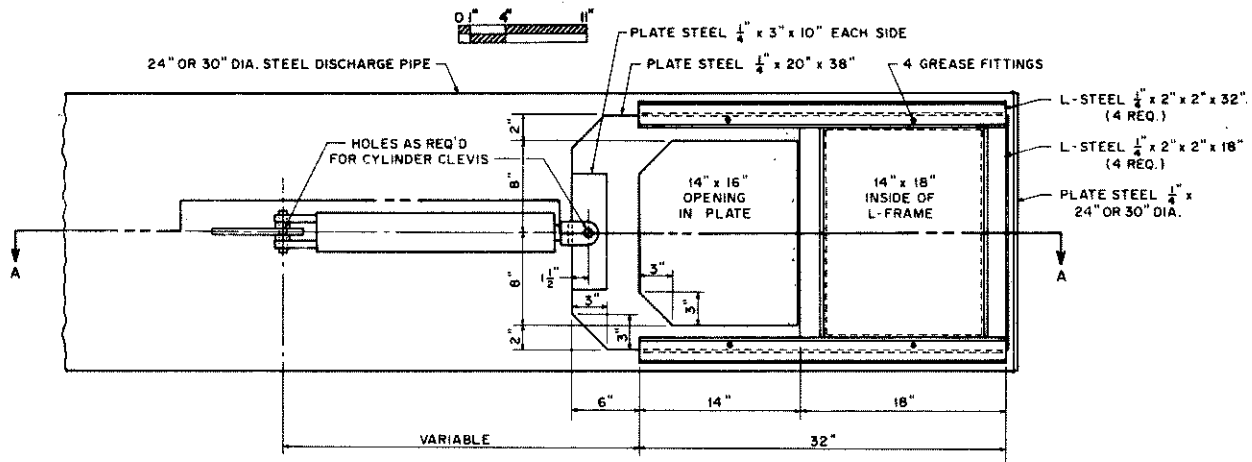
WV-NY '83 6361 SHEET 2 OF 4



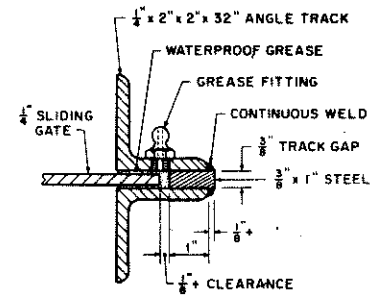
SECTION A-A



END VIEW



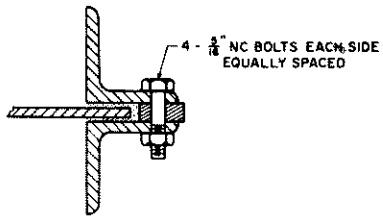
BOTTOM VIEW



TRACK DETAIL

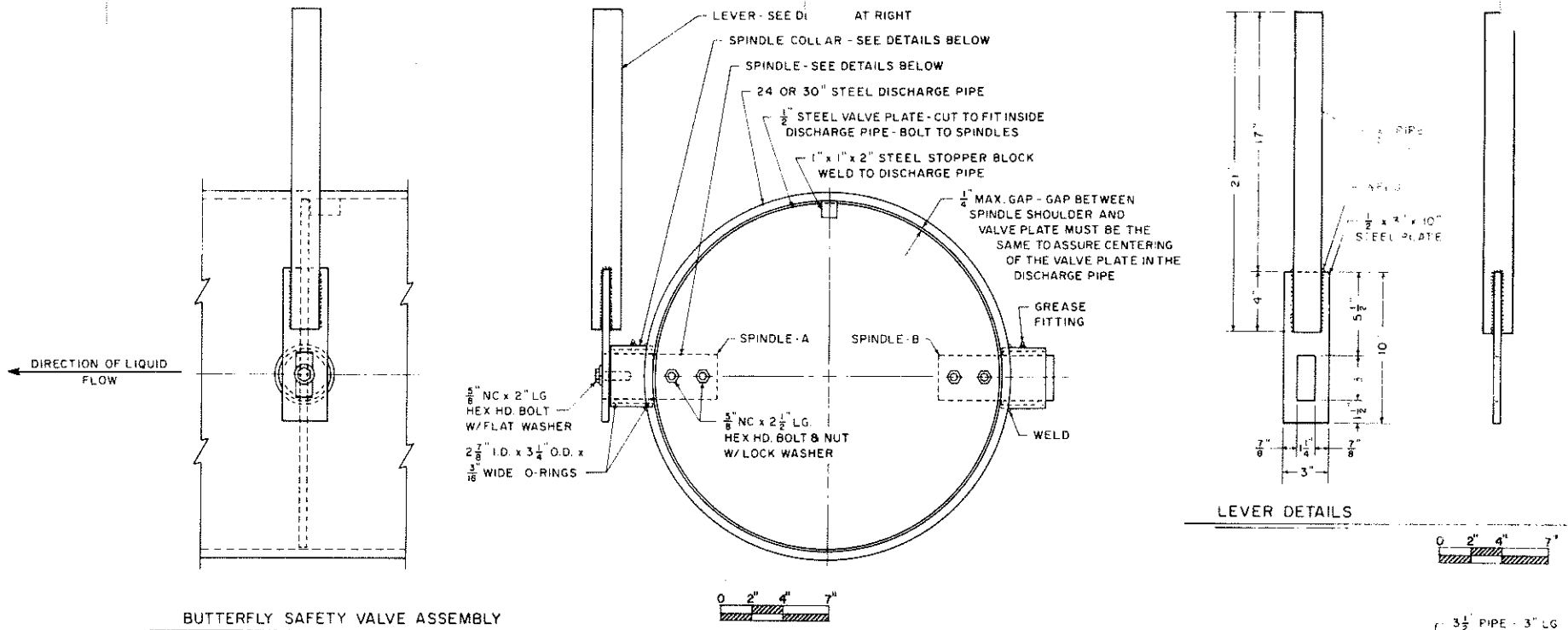
NOTE:
ALL WELDS TO BE CONTINUOUS
FILLET WELDS

HORIZONTAL VALVE

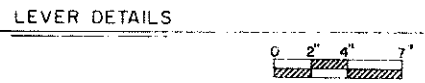


OPTIONAL TRACK DETAIL

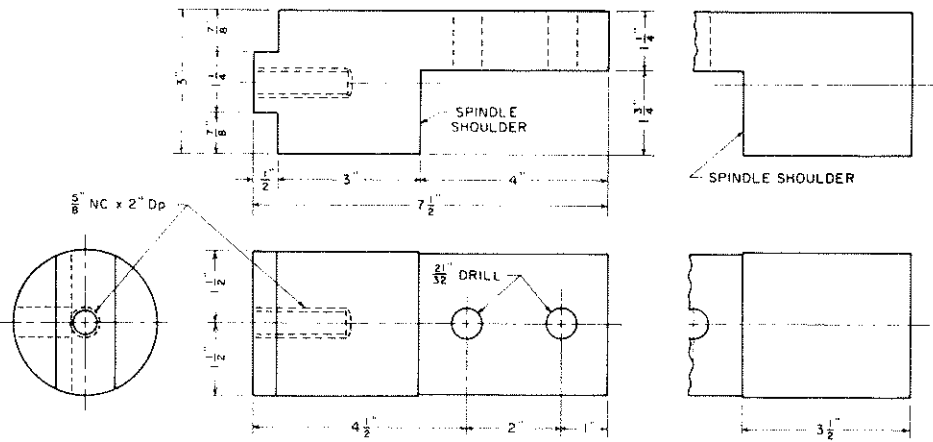
COOPERATIVE EXTENSION SERVICE AGRICULTURE AND HOME ECONOMICS		
AND UNITED STATES DEPARTMENT OF AGRICULTURE COOPERATING		
VALVES FOR GRAVITY MANURE HANDLING		
WV-NY '83	6361	SHEET 3 OF 4



BUTTERFLY SAFETY VALVE ASSEMBLY

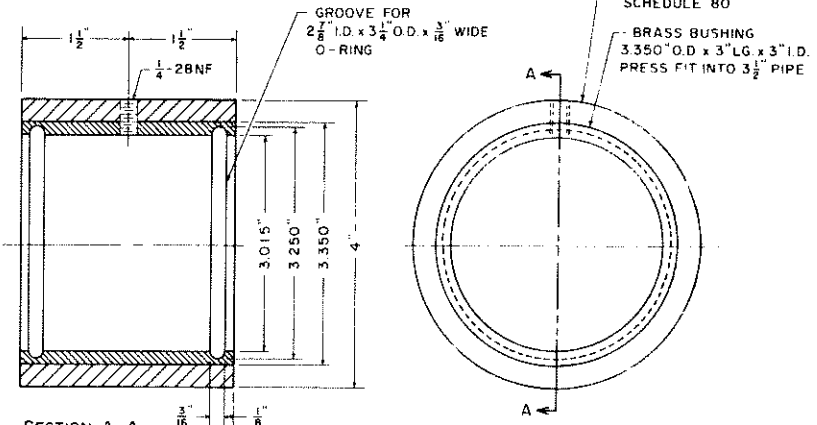


LEVER DETAILS



SPINDLE DETAILS - A

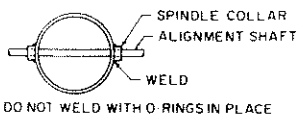
SPINDLE DETAILS - B



SPINDLE COLLAR DETAILS

NOTE:
ALL OTHER DETAILS FOR SPINDLE - B
SAME AS SPINDLE - A

NOTE:
TO ALIGN SPINDLE COLLARS - INSERT
3\"/>



COOPERATIVE EXTENSION SERVICE AGRICULTURE AND HOME ECONOMICS		
AND UNITED STATES DEPARTMENT OF AGRICULTURE COOPERATING		
VALVES FOR GRAVITY MANURE HANDLING		
WV-NY '83	6361	SHEET 4 OF 4