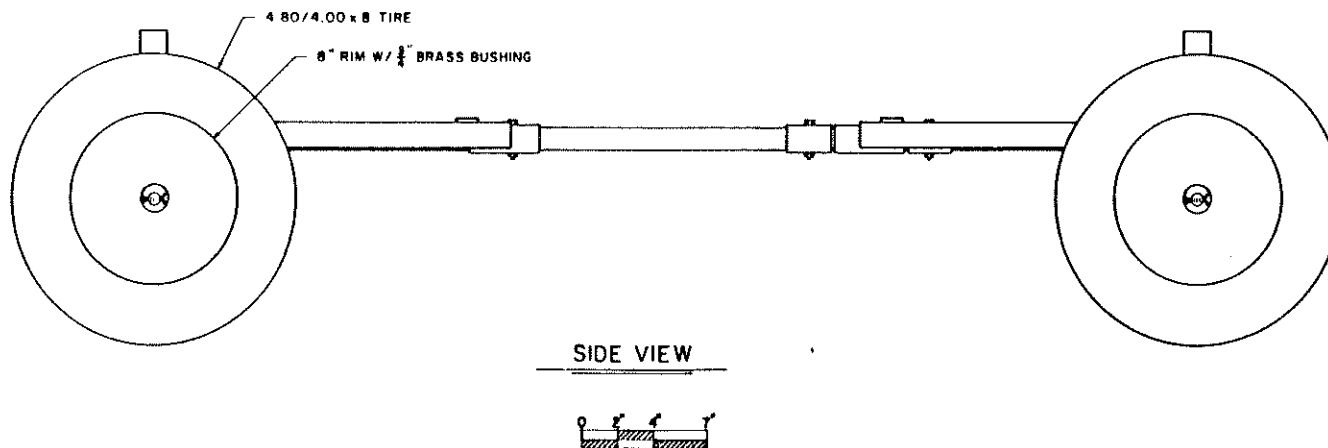


PT.NO.	MATERIAL	QUAN.
1	1 1/2" x 1 1/2" x 1/8" x 26 1/2" SQ STEEL TUBING	1
2	1 1/2" x 1 1/2" x 1/8" x 30" SQ STEEL TUBING	1
3	1 1/2" x 1 1/2" x 1/8" x 21" L-STEEL	4
4	1/2" x 1 1/2" x 5" STRAP STEEL	2
5	1/2" x 1 1/2" x 23" STRAP STEEL	2
6	1/2" x 1 1/2" x 5" STRAP STEEL	4
7	1/2" x 1 1/2" x 1 1/2" STRAP STEEL	12
8	1/2" x 1/2" x 2" SQ STEEL	2
9	1/2" x 1" x 15" STRAP STEEL	2
10	1/2" x 1 1/2" x 5" STRAP STEEL	2
11	1/2" x 2" x 2" STRAP STEEL	2
12	1/2" x 2" x 5 1/2" STRAP STEEL	2
13	1/2" x 2" x 3 1/4" STRAP STEEL	2
14	1/2" PIPE - 4" LONG	3
15	1/2" PIPE - 2 1/2" LONG	2
16	1" PIPE - 60" LONG	1
17	1/2" x 1 1/2" x 6" STRAP STEEL	2
18	1/2" x 1 1/2" x 6 1/2" STRAP STEEL	2
19	1 1/2" x 1 1/2" x 1/8" x 30" SQ STEEL TUBING	1
20	1/2" x 1 1/2" x 6 3/8" STRAP STEEL	1
21	1/2" x 1 1/2" x 2 3/4" STRAP STEEL	2
22	1/2" x 2 1/2" x 2 1/2" STEEL PLATE	2
23	1/2" x 1 1/2" x 11" STRAP STEEL	1
24	1 1/2" DIA x 3" LG. COLD ROLLED - DRILL FOR 3/4" DIA. COLD ROLLED STEEL	2



COOPERATIVE EXTENSION SERVICE
AGRICULTURE AND HOME ECONOMICS

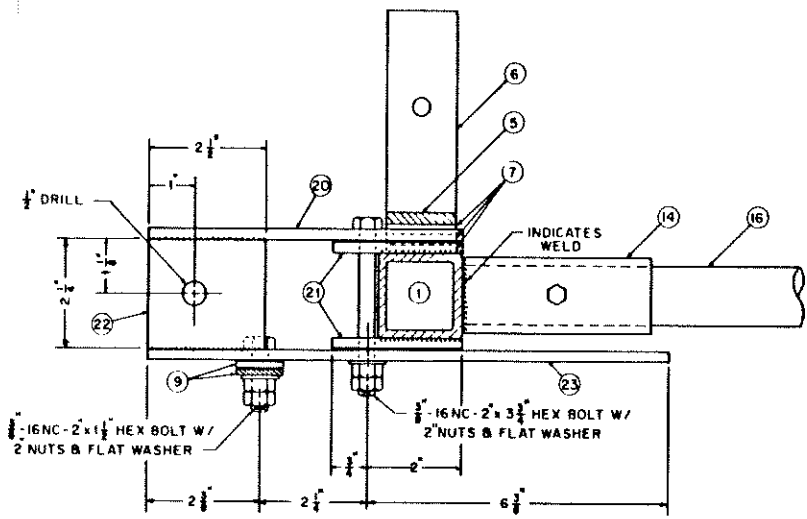
AND
UNITED STATES DEPARTMENT OF AGRICULTURE COOPERATING

4-WHEEL LAWN & GARDEN TRAILER

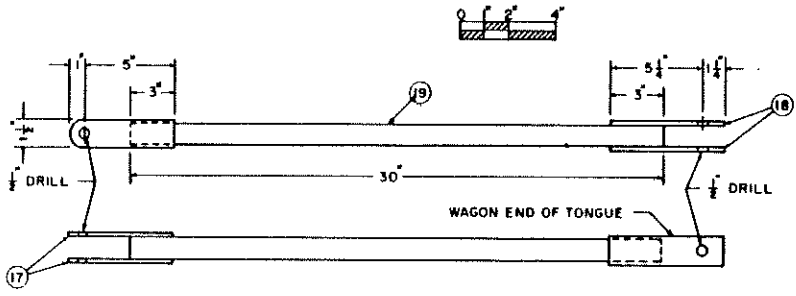
WV '84

6358

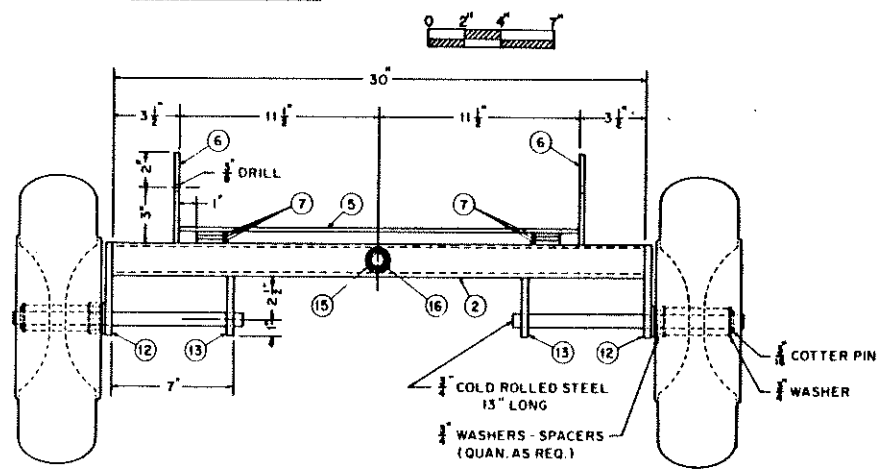
SHEET 1 OF 2



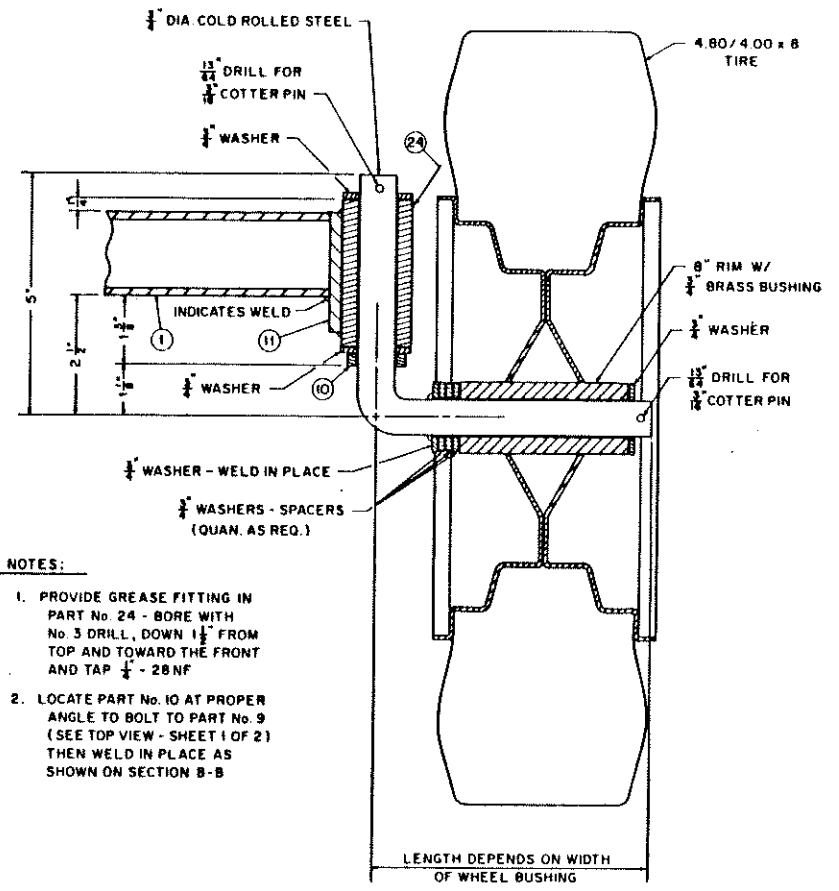
SECTION A - A



TONGUE DETAILS



REAR VIEW



SECTION B - B

- NOTES:
1. PROVIDE GREASE FITTING IN PART No. 24 - BORE WITH No. 3 DRILL, DOWN 1/2" FROM TOP AND TOWARD THE FRONT AND TAP 1/4" - 28 NF
 2. LOCATE PART No. 10 AT PROPER ANGLE TO BOLT TO PART No. 9 (SEE TOP VIEW - SHEET 1 OF 2) THEN WELD IN PLACE AS SHOWN ON SECTION B - B