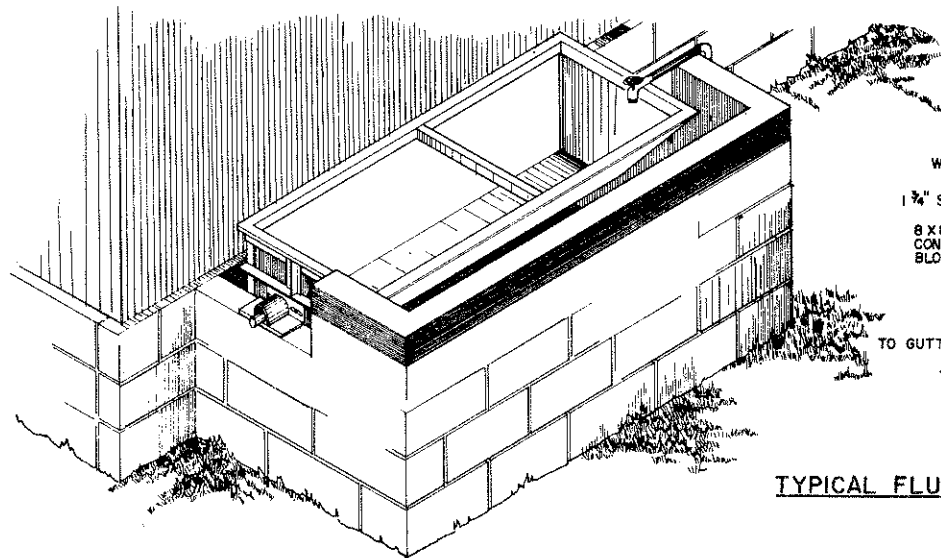
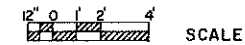
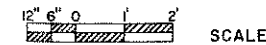
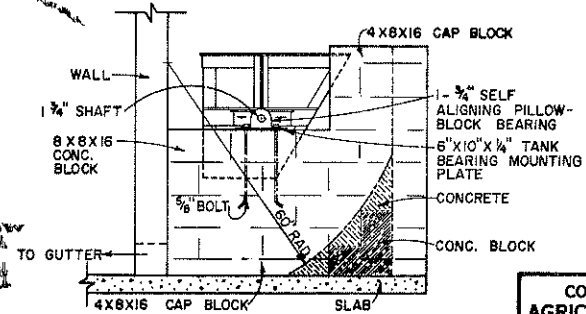


PLAN VIEW



TYPICAL FLUSH TANK



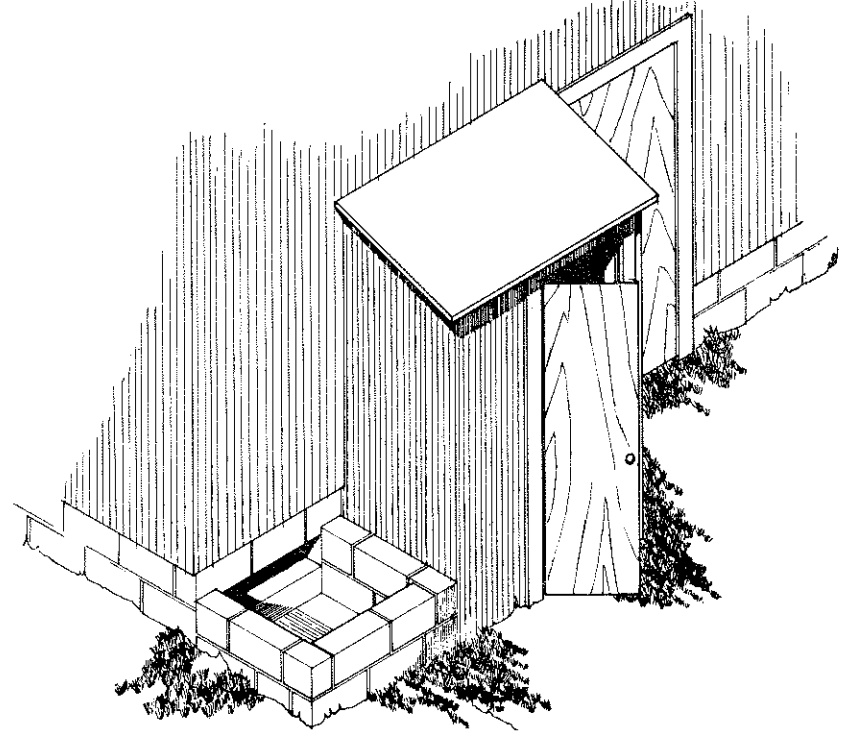
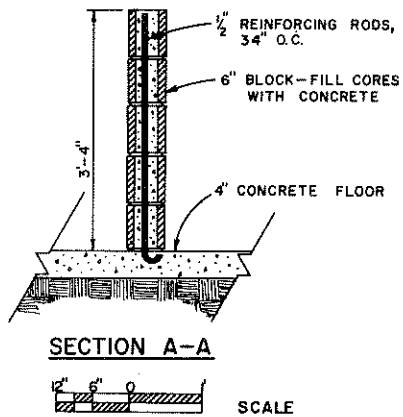
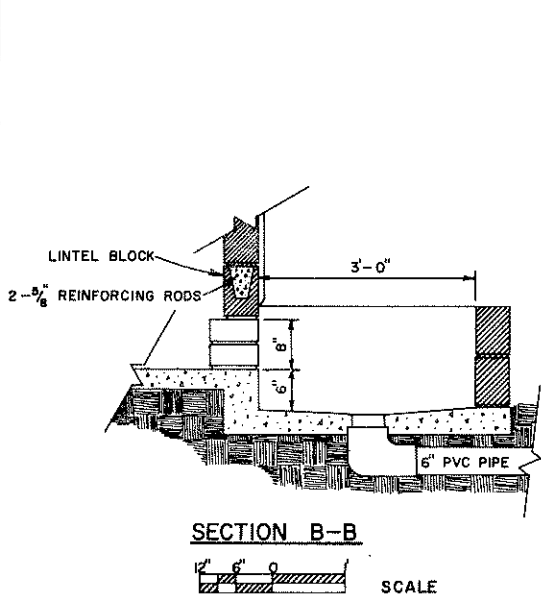
- NOTES FOR FLUSH TANK:
1. USE 12 GA. SHEET METAL WELDED TO ANGLE IRON FRAME AND PAINTED TO RESIST CORROSION.
 2. MAKE TANK SHAFT PLATE ADJUSTABLE FOR FINAL BALANCING—WEIGHTS MAY BE NEEDED.
 3. FILL CORES OF ALL BLOCK WITH CONCRETE.

COOPERATIVE EXTENSION WORK IN
AGRICULTURE AND HOME ECONOMICS

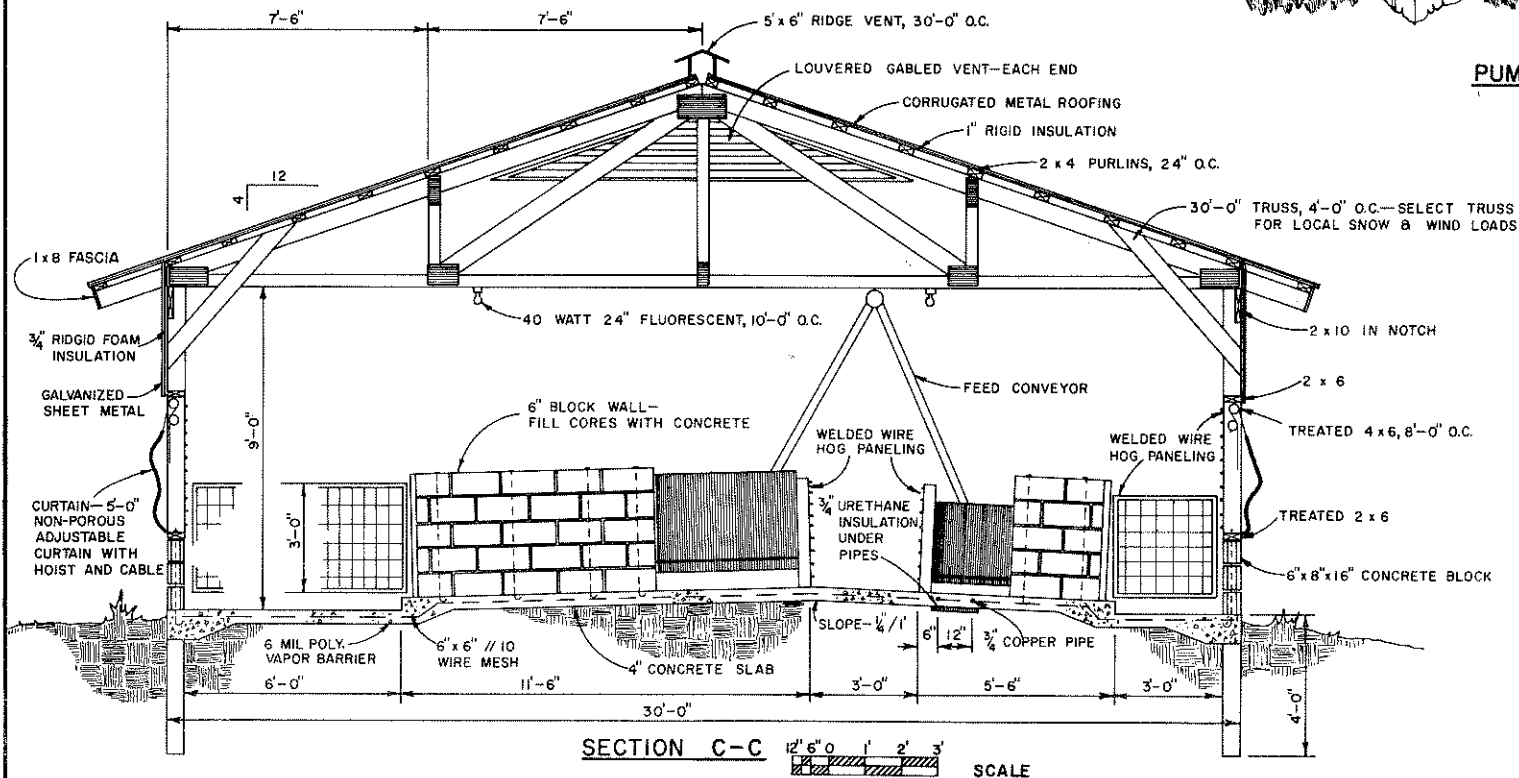
AND
UNITED STATES DEPARTMENT OF AGRICULTURE COOPERATING

SWINE GROWING & FINISHING BLDG.

AL. '80 EX. 6354 SHEET 1 OF 2



PUMP ROOM AND SUMP



COOPERATIVE EXTENSION WORK IN AGRICULTURE AND HOME ECONOMICS		
AND UNITED STATES DEPARTMENT OF AGRICULTURE COOPERATING		
SWINE GROWING & FINISHING BLDG.		
AL. '80	EX. 6354	SHEET 2 OF 2