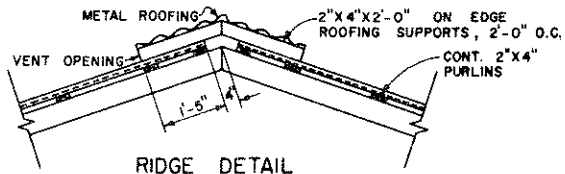
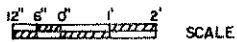
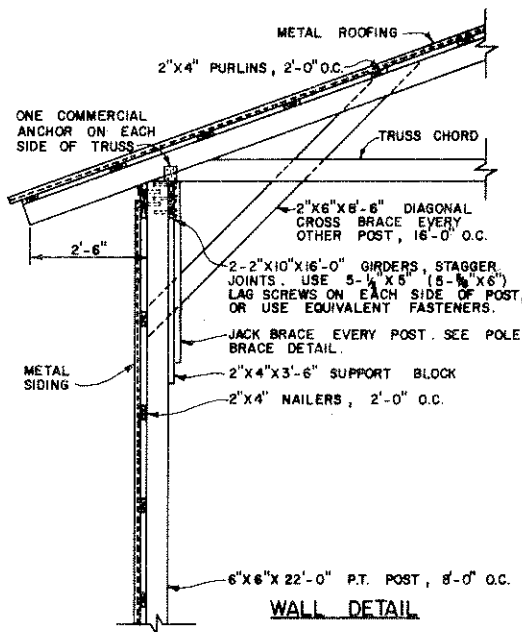
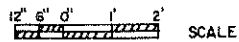


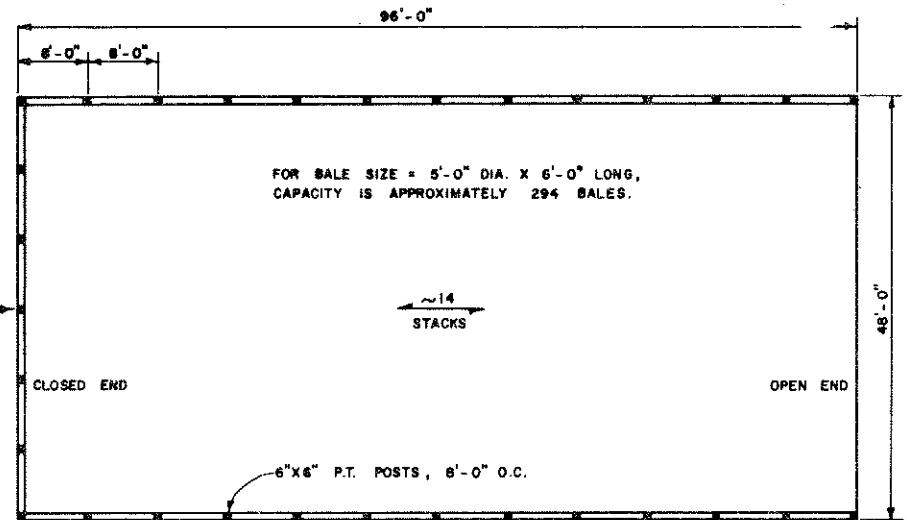
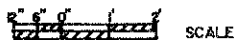
POLE BRACING DETAIL



RIDGE DETAIL



WALL DETAIL

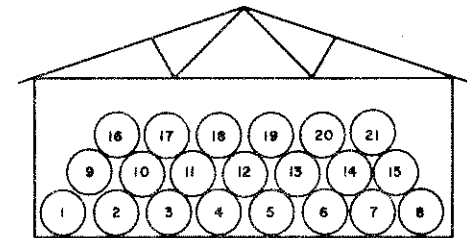


PLAN

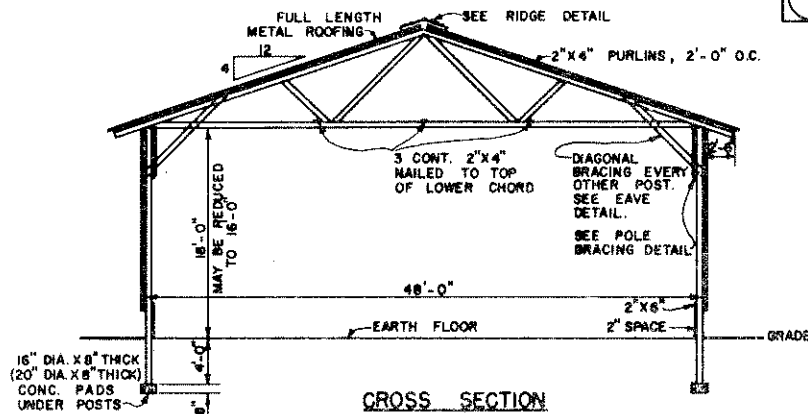


NOTES:

1. P.T. = PRESSURE TREATED. TREAT TO A PRESERVATION RETENSION OF 5-7 POUNDS PER CUBIC FOOT AS PER A.W.P.A. STANDARDS.
2. BALES WILL SETTLE AND SPREAD. ALLOW 4"-5" ON ALL SIDES OF EACH BALE WHEN PLANNING STORAGE.
3. SELECT TRUSS THAT SUPPORTS SNOW AND WIND LOADS FOR YOUR AREA. SPACE TRUSSES 4' O.C. (2' O.C.). DESIGN SHOWN IS FOR A 20 LBS. PER SQ. FT. SNOW LOAD. FIGURES IN () INDICATE REQUIREMENTS FOR A 30 LBS. PER SQ. FT. SNOW LOAD.



STACKING DIAGRAM
(21 BALES, 5' DIAMETER)



CROSS SECTION



COOPERATIVE EXTENSION WORK IN
AGRICULTURE AND HOME ECONOMICS

AND
UNITED STATES DEPARTMENT OF AGRICULTURE COOPERATING

MAY STORAGE FOR LARGE ROUND BALES

TN '80 EX. 6350 SHEET 1 OF 1