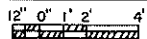


PUMPED RECYCLED LAGOON WATER SYSTEM

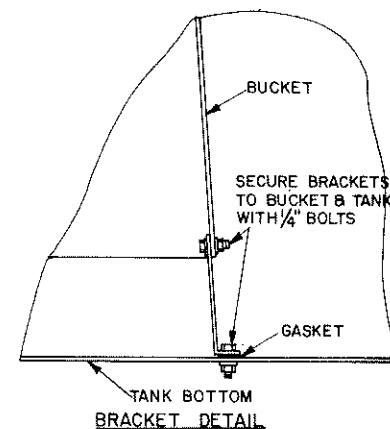


COOPERATIVE EXTENSION WORK IN AGRICULTURE AND HOME ECONOMICS		
AND UNITED STATES DEPARTMENT OF AGRICULTURE COOPERATING		
FLUSH SYSTEMS		
SC 78	EX. 6349	SHEET 1 OF 3
REVISED '83		

SUGGESTED SYPHON SIZES FOR 100' GUTTER ON 1/2% SLOPE WITH VARIOUS GUTTER WIDTHS

GUTTER WIDTH- INCHES	QUANTITY OF WATER-GAL.	SYPHON SIZE - INCHES	BELL DIAMETER-INCHES
12-30	50-100	3	12-14
30-40	100-175	4	14-16
40-50	175-200	DOUBLE 4 OR 6	16-18
88	250-300	DOUBLE 6	16-18

- NOTES:
1. OPERATOR SHOULD CONSIDER ALTERNATIVE OF RECYCLING LAGOON WATER FOR FLUSHING PURPOSES IN BREEDING, GESTATION, GROWING, AND FINISHING BUILDINGS.
  2. DIMENSIONS SHOWN WILL WORK FOR TANKS UP TO 30 INCHES DEEP. IF DEEPER TANKS ARE TO BE USED, CONSULT YOUR EXTENSION OFFICE FOR PROPER DIMENSIONS.
  3. L<sub>1</sub> DETERMINES HEIGHT OF WATER IN TANK BEFORE FLUSH BEGINS. DO NOT GLUE THIS SECTION SO THAT IT CAN BE EASILY CHANGED TO VARY THE AMOUNT OF FLUSH WATER. ORIGINAL LENGTH SHOULD BE 12".



TANK - 250 GAL. CAPACITY PER 40" GUTTER FLUSHED.  
- SIZE A LITTLE LARGER THAN SUGGESTED SIZE IN TABLE ABOVE

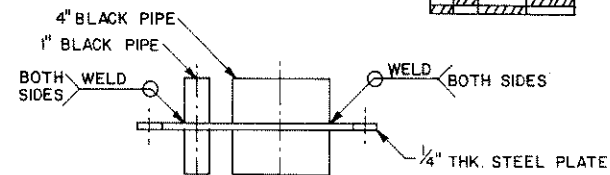
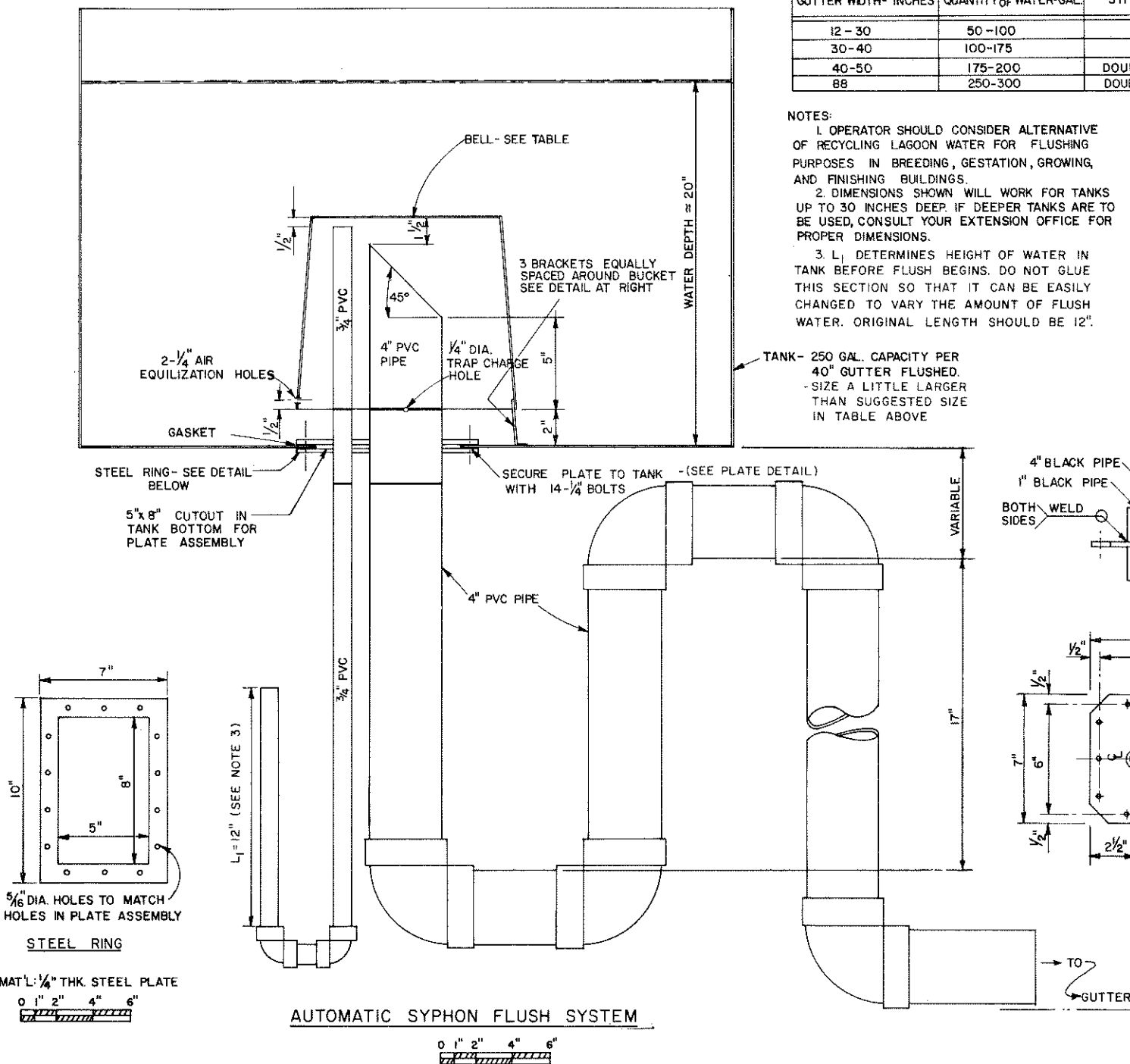
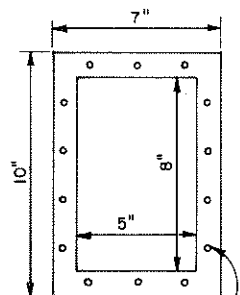
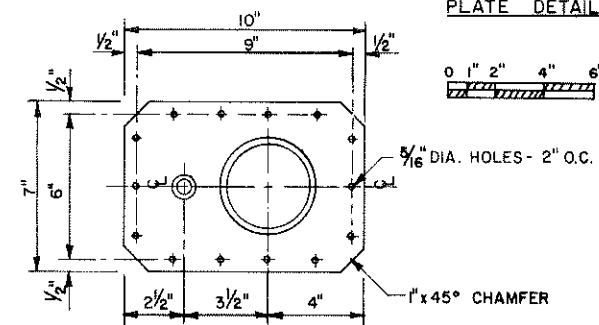


PLATE DETAIL



MAT'L: 1/4" THK STEEL PLATE

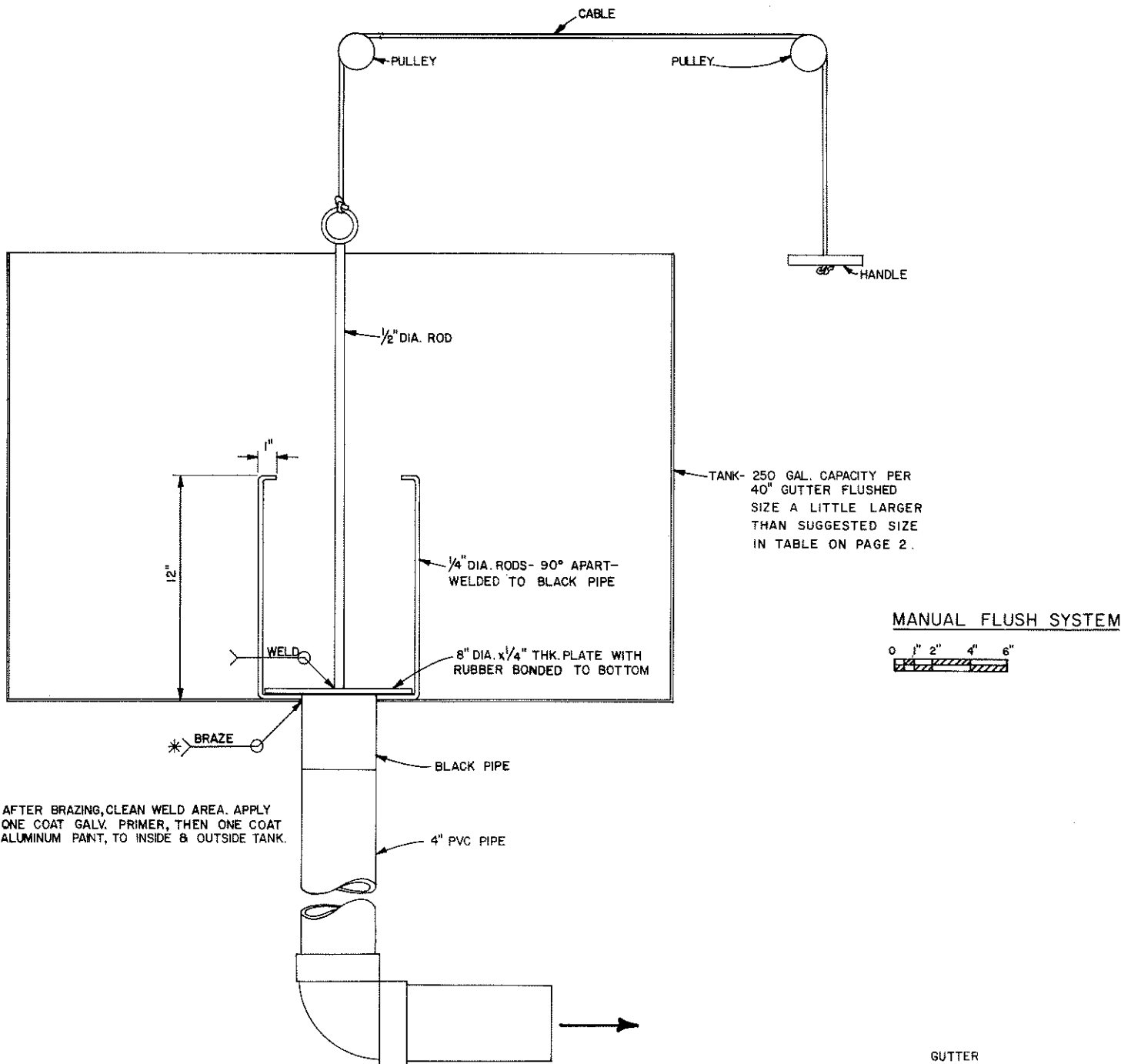


COOPERATIVE EXTENSION WORK IN AGRICULTURE AND HOME ECONOMICS

AND UNITED STATES DEPARTMENT OF AGRICULTURE COOPERATING

**FLUSH SYSTEMS**

SC 78 EX. 6349 SHEET 2 OF 3



\* AFTER BRAZING, CLEAN WELD AREA. APPLY ONE COAT GALV. PRIMER, THEN ONE COAT ALUMINUM PAINT, TO INSIDE & OUTSIDE TANK.