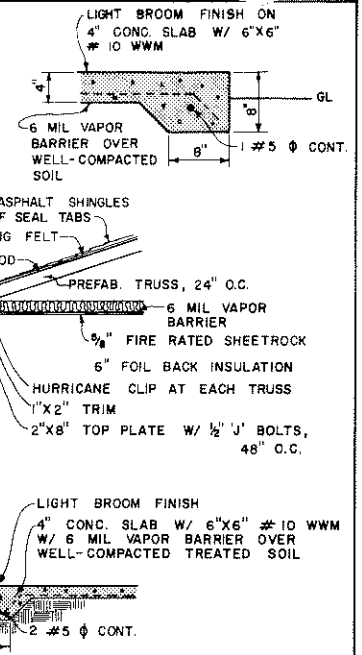
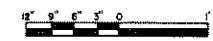


**SECTION A
SLAB EDGE DETAIL**



- 235# ASPHALT SHINGLES W/ SELF SEAL TABS
- 15# ROOFING FELT
- 1/2" C-D EXT. PLYWOOD
- PREFAB. TRUSS, 24" O.C.
- 6 MIL VAPOR BARRIER
- 5/8" FIRE RATED SHEETROCK
- 6" FOIL BACK INSULATION
- HURRICANE CLIP AT EACH TRUSS
- 1"X2" TRIM
- 2"X8" TOP PLATE W/ 1/2" J BOLTS, 48" O.C.
- 1 #5 ϕ CONT. FROM FOOTING IN FILLED CELL AS INDICATED ON PLAN
- WIRE MESH HORIZ. REINF. EVERY 3rd COURSE
- LIGHT BROOM FINISH
- 4" CONC. SLAB W/ 6"X6" #10 WWM
- 6 MIL VAPOR BARRIER OVER WELL-COMPACTED TREATED SOIL

WALL SECTION

SAFETY

ALL DOORS METAL FIRE RATED W/ FIRE RATED JAMBS AND KEYED LOCKS

⊙	1 SAFETY SHOWER UNIT
⊙	1 EYEWASH UNIT
⊕	2 WALL MOUNT 10# ABC FIRE EXT.
⊙	2 CEILING MOUNT ION TYPE DETECTORS
▽	1 INDUSTRIAL TYPE FIRST AID KIT
▽	1 "DANGER: PESTICIDE STORAGE" SIGN

ELECTRICAL

ALL ELECTRICAL SHALL BE EXPLOSION PROOF TYPE AND ALL OUTLETS WEATHER PROTECTED LIGHT FIXTURES ARE 100 WATT INCANDESCENT V.P. FIXTURES

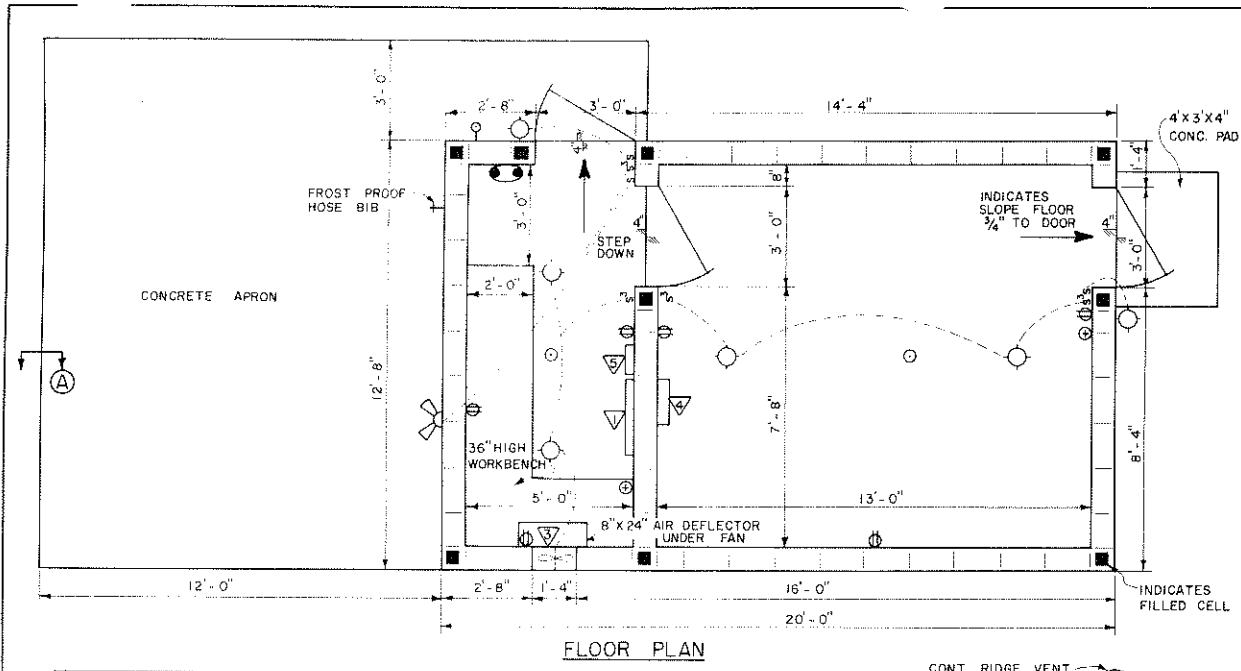
⊕	DUPLEX CONVENIENCE OUTLET
s	SINGLE POLE SWITCH
s ³	THREE WAY SWITCH
▽	500 CFM EXHAUST FAN W/ INLET GUARD AND EXHAUST DAMPER
▽	100 AMP PANEL - WEATHER PROTECTED
▽	WALL MOUNT HEATER APPROVED BY FIRE DEPT.
⊙	CEILING OUTLET
⊕	FLOOD LIGHT

COOPERATIVE EXTENSION WORK IN AGRICULTURE AND HOME ECONOMICS

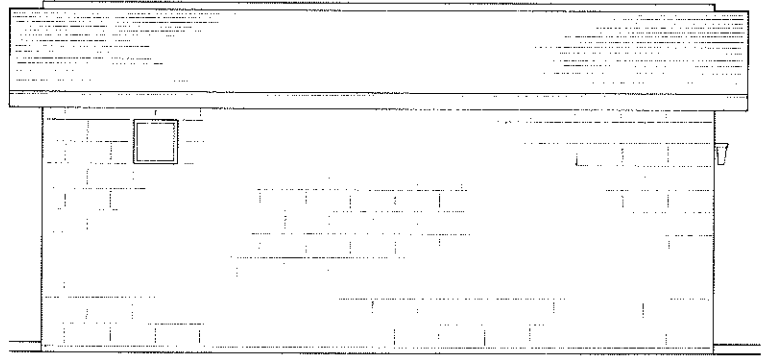
UNITED STATES DEPARTMENT OF AGRICULTURE COOPERATING

PESTICIDE STORAGE BUILDING

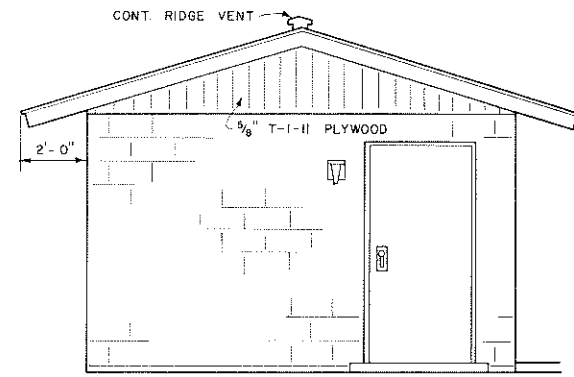
FL '83 EX. 6346 SHEET 1 OF 1



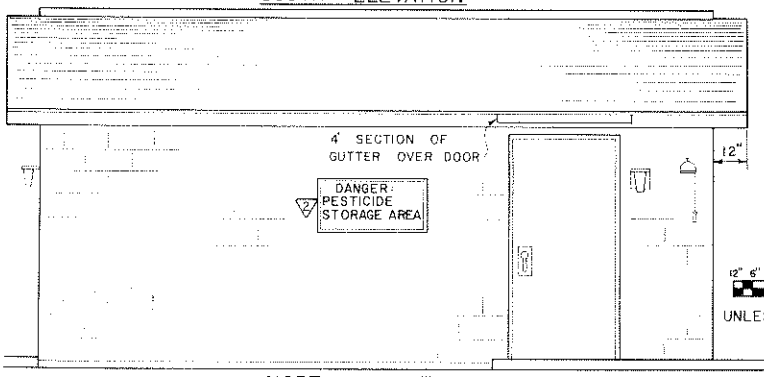
FLOOR PLAN



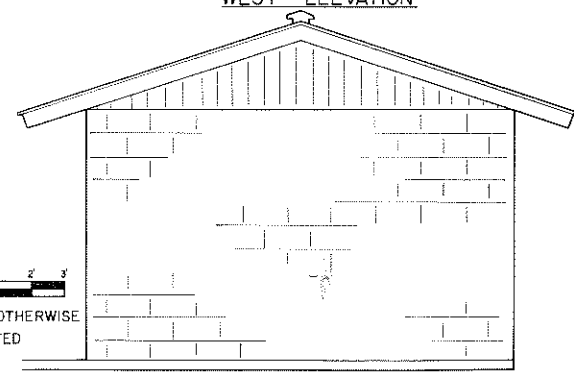
SOUTH ELEVATION



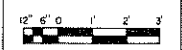
WEST ELEVATION



NORTH ELEVATION



EAST ELEVATION



UNLESS OTHERWISE NOTED