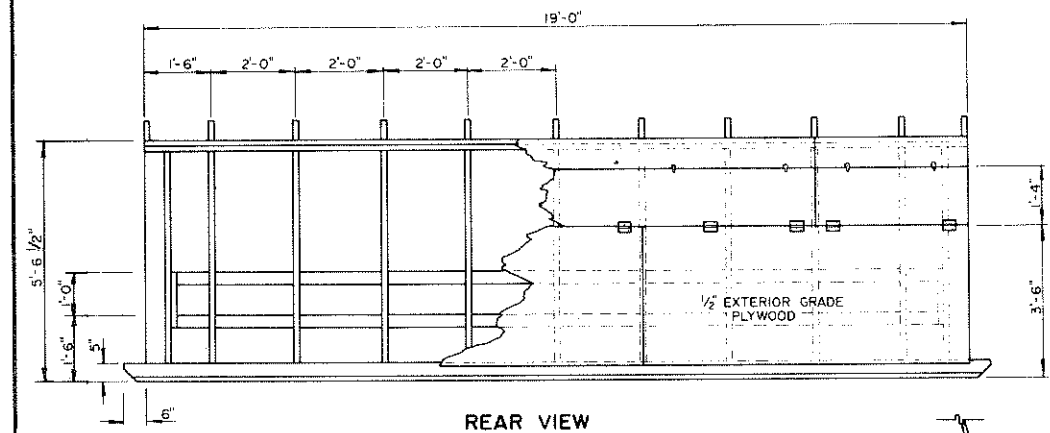
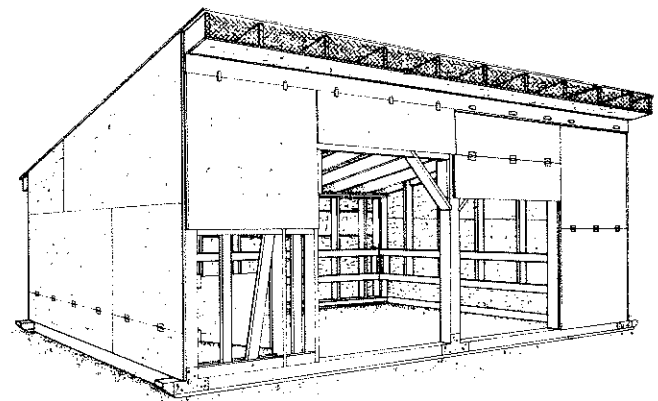


FRONT VIEW

SIDE VIEW



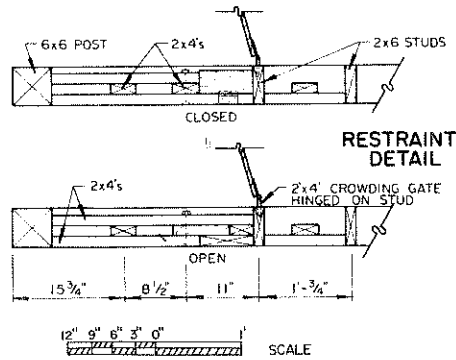
REAR VIEW



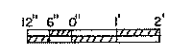
PERSPECTIVE

NOTES

1. ADJUST FRONT AND REAR HINGED PANELS ACCORDING TO WEATHER CONDITIONS.
2. FOR EXPOSED LOCATIONS PARTIAL CLOSING OF SPACE BETWEEN RAFTERS AT FRONT MAY BE NECESSARY IN WINTER.
3. PROVIDE OUTSIDE FENCED AREA FOR FEEDING AND WATERING.
4. SWING UP END PANEL THEN MOVE BUILDING TO CLEAN.
5. CAPACITY -- 8 CALVES TO ABOUT 400 LBS.
6. ANCHOR AGAINST HIGH WINDS.
7. CLOSE BOTH SIDES OF OPENINGS BETWEEN RAFTERS WITH 1/2" MESH SCREEN TO KEEP BIRDS FROM NESTING.



RESTRAINT DETAIL



SCALE -- UNLESS OTHERWISE STATED

COOPERATIVE EXTENSION WORK IN  
 AGRICULTURE AND HOME ECONOMICS

AND  
 UNITED STATES DEPARTMENT OF AGRICULTURE COOPERATING

**SUPER CALF HUTCH**

MN 81	EX. 6342	SHEET 1 OF 1
-------	----------	--------------