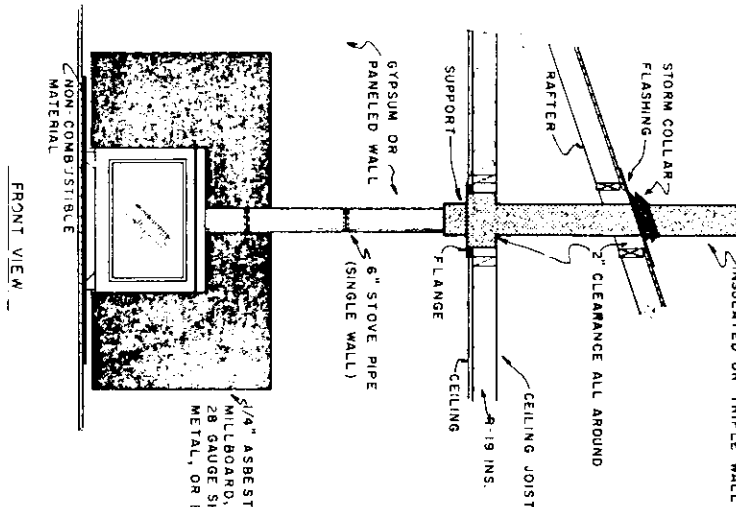
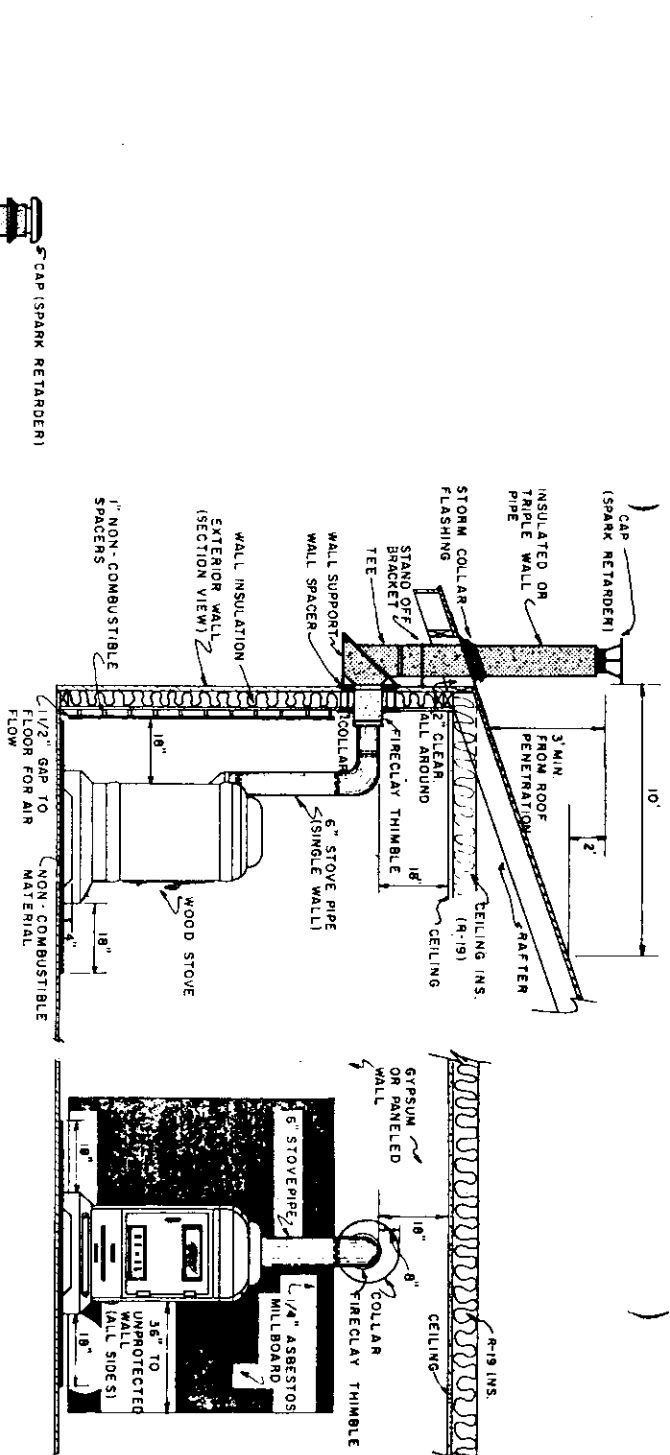


STOVE VENTILATION CHECKLIST

BE: STARTING THE FIRST FIRE IN YOUR STOVE USE THIS CHECKLIST TO BE SURE THAT IT IS SAFELY INSTALLED.

1. The stove does not have broken parts or large cracks that make it unsafe to operate.
2. A layer of sand or brick has been placed in the bottom of the fire-box if suggested by the stove manufacturer.
3. The stove is located on a non-combustible floor or an approved floor protection material is placed under the stove.
4. The stove is spaced at least 36 inches away from combustible materials. If not, fire-resistant materials are used to protect woodwork and other combustible materials.
5. Floor protection extends out 6 to 12 inches from the sides and back of the stove and 18 inches from the front where the wood is loaded.
6. Stove pipe of 22 or 24 gauge metal is used.
7. The stove pipe diameter is not reduced between the stove and the chimney flue.
8. A damper is installed in the stove pipe near the stove unless one is built into the stove.
9. The total length of stove pipe is less than 10 feet.
10. There is at least 18 inches between the top of the stove pipe and the ceiling or other combustible material.
11. The stove pipe slopes upward toward the chimney and enters the chimney higher than the outlet of the stove firebox.
12. The stove pipe does not extend into the chimney (the lining).
13. The stove pipe slopes upward toward the chimney and enters the chimney horizontally through a fire clay thimble that is higher than the outlet of the stove firebox.
14. The inside thimble diameter is the same size as the stove pipe for a snug fit.
15. A double walled vent (flashed metal thimble is used where the stove pipe goes through an interior wall).
16. The stove pipe does not pass through a floor, ceiling, convected space or enter the chimney in the attic.
17. A fire approved AIA fire metal chimney is used where a masonry chimney is not available or practical.
18. The chimney is in good repair.
19. The chimney fire flaring is not blocked.
20. The chimney live flaring and the stove pipe are clean.
21. A metal container with tight fitting lid is available for ash disposal.
22. The building official or fire inspector or has approved the installation.
23. The company installing the building has been notified of the installation.



THRU-WALL INSTALLATION

MINIMUM CLEARANCES FROM COMBUSTIBLE WALLS & CEILINGS

TYPE OF PROTECTION	STOVE TYPE		
	Radiant	Circulating	Stove Pipe
None	36"	12"	18"
1/4" Asbestos millboard, spaced out 1"	18"	6"	12"
28 gauge sheet metal, spaced out 1"	12"	4"	9"
Brick or 28 gauge sheet metal on 1/3" asbestos millboard spaced out 1"	12"	4"	9"

NOTES:
SEE DIMENSIONS FOR CHIMNEY & HEATER CLEARANCE REQUIREMENTS & MATERIALS

REVISED 4/85
As 7253

COOPERATIVE EXTENSION WORK IN AGRICULTURE AND HOME ECONOMICS

UNITED STATES DEPARTMENT OF AGRICULTURE COOPERATING

WOOD STOVE INSTALLATION PLAN

MISS. '80 EX. 6335 SHEET 1 OF 1

BASED ON: MISS. ST. UNIV. PLAN NO. 7220 A