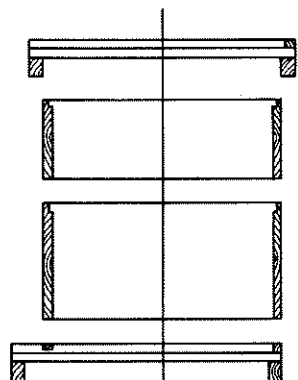
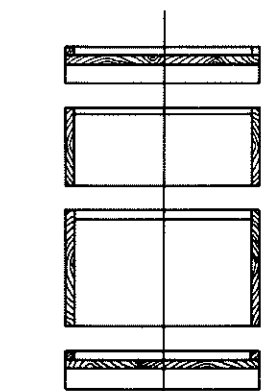


NOTE: DIAGRAM ABOVE SHOWS HOW ONE HIVE CAN BE CUT FROM A 1x12 AND A 1xB, BOTH 10' LONG, AND A 2x2 6' LONG. (1/8" FOR SAW CUT)



EXPLODED TOP: T-1, T-2, THE TWO T-3'S, T-4, AND THE TWO T-5 PIECES ARE ASSEMBLED TO FORM THE TOP.

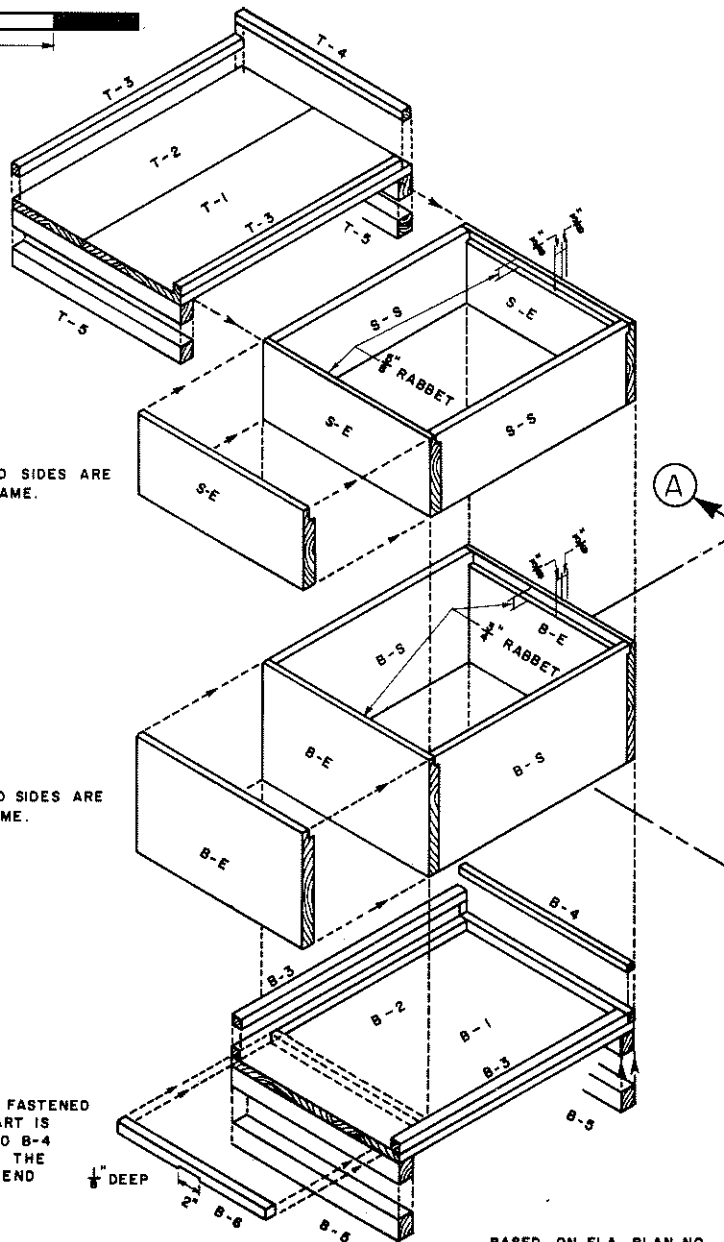
SECTION A



SHALLOW SUPER
EXPLODED END VIEW: ENDS AND SIDES ARE ASSEMBLED INTO ONE SOLID FRAME.

SECTION B

EXPLODED BOTTOM: B-1 AND B-2 ARE FASTENED AT EACH END TO A B-3 PART. A B-3 PART IS ATTACHED TO EACH SIDE, BUTTING UP TO B-4 AT THE END. B-6 IS LOCATED BETWEEN THE B-3'S AND DIRECTLY BELOW BROOD BODY END AS SHOWN.



| MEANING OF SYMBOLS | |
|--------------------|---------------|
| B | BOTTOM |
| T | TOP |
| -E | END |
| -S | SIDE |
| B- | BROOD BODY |
| S- | SHALLOW SUPER |

| SCHEDULE OF PARTS | | |
|-------------------|--------|------------------------|
| SYMBOL | AMOUNT | DIMENSIONS (INCHES) |
| T-1 | 1 | 3/4 x 9 5/8 x 22 3/8 |
| T-2 | 1 | 3/4 x 6 5/8 x 22 3/8 |
| T-3 | 2 | 3/4 x 3/4 x 21 5/8 |
| T-4 | 1 | 3/4 x 3/4 x 16 1/4 |
| T-5 | 2 | 1 1/8 x 1 1/2 x 16 1/4 |
| S-S | 2 | 3/4 x 6 5/8 x 19 1/8 |
| S-E | 2 | 3/4 x 6 5/8 x 16 1/4 |
| B-S | 2 | 3/4 x 9 5/8 x 19 1/8 |
| B-E | 2 | 3/4 x 9 5/8 x 16 1/4 |
| B-1 | 1 | 3/4 x 9 5/8 x 22 1/2 |
| B-2 | 1 | 3/4 x 6 5/8 x 22 1/2 |
| B-3 | 2 | 3/4 x 3/4 x 21 3/4 |
| B-4 | 1 | 3/4 x 3/4 x 16 1/4 |
| B-5 | 2 | 1 1/8 x 1 1/2 x 16 1/4 |
| B-6 | 1 | 3/4 x 3/4 x 14 3/4 |



COOPERATIVE EXTENSION WORK IN AGRICULTURE AND HOME ECONOMICS

AND UNITED STATES DEPARTMENT OF AGRICULTURE COOPERATING

LOW COST BEEHIVE

USDA 180 EX. 6324 SHEET 1 OF 1