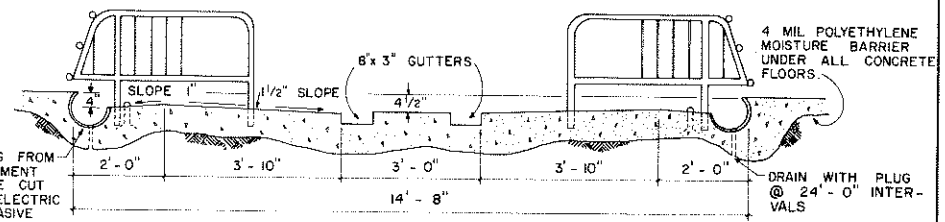
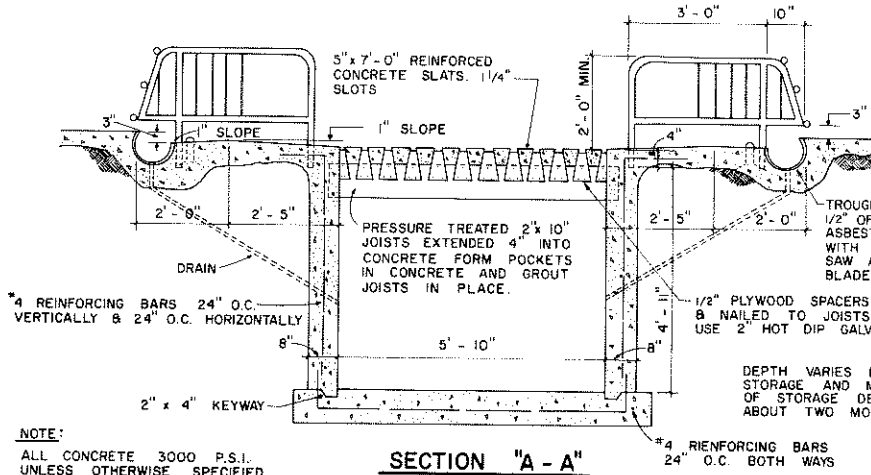


NOTE: DIMENSIONS OF STALL HARDWARE ARE NOT CRITICAL. SEE MANUFACTURER



ALTERNATE SECTION "A - A"
WITH SHALLOW GUTTER

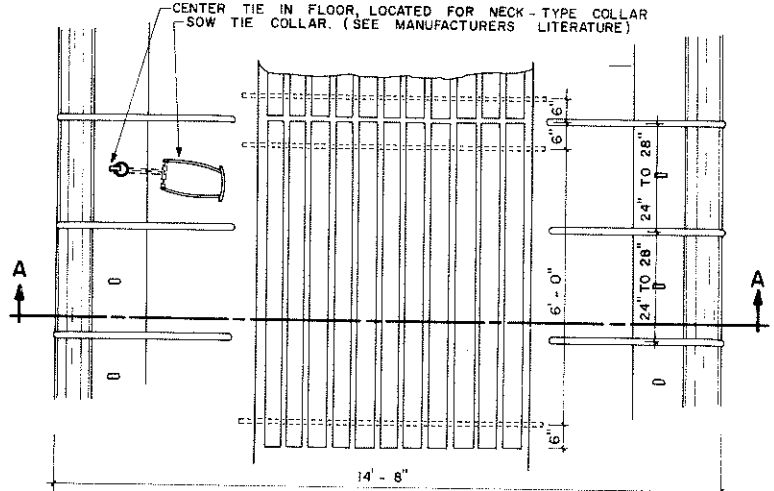
NOTE:
ALL CONCRETE 3000 P.S.I.
UNLESS OTHERWISE SPECIFIED

SECTION "A - A"

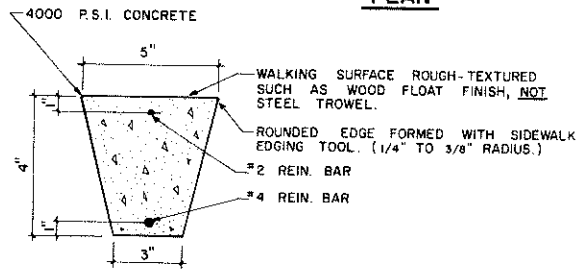
DEPTH VARIES DEPENDING ON REQUIRED LIQUID MANURE STORAGE AND METHOD OF MANURE REMOVAL. 4'-6" OF STORAGE DEPTH WILL ACCUMULATE MANURE FOR ABOUT TWO MONTHS.

NOTES:

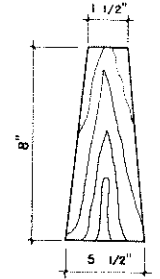
- USE NO BEDDING WITH SUNKEN FEED TROUGH.
- TYING SOWS**
- 1. UNBRED GILTS HAVE NOT HAD EXPERIENCE OF TIGHT CONFINEMENT AND SHOULD NOT BE TIED.
- 2. THIS PLAN SHOWS THE NECK-TYPE METAL COLLAR TIE. SOFT COLLAR STRAPS (LEATHER ETC.) ARE NOT SUITABLE AS THEY MUST BE TOO TIGHT IN ORDER TO HOLD SOWS SECURELY.
- 3. SOME OPERATORS PREFER TYING WITH A BODY STRAP JUST BEHIND THE SHOULDER. RELOCATE FLOOR TIE RING AS PER MANUFACTURER'S RECOMMENDATIONS.
- 4. SOME SOWS DO NOT ACCEPT TIES, SO PROVIDE OTHER MEANS OF CONFINEMENT.
- FEEDING AND WATERING**
- NO WATER BOWLS REQUIRED WITH GESTATION TIE STALLS. FEED TROUGH HOLDS A WATER SUPPLY WHICH IS CONTROLLED BY GUARDED FLOAT VALVES AT 24'-0" INTERVALS APPROXIMATELY.
- TO FEED**
- 1. MEASURE AND PLACE FEED TO EACH SOW. FEED IS WETTED BY DRINKING WATER REMAINING IN TROUGH.
- 2. NOTE THAT TROUGH BOTTOM SHOULD BE LEVEL TO SUPPLY EQUAL WATER TO EACH SOW.



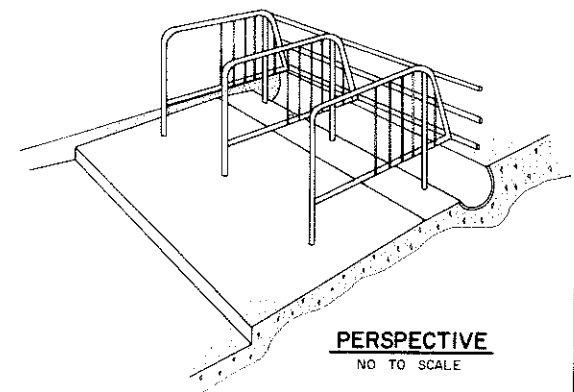
PLAN



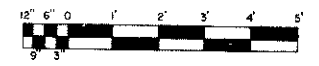
SLAT DETAIL
TYPICAL SECTION
NOT TO SCALE



1/2" PLYWOOD SPACER
NOT TO SCALE



PERSPECTIVE
NO TO SCALE



SCALE 1/2" = 1'-0"
UNLESS OTHERWISE NOTE

COOPERATIVE EXTENSION WORK IN
AGRICULTURE AND HOME ECONOMICS

AND
UNITED STATES DEPARTMENT OF AGRICULTURE COOPERATING

GESTATION TIE STALLS
(FOR NO BEDDING)

USDA '79 EX. 6322 SHEET 1 OF 1