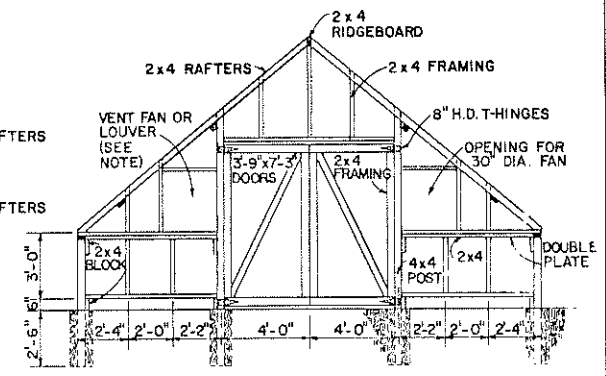
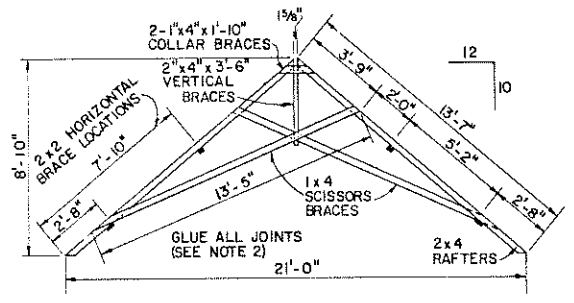


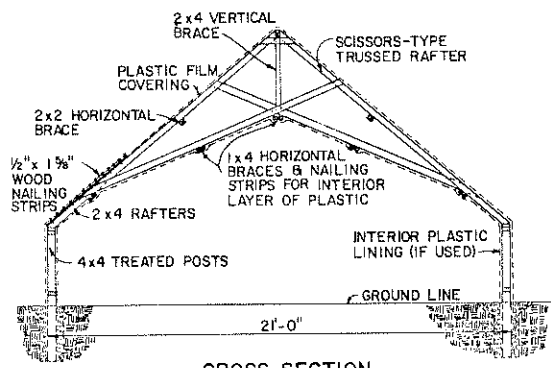
SIDE VIEW OF FRAMING



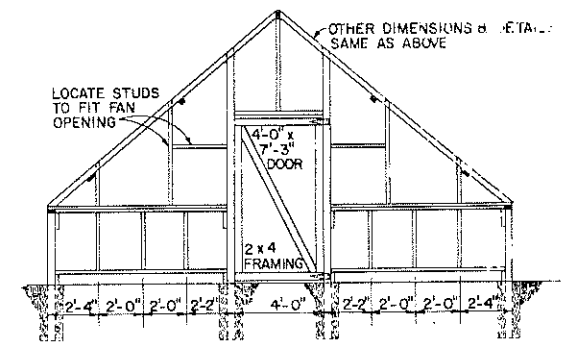
END VIEW OF FRAMING



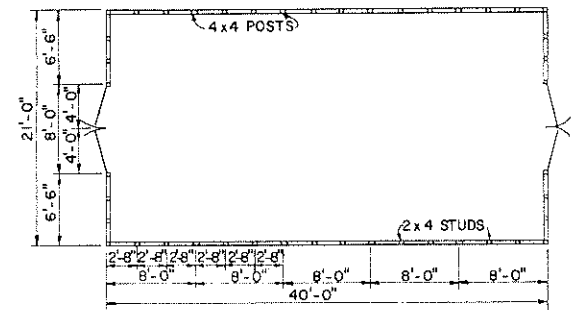
RAFTER DETAIL



CROSS SECTION



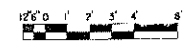
ALTERNATE END VIEW



FLOOR PLAN



- NOTES:**
1. IF 30" FAN FRAMES ARE TOO LARGE FOR OPENING PROVIDED, LOWER PLATE AND MOVE STUD AS REQUIRED, OR USE THREE 24" FANS AND PLACE ONE IN GABLE OVER DOORS, OR MAKE DOORS NARROWER. (ALSO SEE ALTERNATE END VIEW OF FRAMING)
 2. ALL JOINTS GLUED (USE A GOOD WATERPROOF WOOD GLUE) AND NAILED WITH 6-PENNY GALVANIZED SERRATED NAILS.
 3. CONSULT LOCAL HEALTH AND BUILDING CODE AUTHORITIES BEFORE STARTING CONSTRUCTION.



UNLESS OTHERWISE NOTED

COOPERATIVE EXTENSION WORK IN AGRICULTURE AND HOME ECONOMICS			
AND UNITED STATES DEPARTMENT OF AGRICULTURE COOPERATING			
GREENHOUSE SCISSORS TRUSS			
VA	78	6311	SHEET 1 OF 1