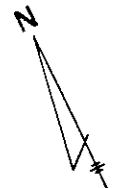


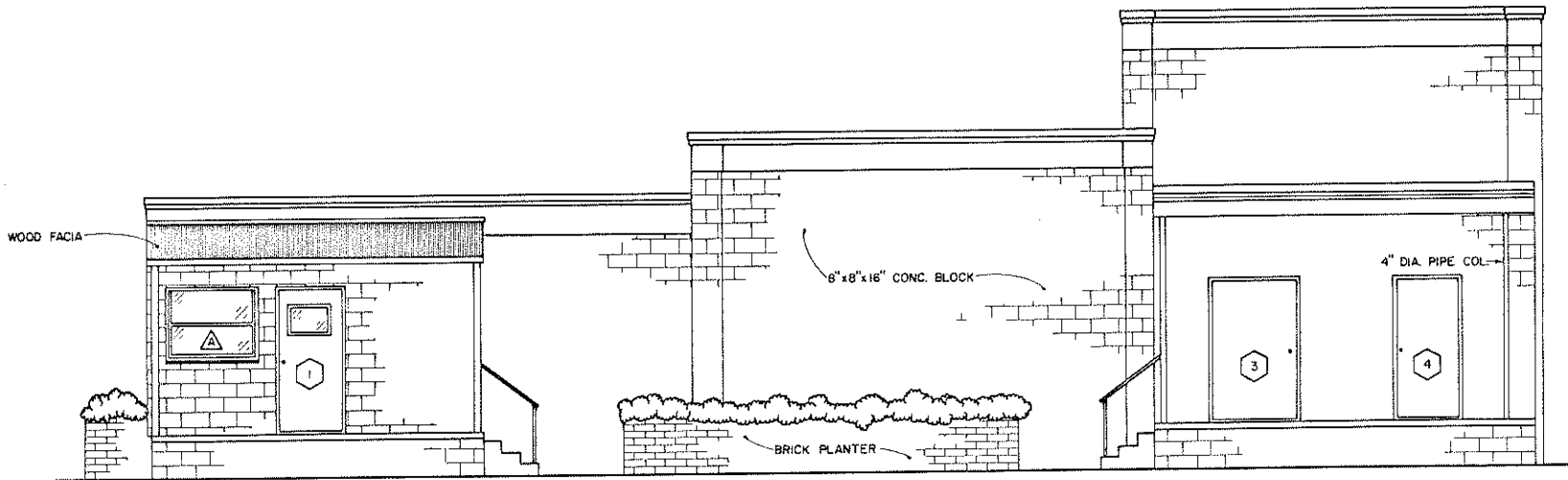
**FLOOR PLAN**

SCALE: 1/2" = 6'-0" 1" = 12'-0"



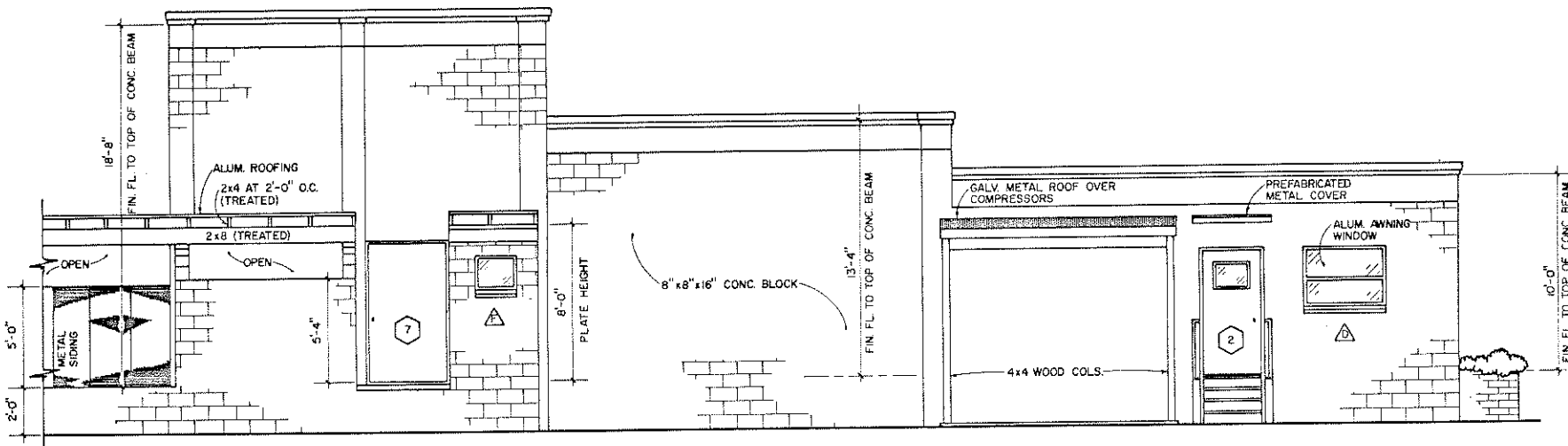
COOPERATIVE EXTENSION WORK IN AGRICULTURE AND HOME ECONOMICS		
AND UNITED STATES DEPARTMENT OF AGRICULTURE COOPERATING		
<b>SLAUGHTER HOUSE</b>		
FLA. '78	6307	SHEET 1 OF 5

BASED ON: UNIVERSITY OF FLORIDA PLAN NO. FLA. 330



**SOUTH ELEVATION**

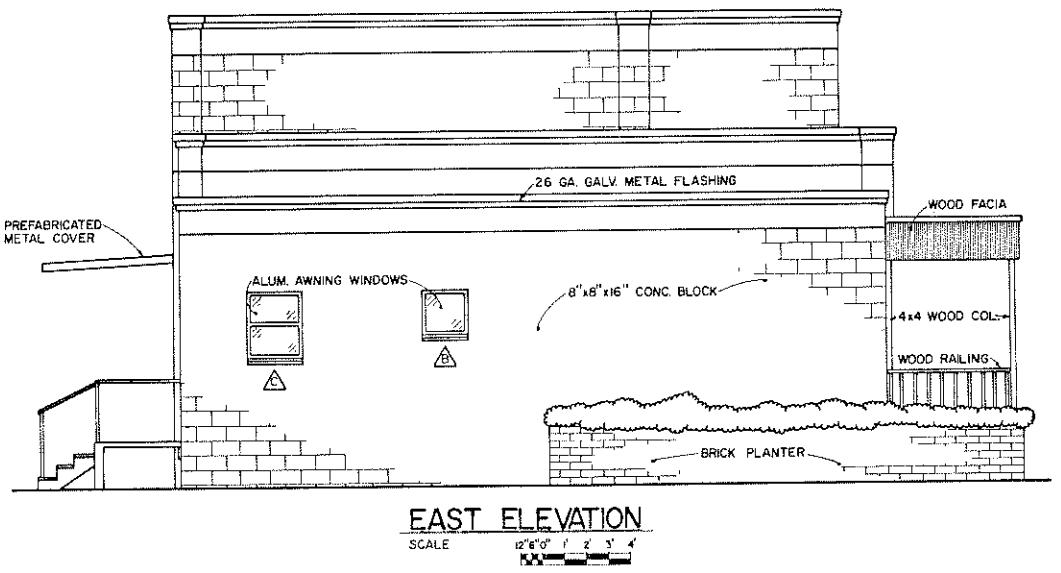
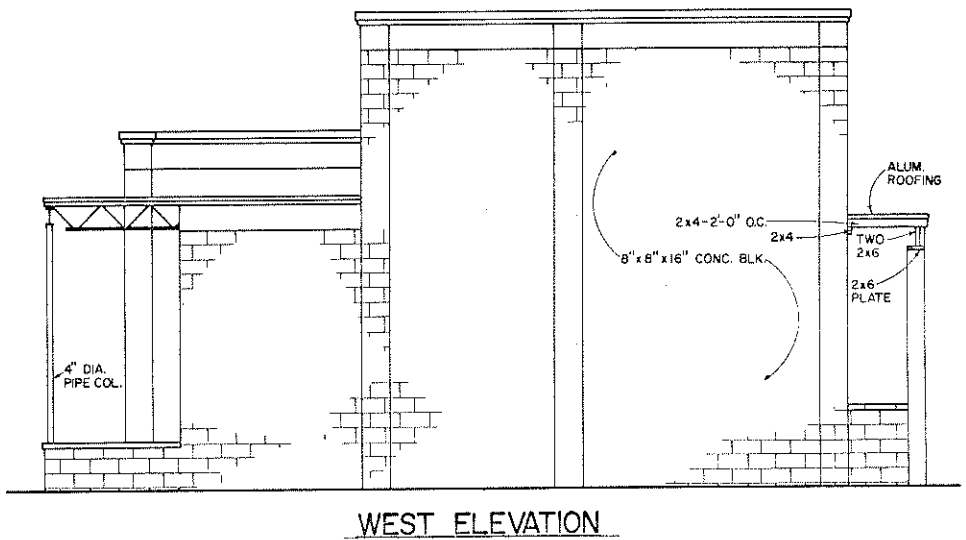
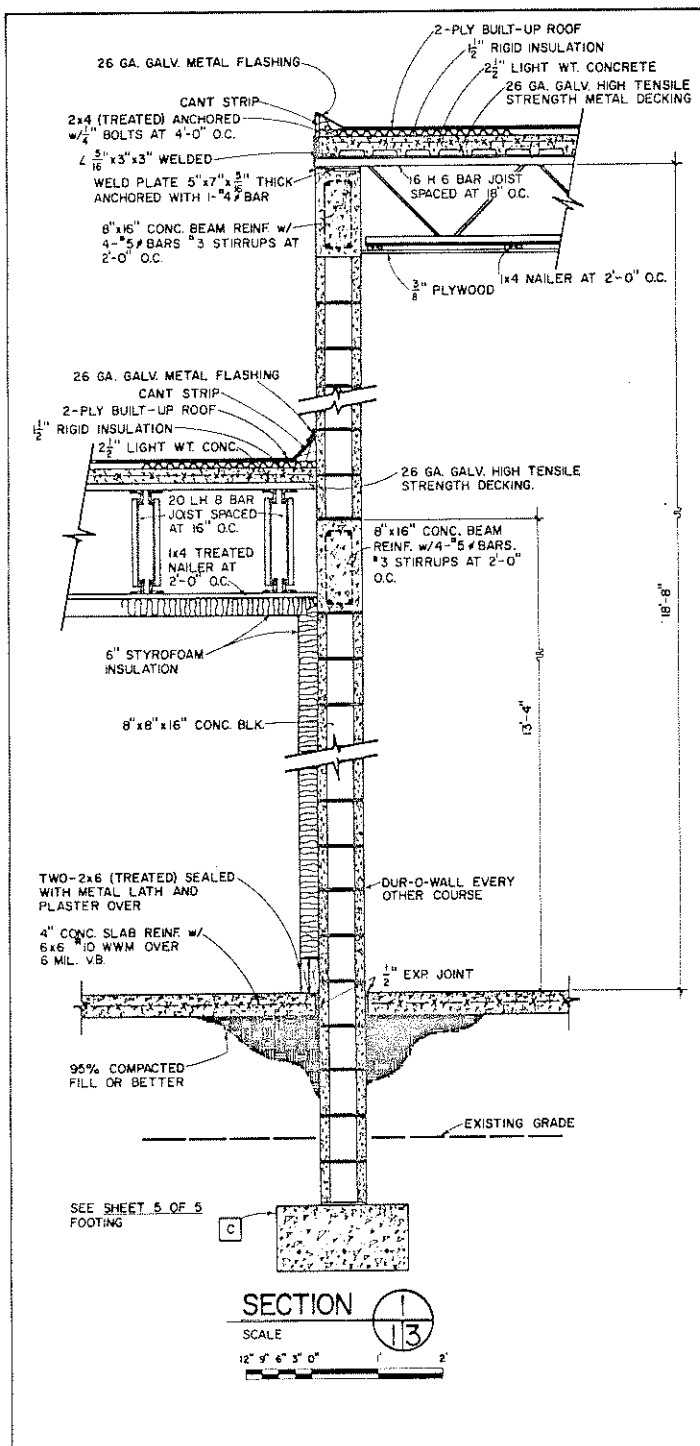
SCALE:



**NORTH ELEVATION**

SCALE: 1/2" = 6'-0"

COOPERATIVE EXTENSION WORK IN AGRICULTURE AND HOME ECONOMICS		
AND UNITED STATES DEPARTMENT OF AGRICULTURE COOPERATING		
SLAUGHTER HOUSE		
FLA. '78	6307	SHEET 2 OF 5



COOPERATIVE EXTENSION WORK IN AGRICULTURE AND HOME ECONOMICS		
AND UNITED STATES DEPARTMENT OF AGRICULTURE COOPERATING		
SLAUGHTER HOUSE		
FLA.	'78	6307
		SHEET 3 OF 5

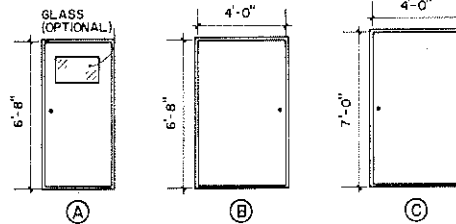
## FINISH SCHEDULE

ROOM	FLOOR	WALLS	CEILING	REMARKS
SALES	INDOOR-OUTDOOR CARPET	PREFINISHED PANELLING	ACOUSTICAL TILE	
PREPARATION	$\frac{1}{8}$ " VINYL TILE	BLOCK-PAINTED	ACOUSTICAL TILE	WALLS-PAINT SHALL BE (1) COAT PRIMER + (2) COATS EPOXY TO 6'-0" REMAINING WALL (2) COATS LATEX
STORAGE #1	CONCRETE-SEE NOTE	BLOCK-PAINTED	PAINT w/2-COATS LATEX	WALLS-PAINT SHALL BE (2) COATS LATEX
BATH #1	$\frac{1}{8}$ " VINYL TILE	BLOCK-PAINTED	ACOUSTICAL TILE	WALLS-PAINT SHALL BE (2) COATS LATEX
OFFICE	INDOOR-OUTDOOR CARPET	PREFINISHED PANELLING	ACOUSTICAL TILE	
LOUNGE	INDOOR-OUTDOOR CARPET	PREFINISHED PANELLING	ACOUSTICAL TILE	
FREEZER	CONCRETE-SEE NOTE	PLASTER OVER INSUL.	PLASTER OVER INSUL.	
COOLER	CONCRETE-SEE NOTE	PLASTER OVER INSUL.	PLASTER OVER INSUL.	
PRE-COOLER	CONCRETE-SEE NOTE	PLASTER OVER INSUL.	PLASTER OVER INSUL.	
INSPECTION	CONCRETE-SEE NOTE	BLOCK-PAINTED	PAINT w/2-COATS LATEX	WALLS-PAINT SHALL BE (1) COAT PRIMER + (2) COATS EPOXY TO 6'-0" REMAINING WALL (2) COATS LATEX
OFFAL	CONCRETE-SEE NOTE	BLOCK-PAINTED	PAINT w/2-COATS LATEX	WALLS-PAINT SHALL BE (1) COAT PRIMER + (2) COATS EPOXY TO 6'-0" REMAINING WALL (2) COATS LATEX
STORAGE #2	CONCRETE-SEE NOTE	BLOCK-PAINTED	PAINT w/2-COATS LATEX	WALLS-PAINT SHALL BE (2) COATS LATEX
BATH #2	$\frac{1}{8}$ " VINYL TILE	BLOCK-PAINTED	ACOUSTICAL TILE	WALLS-PAINT SHALL BE (2) COATS LATEX

NOTE: CONCRETE SLAB-SHALL BE FINISHED WITH ANTI-HYDRO ADMIXTURE OR EQUAL TO CREATE A HARD, NON-DUSTING FINISH.

## WINDOW SCHEDULE

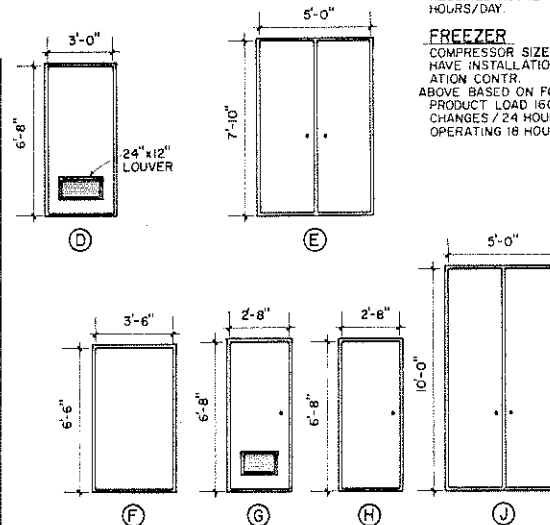
MARK	SIZE	DESCRIPTION	REMARKS
△	BUCK 52" x 37 $\frac{1}{4}$ "	ALUM. AWNING	
△	BUCK 25 $\frac{3}{8}$ " x 24 $\frac{7}{8}$ "	ALUM. AWNING	FROSTED GLASS
△	BUCK 25 $\frac{3}{8}$ " x 37 $\frac{1}{4}$ "	ALUM. AWNING	
△	BUCK 52" x 37 $\frac{1}{4}$ "	ALUM. AWNING	
△	48" x 36"	FIXED GLASS	SHATTER PROOF
△	BUCK 25 $\frac{3}{8}$ " x 24 $\frac{7}{8}$ "	ALUM. AWNING	FROSTED GLASS



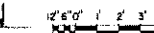
NOTE: ALL WINDOWS TO HAVE SCREENS.

## DOOR SCHEDULE

DOOR MARK	DESCRIPTION				MATERIAL	REMARKS
	ELEV.	WIDTH	HGT.	THICK.		
①	A	3'-0"	6'-8"	$\frac{3}{4}$ "	SOLID CORE	w/WINDOW w/SCREEN DOOR
②	A	3'-0"	6'-8"	$\frac{3}{4}$ "	SOLID CORE	w/WINDOW w/SCREEN DOOR
③	B	4'-0"	6'-8"	$\frac{3}{4}$ "	SOLID CORE	w/SCREEN DOOR
④	A	3'-0"	6'-8"	$\frac{3}{4}$ "	SOLID CORE	
⑤	A	3'-0"	6'-8"	$\frac{3}{4}$ "	SOLID CORE	
⑥	U	5'-0"	10'-0"	1 $\frac{1}{2}$ "	COOLER, TRACK DOOR	DAECO, OR EQUAL
⑦	C	4'-0"	7'-0"	$\frac{3}{4}$ "	SOLID CORE, AUTO CLOSE	w/SCREEN DOOR
⑧	U	5'-0"	10'-0"	1 $\frac{1}{2}$ "	COOLER, TRACK DOOR	DAECO, OR EQUAL
⑨	E	5'-0"	7'-10"	1 $\frac{1}{2}$ "	COOLER, TRACK DOOR	DAECO, OR EQUAL
⑩	F	3'-6"	6'-6"	$\frac{3}{8}$ "	FREEZER DOOR	DAECO, OR EQUAL
⑪	D	3'-0"	6'-8"	$\frac{3}{8}$ "	HOLLOW CORE	
⑫	D	3'-0"	6'-8"	$\frac{3}{8}$ "	HOLLOW CORE	
⑬	G	2'-8"	6'-8"	$\frac{3}{8}$ "	HOLLOW CORE	
⑭	D	3'-0"	6'-8"	$\frac{3}{8}$ "	HOLLOW CORE	
⑮	H	2'-8"	6'-8"	$\frac{3}{4}$ "	SOLID CORE, AUTO CLOSE	



DOOR ELEVATION



### NOTES:

- RAILS—MINIMUM DISTANCE BETWEEN RAILS AND ANY PERMANENT PART OF THE BUILDING TO BE 24".
- WATER HEATER—THE HEATER SHALL BE GAS OR ELEC. w/100 GAL. STORAGE CAPACITY WITH A 100% RECOVERY RATE AT 165 G.P.H.
- LIGHTS—FLUORESCENT LIGHTS SHALL BE 2 TUBE 58" x 40 W INCANDESCENT LIGHTS SHALL BE 60 W, LIGHT FIXTURES IN ROOMS WHERE MEAT IS HANDLED SHOULD BE PROVIDED WITH A PROTECTIVE SHIELD, IN ADDITION SHATTER PROOF BULBS SHALL BE INSTALLED, TO PRECLUDE CONTAMINATION OF PRODUCT WITH BROKEN GLASS.
- FLOOR SLOPE—UNLESS OTHERWISE STATED ALL SLOPES SHALL BE  $\frac{1}{4}$ " FOOT TO DRAINS.
- ELECTRICAL OUTLET—ALL ELECTRICAL OUTLETS TO BE WP TYPE w/SELF-CLOSING COVERS.
- ILLUMINATION—ILLUMINATED SPACES TO COMPLY w/U.S. DEPT. OF AGRICULTURE HANDBOOK NO. 191 MIN. ILLUMINATION IN ANY SPACE TO BE 20 FOOT CANDLES.
- COVES—SUITABLE COVES TO FACILITATE SANITARY MAINTENANCE SHALL BE INSTALLED AT JUNCTIONS BETWEEN WALLS & FLOORS.

### EQUIPMENT LIST

#### PRODUCE AREA

- 1) COUNTER SCALES
- 2) GRINDER
- 3) ELEC. SAW & HAND SAW
- 4) CUBING MACH.
- 5) CUTTING TABLES
- 6) SUITABLE CONTAINERS FOR HANDLING TRIMMINGS GROUND BEEF & CUTS
- 7) PATTY MACHINE

#### FREEZER

- 1) FREEZER CARTS & RACKS

#### KILL FLOOR

- 1) HOIST FOR LIVE ANIMAL
- 2) HOIST FOR CARCASS
- 3) GRADLE OR HIDE PULLER OR BOTH
- 4) GUT BUGGY
- 5) BUILT-IN HEAD WASHER
- 6) COMMERCIAL STUNNER IF PLAN TO SAVE HEAD
- 7) TRACK SCALE
- 8) HAND SAW, KNIVES, CLEAVER, HOOKS, TROLLEYS
- 9) BEEF TREE
- 10) TREE HOOKS (HANG LIVER, HEARTS, ETC.)
- 11) TUBS FOR EDIBLE MATERIAL—HEART, LIVER, ETC.
- 12) SPLITTING SAW FOR SPLITTING CARCASS
- 13) HEAVY CHAIN FOR SHACKLING ANIMALS
- 14) HIGH PRESSURE HOSES

### COMPRESSORS

#### COOLERS

USE 1-7 $\frac{1}{2}$  HP COMP OR 2-5 HP UNITS w/2 STAGE THERMOSTAT—SUGGEST USE OF PLASTI COILS w/GRAVITY AIR CIRCULATION HAVE INSTALLATION DESIGNED BY COMPETENT REFRIGERATION ENGINEER OR REFRIGERATOR CONTR.

ABOVE BASED ON FOLLOWING DATA:  
PRODUCT LOAD OF 7500 LBS. (DAILY) OR 15 500 LB. CARCASSES ENTERING ANIMAL BODY TEMP. 105° F. AMBIENT TEMP. 55° F.; COOLER TEMP 35° F.; 5.5 AIR-CHANGES/24 HOURS; REQUIRED HOURLY COOLING CAPACITY OF 44,000 BTU; COMPRESSOR OPERATING 16 HOURS/DAY.

#### FREEZER

COMPRESSOR SIZE 5 HP MAY USE 2-3 HP UNITS w/2 STAGE THERMOSTAT. HAVE INSTALLATION DESIGNED BY COMPETENT REFRIGERATION ENGINEER OR REFRIGERATOR CONTR.

ABOVE BASED ON FOLLOWING DATA:  
PRODUCT LOAD 1600 LBS. (DAILY); PRODUCT TEMP ENTERING FREEZER 50° F.; 15 AIR CHANGES / 24 HOURS; REQUIRED HOURLY COOLING CAPACITY 21,700 BTU; COMPRESSOR, OPERATING 18 HOURS/DAY.

### LEGEND

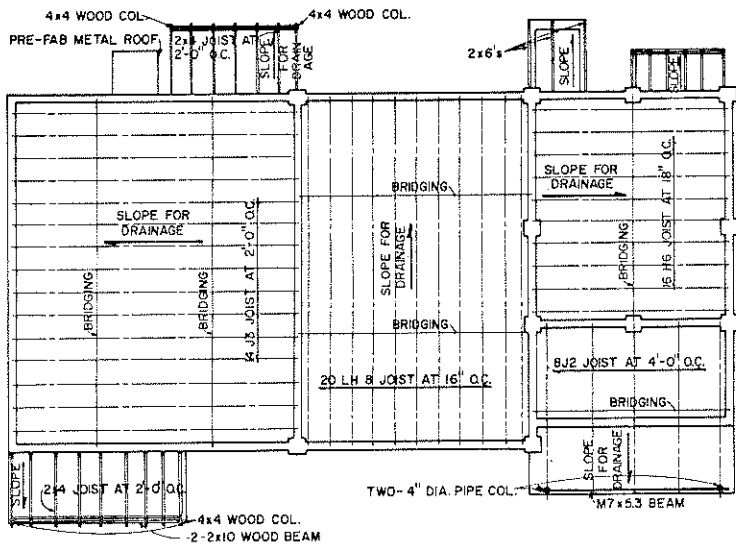
- ② DETAIL NUMBER
- ③/5 SHEET NO. WHERE DETAIL IS FOUND
- ③/5 SHEET NO. WHERE DETAIL IS CUT
- ④ DOOR NUMBER
- △ WINDOW TYPE

COOPERATIVE EXTENSION WORK IN  
AGRICULTURE AND HOME ECONOMICS

AND  
UNITED STATES DEPARTMENT OF AGRICULTURE COOPERATING

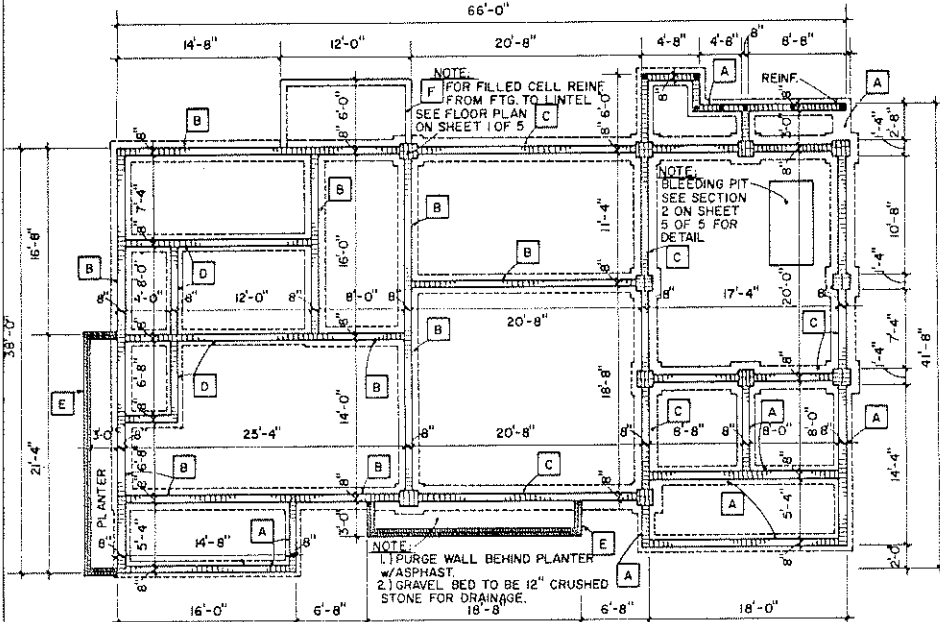
SLAUGHTER HOUSE

FLA. '78 6307 SHEET 4 OF 5



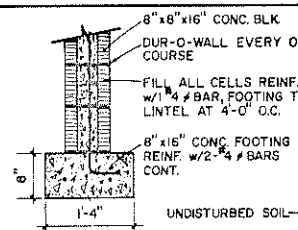
**ROOF FRAMING PLAN**

SCALE: 1/2" = 1'-0"

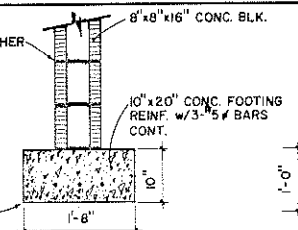


**FOUNDATION PLAN**

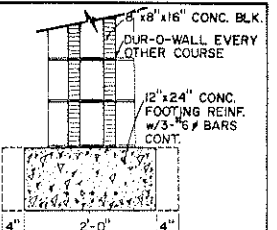
**NOTE:**  
 1. PURGE WALL BEHIND PLANTER w/ ASPHALT.  
 2. GRAVEL BED TO BE 12" CRUSHED STONE FOR DRAINAGE.  
 3. FILL ALL CELLS w/ CONC. IN DOCK AREA & KNOCKING PEN ONLY. REINF. w/ 1-4 # BAR AT 4'-0" O.C. IN LOADING DOCK, B WHERE SHADED IN KNOCKING PEN.



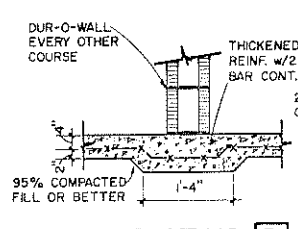
**FOOTING A**



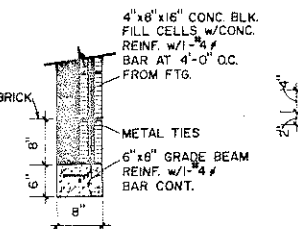
**FOOTING B**



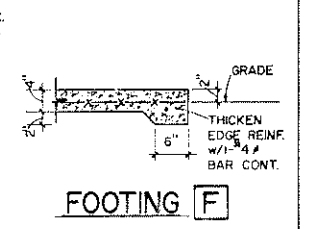
**FOOTING C**



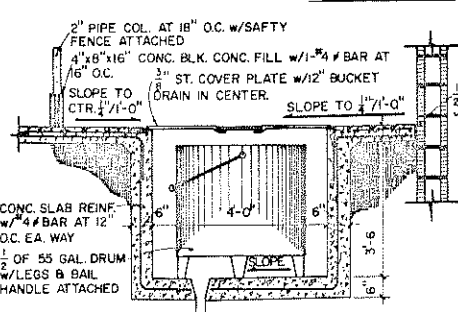
**FOOTING D**



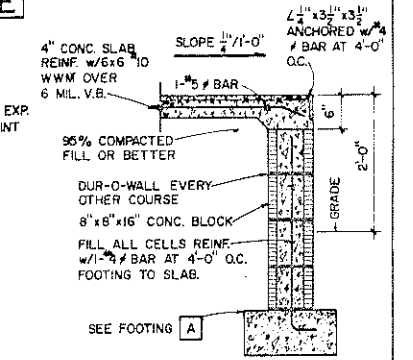
**FOOTING E**



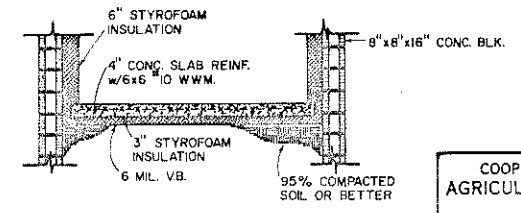
**FOOTING F**



**SECTION 2**  
SCALE 1/15



**SECTION 3**  
SCALE 1/15



**SECTION 4**  
SCALE 1/15

COOPERATIVE EXTENSION WORK IN AGRICULTURE AND HOME ECONOMICS		
AND UNITED STATES DEPARTMENT OF AGRICULTURE COOPERATING		
<b>SLAUGHTER HOUSE</b>		
FLA. '78	6307	SHEET 5 OF 5