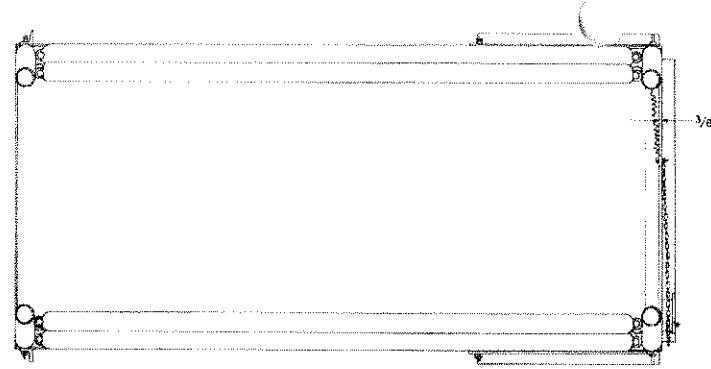
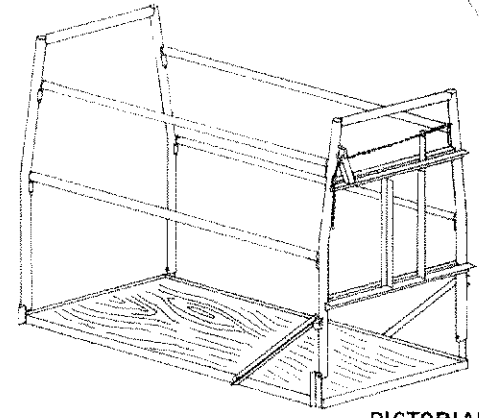


CHAIN CATCH DETAILS



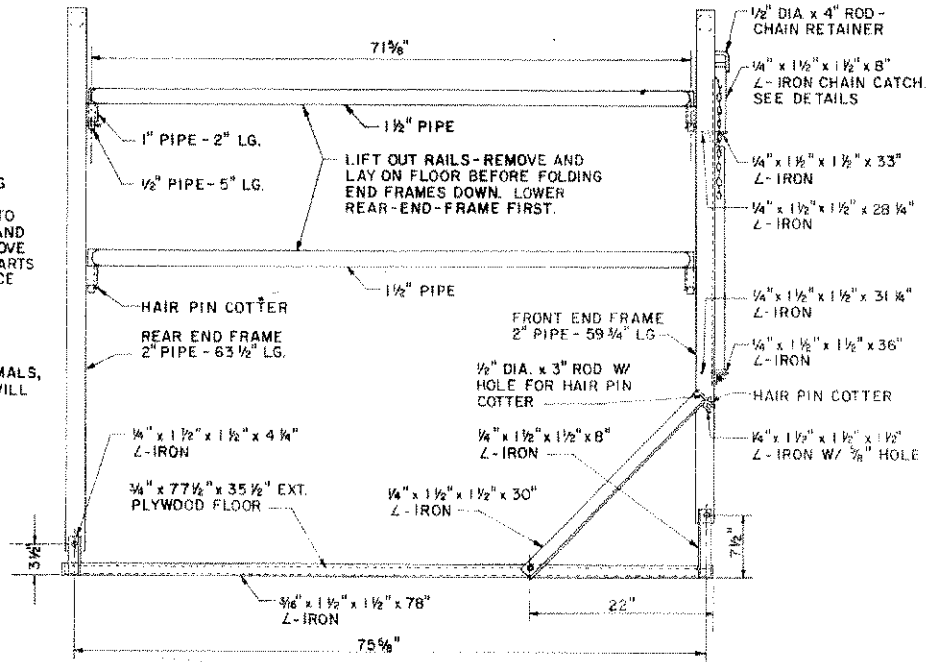
SECTION A-A



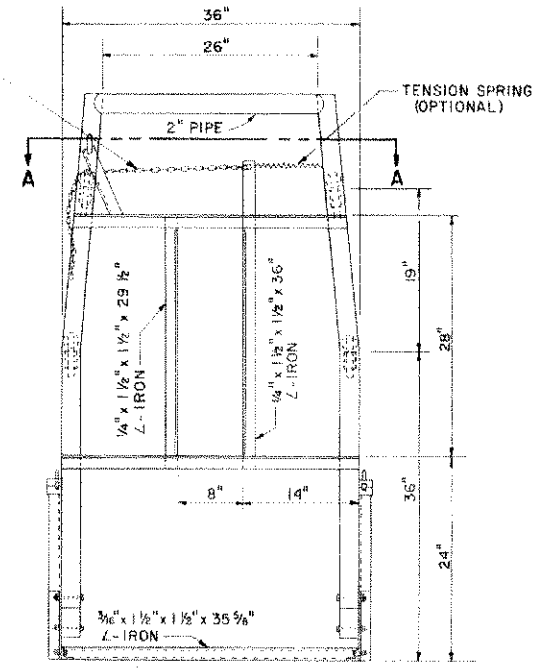
PICTORIAL

STRAIGHT LINK MACHINE CHAIN - 1/0, 0.177 DIA. LINK, INSIDE LENGTH 0.74" OR EQUIVALENT SHORT LINK WELDED CHAIN

- NOTES:**
- ③ - INDICATES PIVOTING POINTS - FASTEN WITH 1/2" BOLTS, USE 2 NUTS TO LOCK BOLTS IN PLACE AND TO ALLOW PARTS TO MOVE FREELY. ALL OTHER PARTS TO BE WELDED IN PLACE AS SHOWN.
 - THIS CHUTE SIZED FOR 1400 LB. DAIRY COW. FOR OTHER SIZED ANIMALS, CERTAIN DIMENSIONS WILL NEED TO BE CHANGED.



SIDE VIEW



END VIEW

COOPERATIVE EXTENSION WORK IN AGRICULTURE AND HOME ECONOMICS		
AND UNITED STATES DEPARTMENT OF AGRICULTURE COOPERATING		
DAIRY COW TRIMMING CHUTE (PORTABLE)		
W. VA. '78	6303	SHEET 1 OF 1