

PLAN VIEW

NOTE:
EQUIP ALL BINS WITH AERATION
TOTAL STORAGE CAPACITY - 100,000 BU.

SCALE:
COOPERATIVE EXTENSION WORK IN
AGRICULTURE AND HOME ECONOMICS

AND
UNITED STATES DEPARTMENT OF AGRICULTURE COOPERATING

GRAIN HANDLING & STORAGE CENTER

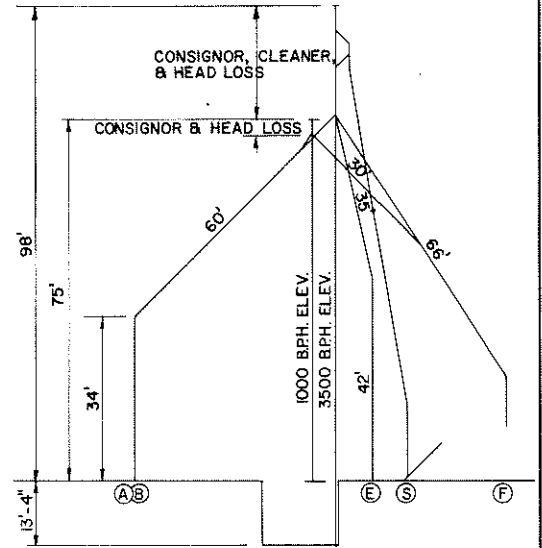
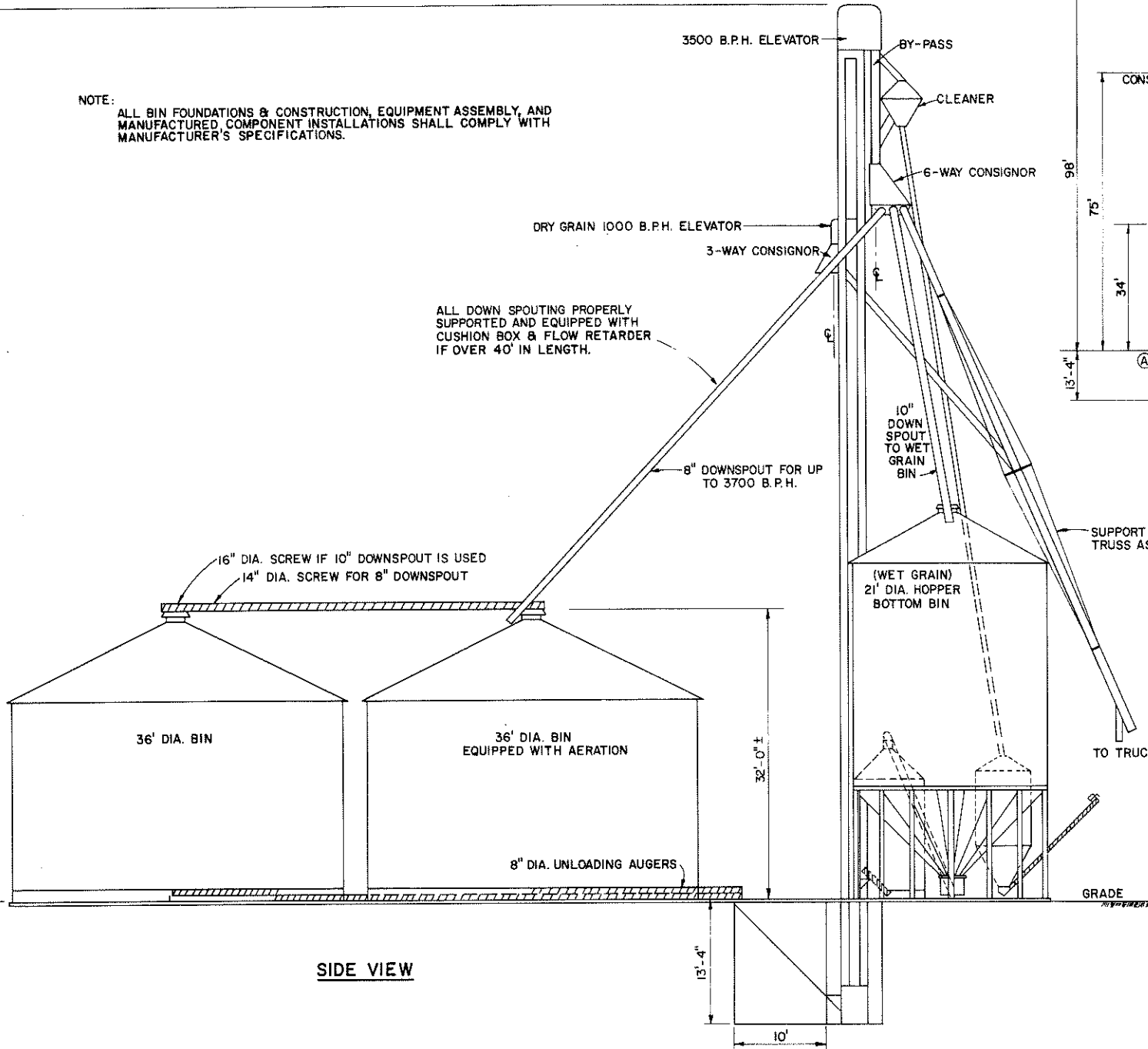
VA.	'78	6294	SHEET 1 OF 2
-----	-----	-------------	--------------

BASED ON V.P.I. PLAN NO. J-1.41

NOTE:
ALL BIN FOUNDATIONS & CONSTRUCTION, EQUIPMENT ASSEMBLY, AND
MANUFACTURED COMPONENT INSTALLATIONS SHALL COMPLY WITH
MANUFACTURER'S SPECIFICATIONS.

APPROX. 98'

ALL DOWN SPOUTING PROPERLY
SUPPORTED AND EQUIPPED WITH
CUSHION BOX & FLOW RETARDER
IF OVER 40' IN LENGTH.



SUPPORT DOWN SPOUTS WITH
TRUSS ASSEMBLY AS REQUIRED

TO TRUCK

GRADE



SCALE: UNLESS OTHERWISE NOTED

SIDE VIEW

COOPERATIVE EXTENSION WORK IN
AGRICULTURE AND HOME ECONOMICS

AND
UNITED STATES DEPARTMENT OF AGRICULTURE COOPERATING

GRAIN HANDLING & STORAGE CENTER

VA.	'78	6294	SHEET 2 OF 2
-----	-----	-------------	--------------