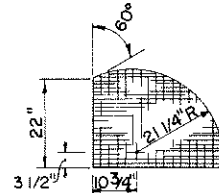
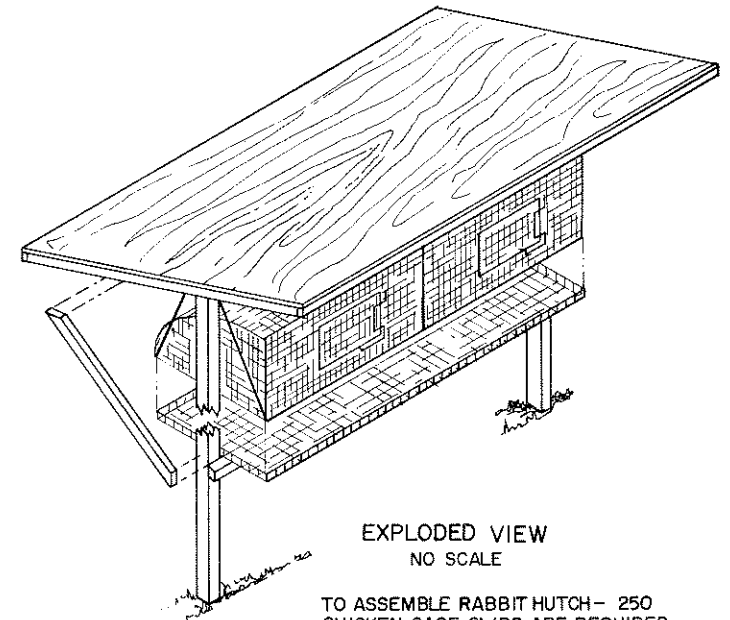


**WIRE MESH CUTTING DIAGRAM**  
 1-PIECE OF WELDED, 14 GAUGE GALVANIZED  
 WIRE, 1" x 2" MESH, 6' WIDE AND 11'-4" LONG.

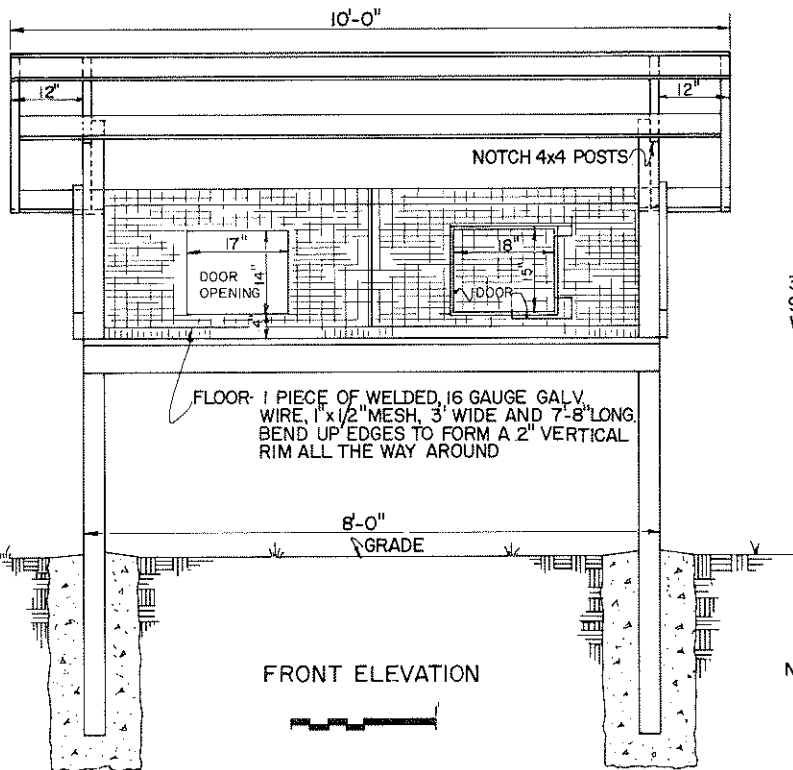


**PATTERN FOR SIDE  
 OF CAGE AND CENTER  
 PARTITION**



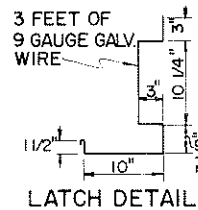
**EXPLODED VIEW  
 NO SCALE**

TO ASSEMBLE RABBIT HUTCH - 250  
 CHICKEN CAGE CLIPS ARE REQUIRED.  
 (SPECIAL PLIERS ARE NEEDED TO APPLY THEM)



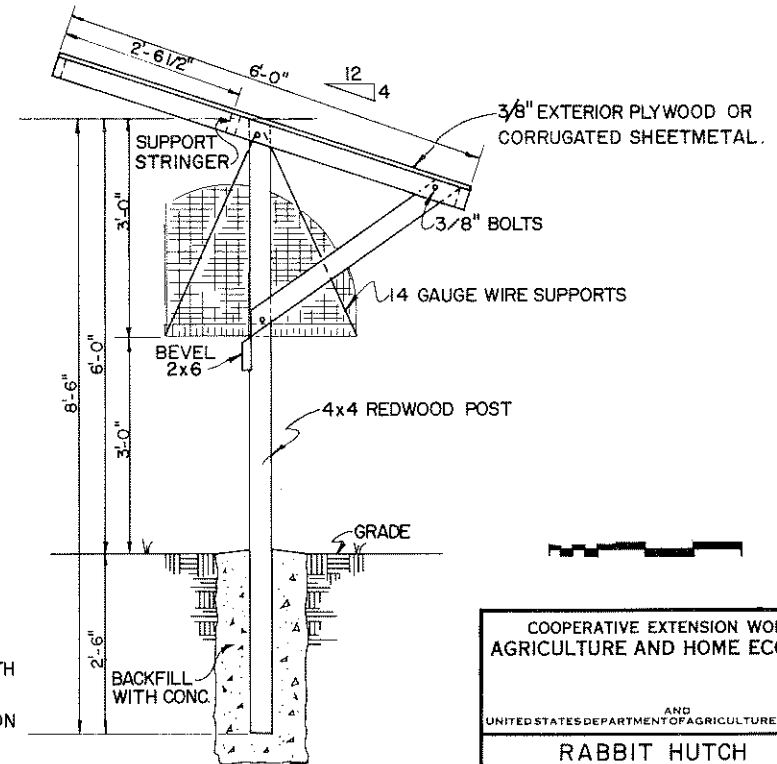
**FRONT ELEVATION**

FLOOR: 1 PIECE OF WELDED, 16 GAUGE GALV.  
 WIRE, 1" x 1/2" MESH, 3' WIDE AND 7'-8" LONG.  
 BEND UP EDGES TO FORM A 2" VERTICAL  
 RIM ALL THE WAY AROUND



**LATCH DETAIL**

NOTE: CONSULT LOCAL HEALTH  
 AND BUILDING CODE  
 AUTHORITIES BEFORE  
 STARTING CONSTRUCTION



**SIDE ELEVATION**

COOPERATIVE EXTENSION WORK IN AGRICULTURE AND HOME ECONOMICS			
AND UNITED STATES DEPARTMENT OF AGRICULTURE COOPERATING			
<b>RABBIT HUTCH</b>			
CALIF.	'77	6277	SHEET 1 OF 1