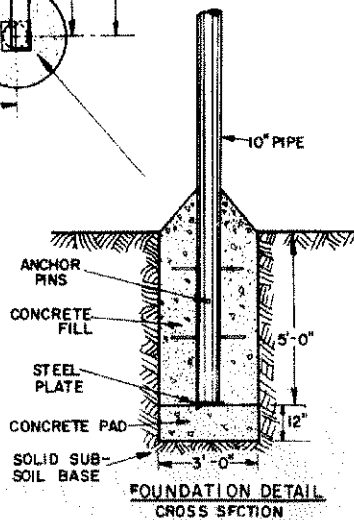


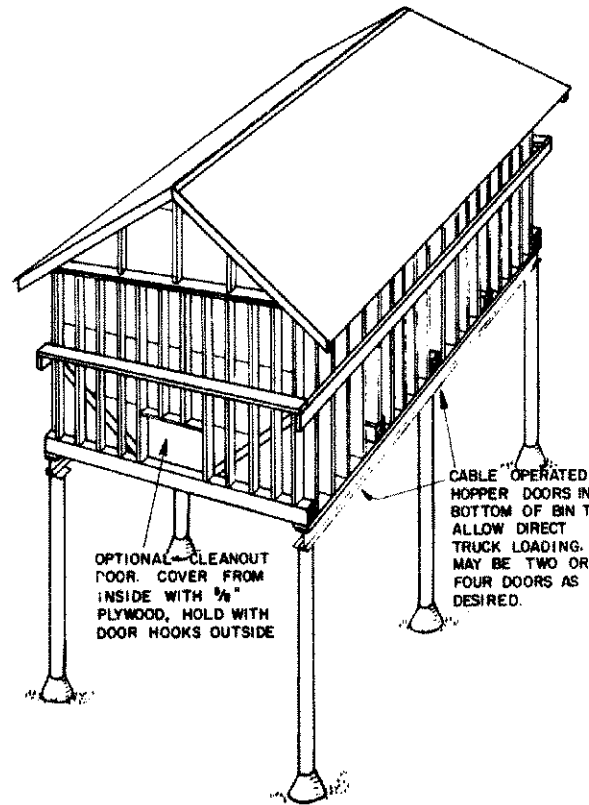
FOUNDATION PLAN

NOTE:
 CONSULT LOCAL HEALTH AND BUILDING
 CODE AUTHORITIES BEFORE STARTING
 CONSTRUCTION.

EXTEND FOOTINGS TO FIRM BASE
 BELOW FROST LINE



**FOUNDATION DETAIL
 CROSS SECTION**



PERSPECTIVE

STORAGE BIN FOR SAWDUST FROM SAWMILL
 DIRECT LOADING INTO LARGE DUMP TRUCKS
 CLEARANCE 14', EXCEPT FOR HIGH CUBE
 TRAILERS (13'-6" HIGH)—PROVIDE 16' CLEARANCE

FINISH

BIN CAN BE PAINTED, BUT IS BEST
 LEFT UNFINISHED. PRESERVE WOOD BY
 APPLICATIONS OF PENTACHLOROPHENOL (PENTA),
 ESPECIALLY TO PROTECT END GRAIN OF
 EXPOSED WOODEN PIECES.

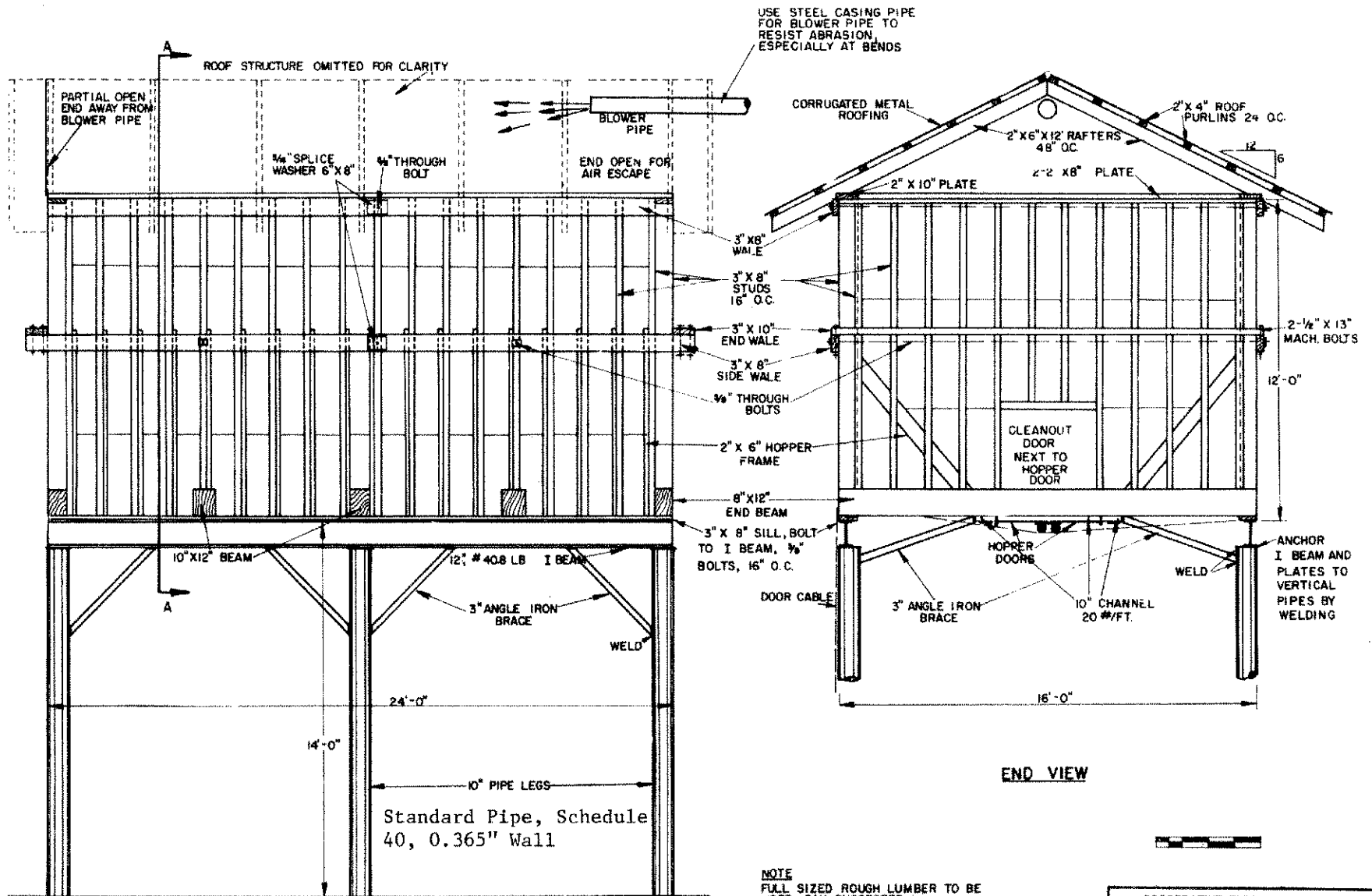
3500 CU. FT



DESIGN FROM BIN BUILT
 BY WADE COCHRAN,
 McKEAN COUNTY

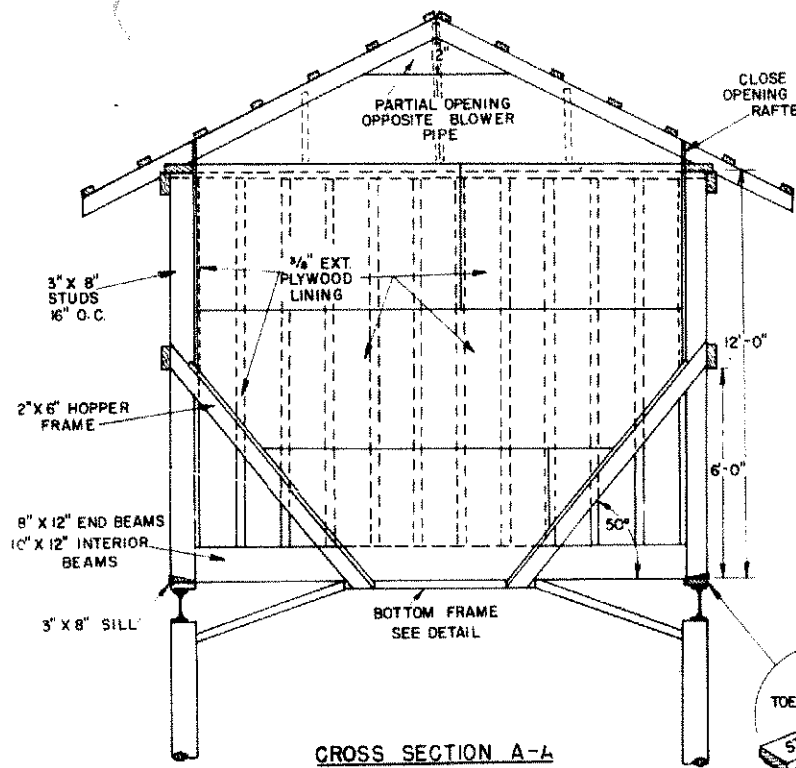
PLAN LAYOUT IN
 CONSULTATION WITH
 ROE S. COCHRAN

COOPERATIVE EXTENSION WORK IN AGRICULTURE AND HOME ECONOMICS		
AND UNITED STATES DEPARTMENT OF AGRICULTURE COOPERATING		
ELEVATED SAWDUST BIN		
PA '77	6276	SHEET 1 OF 3

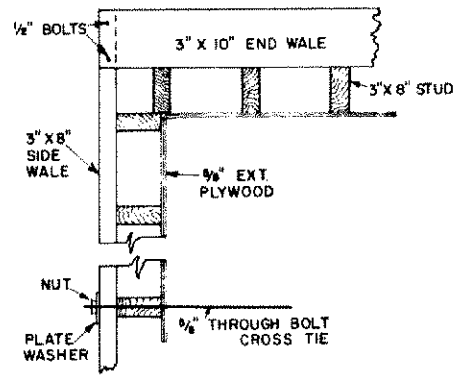


NOTE
 FULL SIZED ROUGH LUMBER TO BE USED, OAK SUGGESTED.
 BIN LINER - 1/2" EXT PLYWOOD OR 1" LUMBER LINED WITH 28 GAUGE GALVANIZED STEEL.

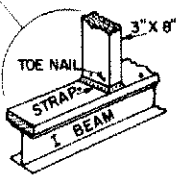
COOPERATIVE EXTENSION WORK IN AGRICULTURE AND HOME ECONOMICS		
AND UNITED STATES DEPARTMENT OF AGRICULTURE COOPERATING		
ELEVATED SAWDUST BIN		
PA	'77	6 276 SHEET 2 OF 3



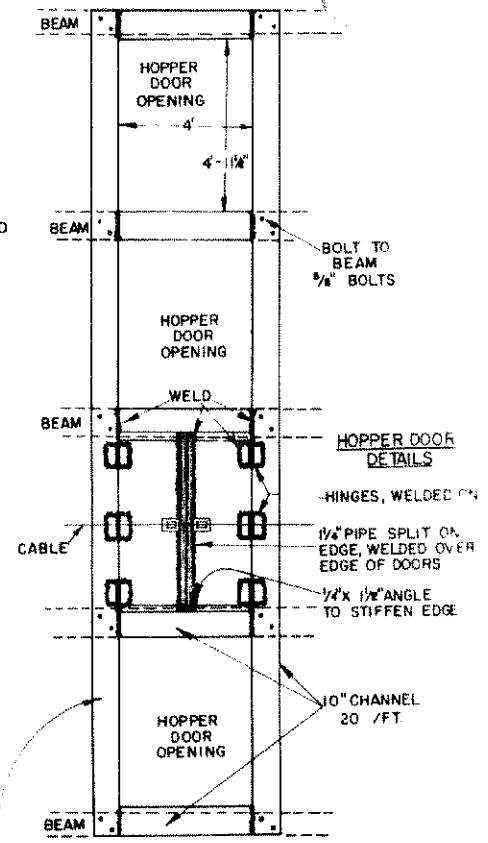
CROSS SECTION A-A



WALL & CORNER DETAIL

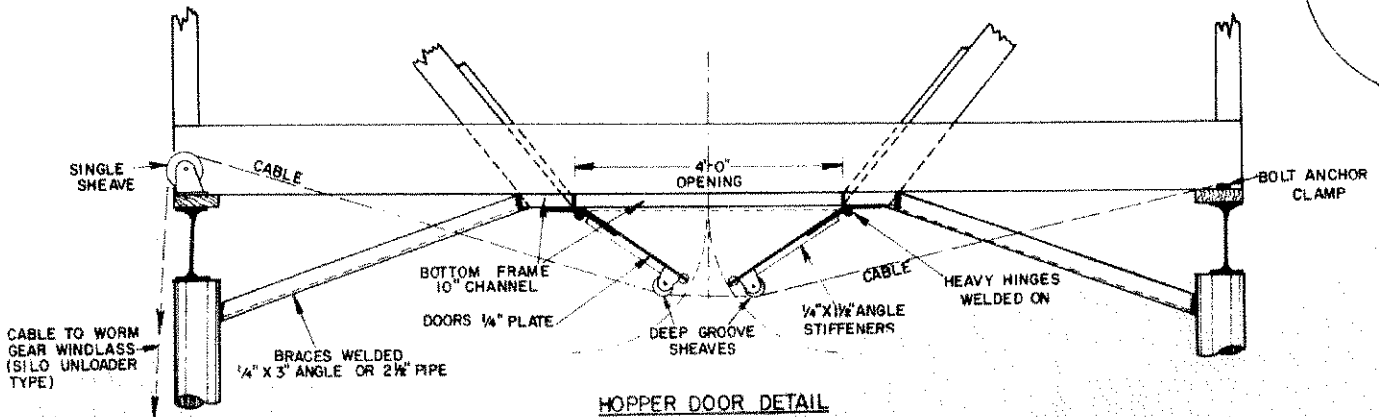


STUD DETAIL
TOENAIL TO SILL,
USE 24\"/>



BOTTOM FRAME DETAIL
VIEW FROM BELOW

NOTE: FOUR HOPPER DOORS WORK BEST, BUT TWO CAN BE USED IN HOPPER OPENINGS WITHOUT DOORS, USE A FLOOR OF 2\"/>



HOPPER DOOR DETAIL

COOPERATIVE EXTENSION WORK IN
AGRICULTURE AND HOME ECONOMICS

AND
UNITED STATES DEPARTMENT OF AGRICULTURE COOPERATING

ELEVATED SAWDUST BIN

PA. '77 6276 SHEET 3 OF 3