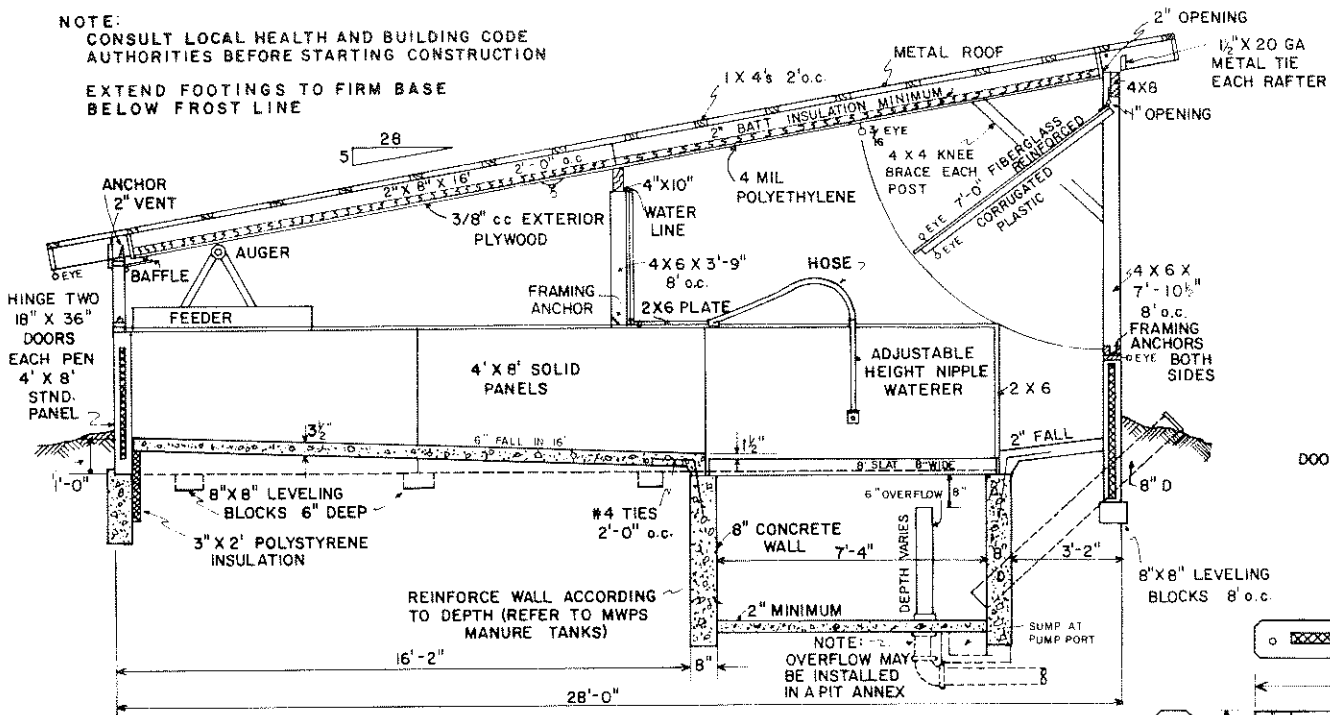


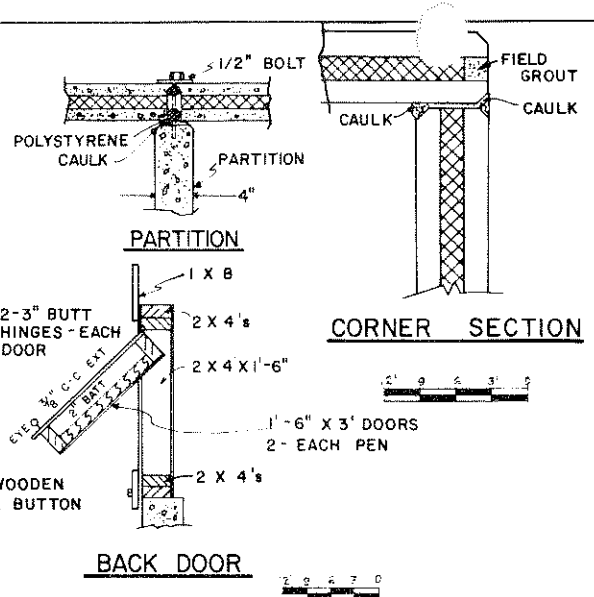
NOTE:
CONSULT LOCAL HEALTH AND BUILDING CODE
AUTHORITIES BEFORE STARTING CONSTRUCTION

EXTEND FOOTINGS TO FIRM BASE
BELOW FROST LINE



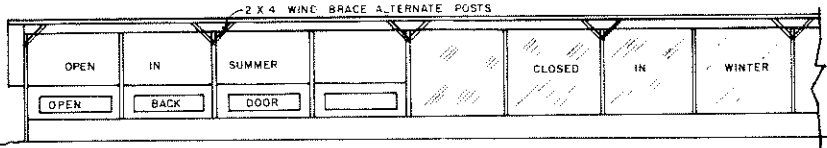
FOGGERS MAY BE INSTALLED OVER SLATS
1-1/2 GPH 90° NOZZLE PER PEN

SECTION AA'

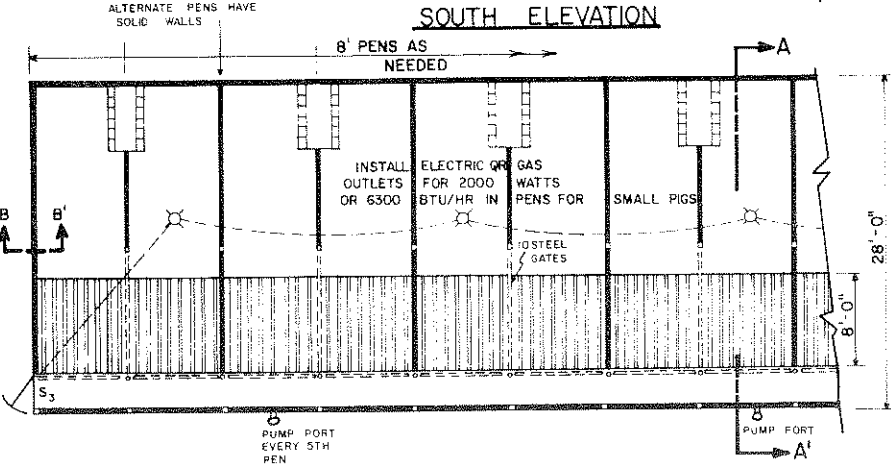


CORNER SECTION

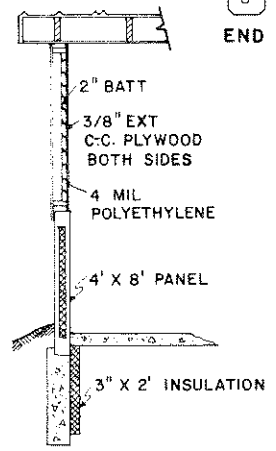
BACK DOOR



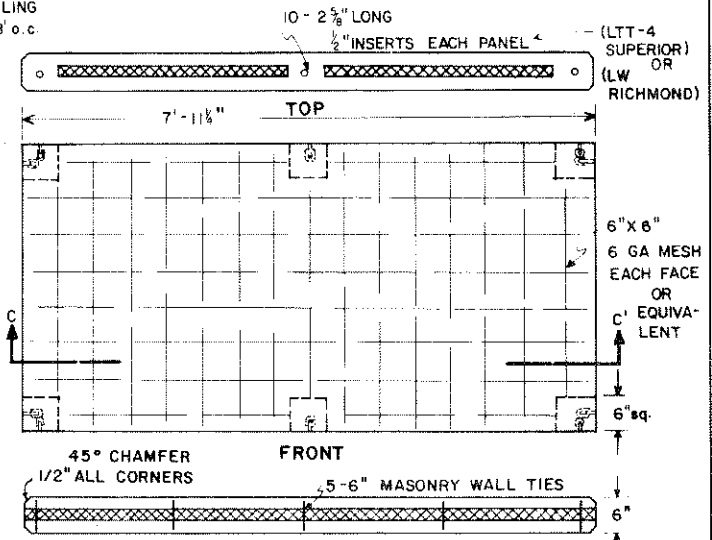
SOUTH ELEVATION



PLAN



SECTION BB'



STANDARD PANEL SECTION CC'

PARTITION PANELS REINFORCED LIKE STANDARD
BUT CONTAIN NO INSULATION
SOLID PARTITION PANELS 4" THICK

COOPERATIVE EXTENSION WORK IN
AGRICULTURE AND HOME ECONOMICS

AND
UNITED STATES DEPARTMENT OF AGRICULTURE COOPERATING

SWINE FINISHING BUILDING

NEBR. '77 6274 SHEET 1 OF 1

BASED ON: UNIV. OF NEBR.
PLAN NO. 7046