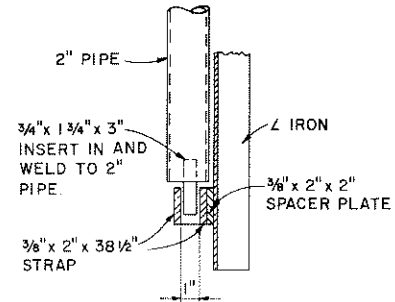
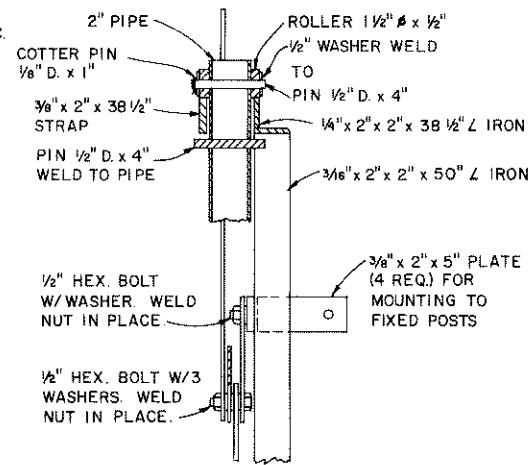


- NOTES:**
1. ALL SCISSOR ACTION JOINTS TO BE ASSEMBLED AS SHOWN IN SECTION C-C.
 2. 17/32" DRILL - ALL HOLES UNLESS OTHERWISE NOTED.
 3. FASTEN MOVABLE PARTS WITH 1/2" D. PINS OR 1/2" BOLTS AND NUTS WHERE INDICATED. FIX FASTENERS IN PLACE BY WELDING.
 4. ATTACH HEADGATE AT 4 PLACES TO FIXED POSTS. MOUNTING PLATES ON HEADGATE ARE SPACED 35 1/8" C. TO C.



COOPERATIVE EXTENSION WORK IN AGRICULTURE AND HOME ECONOMICS		
AND UNITED STATES DEPARTMENT OF AGRICULTURE COOPERATING		
MOVABLE HEADGATE		
W. VA. '77	6272	SHEET 1 OF 1